

CHD SERIES



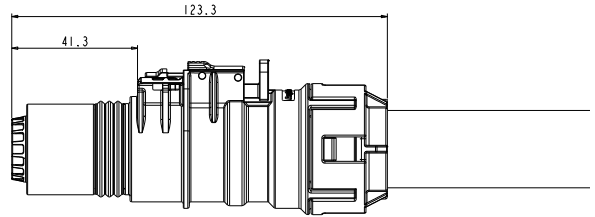
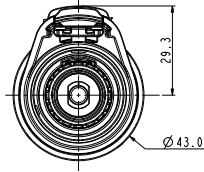
KEY FEATURES

- Unmated socket: IP67
- Salt Spray over 500H
- Rated current up to 500A
- Rated voltage up to 1500V

APPLICATIONS	
CHD has been designed for high-power charging in harsh environments.	
MECHANICAL	
Durability	> 50 mating cycles
ELECTRICAL	
Rated voltage	1500V Max. (DC)
<u>Rated current:</u>	
70mm ² shield cable.....	250A@ Ambient temp. 70°C
95mm ² shield cable.....	350A@ Ambient temp. 70°C
120mm ² shield cable.....	430A@ Ambient temp. 70°C
150mm ² shield cable.....	500A@ Ambient temp. 70°C
Shielding	Yes
ENVIRONMENTAL	
Sealing	IP67, IP6K9K (mated)
Temperature range	-40°C to 125°C
Salt spray	500h Min.
MATERIAL	
Housing	Aluminum alloy
Contacts	Copper alloy, silver plating
Insulator	Flame-retardant thermoplastic composition
Sealing	Rubber

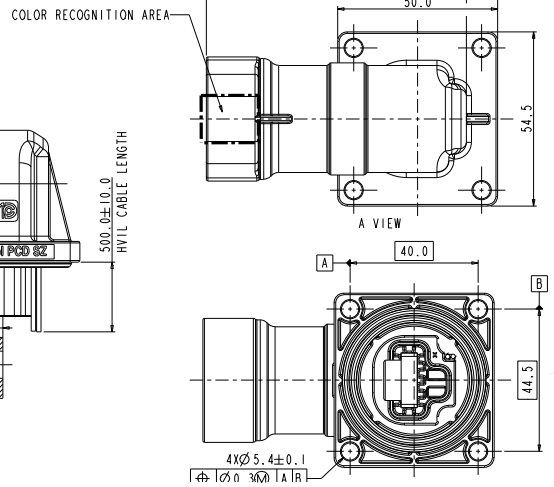
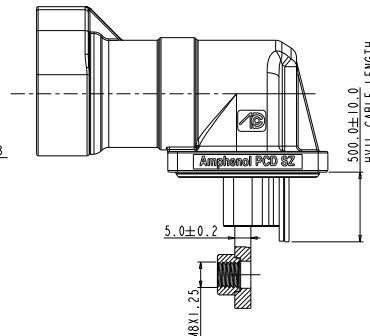
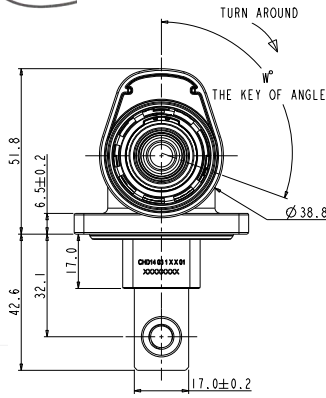
CHD 1-PIN | PLUG

CHD	14	06	1	X	X	XX
				A: coding A B: coding B C: coding C	D: coding D E: coding E	0: without HVIL 1: with HVIL 01: 150mm ² 02: 120mm ² 03: 95mm ² 04: 70mm ²

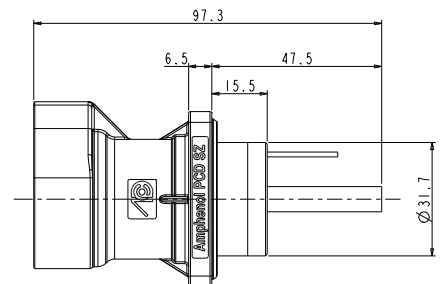
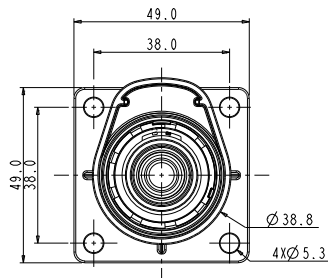


CHD 1-PIN | RECEPTACLES

CHD	14	03	1	X	X	01
				A: coding A B: coding B C: coding C	D: coding D E: coding E	0: without HVIL 1: with HVIL



CHD	14	02	1	X	X	01
				A: coding A B: coding B C: coding C	D: coding D E: coding E	0: without HVIL 1: with HVIL

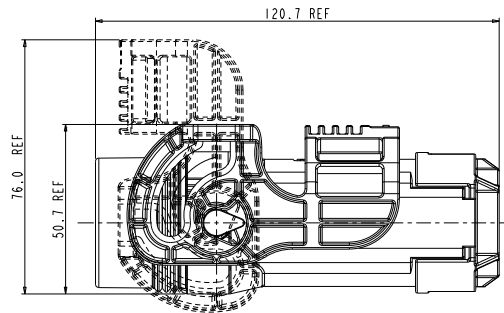
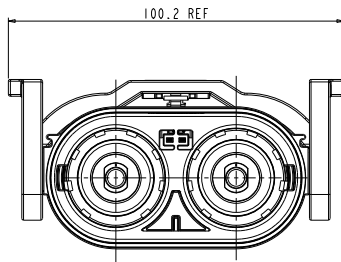


比例 1:1

CHD 2-PIN | PLUG



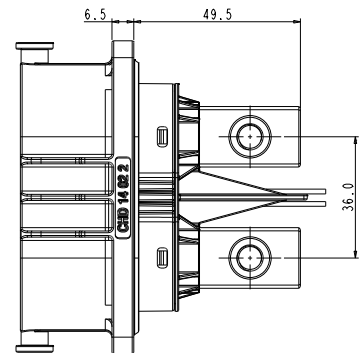
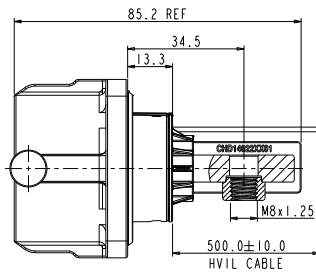
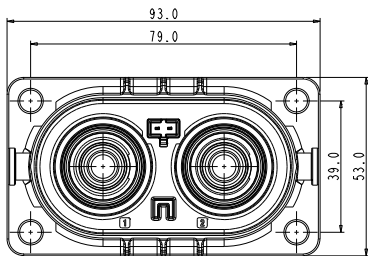
CHD	14	06	2	X	X	XX
				A: coding A	0: without HVIL	01: 150mm ²
				B: coding B	1: with HVIL	02: 120mm ²
				C: coding C		03: 95mm ²
						04: 70mm ²



CHD 2-PIN | RECEPTACLE



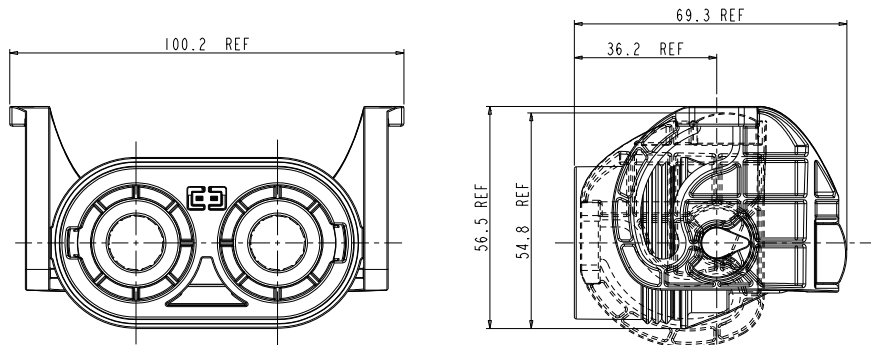
CHD	14	02	2	X	X	01
				A: coding A	0: without HVIL	
				B: coding B	1: with HVIL	
				C: coding C		



CHD 2-PIN SHUNT | PLUG



CHD	14	06	2	N	X	X	SC
					0: without HVIL 1: with HVIL	0: without power terminal 1: with power terminal	SC: Short connection



CHD 2-PIN SHUNT | RECEPTACLE



CHD	14	02	2	X	X	01
				A: coding A B: coding B C: coding C	0: without HVIL 1: with HVIL	

