

## HVS SERIES



### KEY FEATURES

- Easy to install in a limited space
- Push-pull locking system with audible "click"
- EMI shielding
- No tool required for unmating
- Sealing, IP67, IP6K9K (mated)
- Multiple coding positions
- RoHS compliant

### APPLICATIONS

EV air-conditioner

DCDC

PTC

Power distribution boxes

### MECHANICAL

Durability > 200 mating cycles

Connection type Crimping

### ELECTRICAL

Rated voltage 230V AC / 400V DC

Rated current 32A Max @ Ambient temperature 70°C

Insulator resistance > 2000MΩ

Dielectric withstand voltage 2500V AC

Shielding Yes

### ENVIRONMENTAL

Sealing IP67, IP6K9K (mated)

Temperature range -40°C to 125°C, short term to 150°C

Inflammability UL94V0

Salt spray 48h, 96h

### MATERIAL

Shell Aluminum alloy with zinc, nickel plating and anodic oxidation

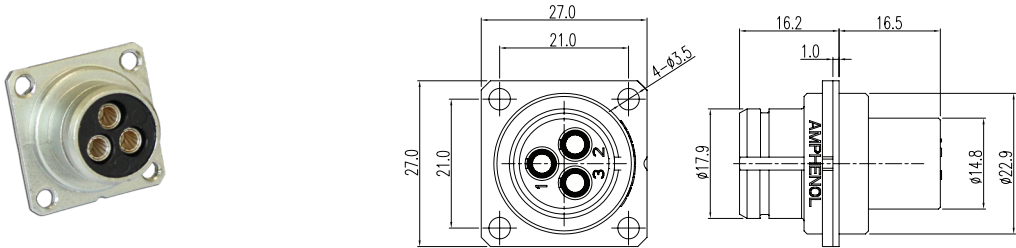
Contacts Copper alloy, silver plating

Insulator Flame-retardant thermoplastic composition

Sealing Rubber

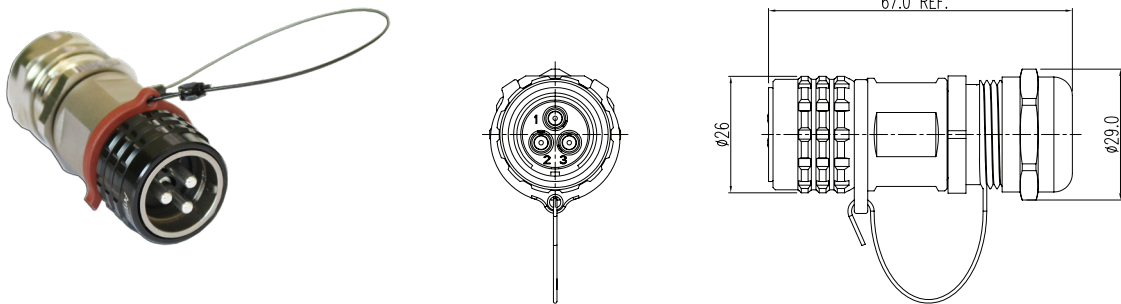
RECEPTACLE

P/N: HVS1S-203FC (socket) / HVS1S-203MC (pin)



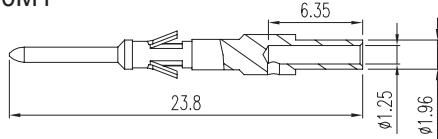
PLUG

P/N: HVS1P-203MC (pin) / HVS1P-203FC (socket)

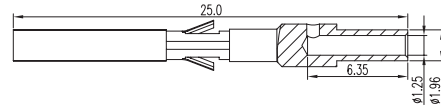


**CONTACTS** Notice: HVG series connectors are not include contact, please order separately.

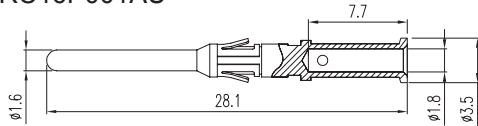
HVG20M1



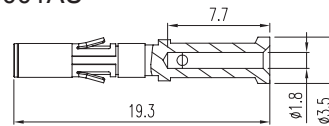
HVG20F1



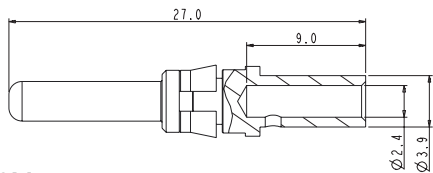
ASRC16P001AU



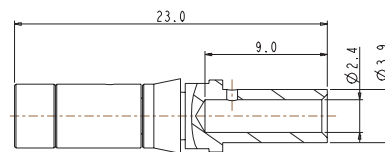
ASRC16SC001AU



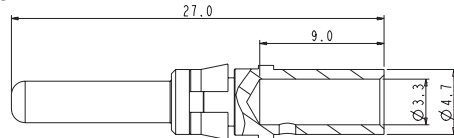
HVG30M2



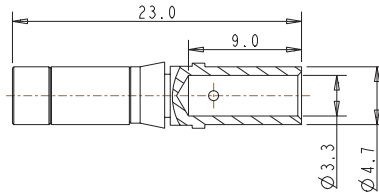
HVG30F2



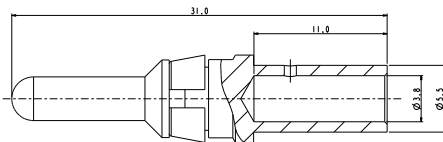
HVG30M4



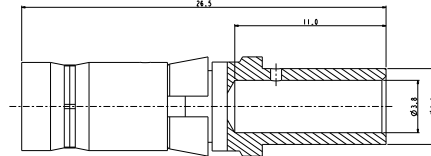
HVG30F4



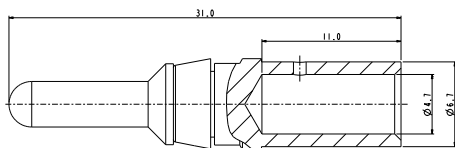
HVG30M6



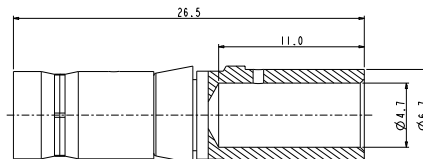
HVG30F6



HVG30M10



HVG30F10

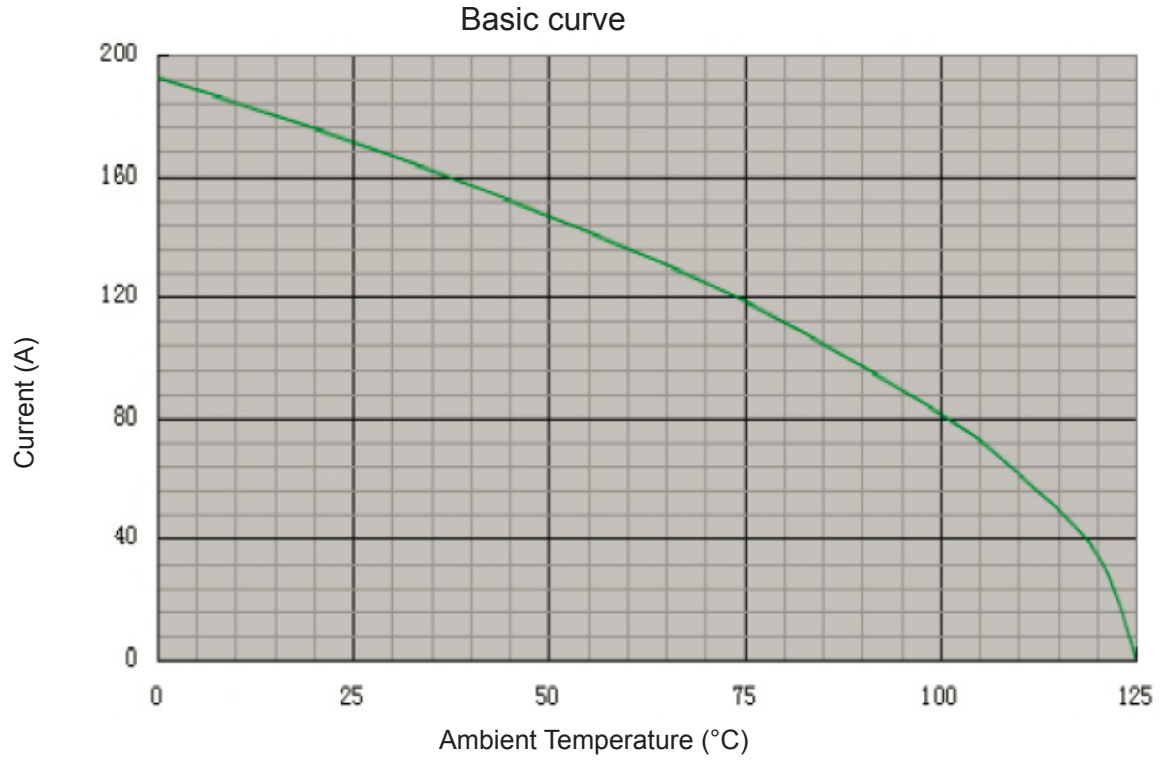


**PART NUMBER**

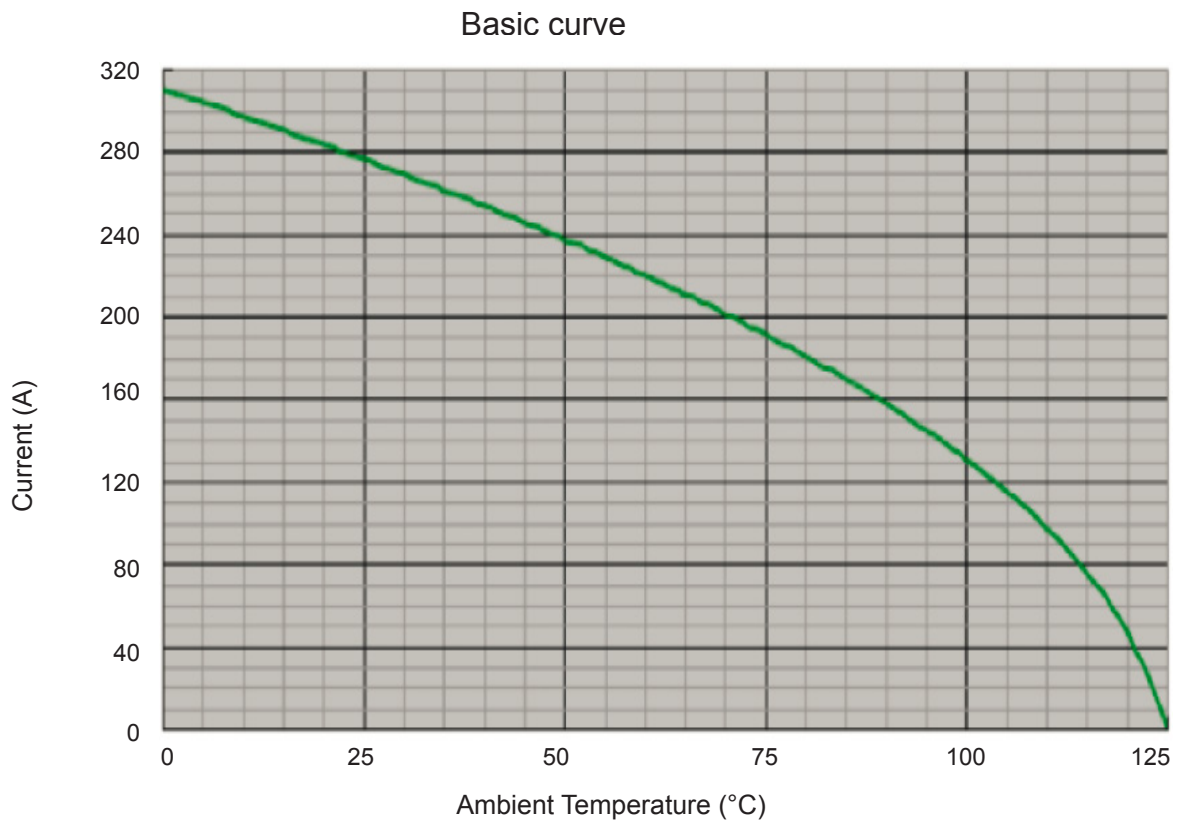
Contact type for connector	Contact size	Part number		Rated Current	For cable section	Extraction tool
		Pin	Socket			
Signal: HVG402/403/492	1.0mm	HVG20M1	HVG20F1	7.5A max	0.5 to 1.0 mm <sup>2</sup>	HV-TOOL-10R
Signal: HVG404/406	1.6mm	ASRC16PC001AU	ASRC16SC001AU	13A max	0.75 to 1.5 mm <sup>2</sup>	ASGTC-R-16S
Power: HVS, HVG402/403/404/406	3.0mm	HVG30M2	HVG30F2 / HVG30FS2	23A max	2.5 mm <sup>2</sup>	HV-TOOL-30R
Power: HVS HVG402/403/404/406	3.0mm	HVG30M4	HVG30F4 / HVG30FS4	40A max	4.0 mm <sup>2</sup>	HV-TOOL-30R
Power: HVG492	3.6mm	HVG30M6	HVG30F6	50A max	6.0 mm <sup>2</sup>	HV-TOOL-36R
		HVG30M10	HVG30F10		10.0 mm <sup>2</sup>	
Signal: EX SERIES	1.6mm	EX16M1	EX16F1	7.5A max	0.75 to 1.5 mm <sup>2</sup>	ASGTC-R-16S
	3.0mm	EX30M4	-	32A max	2.5 to 4.0 mm <sup>2</sup>	HV-TOOL-30R
	3.0mm	EX30M6	-	40A max	6.0 mm <sup>2</sup>	HV-TOOL-30R
Power: EX SERIES	3.0mm	-	EX30F4	32A max	2.5 to 4.0 mm <sup>2</sup>	EX-TOOL-30R
	3.0mm	-	EX30F6	40A max	6.0 mm <sup>2</sup>	EX-TOOL-30R

## TEMPERATURE RISE CURVE

### HVBI R6



### HVBI R8



## TEMPERATURE RISE CURVE

HVBI R10

