

## EXCEL|MATE MSD XL - TECHNICAL CHARACTERISTICS



### KEY FEATURES

- 1 x integrated internal HVIL
- Unique cooling structure
- High current contacts with Amphenol Radsok technology
- No tools required to unmate
- Various fuse ratings
- Receptacle can be front or rear mounted

### APPLICATION

It is a tool-free solution for disconnecting the internal high voltage battery pack and protecting it from short circuit.

### MECHANICAL

Mating cycles	≥ 500 cycles
---------------	--------------

### ELECTRICAL

Fuse specification	up to 630A
--------------------	------------

With fuse:

Rated current	300A
---------------	------

Rated voltage	1000V DC
---------------	----------

With shunt:

Rated current	350A
---------------	------

Rated voltage	1500V DC Max
---------------	--------------

### ENVIRONMENTAL

Protection degree	IP67, IP6K9K (mated)
-------------------	----------------------

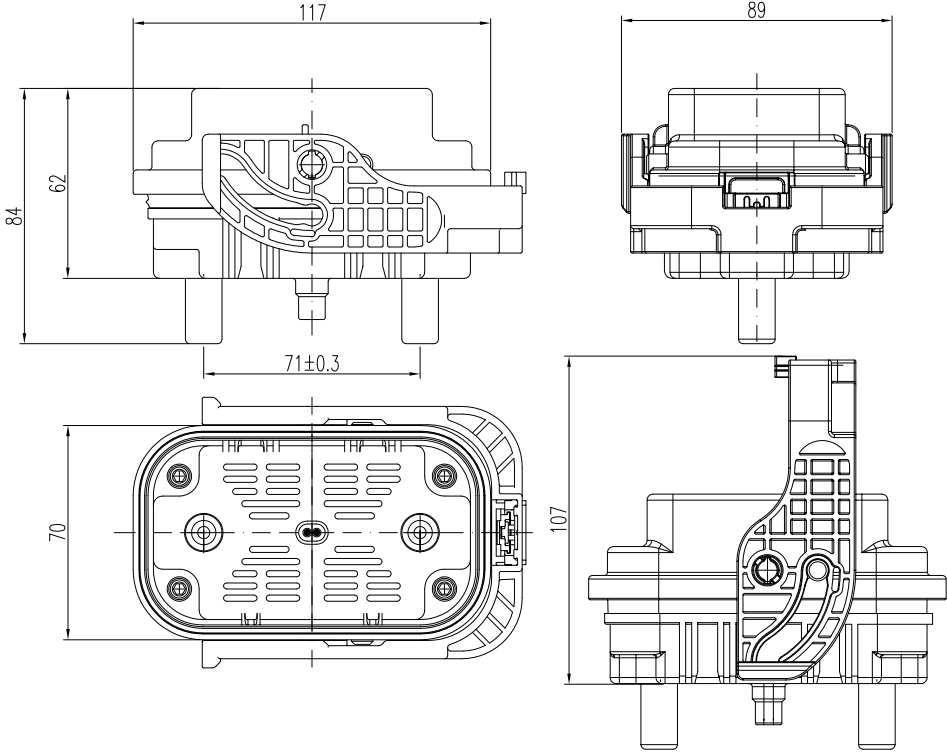
Ambient temperature	-40°C to 70°C
---------------------	---------------

Storage temperature	-40°C to 85°C
---------------------	---------------

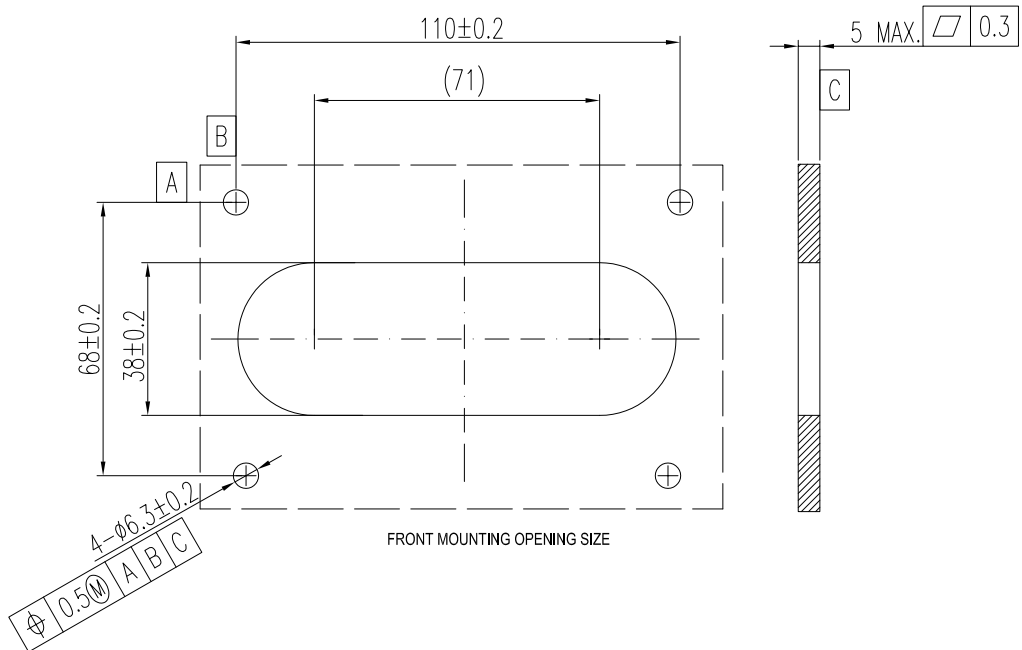
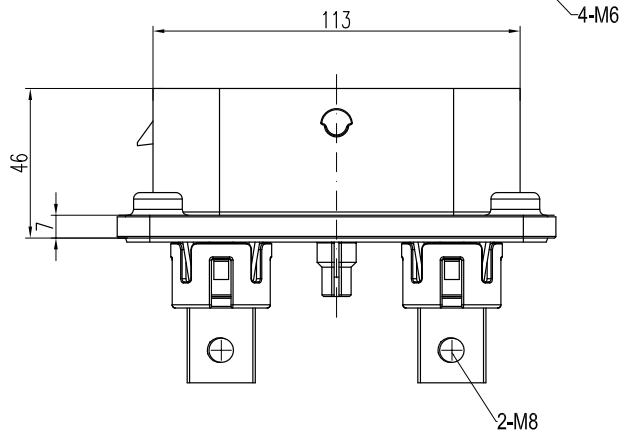
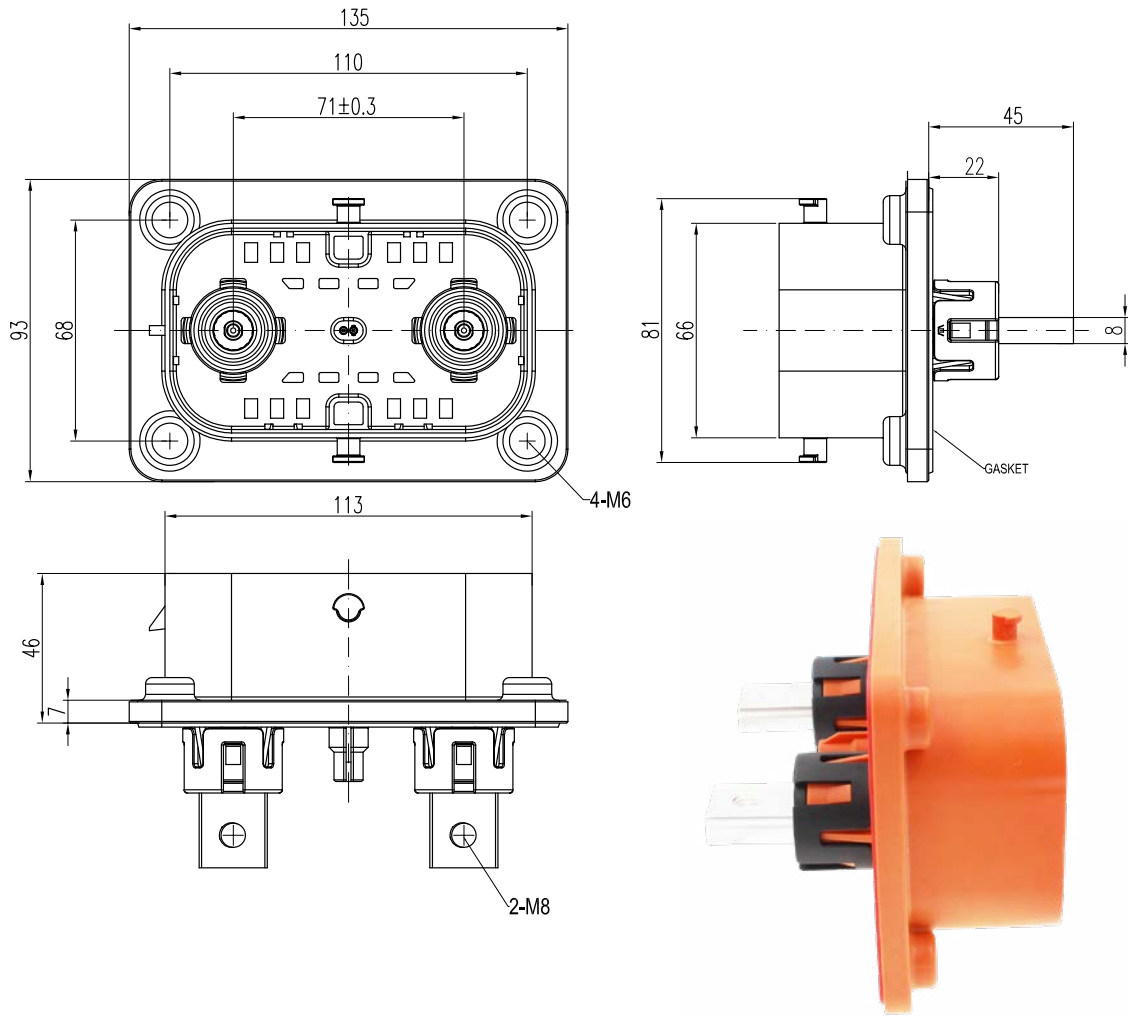
Operating temperature	-40°C to 125°C
-----------------------	----------------

Flammability	UL94V0
--------------	--------

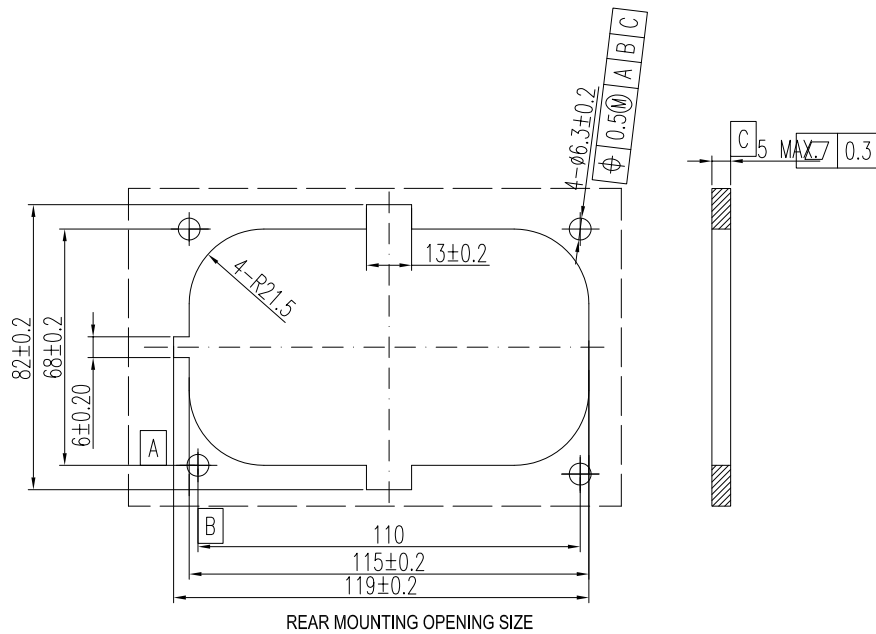
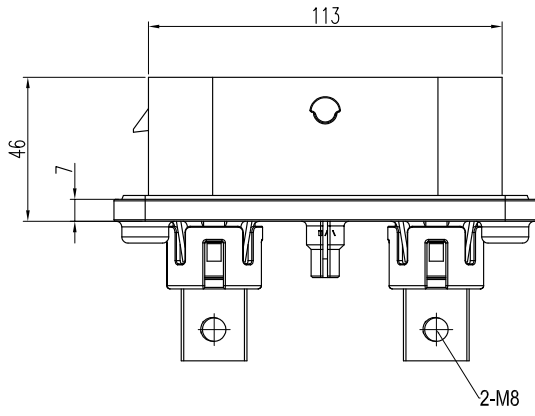
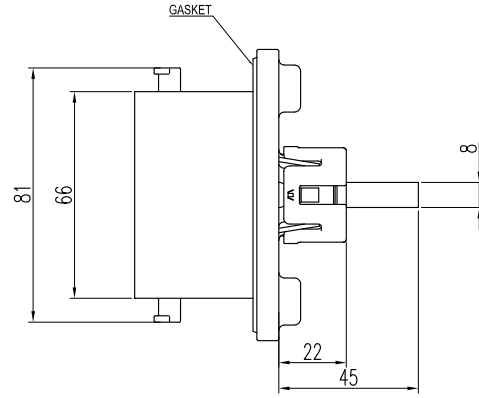
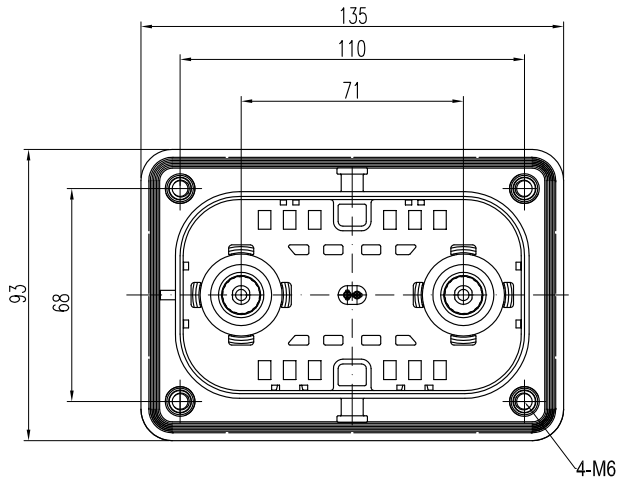
PRODUCT DIMENSIONS



FRONT MOUNTED



REAR MOUNTED



Plug

	<b>MSD XL</b>	<b>M</b>	<b>200</b>
Shell type:			
<b>M:</b> Plug			
<b>Fuse rating current:</b>			
<b>160:</b> 160A			
<b>200:</b> 200A			
<b>250:</b> 250A			
<b>315:</b> 315A			
<b>350:</b> 350A			
<b>400:</b> 400A			
<b>450:</b> 450A			
<b>500:</b> 500A			
<b>550:</b> 550A			
<b>630:</b> 630A			
<b>000:</b> No fuse needed, can directly use the terminal			
Fuse brand :			
<b>Bussmann</b> (by default), other brands, please contact us.			

Receptacle

	<b>MSD XL</b>	<b>F</b>	<b>000</b>	<b>F</b>
Shell type:				
<b>F:</b> Receptacle				
Fuse rating current:				
<b>000:</b> No fuse needed, can directly use the terminal				
Flange mounted type:				
<b>F:</b> Front mounted				
<b>R:</b> Rear mounted				