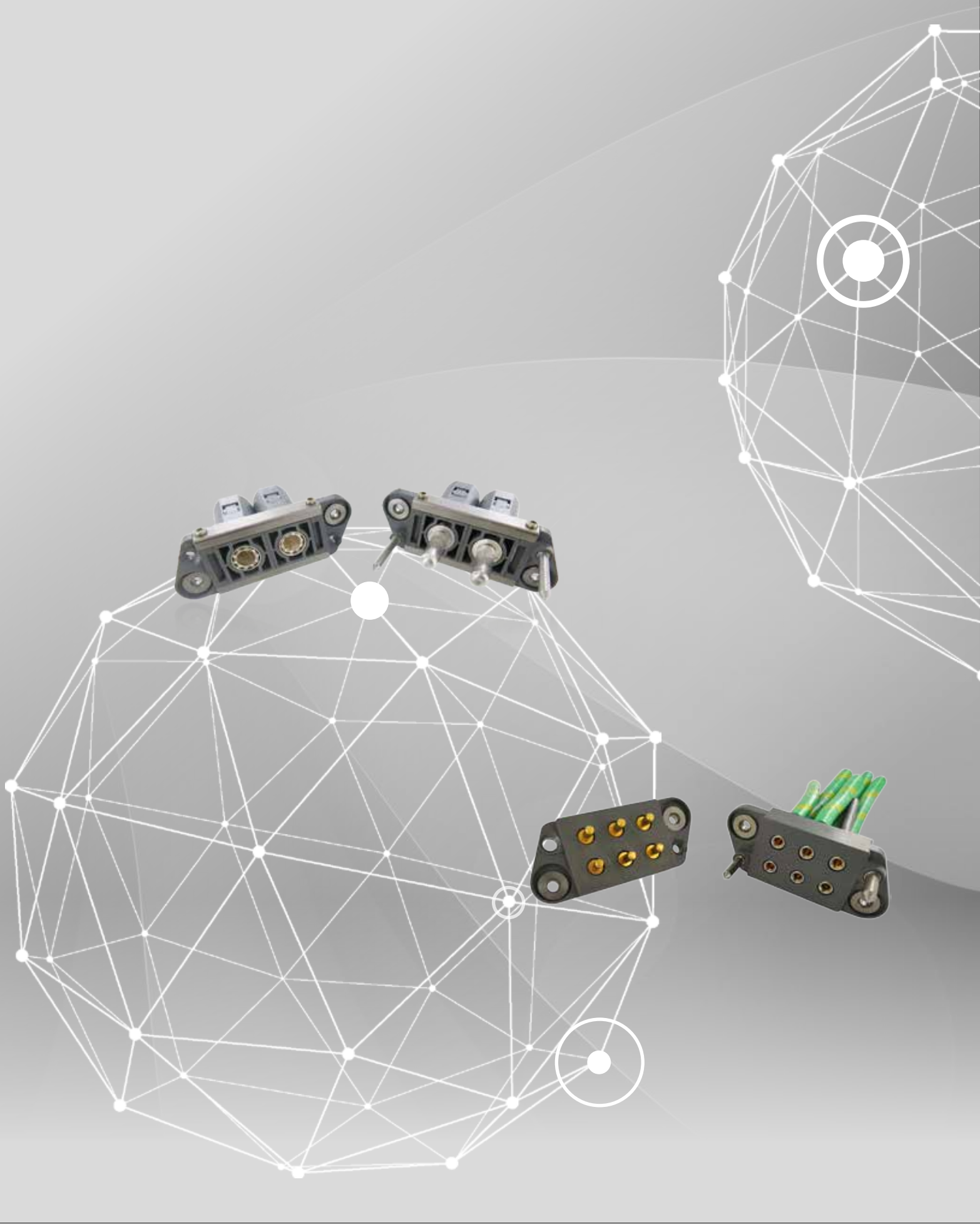


# RFM Series

Rack and Panel Blind Mating Modular Connector  
EN45545-2 & NF F 61-032 Qualified





# RFM POWER



## Table of contents

<b>RFM Power</b>	<b>25</b>
General characteristics	26
Monolithic 6 x 60 A	27
200 A Module	29
200 A Module Contacts	30

### THE RFM SERIES SERVES VARIOUS MARKETS, INCLUDING:



#### Industrial

Railway Racks (cars batteries)  
Battery Racks  
Base stations

# GENERAL CHARACTERISTICS - RFM

## Blind mate modular floating rack with high voltage contacts



### Benefits

- Blind mate, floating fixing.
- Low insertion forces.
- High mating / unmating cycles.
- Power contacts – Male & Female contacts can be mounted on both sides.
- Socket contacts 200 Amps are equipped with RADSOK® Technology (see features page 30).
- Modular 2 modules of one crimp contact and monolithic 6 cavities for removable crimp contacts .
- Meets NF F61-032 requirements: vibrations, salt spray, temperature.

	6 x 60 A Monolithic	2 x 200 A Module
<b>MAIN ELECTRICAL VALUES</b>		
<b>Current (nom.)</b>	60 A	200 A
<b>Insulation resistance under 500 Vrms</b>	>10 <sup>3</sup> MΩ	
<b>Contact resistance</b>	<2,5 mΩ	<0.5 mΩ
<b>DVV:</b>		
- Between contacts	1500 Vrms	2600 Vrms
- Between contacts & ground	1600 Vrms	2600 Vrms
<b>Insertion forces per contacts</b>	≤6 N	≤32 N
<b>Pin contact diameter</b>	3.5 mm	8 mm
<b>MAIN ENVIRONMENTALS CHARACTERISTICS</b>		
<b>Temperature range</b>	-55°C to +125°C	
<b>Fire behavior</b> (standard version in GREY LEXAN*)	EN 45545-2 HL1(R22) I2-F2 following NF F16-102	
<b>Salt spray</b>	96 hours following NFC 20711	
<b>Chemical behavior</b>	HCl 1N 5min; NaOH 1N 5min	



\* For BLACK LEXAN, please consult us

## MONOLITHIC 6 X 60 A - RFM POWER

**Nota:**

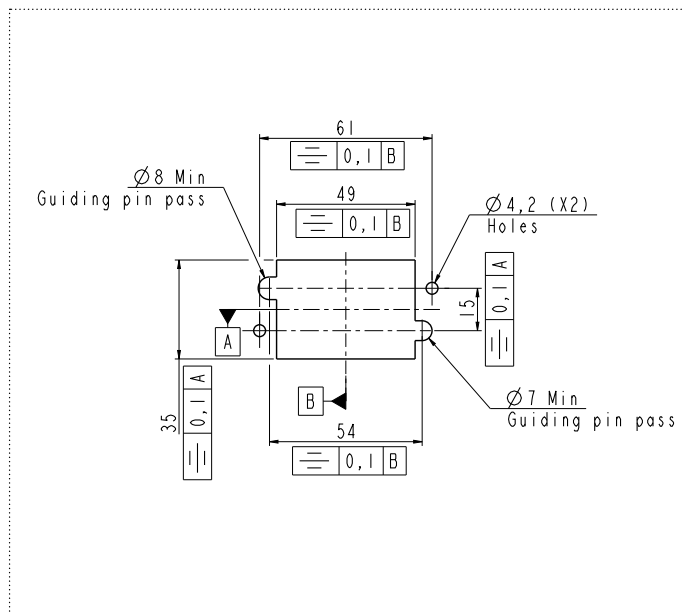
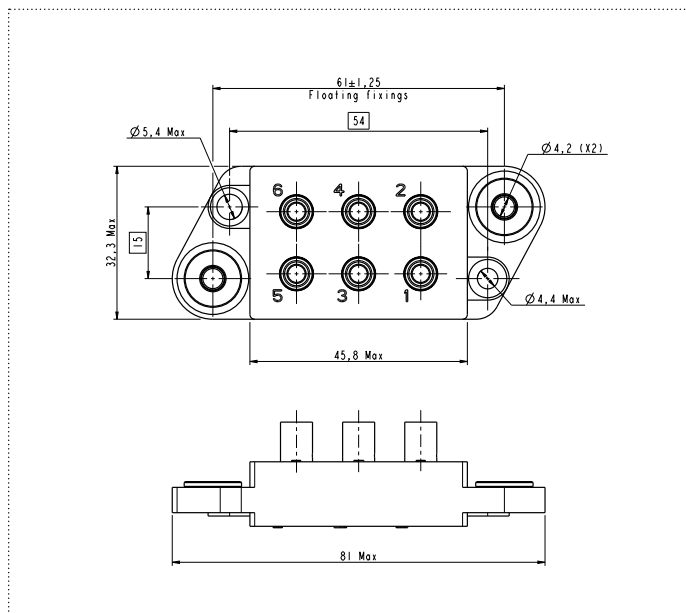
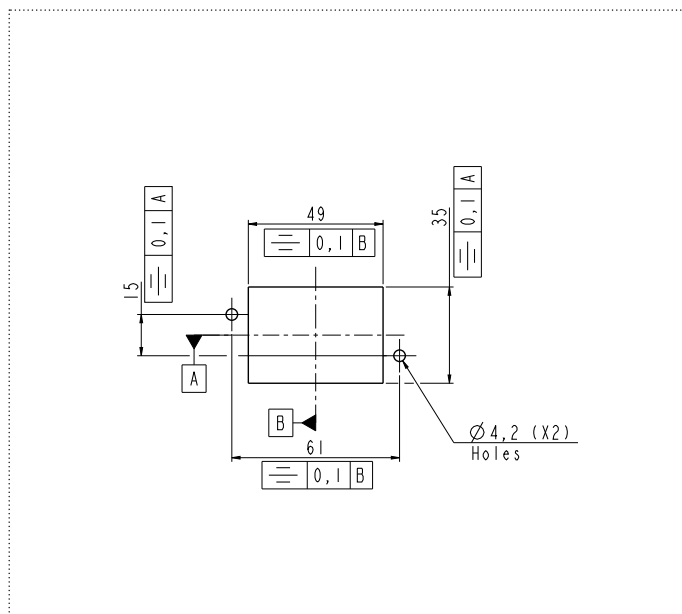
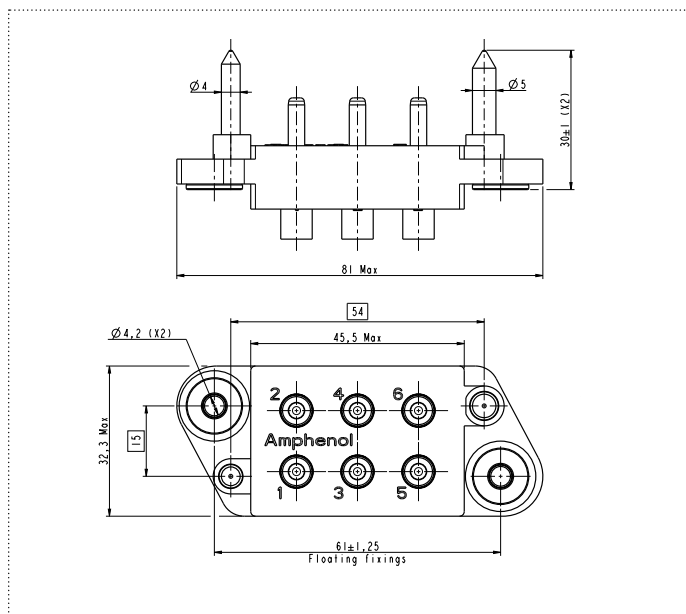
Plug or receptacle can be equipped with pins or sockets, the contacts must be ordered separately.



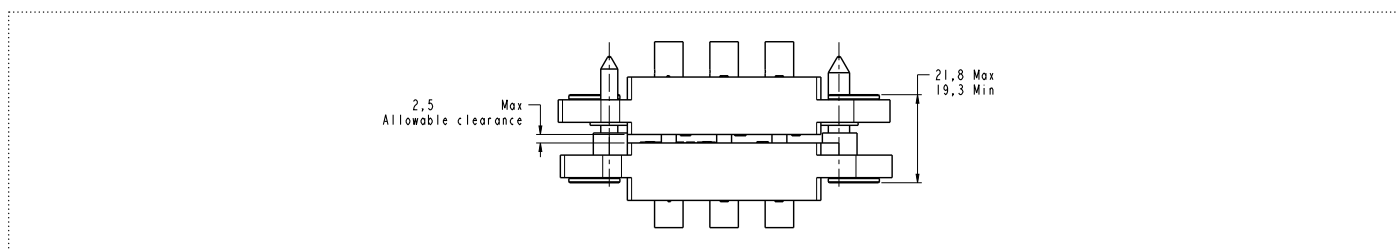
## External dimension

## Panel cutout

RECEPTACLE P/N 507688

**PLUG P/N 507687**

## MATED CONNECTORS





All dimensions are in mm

Due to technical modifications, all information provided is subject to change without prior notice  
Designed by Amphenol Socapex

## Amphenol SOCAPEX

# MONOLITHIC 6 X 60 A - RFM POWER

## Contacts

	Designation	P/N	Current	Admissible Section	Termination
	Pin Contact Ø 3,5 mm	30501	60A	13 mm <sup>2</sup> AWG 6	Crimp
		30533		4 à 10 mm <sup>2</sup> AWG 8-10	
	Designation	P/N	Current	Admissible Section	Termination
	Socket Contact Ø 3,5 mm	30502	60A	13 mm <sup>2</sup> AWG 6	Crimp
		30534		4 à 10 mm <sup>2</sup> AWG 8-10	

## Tooling

- Crimping:

	Plier	Selector position	Gauge awg	Locator
Contacts Ø3,5 mm 30501 30502	OCETA M 317	6	6	OCETA TP 805
	COJACK TGV 515			COJACK TGV 503
Contacts Ø3,5 mm 30533 30534	OCETA M 317	5 to 8	10 to 8	OCETA TP 805
	COJACK TGV 515			COJACK TGV 503

Contact Ø 3.5 mm		
Insertion	Pin & Socket	DAK590*
Extraction	Pin	DAK126-12A*
	Socket	DAK397*

\* DMC tools for sale in distribution



# 200 A MODULE - RFM POWER



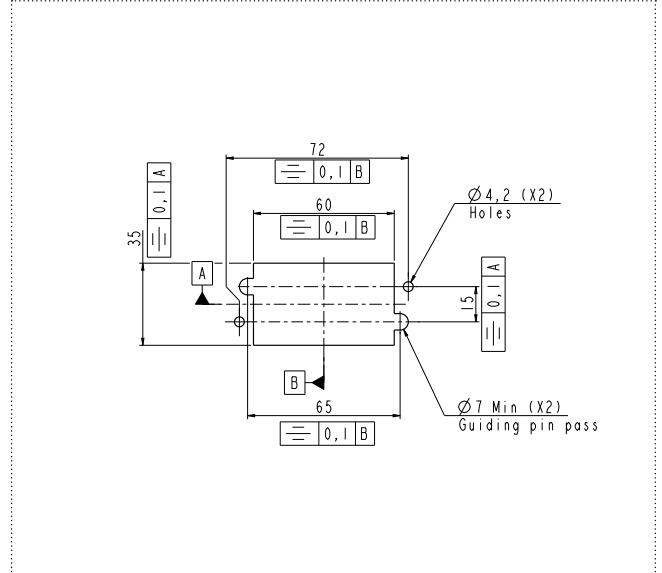
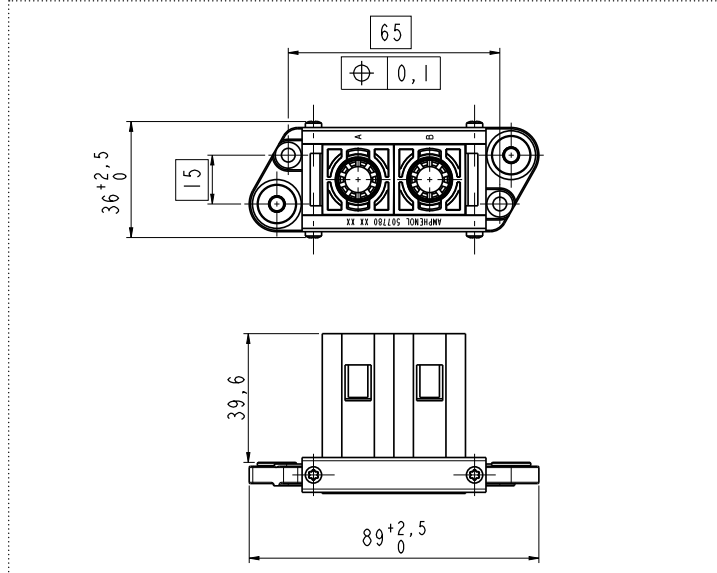
## Nota:

This 200 A module can be used into standard RFM modular connectors.  
Plug to be equipped with pin & receptacle with sockets. Contacts must be ordered separately.

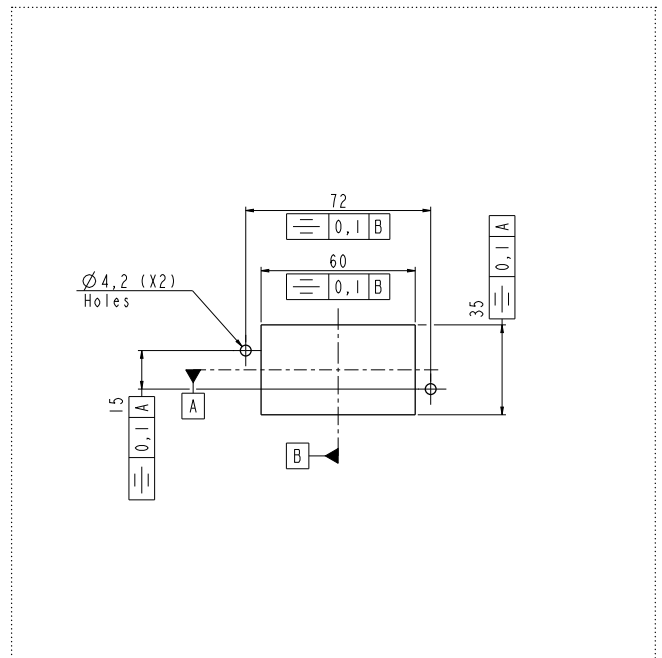
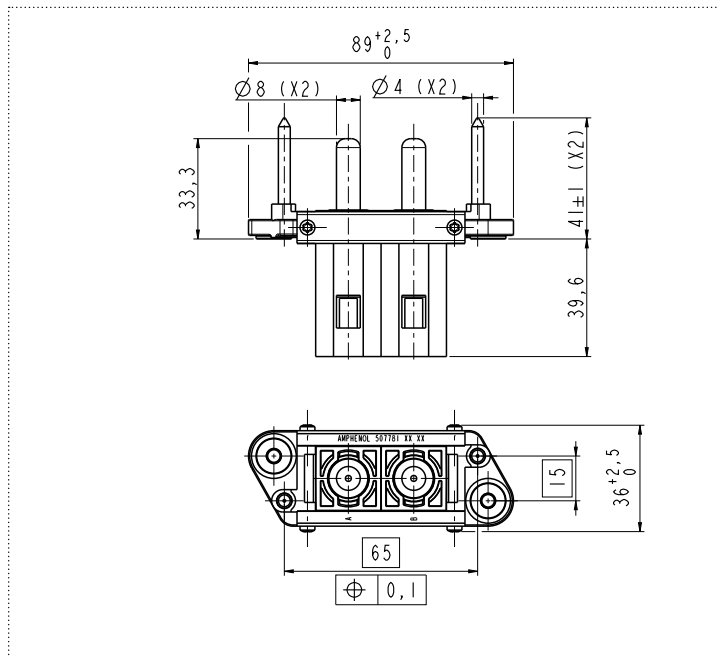
## External dimension

RECEPTACLE P/N 507780

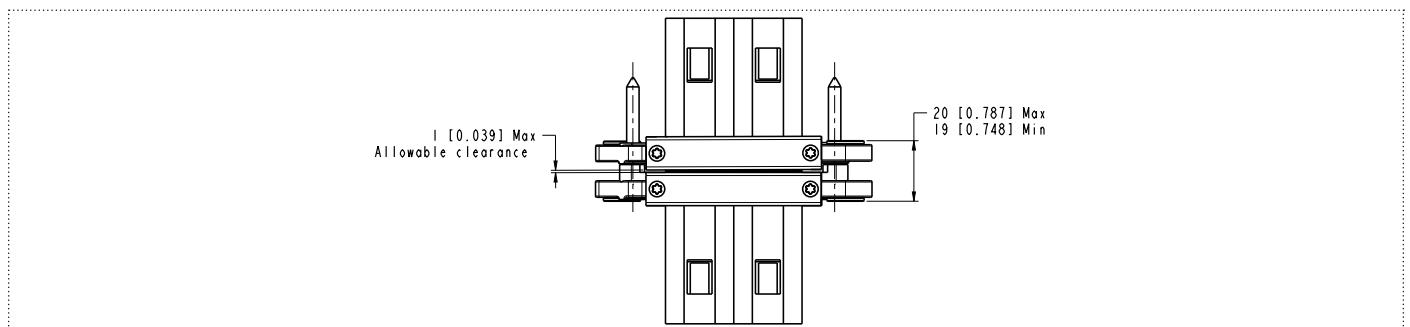
## Panel cutout



PLUG P/N 507781



## MATED CONNECTORS



All dimensions are in mm



## 200 A MODULE CONTACTS - RFM POWER

### Contacts radsok®

P/N	Designation	Current	Admissible Section	Termination
30279	Pin contact Ø 8mm	200A	50 mm² AWG 0	Crimp
30280	Socket contact Ø 8mm			



### RADSOK® contacts features:

- Low contact engagement/separation forces.
  - Hyperbolic lamella socket contact.
- Low contact resistance.
  - Large interface area between socket & pin.
- High mating cycle durability.
  - Demonstrated survival of 20,000 mating cycles.



### Tooling



- Crimping Hydraulic tool (pins and sockets contacts)  
P/N: **809947**

- Crimping Dies (pins and sockets contacts)  
P/N: **809948**



- Removal tool  
P/N: **809982**



# Amphenol SOCAPEX



## Amphenol Socapex

948, promenade de l'Arve BP29  
74311 Thyez Cedex - France  
Phone: +33 (0)4 50 89 28 00  
[contact@amphenol-socapex.fr](mailto:contact@amphenol-socapex.fr)  
[www.amphenol-socapex.com](http://www.amphenol-socapex.com)



## For Technical Support

+33 (0)4 50 89 28 49  
[technicalsupport@amphenol-socapex.fr](mailto:technicalsupport@amphenol-socapex.fr)  
[www.amphenol-socapex.com/technical\\_support](http://www.amphenol-socapex.com/technical_support)



## To buy our products

+33 (0)4 50 90 28 00  
[contact@amphenol-socapex.fr](mailto:contact@amphenol-socapex.fr)  
[www.amphenol-socapex.com/amphenol/sales](http://www.amphenol-socapex.com/amphenol/sales)  
Request a quote online at [www.amphenol-socapex.com/quotation\\_request](http://www.amphenol-socapex.com/quotation_request)



## Documentation

[www.amphenol-socapex.com/documentation](http://www.amphenol-socapex.com/documentation)  
To order a paper version of our catalogs, send an e-mail to [communication@amphenol-socapex.fr](mailto:communication@amphenol-socapex.fr)



[www.amphenol-socapex.com](http://www.amphenol-socapex.com)  
Follow Amphenol Socapex on social media :



This catalog uses paper from managed forests, PEFC & FSC labels, and is printed by a printer certified "Imprim'Vert®"

We reserve the right to modify our products in any way we deem necessary.  
Any duplication is prohibited, unless approved in writing.

Designed by Amphenol Socapex  
DOC-001024-ANG