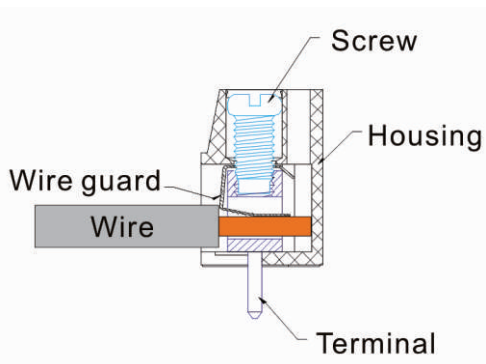
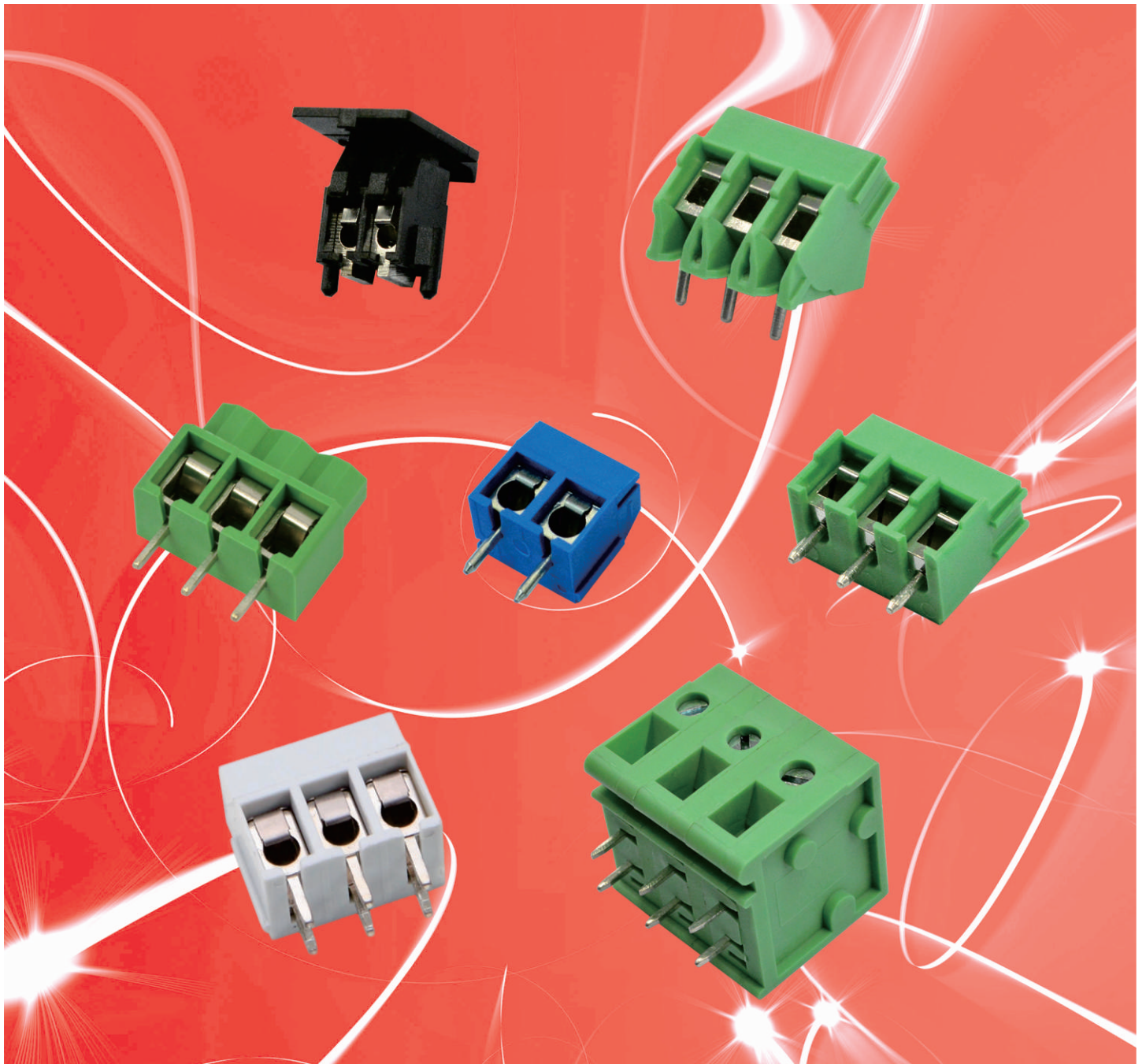


Wire Protector System

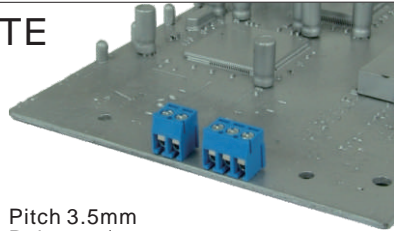


A

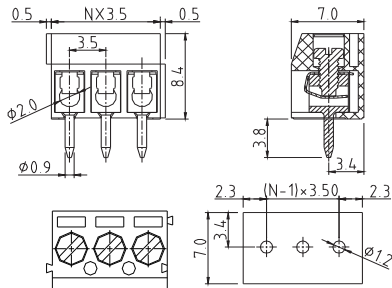


Pitch: 3.5, 3.81, 5.0, 5.08, 6.35, 7.5, 7.62, 10.0, 12.5
Rated Voltage Range(cULus): 125V-600V
Rated Current Range(cULus): 8A-57A

TE



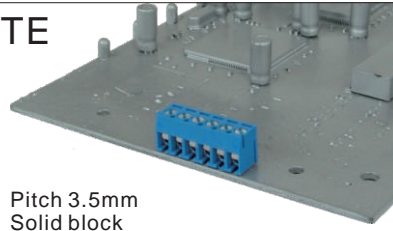
Pitch 3.5mm
Poles 2p/3p
TExx01610000G*
Number of poles



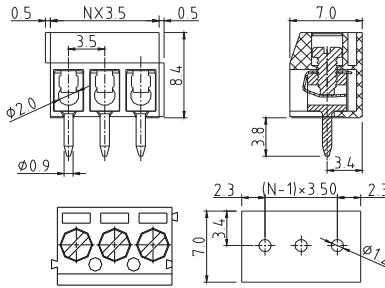
Electrical:	cULus
Voltage rating:	125V
Current rating:	10A
Wire range:	
Solid wire(AWG):	16-26
Stranded wire(AWG):	16-26
Torque(Lb-In) :	1.7

Screw:	M2
Wire strip length:	5-6mm
Withstanding Voltage:	1.25KV
Safety Approval:	

TE



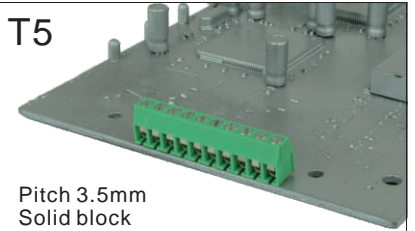
Pitch 3.5mm
Solid block
Poles 4p~24p
TExx01640000G*
Number of poles



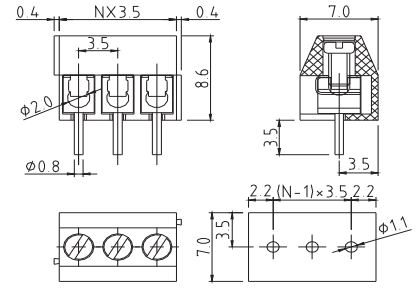
Electrical:	cULus
Voltage rating:	125V
Current rating:	10A
Wire range:	
Solid wire(AWG):	16-26
Stranded wire(AWG):	16-26
Torque(Lb-In) :	1.7

Screw:	M2
Wire strip length:	5-6mm
Withstanding Voltage:	1.25KV
Safety Approval:	

T5



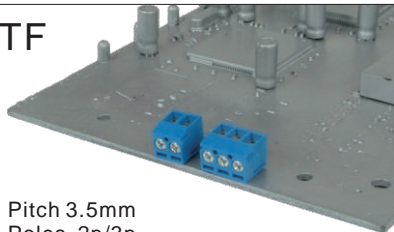
Pitch 3.5mm
Solid block
Poles 2p~24p
T5xx01500000G*
Number of poles



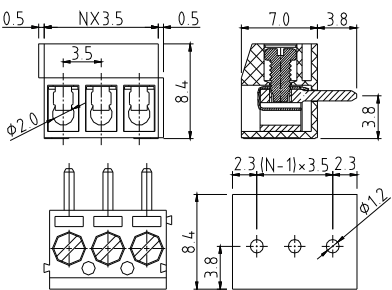
Electrical:	cULus
Voltage rating:	125V
Current rating:	10A
Wire range:	
Solid wire(AWG):	16-26
Stranded wire(AWG):	16-26
Torque(Lb-In) :	1.7

Screw:	M2
Wire strip length:	5-6mm
Withstanding Voltage:	1.25KV
Safety Approval:	

TF



Pitch 3.5mm
Poles 2p/3p
TFxx01610000G*
Number of poles



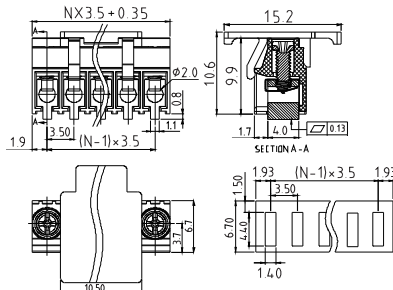
Electrical:	UL
Voltage rating:	125V
Current rating:	10A
Wire range:	
Solid wire(AWG):	16-26
Stranded wire(AWG):	16-26
Torque(Lb-In) :	1.7

Screw:	M2
Wire strip length:	5-6mm
Withstanding Voltage:	1.25KV
Safety Approval:	

EC



Pitch 3.5mm
Poles 2p~16p
SMT type(W/O pillar)
ECxx1000B000G*
Number of poles



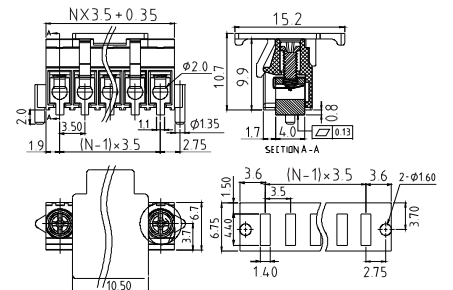
Electrical:	cULus
Voltage rating:	150V
Current rating:	10A
Wire range:	
Solid wire(AWG):	16-26
Stranded wire(AWG):	16-26
Torque(Lb-In) :	2.0

Screw:	M2.0
Wire strip length:	5-6mm
Withstanding Voltage:	1.6KV
Safety Approval:	pending

EC



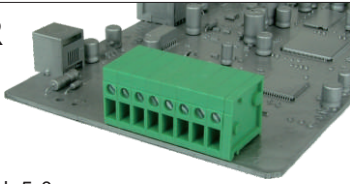
Pitch 3.5mm
Poles 2p~16p
SMT type(With pillar)
ECxx1001B000G*
Number of poles



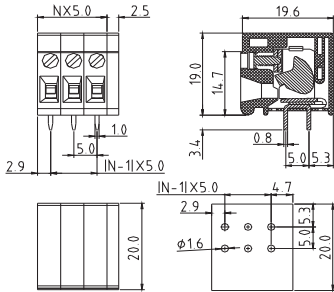
Electrical:	cULus
Voltage rating:	150V
Current rating:	10A
Wire range:	
Solid wire(AWG):	16-26
Stranded wire(AWG):	16-26
Torque(Lb-In) :	2.0

Screw:	M2.0
Wire strip length:	5-6mm
Withstanding Voltage:	1.6KV
Safety Approval:	pending

TR



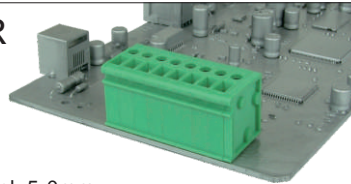
Pitch 5.0mm
Horizontal(180D wire inlet)
Poles 1p~24p
TRxx05510000G*(Row spacing 5.0mm)
Number of poles



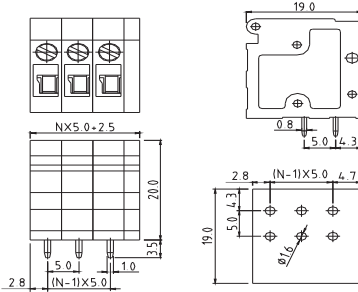
Electrical:	cULus	TUV
Voltage rating:	300V	300V
Current rating:	20A	32A
Wire range:	0.34-4.0mm ²	
Solid wire(AWG):	12-22	
Stranded wire(AWG):	12-22	
Torque:	2.4Lb-In	0.27N.m

Screw:	M2.5
Wire strip length:	10-11mm
Withstanding Voltage:	1.6KV 2.5KV
Safety Approval:	

TR



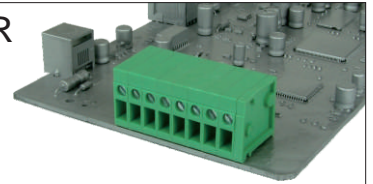
Pitch 5.0mm
Vertical(90D wire inlet)
Poles 1p~24p
TRxx05500000G*(Row spacing 5.0mm)
Number of poles



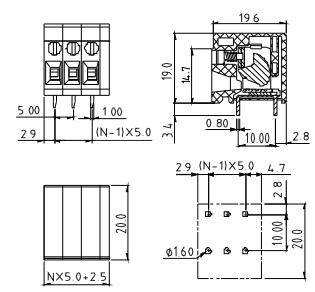
Electrical:	cULus	TUV
Voltage rating:	300V	300V
Current rating:	20A	32A
Wire range:	0.34-4.0mm ²	
Solid wire(AWG):	12-22	
Stranded wire(AWG):	12-22	
Torque:	2.4Lb-In	0.27N.m

Screw:	M2.5
Wire strip length:	10-11mm
Withstanding Voltage:	1.6KV 2.5KV
Safety Approval:	

TR



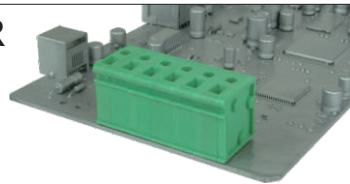
Pitch 5.0mm
Horizontal(180D wire inlet)
Poles 1p~24p
TRxx0551A000G*(Row spacing 10.0mm)
Number of poles



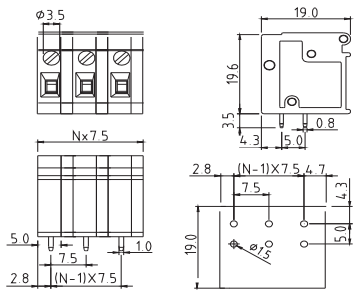
Electrical:	cULus
Voltage rating:	300V
Current rating:	20A
Wire range:	
Solid wire(AWG):	12-22
Stranded wire(AWG):	12-22
Torque(Lb-In) :	2.4

Screw:	M2.5
Wire strip length:	10-11mm
Withstanding Voltage:	1.6KV
Safety Approval:	

TR



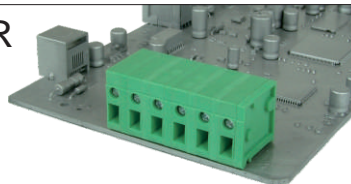
Pitch 7.5mm
Vertical(90D wire inlet)
Poles 1p~16p
TRxx25500000G*(Row spacing 5.0mm)
Number of poles



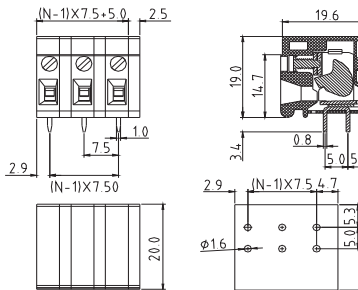
Electrical:	cULus
Voltage rating:	300V
Current rating:	20A
Wire range:	
Solid wire(AWG):	12-22
Stranded wire(AWG):	12-22
Torque(Lb-In) :	2.4

Screw:	M2.5
Wire strip length:	10-11mm
Withstanding Voltage:	1.6KV
Safety Approval:	

TR



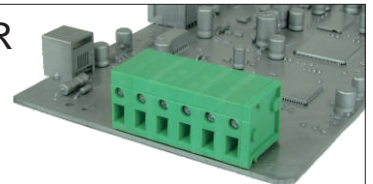
Pitch 7.5mm
Horizontal(180D wire inlet)
Poles 1p~16p
TRxx25510000G*(Row spacing 5.0mm)
Number of poles



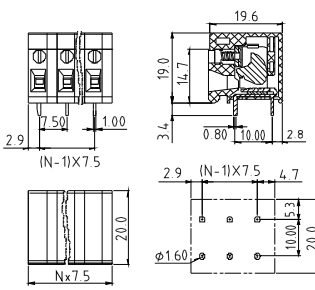
Electrical:	cULus
Voltage rating:	300V
Current rating:	20A
Wire range:	
Solid wire(AWG):	12-22
Stranded wire(AWG):	12-22
Torque(Lb-In) :	2.4

Screw:	M2.5
Wire strip length:	10-11mm
Withstanding Voltage:	1.6KV
Safety Approval:	

TR



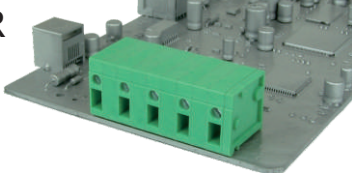
Pitch 7.5mm
Horizontal(180D wire inlet)
Poles 1p~16p
TRxx2551A000G*(Row spacing 10.0mm)
Number of poles



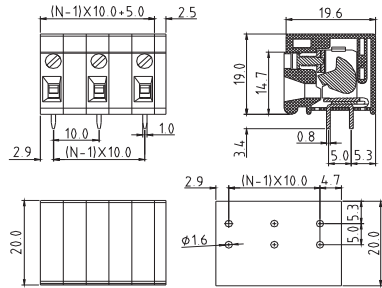
Electrical:	cULus
Voltage rating:	300V
Current rating:	20A
Wire range:	
Solid wire(AWG):	12-22
Stranded wire(AWG):	12-22
Torque(Lb-In) :	2.4

Screw:	M2.5
Wire strip length:	10-11mm
Withstanding Voltage:	1.6KV
Safety Approval:	



TR



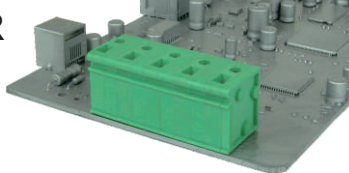
Pitch 10.0mm
Horizontal(180D wire inlet)
Poles 1p~12p
TRxx15510000G*(Row spacing 5.0mm)
Number of poles



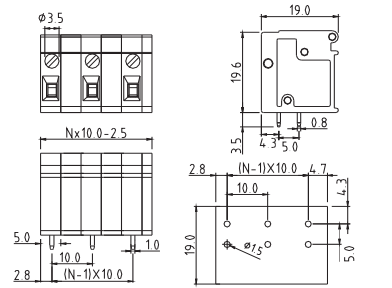
Electrical:	cULus	TUV
Voltage rating:	300V	300V
Current rating:	20A	32A
Wire range:	0.34-4.0mm ²	
Solid wire(AWG):	12-22	
Stranded wire(AWG):	12-22	
Torque:	2.4Lb-In	0.27N.m

Screw:	M2.5	
Wire strip length:	10-11mm	
Withstanding Voltage:	1.6KV	2.5KV
Safety Approval:		



TR



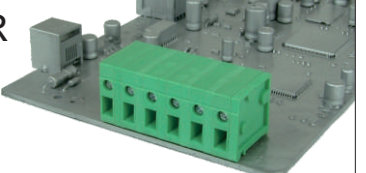
Pitch 10.0mm
Vertical(90D wire inlet)
Poles 1p~12p
TRxx15500000G*(Row spacing 5.0mm)
Number of poles



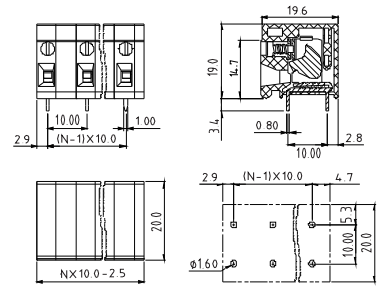
Electrical:	cULus	TUV
Voltage rating:	300V	300V
Current rating:	20A	32A
Wire range:	0.34-4.0mm ²	
Solid wire(AWG):	12-22	
Stranded wire(AWG):	12-22	
Torque:	2.4Lb-In	0.27N.m

Screw:	M2.5	
Wire strip length:	10-11mm	
Withstanding Voltage:	1.6KV	2.5KV
Safety Approval:		


TR



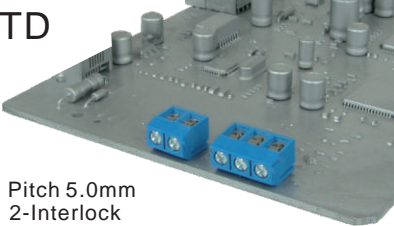
Pitch 10.0mm
Horizontal(180D wire inlet)
Poles 1p~12p
TRxx1551A000G*(Row spacing 10.0mm)
Number of poles



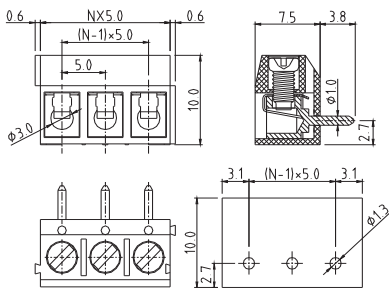
Electrical:	cULus
Voltage rating:	300V
Current rating:	20A
Wire range:	
Solid wire(AWG):	12-22
Stranded wire(AWG):	12-22
Torque(Lb-In) :	2.4

Screw:	M2.5
Wire strip length:	10-11mm
Withstanding Voltage:	1.6KV
Safety Approval:	



TD




Pitch 5.0mm
2-Interlock
Poles 2p/3p
TDxx01610000G*
Number of poles



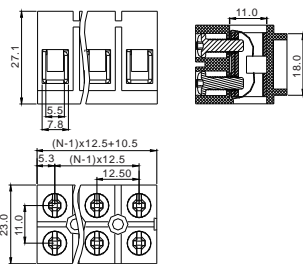
Electrical:	cULus	TUV
Voltage rating:	250V	130V
Current rating:	16A	17.5A
Wire range:	0.5-1.5mm ²	
Solid wire(AWG):	14	
Stranded wire(AWG):	16	
Torque:	2.6Lb-In	0.4N.m

Screw:	M2.6	
Wire strip length:	5-6mm	
Withstanding Voltage:	1.5KV	1.25KV
Safety Approval:		


EN



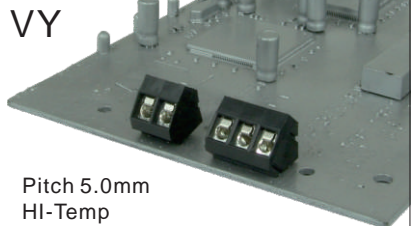
Pitch 12.5mm
Solid block
Poles 2p~6p
ENxx04800000G*
Number of poles



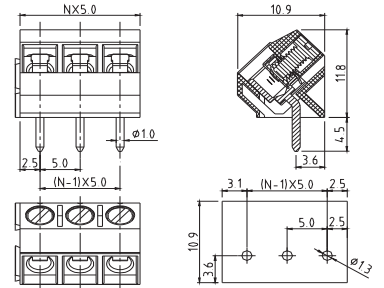
Electrical:	cULus
Voltage rating:	300V
Current rating:	57A
Wire range:	
Solid wire(AWG):	6-22
Stranded wire(AWG):	6-22
Torque(Lb-In) :	13

Screw:	M4
Wire strip length:	8-9mm
Withstanding Voltage:	1.6KV
Safety Approval:	


VY



Pitch 5.0mm
HI-Temp
Poles 2p/3p
VYxx010C0000G*
Number of poles

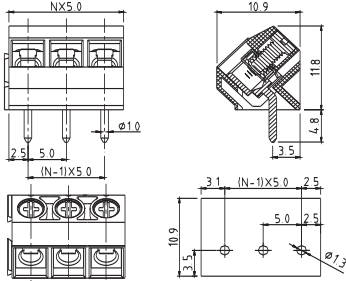


Electrical:	cULus
Voltage rating:	300V
Current rating:	15A
Wire range:	
Solid wire(AWG):	14-22
Stranded wire(AWG):	14-22
Torque(Lb-In) :	3.5

Screw:	M2.6
Wire strip length:	6-7mm
Withstanding Voltage:	1.6KV
Safety Approval:	

VY

Pitch 5.0mm
Poles 2p/3p
VYxx0160000G*
Number of poles

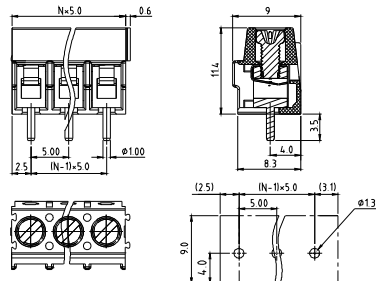


Electrical:	cULus
Voltage rating:	300V
Current rating:	15A
Wire range:	
Solid wire(AWG):	14-22
Stranded wire(AWG):	14-22
Torque(Lb-In) :	3.5

Screw:	M2.6
Wire strip length:	6-7mm
Withstanding Voltage:	1.6KV
Safety Approval:	

KY

Pitch 5.0mm
Poles 2p/3p Square hole
Horizontal(180D wire inlet)
KYxx0150000G*
Number of poles

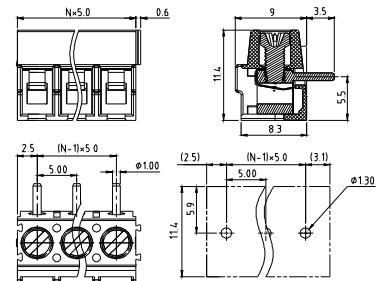


Electrical:	cULus	CQC
Voltage rating:	300V	250V
Current rating:	15A	24A
Wire range:		
Solid wire(AWG):	12-24	0.2-2.5mm ²
Stranded wire(AWG):	12-24	0.2-2.5mm ²
Torque:	3.0Lb-In	0.4N.m

Screw:	M2.6	
Wire strip length:	5-6mm	
Withstanding Voltage:	1.6KV	2KV
Safety Approval:		

KY

Pitch 5.0mm
Poles 2p/3p Square hole
Vertical(90D wire inlet)
KYxx01510000G*
Number of poles

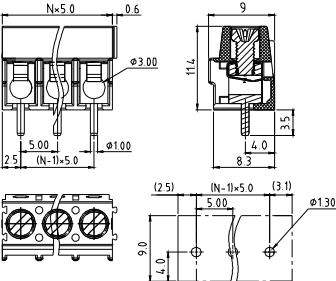


Electrical:	cULus	CQC
Voltage rating:	300V	250V
Current rating:	15A	24A
Wire range:		
Solid wire(AWG):	12-24	0.2-2.5mm ²
Stranded wire(AWG):	12-24	0.2-2.5mm ²
Torque:	3.0Lb-In	0.4N.m

Screw:	M2.6	
Wire strip length:	5-6mm	
Withstanding Voltage:	1.6KV	2KV
Safety Approval:		

KY

Pitch 5.0mm
Poles 2p/3p Round hole
Horizontal(180D wire inlet)
KYxx01520000G*
Number of poles

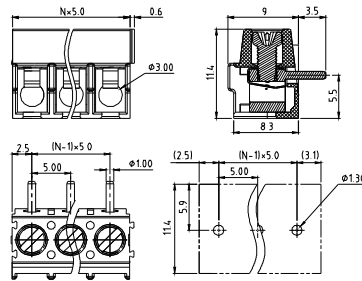


Electrical:	cULus
Voltage rating:	300V
Current rating:	15A
Wire range:	
Solid wire(AWG):	12-24
Stranded wire(AWG):	12-24
Torque(Lb-In) :	3.0

Screw:	M2.6
Wire strip length:	5-6mm
Withstanding Voltage:	1.6KV
Safety Approval:	

KY

Pitch 5.0mm
Poles 2p/3p Round hole
Vertical(90D wire inlet)
KYxx01530000G*
Number of poles

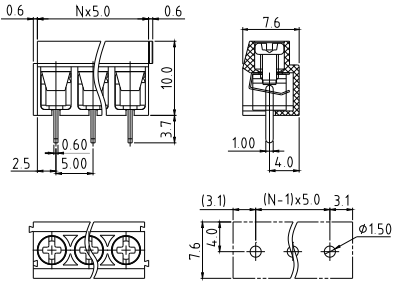


Electrical:	cULus
Voltage rating:	300V
Current rating:	15A
Wire range:	
Solid wire(AWG):	12-24
Stranded wire(AWG):	12-24
Torque(Lb-In) :	3.0

Screw:	M2.6
Wire strip length:	5-6mm
Withstanding Voltage:	1.6KV
Safety Approval:	

T3

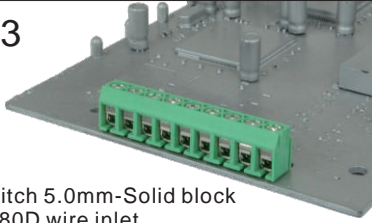
Pitch 5.0mm
2-Interlock
Poles 2p/3p
T3xx04510000G*
Number of poles



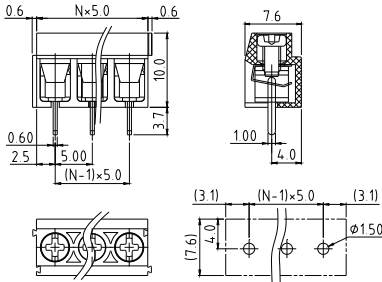
Electrical:	UL	TUV
Voltage rating:	300V	250V
Current rating:	8A	12A
Wire range:		0.2-2.5mm ²
Solid wire(AWG):	14-26	
Stranded wire(AWG):	14-26	
Torque :	3.5Lb-In	0.4N.m

Screw:	M2.5	
Wire strip length:	5-6mm	
Withstanding Voltage:	1.6KV	2KV
Safety Approval:		

T3



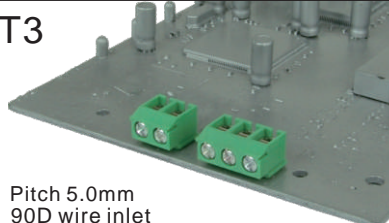
Pitch 5.0mm-Solid block
180D wire inlet
Poles 4p~24p
T3xx04540000G*
Number of poles



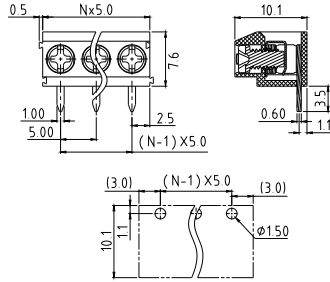
Electrical:	cULus	TUV
Voltage rating:	300V	250V
Current rating:	8A	12A
Wire range:	0.2-2.5mm ²	
Solid wire(AWG):	14-26	
Stranded wire(AWG):	14-26	
Torque :	3.5Lb-In	0.4N.m

Screw:	M2.5	
Wire strip length:	5-6mm	
Withstanding Voltage:	1.6KV	2KV
Safety Approval:		

T3



Pitch 5.0mm
90D wire inlet
Poles 2p/3p
T3xx04530000G*
Number of poles



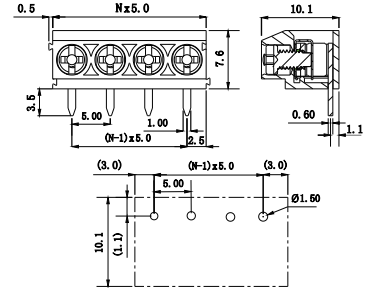
Electrical:	cULus	TUV
Voltage rating:	300V	250V
Current rating:	8A	12A
Wire range:	0.2-2.5mm ²	
Solid wire(AWG):	14-26	
Stranded wire(AWG):	14-26	
Torque :	3.5Lb-In	0.4N.m

Screw:	M2.5	
Wire strip length:	5-6mm	
Withstanding Voltage:	1.6KV	2KV
Safety Approval:		

T3



Pitch 5.0mm-Solid block
90D wire inlet
Poles 4p/5p
T3xx046500B0G*
Number of poles



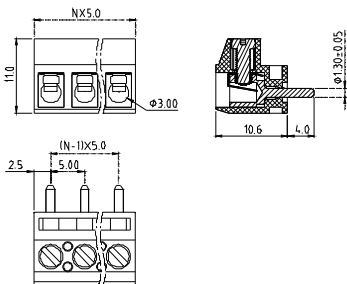
Electrical:	cULus
Voltage rating:	300V
Current rating:	8A
Wire range:	0.2-2.5mm ²
Solid wire(AWG):	14-26
Stranded wire(AWG):	14-26
Torque(Lb-In) :	3.5

Screw:	M2.5
Wire strip length:	5-6mm
Withstanding Voltage:	1.6KV
Safety Approval:	

E7



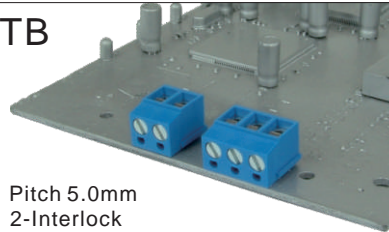
Pitch 5.0mm
Poles 2p~20p
Solid block
E7xx01500000G*
Number of poles



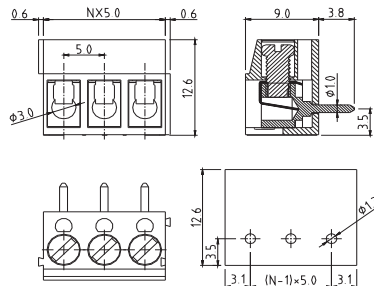
Electrical:	cULus
Voltage rating:	300V
Current rating:	15A
Wire range:	0.5-2.5mm ²
Solid wire(AWG):	14-22
Stranded wire(AWG):	14-22
Torque(Lb-In) :	3.5

Screw:	M2.6
Wire strip length:	5-6mm
Withstanding Voltage:	1.6KV
Safety Approval:	

TB



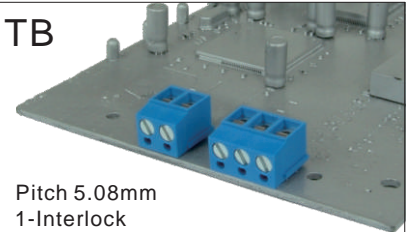
Pitch 5.0mm
2-Interlock
Poles 2p/3p
TBxx01610000G*
Number of poles



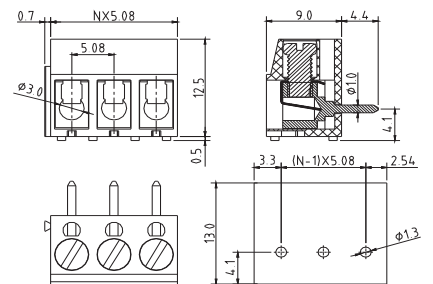
Electrical:	UL	TUV
Voltage rating:	250V	250V
Current rating:	16A	24A
Wire range:	0.5-2.5mm ²	
Solid wire(AWG):	14	
Stranded wire(AWG):	14-22	
Torque(Lb-In) :	2.6Lb-In	0.5N.m

Screw:	M3	
Wire strip length:	6-7mm	
Withstanding Voltage:	1.5KV	2.0KV
Safety Approval:		

TB

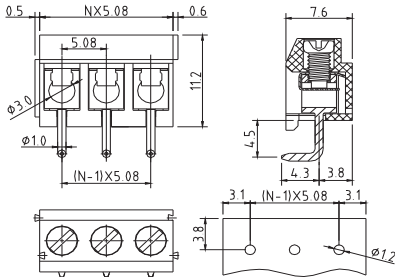
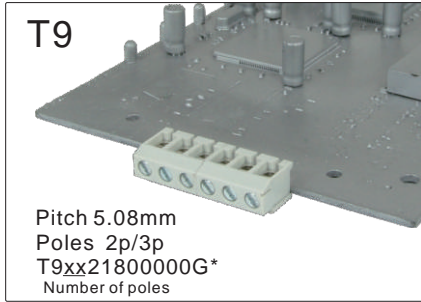


Pitch 5.08mm
1-Interlock
Poles 2p/3p
TBxx21600000G*
Number of poles



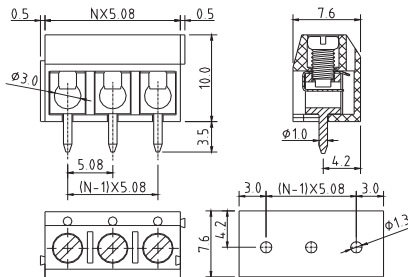
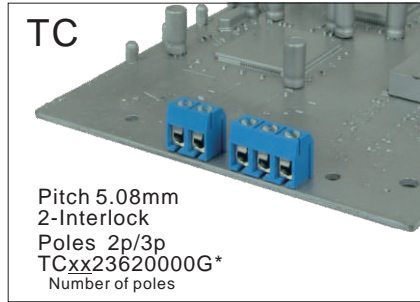
Electrical:	cULus	TUV
Voltage rating:	250V	250V
Current rating:	15A	24A
Wire range:	0.5-2.5mm ²	
Solid wire(AWG):	14-22	
Stranded wire(AWG):	14-22	
Torque(Lb-In) :	3.5Lb-In	0.5N.m

Screw:	M3	
Wire strip length:	4-5mm	
Withstanding Voltage:	1.6KV	2.0KV
Safety Approval:		



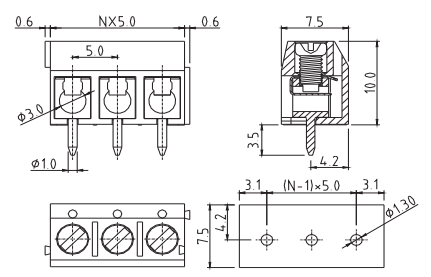
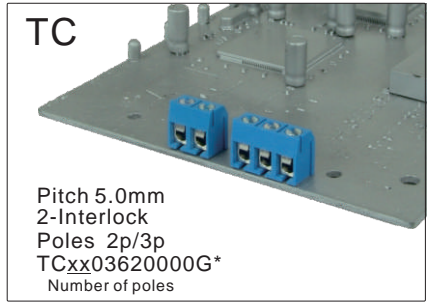
Electrical:	cULus
Voltage rating:	300V
Current rating:	15A
Wire range:	
Solid wire(AWG):	14-24
Stranded wire(AWG):	14-24
Torque(Lb-In) :	3.2

Screw:	M2.6
Wire strip length:	5-6mm
Withstanding Voltage:	1.6KV
Safety Approval:	



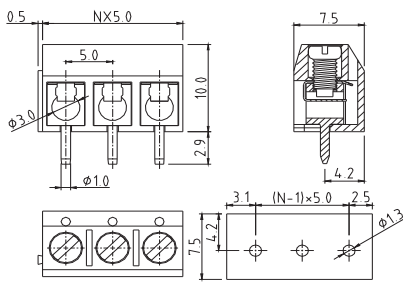
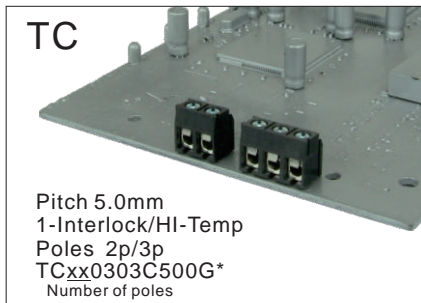
Electrical:	cULus
Voltage rating:	300V
Current rating:	16A
Wire range:	
Solid wire(AWG):	14-22
Stranded wire(AWG):	14-22
Torque(Lb-In) :	2.6

Screw:	M2.6
Wire strip length:	5-6mm
Withstanding Voltage:	1.6KV
Safety Approval:	



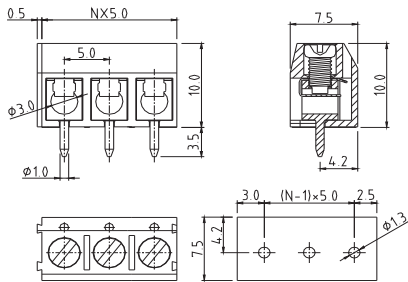
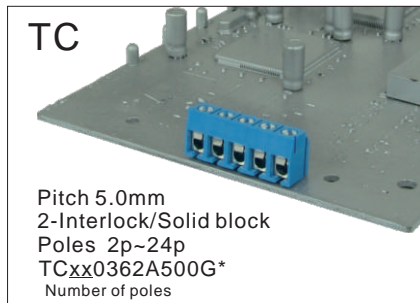
Electrical:	cULus	VDE
Voltage rating:	300V	250V
Current rating:	16A	17.5A
Wire range:	0.5 - 1.5mm ²	
Solid wire(AWG):	14-22	
Stranded wire(AWG):	14-22	
Torque :	2.6Lb-In	0.4N.m

Screw:	M2.6
Wire strip length:	5-6mm
Withstanding Voltage:	1.6KV
Safety Approval:	



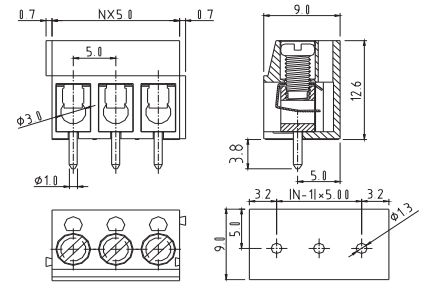
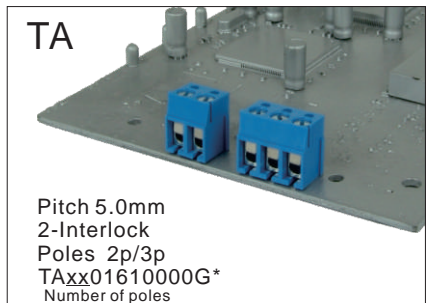
Electrical:	cULus
Voltage rating:	300V
Current rating:	16A
Wire range:	
Solid wire(AWG):	14-22
Stranded wire(AWG):	14-22
Torque(Lb-In) :	2.6

Screw:	M2.6
Wire strip length:	5-6mm
Withstanding Voltage:	1.6KV
Safety Approval:	



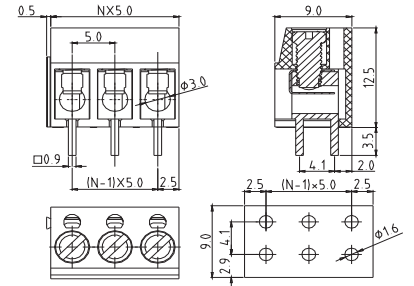
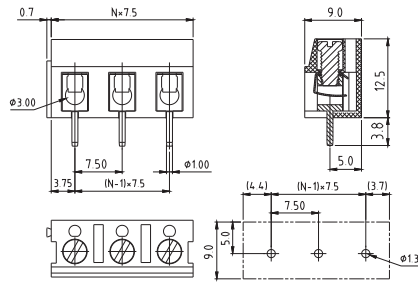
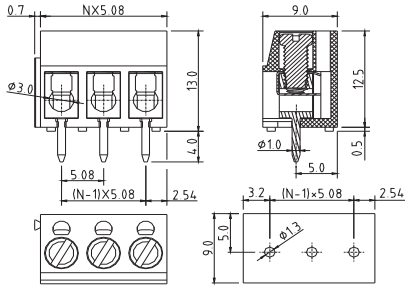
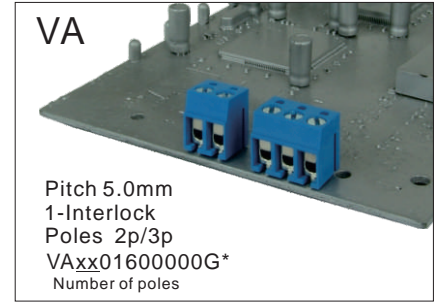
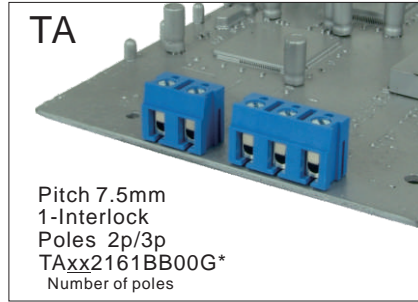
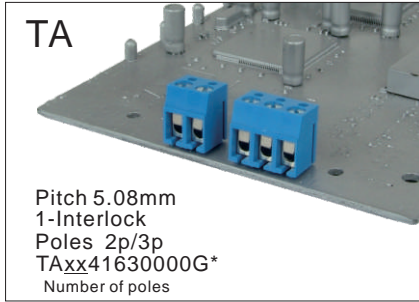
Electrical:	cULus	VDE
Voltage rating:	300V	250V
Current rating:	16A	17.5A
Wire range:	0.5 - 1.5mm ²	
Solid wire(AWG):	14-22	
Stranded wire(AWG):	14-22	
Torque :	2.6Lb-In	0.4N.m

Screw:	M2.6	
Wire strip length:	5-6mm	
Withstanding Voltage:	1.6KV	2KV
Safety Approval:		



Electrical:	UL	VDE
Voltage rating:	250V	250V
Current rating:	16A	16A
Wire range:	0.5 - 2.5mm ²	
Solid wire(AWG):	14-26	
Stranded wire(AWG):	14-26	
Torque :	2.6Lb-In	0.5N.m

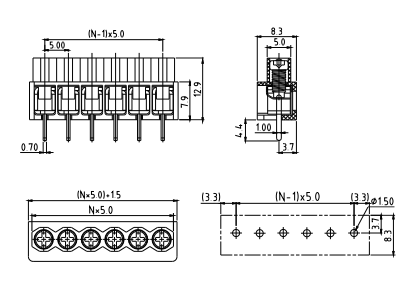
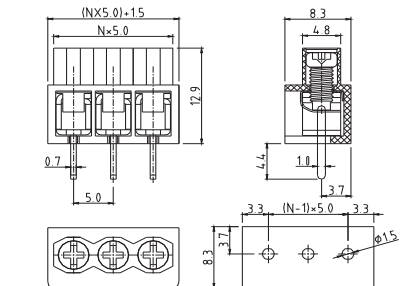
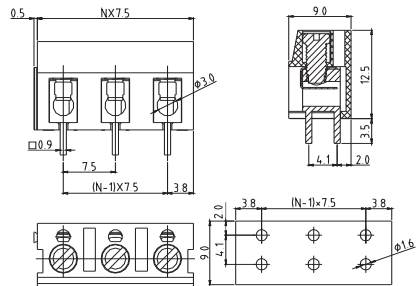
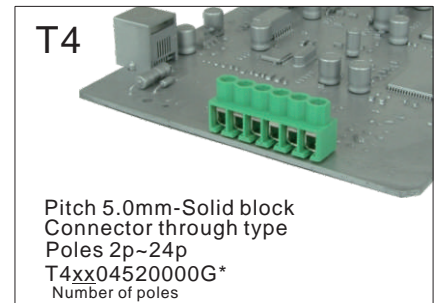
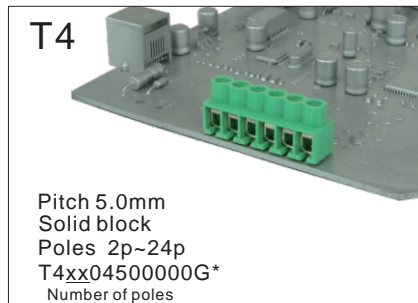
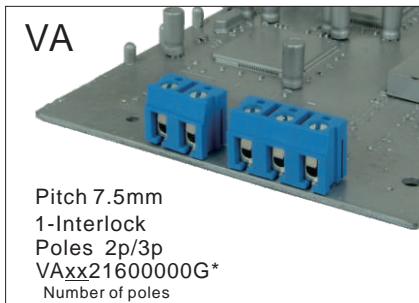
Screw:	M3	
Wire strip length:	6-7mm	
Withstanding Voltage:	1.5KV	2KV
Safety Approval:		



Electrical:	cULus
Voltage rating:	300V
Current rating:	15A
Wire range:	
Solid wire(AWG):	14-22
Stranded wire(AWG):	14-22
Torque(Lb-In) :	3.5
Screw:	M3
Wire strip length:	6-7mm
Withstanding Voltage:	1.6KV
Safety Approval:	

Electrical:	UL
Voltage rating:	250V
Current rating:	16A
Wire range:	
Solid wire(AWG):	14-22
Stranded wire(AWG):	14-22
Torque(Lb-In) :	3.5
Screw:	M3
Wire strip length:	6-7mm
Withstanding Voltage:	1.5KV
Safety Approval:	

Electrical:	cULus
Voltage rating:	300V
Current rating:	15A
Wire range:	
Solid wire(AWG):	14-22
Stranded wire(AWG):	14-22
Torque(Lb-In) :	3.5
Screw:	M3
Wire strip length:	6-7mm
Withstanding Voltage:	1.6KV
Safety Approval:	

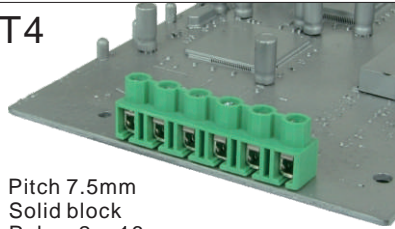


Electrical:	cULus
Voltage rating:	300V
Current rating:	15A
Wire range:	
Solid wire(AWG):	14-22
Stranded wire(AWG):	14-22
Torque(Lb-In) :	3.5
Screw:	M3
Wire strip length:	6-7mm
Withstanding Voltage:	1.6KV
Safety Approval:	

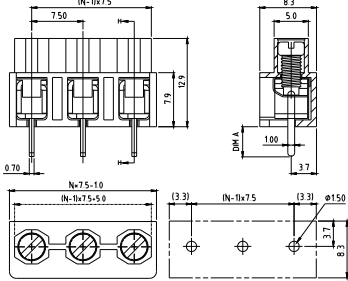
Electrical:	cULus	VDE
Voltage rating:	300V	450V
Current rating:	10A	17.5A
Wire range:		0.75 - 4.0mm ²
Solid wire(AWG):	12-20	
Stranded wire(AWG):	12-20	
Torque :	3.5Lb-In	0.4N.m
Screw:	M3	
Wire strip length:	6-7mm	
Withstanding Voltage:	1.6KV	2.5KV
Safety Approval:		

Electrical:	cULus
Voltage rating:	300V
Current rating:	10A
Wire range:	
Solid wire(AWG):	12-20
Stranded wire(AWG):	12-20
Torque(Lb-In) :	3.5
Screw:	M3
Wire strip length:	6-7mm
Withstanding Voltage:	1.6KV
Safety Approval:	

T4

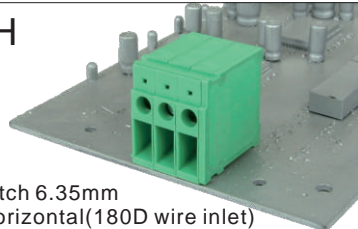


Pitch 7.5mm
Solid block
Poles 2p~16p
T4xx24500000G*
Number of poles

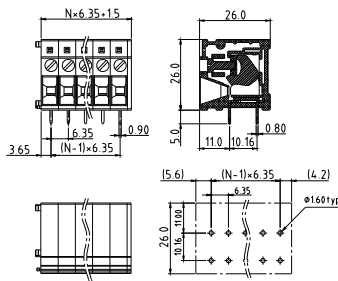


Electrical:	cULus
Voltage rating:	300V
Current rating:	10A
Wire range:	
Solid wire(AWG):	12-20
Stranded wire(AWG):	12-20
Torque(Lb-In) :	3.5
Screw:	M3
Wire strip length:	6-7mm
Withstanding Voltage:	1.6KV
Safety Approval:	

KH

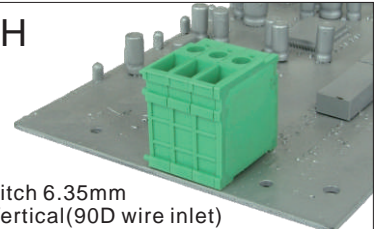


Pitch 6.35mm
Horizontal(180D wire inlet)
Poles 1p~16p
KHxx05510000G*
Number of poles

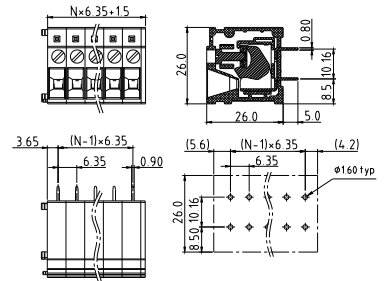


Electrical:	cULus
Voltage rating:	300V
Current rating:	30A
Wire range:	
Solid wire(AWG):	10-24
Stranded wire(AWG):	10-24
Torque(Lb-In) :	4.3
Screw:	M3
Wire strip length:	15-16mm
Withstanding Voltage:	1.6KV
Safety Approval:	

KH

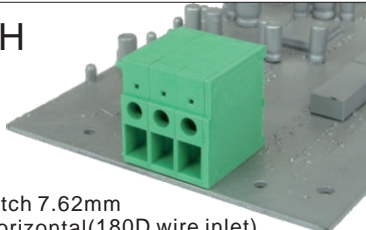


Pitch 6.35mm
Vertical(90D wire inlet)
Poles 1p~16p
KHxx05500000G*
Number of poles

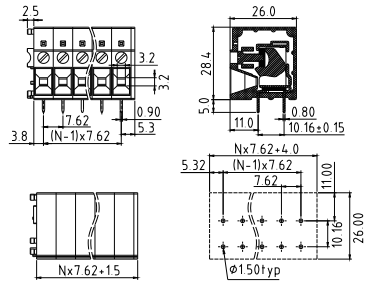


Electrical:	cULus
Voltage rating:	300V
Current rating:	30A
Wire range:	
Solid wire(AWG):	10-24
Stranded wire(AWG):	10-24
Torque(Lb-In) :	4.3
Screw:	M3
Wire strip length:	15-16mm
Withstanding Voltage:	1.6KV
Safety Approval:	

KH

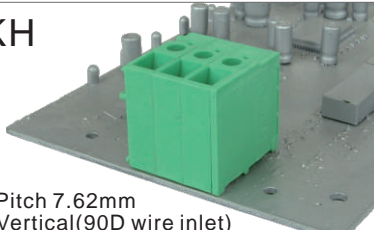


Pitch 7.62mm
Horizontal(180D wire inlet)
Poles 1p~16p
KHxx15510000G*
Number of poles

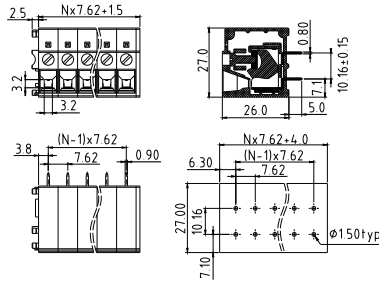


Electrical:	cULus
Voltage rating:	300V
Current rating:	30A
Wire range:	
Solid wire(AWG):	10-24
Stranded wire(AWG):	10-24
Torque(Lb-In) :	4.3
Screw:	M3
Wire strip length:	15-16mm
Withstanding Voltage:	1.6KV
Safety Approval:	

KH



Pitch 7.62mm
Vertical(90D wire inlet)
Poles 1p~16p
KHxx15500000G*
Number of poles

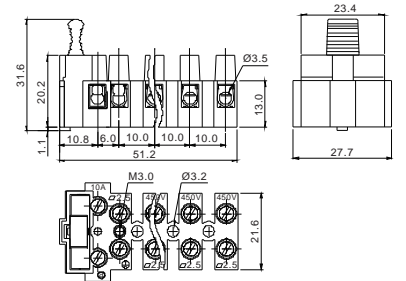


Electrical:	cULus
Voltage rating:	300V
Current rating:	30A
Wire range:	
Solid wire(AWG):	10-24
Stranded wire(AWG):	10-24
Torque(Lb-In) :	4.3
Screw:	M3
Wire strip length:	15-16mm
Withstanding Voltage:	1.6KV
Safety Approval:	

TM



Poles 3p/4p/5p
TMxx19000000G*
Number of poles



Electrical:	cULus
Voltage rating:	400V
Current rating:	10A
Wire range:	
Solid wire(AWG):	14-22
Stranded wire(AWG):	14-22
Torque :	3.5Lb-In
Screw:	M3
Wire strip length:	7-8mm
Withstanding Voltage:	1.8KV
Safety Approval:	

