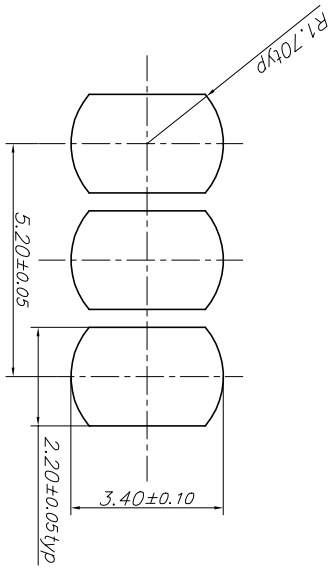
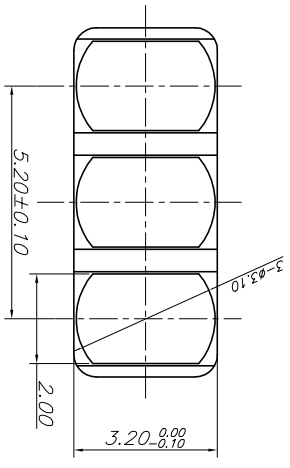
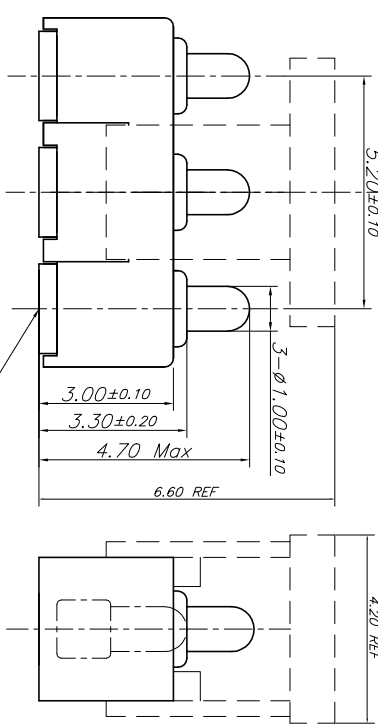
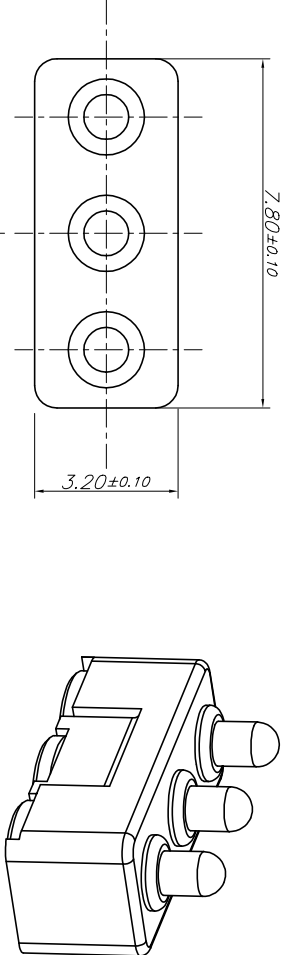


This document is the property of Amphenol Corporation and is delivered on a non-exclusive basis for the sole use of the recipient. It is not to be reproduced, stored in a retrieval system, or transmitted in any form or by any means, electronic, mechanical, photocopying, recording, or otherwise, without the prior written permission of Amphenol Corporation. All rights reserved. Amphenol Corporation and its subsidiaries are not responsible for any damage or loss of data or information resulting from the use of this document.



RECOMMENDED PCB MOUNTING PATTERN

NOTE:

1. Material:
 - a) Insulator: LCP, UL94V-0, Black.
 - b) Plunger: Brass, plating 0.3um Au over 0.25um Ni.
 - c) Barrel: Brass, plating flash 0.1um Au.
 - d) Springs: BeCu wire, plating flash 0.1um Au.
2. Pin operation force: 100±20gf/1.2mm stroke.
3. Insulation resistance: 100Mohm Min.
4. Contact resistance: 50m ohm Max.
5. Operation temperature: -40~+85°C.
6. Mechanical life: 5k cycle min.
7. Order number is BATP-0302-001.
8. Material should be fulfilled Amphenol Spec#SSN001..

Customer drawing

| SYMBOL | | REVISIONS | | DATE | APPROVED |
|--------|--------|-------------|-------------|---------|----------|
| SYM | EON | DESCRIPTION | FIRST ISSUE | | |
| B | HK2632 | | | 7/30/03 | lp |

| | | | | | |
|----------------------------|--------|--------------------------|--|---------------------------------|--|
| UNLESS OTHERWISE SPECIFIED | | APPROVAL | | DATE | |
| TOLERANCES | | DRAWN | | | |
| U.S. | METRIC | CHECKED | | | |
| X, +/- | 0.30 | CHECKED | | | |
| XX, +/- | 0.20 | | | | |
| XXX, +/- | 0.15 | | | | |
| FRACTIONS +/- | | | | | |
| ANGLES +/- | 1° | | | | |
| SEE NOTES | | DRAWING FILE : | | TITLE | |
| FOR MATERIALS AND FINISHES | | DRAWING: B07GBATP0302001 | | BATTERY CONNECTOR OF 3 PIN POGO | |
| REMOVE SHARP EDGES | | ANGLE OF PROJECTION | | SIZE DRAWING NO. | |
| DIMENSIONS | | | | A3 | |
| U.S. INCHES | | | | SCALE NONE | |
| METRIC (MM) | | | | SHEET 1 OF 1 | |
| | | | | REV. B | |