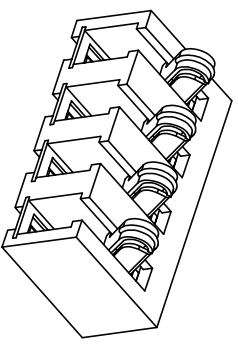
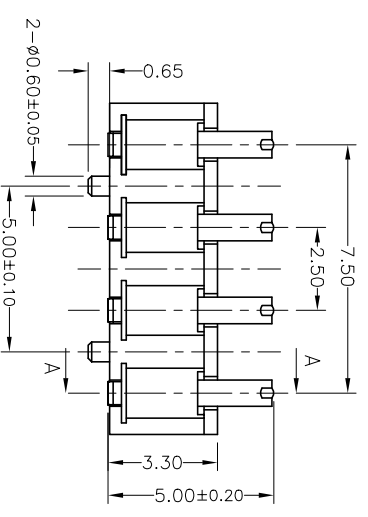
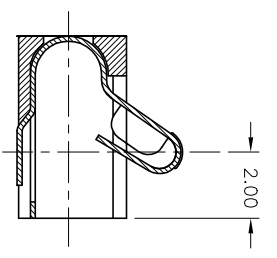
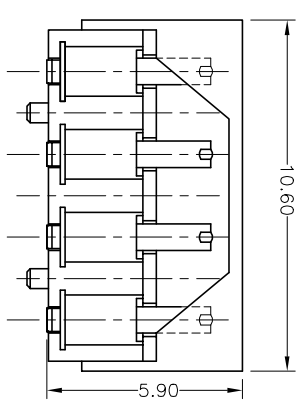
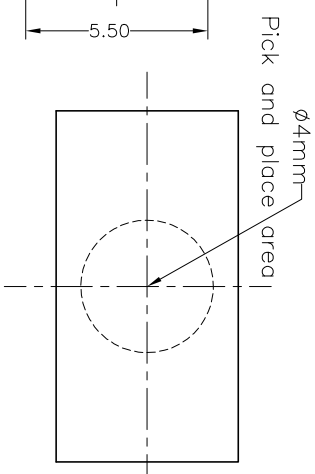
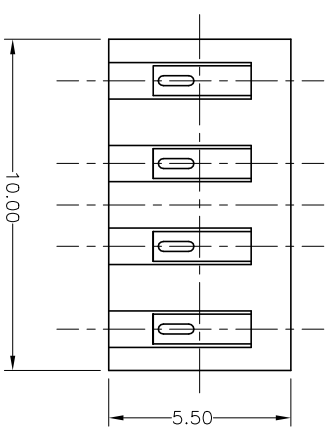
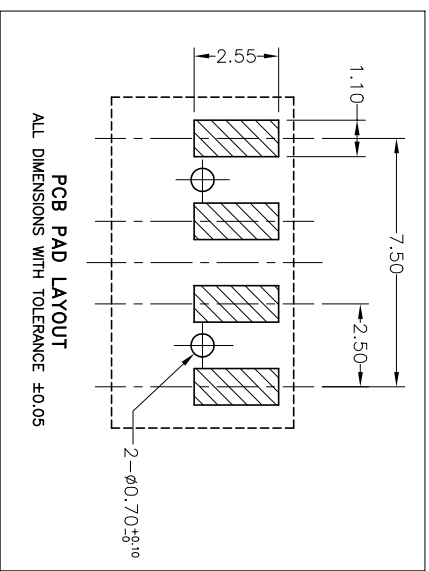


This document is the property of Amphenol Corporation and is defined as confidential information. It is not to be disclosed, reproduced or used, in whole or in part, without the prior consent of Amphenol Corporation. Amphenol Corporation and its subsidiaries and affiliates shall not be held liable for any damage or loss of information in this document.



REVISIONS				
SYM	ECN	DESCRIPTION	DATE	APPROVED
A	HK2384	RELEASE TO CUSTOMER	3/1/04	IP

NOTES:

- MATERIAL:
 - CONTACT: BERYLLIUM COPPER
 - INSULATOR: 30% GLASS-FILLED THERMOPLASTIC LCP OR EQUIVALENT UL94V-0, BLACK.
- FINISH: 15 MICRONICH (0.381 MICRON) GOLD PLATE AT MATING AREA, 100-200 MICRONICH (2.54-5.08 MICRON) TIN AT SOLDER TAIL. 50-100 MICRONICH (1.27-2.54 MICRON) NICKEL UNDERPLATED ALL OVER.
- NORMAL FORCE AT WORKING POSITION IS: 80g Min.
- PARTS TO BE PACKAGED IN ANTI-STATIC TAPE AND REEL FOR AUTOMATIC PLACEMENT. ALL PACKAGING MATERIALS TO BE APPROVED BY AMPHENOL ENGINEERING.
- ORDER PART NUMBER IS BC-33W-04F.
- MATERIAL SHOULD BE FILLED AMPHENOL SPEC# SSN001.

CUSTOMER DRAWING

UNLESS OTHERWISE SPECIFIED TOLERANCES		APPROVAL		DATE	
U.S.	METRIC	DRAWN	CHECKED		
X +/-	0.20				
.XX +/-	0.10				
.XXX +/-					
RADIIUS +/-					
ANGLES +/-					

DRAWING FILE :		TITLE	
FOR MATERIALS AND FINISHES	DRAWING BOX/CHECKOFF	SIZE	DRAWING NO.
REMOVE SHARP EDGES	ANGLE OF PROJECTION	A3	C BC-33W-04F
DIMENSIONS		SCALE	NONE
U.S. (METRIC)	INCHES (MM)	SHEET	1 OF 1

4 Pin Battery Connector

Amphenol

A

B

C

D

4

3

4

2

1

A

B

C

D