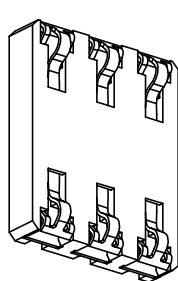
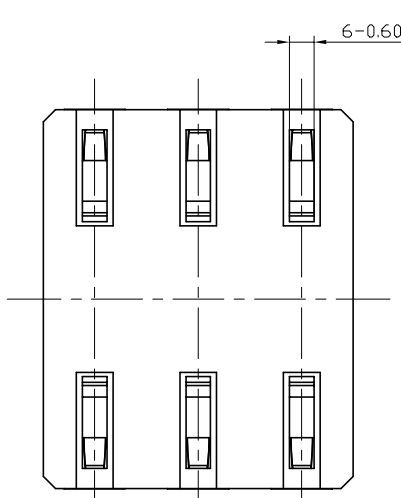
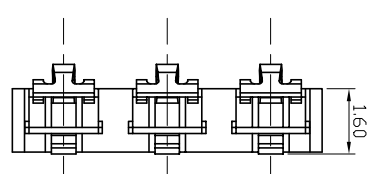
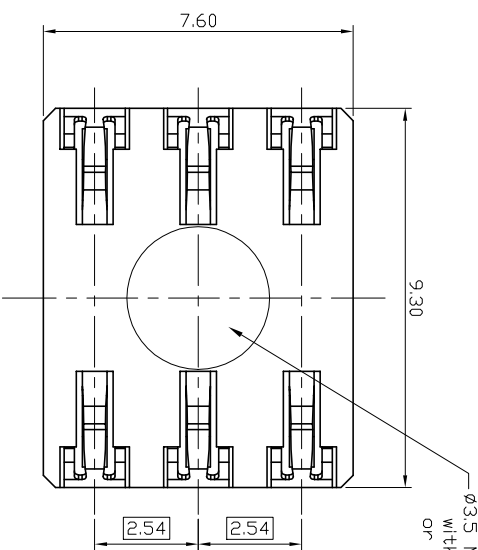


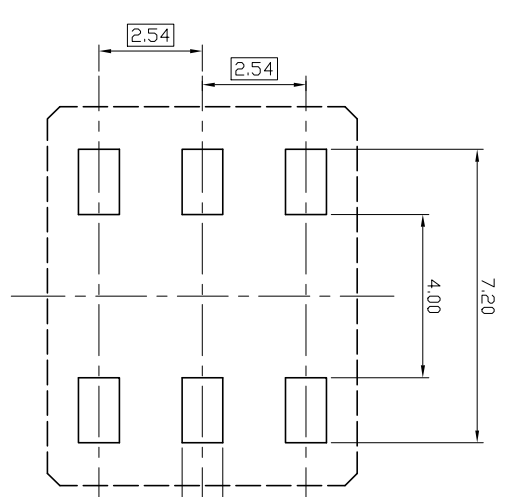
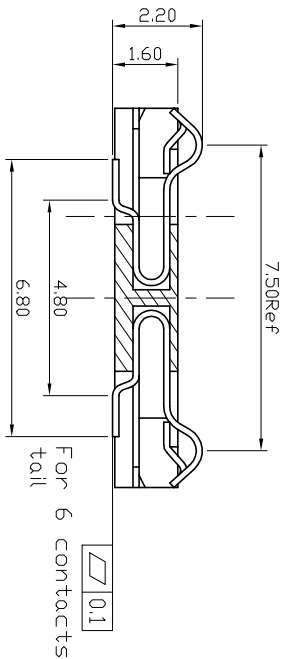
This document is the property of Amphenol Corporation and is delivered on a "loan" basis. It is to be used for the manufacture of parts only. It is not to be reproduced, copied, or distributed without the prior consent of Amphenol Corporation. Amphenol Corporation reserves the right to modify this document without notice.

CUSTOMER DRAWING

REVIEWS		DATE	APPROVED
SYM	ECN		
A HK	DRAWING RELEASE	/03	Michael.JP



Ø3.5 Max. suck area, without burr, bumps or ejector marks.



Recommended PCB Layout

NOTE:

- CONTACTS CHIP CARDS ACCORDING TO ISO7816 AND PLUG IN In SIM-CARDS.
- MATERIAL: 30% GLASS-FILLED THERMOPLASTIC LCP BLACK UL 94V-0;
b CONTACT: PHOSPHOR BRONZE CS191R-H;
3.FINISH:
a CONTACT POINT: Au OVER THE GOLD PLATING THICKNESS REFERS TO PART NUMBER SYSTEM
2um MIN Ni UNDERPLATED
b SOLDERING TAIL: Gold flash
2um MIN Ni UNDERPLATED;
4 CONTACT NORMAL FORCE AT MATED POSITION 0.5±0.2N;
5 PARTS TO BE PACKAGED IN ANTI-STATIC TAPE AND REEL FOR AUTOMATIC PLACEMENT. ALL PACKAGING MATERIALS TO BE APPROVED BY AMPHENOL ENGINEERING.

ORDER P/N
CAD-0621-16X

- 0 -Unplated
- 1 -0.76um Min Gold plate(s)
- 2 -0.38um Min Gold plate(s)
- 3 -Gold Flash, 0.025um Min.

UNLESS OTHERWISE SPECIFIED		APPROVAL		DATE	
TOLERANCES	U.S.	DRAWN	CHECKED		
	METRIC				
X	+/-				
XX	+/-				
XXX	+/-				
ANGLES	+/-				
FOR MATERIALS AND FINISHES					
REMOVE SHARP EDGES					
DRAWING FILE : \DRAWING\CAD\CAD0082116X					
ANGLE OF PRODUCTION					
TITLE					
6 Pin Simblock, 1.6mm Smartcard Connector					
DIMENSIONS		SCALE		SHEET 1 OF 1	
U.S.	INCHES	A3	NONE		
METRIC	MM				
REV. A					