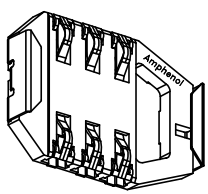
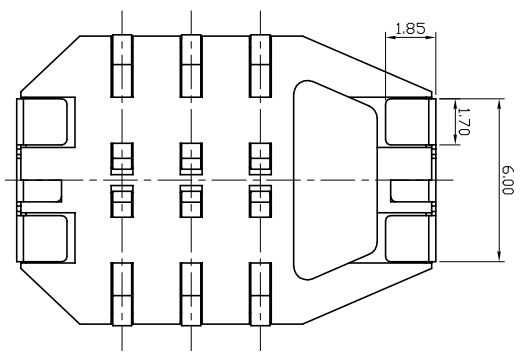
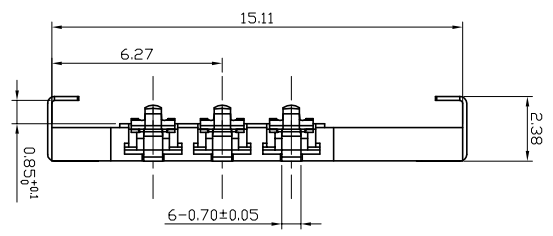
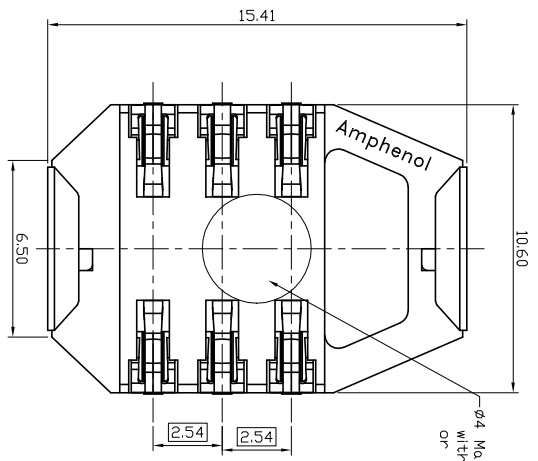


This document is the property of Amphenol Corporation and is delivered on the express condition that it is not to be disclosed, reproduced or used, in whole or in part, for any purpose other than that intended by Amphenol Corporation without its prior consent. All rights are reserved. It is prohibited to disseminate or to use any information in this document.

CUSTOMER DRAWING

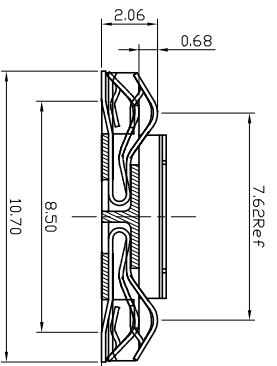
REVISIONS				
SYM	ECN	DESCRIPTION	DATE	APPROVED
A	HK2909	RELEASE TO PRODUCTION.	3/17/04	IP



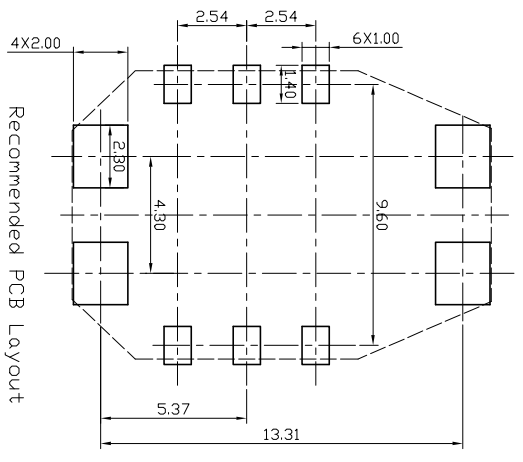
- Part Number System
CAD-06WM-24X
- 0 - Unplated
 - 1 - 0.76um Min Gold plated
 - 2 - 0.38um Min Gold plated
 - 3 - Gold flash, 0.025um Min.

NOTE:

1. Contacts chip cards according to ISD7816 and Plug In SIM-Cards.
 2. Material: LCP BLACK UL 94V-0
 3. Contact: Phosphor Bronze CS191R-H
 4. Material should be fulfilled Amphenol SPEC# SNN001
- Finish of contact:
Au over, the gold plating thickness refers to part number system
2um MIN Ni underplated
Soldering point
4um SnPb over
2um MIN Ni underplated
c: Plate: stainless steel
Finish of plate:
2um MIN all Sn
2um MIN Ni underplated
d: Contact normal force for 0.5±0.2N
3. Packing: Tape & Reel, See packing method
4. Material should be fulfilled Amphenol SPEC# SNN001



For 6 contacts tail and 4 solder tab area



Recommended PCB Layout

UNLESS OTHERWISE SPECIFIED TOLERANCES		APPROVAL		DATE	
U.S.	METRIC	DRAWN	CHECKED		
X +/-	0.15				
XX +/-	0.05				
XXX +/-	0.05				
ANGLES +/-	1°				
FOR MATERIALS AND FINISHES SEE NOTES		DRAWING FILE :		TITLE	
REMOVE SHARP EDGES		DRAWING CAD/CAD-06WM-24X		6 Pin Mini Wingblock Smoldcard Connector	
DIMENSIONS		ANGLE OF PROJECTION		SIZE DRAWING NO.	
U.S. INCHES	MM			A3 CCAD-06WM-24X	
				SCALE NONE	
				SHEET 1 OF 1	
				REV. B	

Amphenol