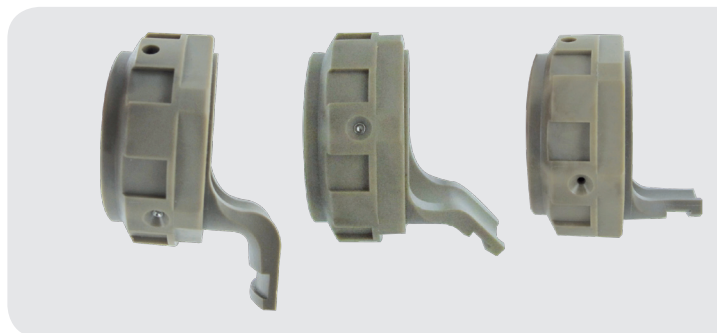


# ABS2216

*Composite backshells*

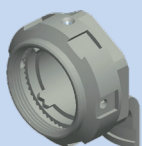
Amphenol  
Socapex



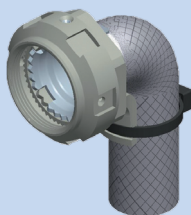
Composite backshells series for MIL-DTL-38999 series III, EN3645 connectors and Amphenol TV/CTV connectors.

- Performances meet or exceed Airbus specification ABS2216
- Light weight solution
- Quick and easy installation
- Handling temperature from -65°C to 200°C
- Anti-decoupling system to withstand shocks and vibrations in harsh environment

## 2 TYPES OF BACKSHELLS

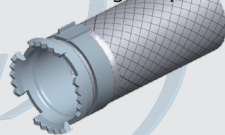


Backshell  
without EMI protection

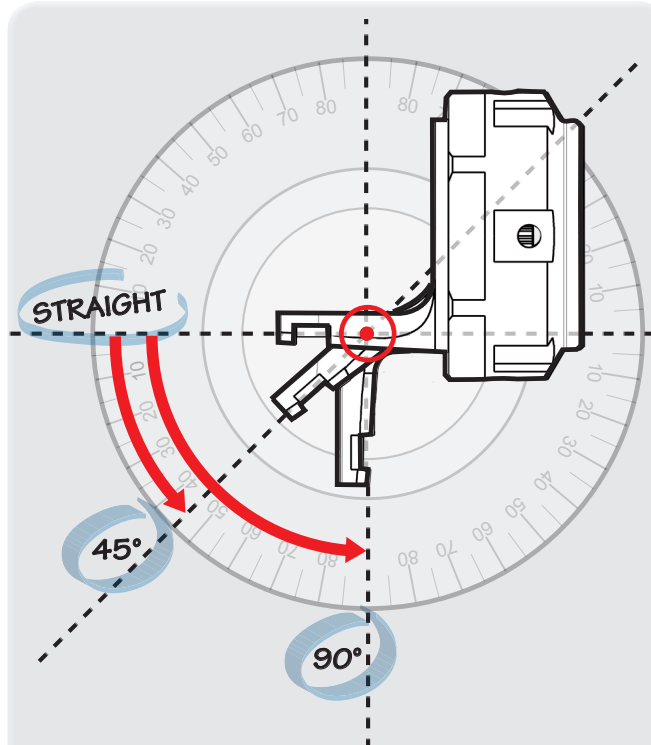


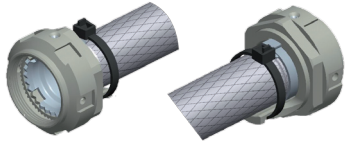
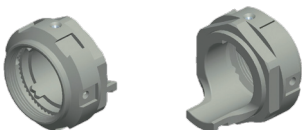

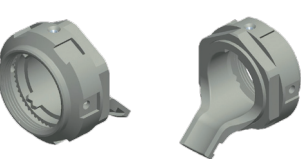
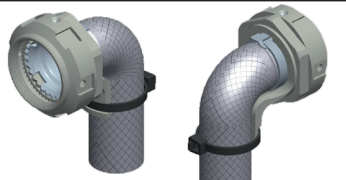
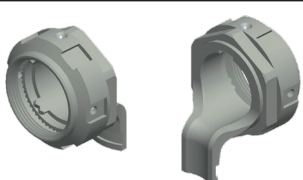
Backshell  
with EMI protection

Addition of  
a conductive  
shielding adapter



## 3 ORIENTATIONS AVAILABLE



EMI SHIELDING BACKSHELLS			NON-EMI SHIELDING BACKSHELLS		
<b>Straight backshell</b>		ABS2216 A xx W			ABS2216 A xx P
<b>45° backshell</b>		ABS2216 B xx W			ABS2216 B xx P
<b>90° backshell</b>		ABS2216 C xx W			ABS2216 C xx P

## HOW TO ORDER

Series	<b>ABS2216</b>	<b>A</b>	<b>11</b>	<b>W</b>
<b>Type of backshell</b> <b>A</b> : Straight backshell <b>B</b> : 45° backshell <b>C</b> : 90° backshell				
<b>Size of backshell</b> ( same as connector size) <b>9 - 11 - 13 - 15 - 17 - 19 - 21 - 23 - 25</b>				
<b>EMI protection</b> <b>W</b> : EMI shielding backshell (200 mm metallic braid) <b>P</b> : Non-EMI shielding backshell				

**Nota** : delivered without tie-wrap.

## SPECIAL SERVICE : Full Composite Kit



Please consult us.