

AXOS-E



This product offers a robust and protected optical connection in a small size design (o.d. 27 mm) and allows to establish a variable length daisy chain link in no time outdoor as well as indoor.

The beam diameter makes the connection insensitive to environmental contamination, temperature variations or humidity. The special design ensures an easy cleaning of the mechanical and optical connector parts.

Features

The Amphenol AXOS fiber optic expanded beam is a miniature hermaphroditic and a cost effective connector.

Technical description

- 1, 2 or 4 channel plugs and receptacles with protective caps (plastic)
- Hermaphroditic interface with rapid ramp coupling.
- Protective window to ensure an easy cleaning of the optical device.
- Moving coupling nut allows cleaning the front mechanical parts.
- Anticorrosion metal body with ergonomic protective rubber shell.
- Blind mateable by means of rubber shell guiding protuberances.
- Z : Insertion Loss : 0,8 dB typically; 1,5 dB max @ 1300 nm

(lasersource with single mode pigtail)

- Insertion Loss : 1,5 dB typically; 2 dB max @ 1300 nm
1,6 dB typically; 2,5 dB max @ 850 nm (DELSOURCE)
- Operational wavelength: 850 nm and 1300 nm.
- Fiber size: 50/125 and 62,5/125 μm .
- Cable type : 4 to 7 mm OD Tactical tight structure.
- Durability : 2500 mating cycles.
- Operating Temperature : -40°C, +85°C.
- Termination and Maintenance tool kits available.
- Drums and accessories available.

Applications

- Army, Navy and Airforce optical networks.
- Broadcasting.
- Federal emergency.
- Mining, geophysical.
- Temporary optical links.
- Industrial moving links.

Channels arrangements



2 Channels

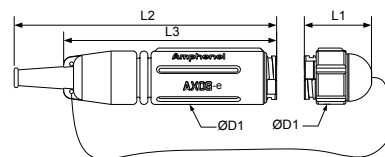


4 Channels

AXOS-e : line drawings (dimensions in mm)

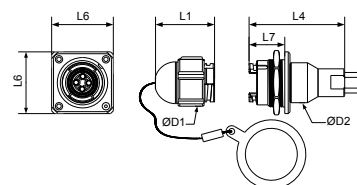
AXOS 06M : plug with protective cap (06M shown)

SERIES	L1	L2	L3	$\phi D1$
AXOS-e	36	133	108	27



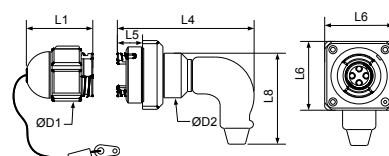
AXOS 00P : Square flange receptacle rear mount

SERIES	L1	L4	L5	L6	$\phi D1$	$\phi D2$
AXOS-e	36	55	13	35.5	27	23



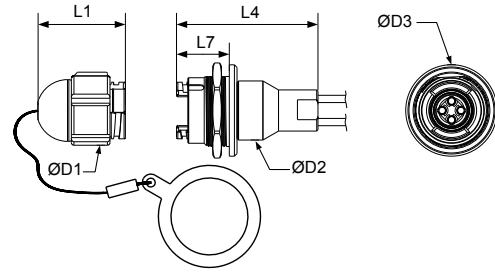
AXOS-77P : Square flange receptacle Rear mount 77p - 90° BACKSHELL

SERIES	L1	L4	L5	L6	L8	$\phi D1$	$\phi D2$
AXOS-e	36	70 max	13	35.5	40	27	23



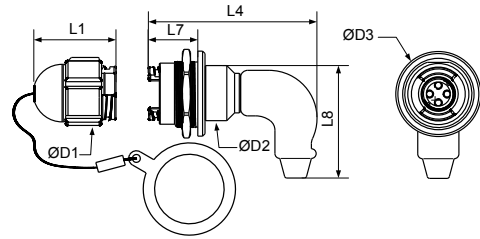
AXOS 77p JAM nut receptacle rear mount

SERIES	L1	L4	L7	φD1	φD2	φD3
AXOS-e	36	55	20.5	27	23	35.5

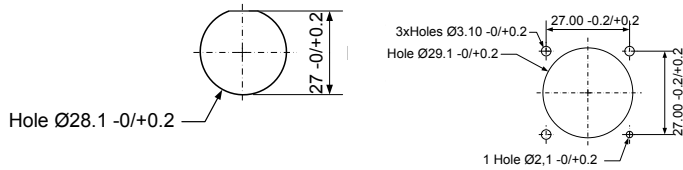


AXOS 00p JAM nut receptacle rear mount 90° BACKSHELL

SERIES	L1	L4	L7	L8	□D1	□D2	□D3
AXOS-e	36	70 max	20,5	40	27	23	35.5



AXOS - Panel Cutout



How to order AXOS-e piece part

HOW TO ORDER	AXOS	00	M90	4	02	Z	55A	BPP
	AXOS	06	M	2	01	Z	55A	BPF
	AXOS	77	P00	4	02	Z	28X	BPE
Series AXOS :								
Shell type 06 : Plug 77 : Jam nut receptacle 75 : Jam nut receptacle with CTOS dimension 00 : Square flange receptacle								
Backshell For Plug M : Backshell For Plug								
Backshell For Receptacle P : Pigtails termination C00 : Straight backshell for tactical cable C90 : 90° backshell for tactical cable M00 : Sealed straight backshell for tactical cable M90 : Sealed 90° backshell for tactical cable								
Number of channels 1/2/4								
Fiber 01 : Multimode 50/125 02 : Multimode 62.5/125								
Wavelength Z : 850/1300nm								
Cable See details on cable definition Example For pigtails cable : 28X For Tactical Cable : 55X								
Protective Cap BPF : Dust cap for Plug BPE : Dust cap for Jam nut receptacle BPP : Dust cap for Square flange Metallic protective cap (consult us)								

**How to order AXOS-e Patchcord
AXOS-e plug to AXOS-e plug**

HOW TO ORDER	AXOS		FF		2	01	Y	0600	55A	BPF
	AXOS	L3	FF		2	01	Y	0600	55A	BPF
	AXOS		F00	M90	4	02	Z	1.50	70X	BPF/E
	AXOS		F77	C00	2	05	W	0020	60X	BPF/P
Series										
AXOS :										
Drum (Select The drum on page 26-28)										
__ : Thrownable drum										
LX : Compact drum										
TOX : Tactical drum										
P01 : Trolley with composite drum										
Shell type										
FF : Plug to plug										
F00 : Plug to square flange receptacle										
F77 : Plug to jam nut receptacle										
Backshell (only for receptacle)										
C00 : straight backshell for tactical cable										
C90 : 90° backshell for tactical cable										
M00 : Sealed straight backshell for tactical cable										
M90 : Sealed 90° backshell for tactical cable										
Number of channels										
1/2/4										
Fiber										
01 : Multimode 50/125										
02 : Multimode 62.5/125										
Wavelength										
Z : 850/1300nm										
Cable length										
X.XX : L<10m										
XXXX : L>10m										
Cable										
See details on cable definition										
Example										
For Tactical Cable : 55X										
Protective Cap										
BPF : Dust cap for plug to plug patchcord										
BPF/E : Dust cap for plug and jam nut receptacle										
BPF/P : Dust cap for plug and square flange receptacle										
Metallic protective cap (consult us)										

How to order AXOS-e Patchcord AXOS-e connector to others type connectors

HOW TO ORDER	AXOS	00	M90	4	02	Z	2.50	55X	BPP	FC
	AXOS	F		2	01	Z	1.25	55A	BPF	SCD
	AXOS	77	P00	4	01	Z	3.50	15X	BPE	LC
Series										
AXOS :										
Shell type for first end										
F : Plug										
00 : Square flange receptacle										
77 : Jam nut receptacle										
Backshell (only for receptacle)										
P : Pigtailed termination										
C00 : straight backshell for tactical cable										
C90 : 90° backshell for tactical cable										
M00 : Sealed straight backshell for tactical cable										
M90 : Sealed 90° backshell for tactical cable										
Number of channels										
1/2/4										
Fiber										
01 : Multimode 50/125										
02 : Multimode 62.5/125										
Wavelength										
Z : 850/1300nm										
Cable length										
X.XX : L<10m										
XXXX : L>10m										
Cable										
See details on cable definition										
Example : For Tactical Cable : 55X										
Protective Cap										
BPF : Dust cap for Plug										
BPE : Dust cap for Jam nut receptacle										
BPP : Dust cap for Square flange										
Metallic protective cap (consult us)										
Patchcord other end connector										
STA : Startop (38999 series III with optical termini 29504 only MM)										
TVOP : TVOP (38999 series III with optical termini 2.5mm only MM)										
CTOS : CTOS connector only MM										
HMA : HMA two connector only MM										
EUROCOM : EUROCOM II connector only MM										
ST/SC/SCD (duplex SC)/FC/LC/LCD (Duplex LC)/MHF (MTRJ female)										
For others connector consult us										