

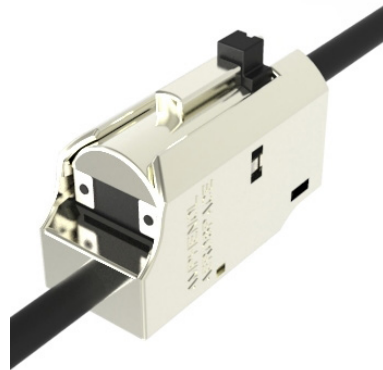
Cabin Systems Connector – CSC™

Where Inspiration and Necessity Connect

Amphenol's CSC™ was inspired by the need to replace COTS USB and RJ45 in-line connections with an aerospace qualified solution with latching capabilities.

FEATURES

- Low Cost
- Simplified Termination
- Small Form Factor
- Secure Latching
- Tool-less & Fast Mate
- Lightweight



OVERVIEW

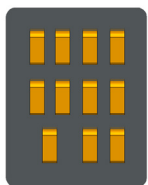
Applications in today's Aerospace Cabin Systems demand affordable interconnects with a highly reliable, lightweight and small form factor design. Amphenol's innovative Cabin Systems Connector (CSC™) has been developed to not only meet these industry expectations but to revolutionize the ease of cable assembly and installation. Amphenol's CSC™ brings a unique pass-through mating sequence and Insulation Displacement contact termination to the aerospace market to reduce installation time as well as reducing harness fabrication labor time.

The tool free mating is as simple as pull and click. To unmate, simply push the tab on top and pull the connection apart. Nothing could be simpler. Installation in hard to reach, blind mate areas can be done with one hand.

CSC™ meets the RoHS and EWIS requirements for the cabin environment.

Amphenol's new CSC™ is a result of unique inspiration meeting true necessity.

Contact Arrangements



GbE + 3x Power



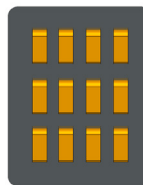
USB 2.0



Power



GbE



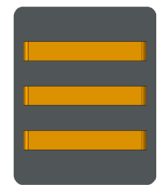
12x Signal (HD)



Optical



Bus Bar



Bus Bar

Please inquire about samples with quick delivery for your prototyping and testing needs.

CONTACT US:

Jon Prouty

Business Development Director

Amphenol - Commercial Air Division

jprouty@amphenol-aa.com

Amphenol[®]
Aerospace

Call 800-678-0141 or visit us at www.amphenol-aerospace.com

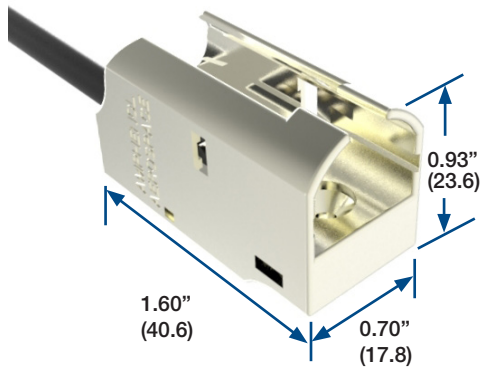
Cabin Systems Connector – CSC™

PDS-266

Where Inspiration and Necessity Connect

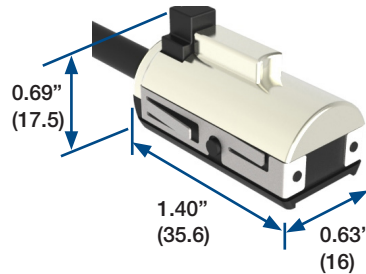
DIMENSIONS

Receptacle



9.5 grams
(with contacts)

Plug



6 grams
(with contacts)

Mated Pair



KEY FEATURES AND BENEFITS:

- Low Cost / Lightweight
- Shell to Shell Shielding
- EWIS and RoHS Compliant
- Secure Positive Locking Feature
- Compact and Lightweight
- Quick Termination Process
- Meets Smoke, Toxicity and Flammability Requirements
- High Reliability
- Multiple Contact Arrangements

MATERIALS (RoHS COMPLIANT):

- Shell: High Performance Thermoplastic, Nickel Plated (as specified)
- Latching Plate, Ferrule: Stainless Steel, Nickel Plated
- Contacts: Copper Alloy, Gold Plated

APPLICATIONS:

- Cabin & Proximity Lighting
- Sensors
- IFE&C
- In-Seat Wiring
- In-line Connections
- Panel/Equipment Connections

PERFORMANCE:

- Operating Temperature: -55C to 125C
- Durability: 500 Mating Cycles
- Dielectric Withstanding Voltage: 500V, <2mA leakage
- Fluid Resistance: Compliant to EN2591-315

Notice: Specifications are subject to change without notice. Contact your nearest Amphenol Corporation Sales Office for the latest specifications. All statements, information and data given herein are believed to be accurate and reliable but are presented without guarantee, warranty, or responsibility of any kind, expressed or implied. Statements or suggestions concerning possible use of our products are made without representation or warranty that any such use is free of patent infringement and are not recommendations to infringe any patent. The user should assume that all safety measures are indicated or that other measures may not be required. Specifications are typical and may not apply to all connectors.

Amphenol[®]
Aerospace

AMPHENOL is a registered trademark of Amphenol Corporation. ©2015 Amphenol Corporation 1/13/2015

Call 800-678-0141 or visit us at www.amphenol-aerospace.com