

Compression Mount PCB Connectors

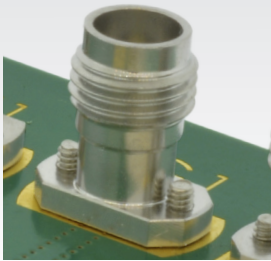
Features & Benefits

- Solderless compression mount for fast and easy installation
- Cost effective solutions for testing
- Durable and rugged design
- SMA, 2.92mm and 2.4mm series available
- Customized PCB footprint design through simulation optimization
- Available with various screw lengths for your application
- COTS versions readily available through distribution

Applications

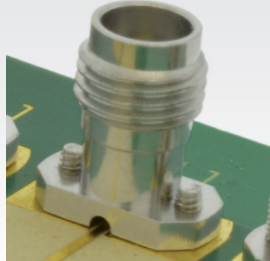
- RF test and measurement boards
- High Speed Digital component test
- Stripline, microstrip and coplanar waveguide PCB launch

Stripline



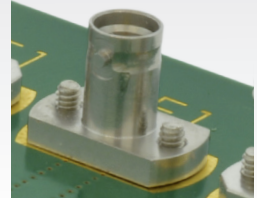
Launches directly to a plated via leading to a stripline transmission line within the PCB

CPW / Microstrip



Launches directly to a Coplanar Waveguide or Microstrip trace, which exits through a small mouse hole on the side

QuarterBack® SMP



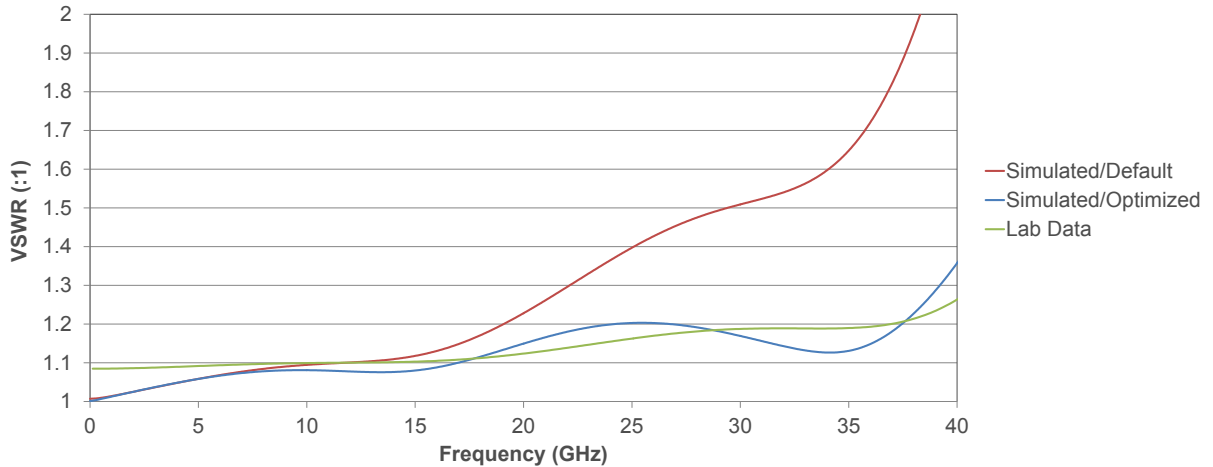
Positive bayonet locking in small compression mount form factor

Specifications

Electrical	SMA	2.92mm	2.4mm	QB® SMP
Impedance	50Ω	50Ω	50Ω	50Ω
Max Frequency	26.5 GHz	40 GHz	50 GHz	40 GHz

Mechanical	SMA	2.92mm	2.4mm	QB® SMP
Intermateability	3.5mm, 2.92mm	SMA, 3.5mm	1.85mm	SMP
Recommended Mating Torque	7 - 10 in-lbs	7 - 10 in-lbs	5 - 7 in-lbs	Bayonet
Recommended Board Mount Torque	12 in - oz	12 in - oz	12 in - oz	12 in - oz
Max Screw Length	0.150" + Max Board Thickness	0.150" + Max Board Thickness	0.195" + Max Board Thickness	0.175" + Max Board Thickness
Mating End Clearance	0.218" Min	0.218" Min	0.236" Min	0.130" Min

**2.92mm Compression Mount
In Stripline Application (Gated)
Simulated vs. Lab Data**



Better Performance through Simulation

- Simple layout designed with just mechanical considerations can lead to large reflections and increased losses
- Optimal footprint for your specific board stack and requirements can be generated through iterative analysis in 3D full wave electromagnetic simulation software
- With careful consideration of assembly techniques and material properties, simulation will track real world performance closely, yielding the best possible results for your application

Compression Mount Part Numbers

Series	Max Frequency	Applications	Part Number
SMA	26.5 GHz	Stripline	SF2921-61356
		CPW / Microstrip	SF2921-61345
2.92mm	40 GHz	Stripline	SF1521-60061
		CPW / Microstrip	SF1521-60070
2.4mm	50 GHz	Stripline	SF1621-60029
		CPW / Microstrip	SF1621-60026
SMP QB®	40 GHz	Stripline	SF1211-66214
		CPW / Microstrip	SF1211-66230

*Variations that include applicable PCB screws are also available

