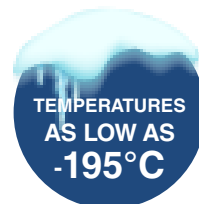
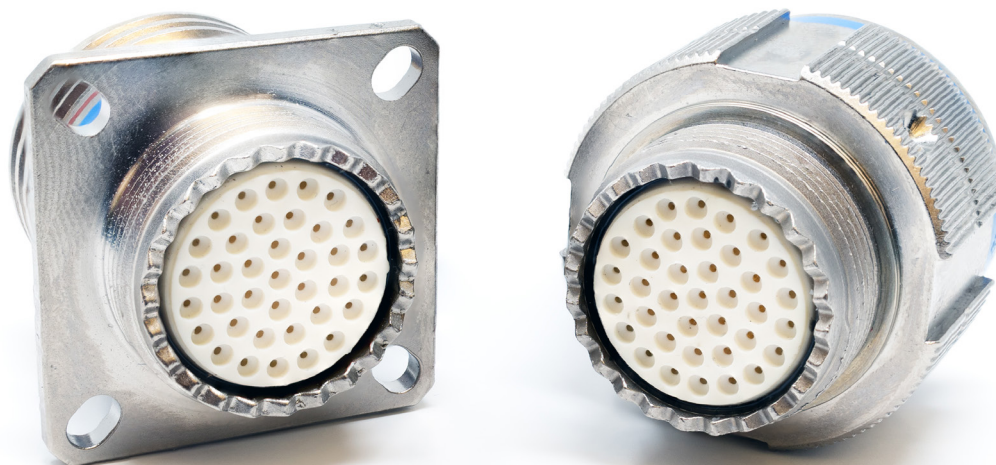


DEEP SPACE 38999

AMPHENOL'S COLDEST ENVIRONMENTAL CONNECTOR SERIES

PDS - 341



DEEP SPACE 38999 (-319 °F/-195°C):

The Deep Space 38999 connector series is designed for extreme cold-weather environments. They are built to retain a grommet-to-wire and contact-to-contact seal in temperatures below -85 °F (-65 °C).

Temperatures falling below -85 °F (-65 °C) typically means losing your environmental sealing or worse: electrical shortening due to cracked elastomeric components. The Deep Space 38999 connector ensures your seal and connectivity remain fully intact.

Using modification code (750) on a 38999 commercial coded part number upgrades the elastomers to our -319 °F (-195 °C) capable silicone blend and includes other necessary upgrades to components and materials.

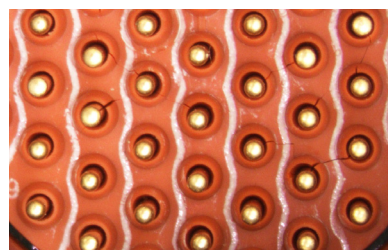
Example Part Number: TVPS00RF-25-35P(750)*

*Contact Amphenol for details, not all connector styles are -319 °F (-195 °C) capable with Deep Space 38999 rubber due to other component limitations.

*Use mod code (750S) for outgassed version

FEATURES/BENEFITS:

- Intermateable and interchangeable with standard connectors
- Retains grommet-to-wire seal and contact isolation
- Rubber will not take a compression set when stretched or compressed due to regular connector operations
- Static testing over 100 hours reveals no cracking where all other benchmark parts crack and foil
- Tooled in most insert arrangements
- Available in 38999 Series I, Series II, Series III and SJT
- Compatible with standard 38999 caps and accessories
- See Amphenol for availability in other connector series



Standard D38999 cracked seal

BUILD A PART NUMBER:

Complete steps 1-7 to create your part number

1. Connector Type	2. Shell Style	3. Service Class	4. Shell Size - Insert Arrangement	5. Contact Type	6. Alternate Position	7. Modification
TV	96	DT	15-35	P		(750)


STEP 1 : Choose a Connector Type






1. Connector Type	
TV	Tri-Start, Series III, 175° C
TVP	Tri-Start, Series III, Panel Mount 175° C
TVS	Tri-Start, Series III, 200° C
TVPS	Tri-Start, Series III, Panel Mount 200° C

STEP 2 : Choose Shell Style

2. Shell Style	
00	Wall Mount Receptacle
80	Wall Mount with Integral Banding Platform
07	Jam Nut Receptacle
87	Jam Nut with Integral band platform
06	Straight Plug
96	Plug with Integral Banding Platform
02	Box Mount

STEP 3 : Choose a Service Class

175°C Service Class	
DT	Duralon: 500 hrs. salt spray,-50dB@10GHz 

200°C Service Class	
RB	Marine Bronze - 500 hour salt spray 
RF	Electroless nickel plated aluminum, 48 hour salt spray 
DS	AP-93 alloy 
RK	Passivated Stainless Steel (Firewall): 500 hrs. salt, -65dB@10GHz 
RS	Nickel Plated Stainless Steel, Passivated (Firewall): 500 hrs. salt, -65dB@10GHz 

STEP 4: Select a Shell Size & Insert Arrangement

4. Shell Size - Insert Arrangement
See Amphenol 38999 Catalog page 2-13

STEP 5 : Choose a Contact Type

5. Contact Type	
P	Pin
S	Socket

STEP 6 : Choose an Alternate Position

6. Alternate Positions	
	Blank for normal rotation
A	A rotation
B	B rotation
C	C rotation
D	D rotation
E	E rotation

STEP 7 : Choose a Modification Code

7. Modification Code	
(750)	Deep Space 38999
(750S)	Deep Space with outgassing
(750P)	Deep Space, replace Twinax/Coax with power contacts
(750PS)	Deep Space, with outgassing, replace Twinax/Coax with power contacts
(750H)	Deep Space, replace contacts with high current pins
(750HS)	Deep Space, with outgassing, replace contacts with high current pins