

# Dura|Mate™



Circular Plastic Connectors for Heavy Duty Applications

## Circular Plastic Connectors for Heavy Duty Applications

Available in Size 24 with 7, 19, 21, 23, 27, 29, 31 and 47 Insert Arrangements  
Available in Size 18 with 14 Insert Arrangement

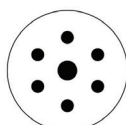
The Amphenol Dura | Mate™ environmentally sealed multi-pin thermoplastic circular connector series provides an economical quick-connect bayonet locking system manufactured to withstand the challenges and complexities of harsh environment off-road applications.



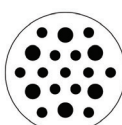
While maintaining compatibility with existing shell size 24 industry standard designs, ease of use was exceeded through enhanced ergonomics using an easy grip coupling system and visual and tactile indicators ensuring reliable mating confirmation. Wire management improvements include two different back shell systems that thread onto the rear of the connectors to provide strain relief and additional wire seal protection. The low cost, tie wrap option and the fully enclosed back shell are interchangeable for specific application requirements. Its rugged high performance capability is ideal for panel mount or in-line heavy-duty applications such as commercial vehicle, agriculture, construction or marine installations.



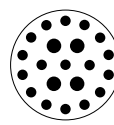
**18-14**  
14 Size 16



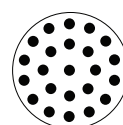
**24-7**  
6 Size 12  
1 Size 8 **RADSOK®**



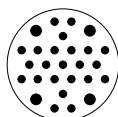
**24-19**  
6 Size 12  
13 Size 16



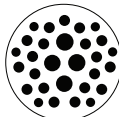
**24-21**  
4 Size 12  
17 Size 16



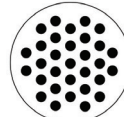
**24-23**  
23 Size 16



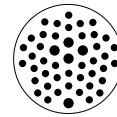
**24-27**  
4 Size 12  
23 Size 16



**24-29**  
4 Size 12  
19 Size 16  
6 Size 20



**24-31**  
31 Size 16



**24-47**  
42 Size 20  
5 Size 16



## Features and Benefits

- Polarized for proper mating of connector halves
- High density signal and mixed power insert configurations
- Available in Size 24 with 8 insert arrangements (7, 19, 21, 23, 27, 29, 31)  
Available in Size 18 with 1 insert arrangement (14)
- Operating temperature range: -55°C to +125°C
- High current configurations incorporating revolutionary **RADSOK®** contacts
- High strength impact resistant & lightweight thermoplastic housings
- Contacts available in economical reel-mounted high volume machine termination or in machined loose-piece form.
- Low insertion force stamped terminals offer improved manufacturing efficiencies
- Wire entry sealing available in three separate ranges for discrete wire applications:

Recommended Wire Insulation Overall Diameter (OD)			
Contact Size	Normal Seal	Thin Seal	Reduced Seal
20	N/A	N/A	1.02mm (.040") - 2.41mm (.095")
16	2.54mm (.100") - 3.40mm (.134")	2.23mm (.088") - 3.40mm (.134")	1.35mm (.053") - 3.05mm (.120")
12	3.43mm (.135") - 4.32mm (.170")	N/A	2.46mm (.097") - 4.01mm (.158")
8	4.83mm (.190") - 6.10mm (.240")	N/A	N/A

- Standard WTA (Wide Thread Adapter) provides maximum access to rear grommet and improved serviceability.
- Engineered rapid and secure mating system achieves IP67 protection from ingress of dust, water mud and other contaminants
- Redundant sealing features consisting of durable high temperature silicone provide barrier from lubricating oils, hydraulic fluids and fossil fuels.
- Rigid back shells maintain a compression-fit design to resist maximum pull-out forces and facilitate strain-relief for jacketed cable ranges.

### Performance Specifications

Current Rating per Contact	Size 8, 80A; Size 12, 25A; Size 16, 13A; Size 20, 7.5A
Operating Temperature	-55°C to +125°C
Dielectric Withstanding Voltage	Current Leakage - 12 milliamp at 1500 VAC
Degree of Protection	IP67
Mating Cycle Durability	100 Cycles
RoHS	Compliant

### Shell Specifications

Coupling Nut	Thermoplastic
Insulation Insert	Thermoplastic
Seal	Silicone Rubber
Color	Black
Contact	Common System

## Features and Benefits (con't)

- Utilizes industry standard contact system
- Environmentally-sealed to IP67 and vibration resistant
- Wide threaded collar ring for increased serviceability and connector access (1)
- Highly visible indicators for quick alignment and 100% positive mating (2)
- Enclosed 1-piece threaded backshell with low-cost strain relief (3)
- Optional 2-piece threaded backshell with compression nut (4)
- Contact removal tools (5)
- **RADSOK®** contacts (6)
- Panel Nut (7)



# 7 POSITION PLUGS & RECEPTACLES

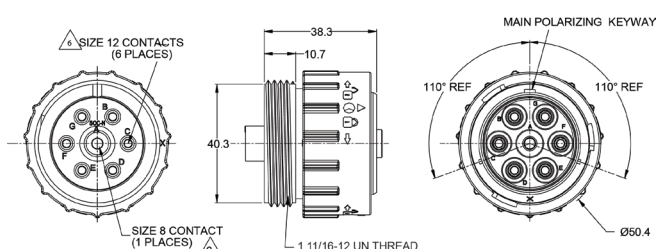


**DURA|MATE**  
7 POSITIONS  
25A,80A

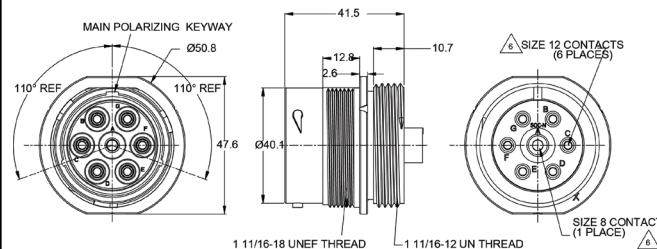
Contact Size	12	8
Contact Qty	6	1 RADSOK®
Seal OD Range NORMAL SEAL	3.43mm (.135") - 4.32mm (.170")	4.83mm (.190") - 6.10mm (.240")
Wire Range	10-14 AWG	7-10 AWG
Amperage	25	80



## PLUG



## RECEPTACLE



Standard and reverse terminal genders allows for custom polarization

Part Number	Gender: Standard
<b>AHDP06-24-07SN-WTA</b>	Contact: Socket

Rear Seal Type: NORMAL, Green

Description: Size 24 Plug with 7 positions, Socket, standard arrangement, normal seal, wide thread adapter

Mating Part(s): AHDP04-24-07PN-WTA

See Receptacle column on this page for more details

Part Number	Gender: Standard
<b>AHDP04-24-07PN-WTA</b>	Contact: Pin

Rear Seal Type: NORMAL, Green

Description: Size 24 Receptacle with 7 positions, Pin, standard arrangement, normal seal, wide thread adapter

Mating Part(s): AHDP06-24-07SN-WTA

See Plug column on this page for more details

Part Number	Gender: Reversed
<b>AHDP06-24-07PN-WTA</b>	Contact: Pin

Rear Seal Type: NORMAL, Green

Description: Size 24 Plug with 7 positions, Pin, reverse arrangement, normal seal, wide thread adapter

Mating Part(s): AHDP04-24-07SN-WTA

See Receptacle column on this page for more details

Part Number	Gender: Reversed
<b>AHDP04-24-07SN-WTA</b>	Contact: Socket

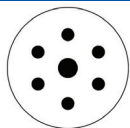
Rear Seal Type: NORMAL, Green

Description: Size 24 Receptacle with 7 positions, Socket, reverse arrangement, normal seal, wide thread adapter

Mating Part(s): AHDP06-24-07PN-WTA

See Plug column on this page for more details

For custom insert configurations, please call 1 800 394 7732

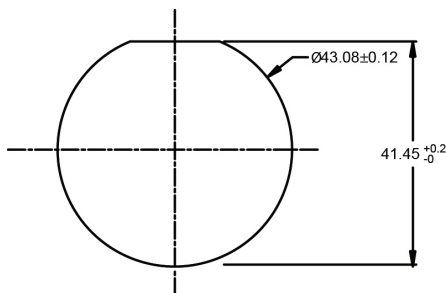


## 7 POSITION PLUGS & RECEPTACLES - CONTACTS

Shell Size  
**24**

Contact Size	Part No.	Type	(Pin/Socket)	Wire Range (AWG)	AMP	Plating
8	SC000345	Machined <b>Radsok</b> ®	Pin	7-10	80	Silver
8	SC000346	Machined <b>Radsok</b> ®	Socket	7-10	80	Silver
8	SC000345-141	Machined	Pin	8-10	60	Nickel
8	SC000379	Machined	Socket	8-10	60	Nickel
12	AT60-204-12141	Machined	Pin	12-14	25	Nickel
12	AT60-220-1231	Machined	Pin	12-14	25	Gold
12	AT62-203-12141	Machined	Socket	12-14	25	Nickel
12	AT62-210-1231	Machined	Socket	12-14	25	Gold
12	AT60-12-0166	Stamped & Formed	Pin	12-14	25	Nickel
12	AT60-12-0144	Stamped & Formed	Pin	12-14	25	Gold
12	AT62-12-0166	Stamped & Formed	Socket	12-14	25	Nickel
12	AT62-12-0144	Stamped & Formed	Socket	12-14	25	Gold
12	AT60-12-0222	Stamped & Formed	Pin	10-12	25	Nickel
12	AT60-12-0244	Stamped & Formed	Pin	10-12	25	Gold
12	AT62-12-0222	Stamped & Formed	Socket	10-12	25	Nickel
12	AT62-12-0244	Stamped & Formed	Socket	10-12	25	Gold

Recommended Panel Mounting Hole  
Recommended panel thickness: 1.6 to 4.7mm



**Part Number**  
**AHDP24-PN01**

Panel Nut, Shell Size 24



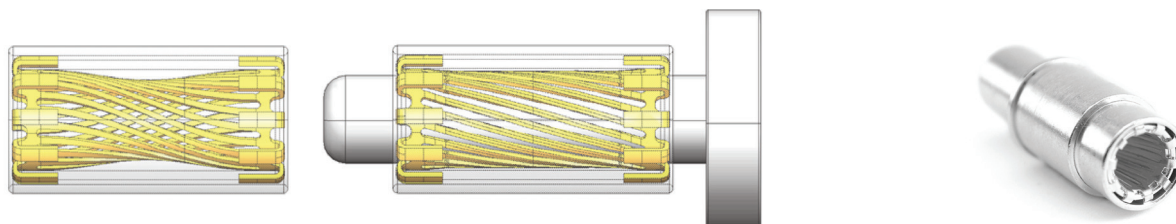
**Part Number**  
**AT14-001-2486**

Metal Lock Washer  
Shell Size 24



For custom insert configurations, please call 1 800 394 7732

## RADSOK® Contacts



### The RADSOK® Design

- Socket cylinder within female contact has several equally spaced longitudinal beams twisted into a hyperbolic shape
- As a male pin is inserted, axial members in the female half deflect, imparting high current flow across the connection with minimal voltage loss
- The hyperbolic, stamped grid configuration ensures a large, coaxial, face-to-face surface area engagement
- Ideal for crimp termination applications requiring repeated mating cycles and high current with a low multi-volt drop

## RADSOK® Technical Data

### High Reliability

Unique **RADSOK®** design and construction technology creates an electrical contact interface that exceeds typical interconnect requirements. Applications in Aerospace, Medical, Industrial, Automotive, Mining, Offshore and other harsh environments depend on the high reliability of Amphenol **RADSOK®** technology.

### Low Contact Engagement/Separation Forces

The hyperbolic lamella socket contact construction distributes normal forces over a high percentage of the mating surface. This creates a smooth, even engagement effort. This force distribution also contributes to excellent performance in vibration applications with resistance to typical fretting corrosion.

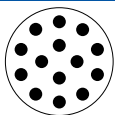
### Low Contact Resistance

The large interface between the socket lamella and pin surface result in very low contact resistance, enabling the **RADSOK®** contacts high current ratings compared to traditional power contact designs.

### High Mating Cycle Durability

**RADSOK®** contacts with typical silver plating finishes have demonstrated survival of 10,000 mating cycles. Even with continuous exposure to harsh environmental abuse (salt, sand and high humidity), **RADSOK®** contacts have been tested to maintain low contact resistance beyond 10,000 mating cycles.





## 14 POSITION PLUGS & RECEPTACLES

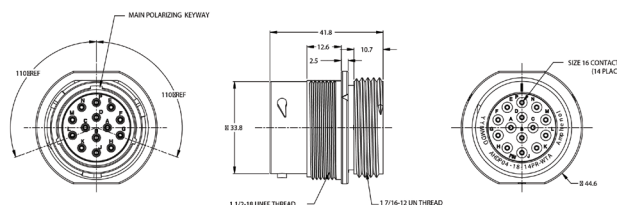
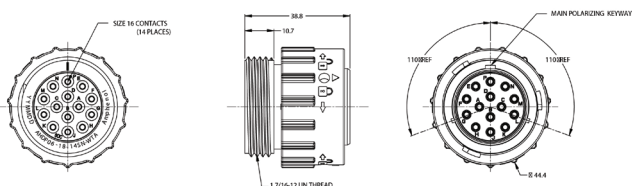
Shell Size  
**18**

Contact Size	<b>16</b>
Contact Qty	14
Seal OD Range	
<b>NORMAL SEAL</b>	2.54mm (.100") - 3.40mm (.134")
<b>REDUCED SEAL</b>	1.35mm (.053") - 3.05mm (.120")
Wire Range	14-20 AWG
Amperage	13



### PLUG

### RECEPTACLE



*Standard and reverse terminal genders allows for custom polarization*

<b>Part Number</b> <b>AHDP06-18-14SN-WTA</b>	<b>Gender: Standard</b> <b>Contact: Socket</b>
---	---

**Rear Seal Type: NORMAL, Green**

Description: Size 18 Plug with 14 positions, Socket, standard arrangement, normal seal, wide thread adapter

Mating Part(s): AHDP04-18-14PN-WTA,  
AHDP04-18-PR-WTA

See Receptacle column on this page for more details

<b>Part Number</b> <b>AHDP06-18-14SR-WTA</b>	<b>Gender: Standard</b> <b>Contact: Socket</b>
---	---

**Rear Seal Type: REDUCED SEAL, Blue**

Description: Size 18 Plug with 14 positions, Socket, standard arrangement, reduced seal, wide thread adapter

Mating Part(s): AHDP04-18-14PN-WTA,  
AHDP04-18-14PR-WTA

See Receptacle column on this page for more details

<b>Part Number</b> <b>AHDP04-18-14PN-WTA</b>	<b>Gender: Standard</b> <b>Contact: Pin</b>
---	--

**Rear Seal Type: NORMAL, Green**

Description: Size 18 Receptacle with 14 positions, Pin, standard arrangement, normal seal, wide thread adapter

Mating Part(s): AHDP06-18-14SN-WTA,  
AHDP06-18-14SR-WTA

See Plug column on this page for more details

<b>Part Number</b> <b>AHDP04-18-14PR-WTA</b>	<b>Gender: Standard</b> <b>Contact: Pin</b>
---	--

**Rear Seal Type: REDUCED SEAL, Blue**

Description: Size 18 Receptacle with 14 positions, Pin, standard arrangement, reduced seal, wide thread adapter

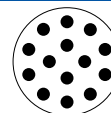
Mating Part(s): AHDP06-18-14SN-WTA,  
AHDP06-18-14SR-WTA

See Plug column on this page for more details

For custom insert configurations, please call 1 800 394 7732



# 14 POSITION PLUGS & RECEPTACLES



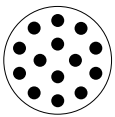
**DURA|MATE**  
14 POSITIONS  
13A

Shell Size  
**18**

CONNECTOR SOLUTIONS

PLUG		RECEPTACLE	
Part Number <b>AHDP06-18-14PN-WTA</b>	Gender: Reversed Contact: Pin	Part Number <b>AHDP04-18-14SN-WTA</b>	Gender: Reversed Contact: Socket
Rear Seal Type: NORMAL, Green		Rear Seal Type: NORMAL, Green	
Description: Size 18 Plug with 14 positions, Pin, reversed arrangement, normal seal, wide thread adapter		Description: Size 18 Receptacle with 14 positions, Socket, standard arrangement, normal seal, wide thread adapter	
Mating Part(s): AHDP04-18-14SN-WTA, AHDP04-18-14SR-WTA		Mating Part(s): AHDP06-18-14PN-WTA, AHDP06-18-14PR-WTA	
See Receptacle column on this page for more details		See Plug column on this page for more details	
Part Number <b>AHDP06-18-14PR-WTA</b>	Gender: Reversed Contact: Pin	Part Number <b>AHDP04-18-14SR-WTA</b>	Gender: Reversed Contact: Socket
Rear Seal Type: REDUCED SEAL, Blue		Rear Seal Type: REDUCED SEAL, Blue	
Description: Size 18 Plug with 14 positions, Pin, reversed arrangement, reduced seal, wide thread adapter		Description: Size 18 Receptacle with 14 positions, Socket, reversed arrangement, reduced seal, wide thread adapter	
Mating Part(s): AHDP04-18-14SN-WTA, AHDP04-18-14SR-WTA		Mating Part(s): AHDP06-18-14PN-WTA, AHDP06-18-14PR-WTA	
See Receptacle column on this page for more details		See Plug column on this page for more details	

Contact Size	Part No.	Type	(Pin/Socket)	Wire Range (AWG)	AMP	Plating
16	AT60-215-1631	Machined	Pin	14	13	Gold
16	AT60-215-16141	Machined	Pin	14	13	Nickel
16	AT62-209-1631	Machined	Socket	14	13	Gold
16	AT62-209-16141	Machined	Socket	14	13	Nickel
16	AT60-202-1631	Machined	Pin	16-20	13	Gold
16	AT60-202-16141	Machined	Pin	16-20	13	Nickel
16	AT62-201-1631	Machined	Socket	16-20	13	Gold
16	AT62-201-16141	Machined	Socket	16-20	13	Nickel
16	AT60-14-0144	Stamped & Formed	Pin	14-16	13	Gold
16	AT60-14-0122	Stamped & Formed	Pin	14-16	13	Nickel
16	AT62-14-0144	Stamped & Formed	Socket	14-16	13	Gold
16	AT62-14-0122	Stamped & Formed	Socket	14-16	13	Nickel

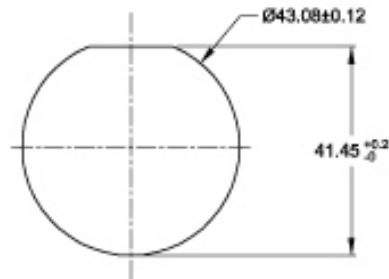


## 14 POSITION PLUGS & RECEPTACLES- CONTACTS (con't)

Shell Size  
**18**

Contact Size	Part No.	Type	(Pin/Socket)	Wire Range (AWG)	AMP	Plating
16	AT60-16-0144	Stamped & Formed	Pin	16-18	13	Gold
16	AT60-16-0122	Stamped & Formed	Pin	16-18	13	Nickel
16	AT62-16-0144	Stamped & Formed	Socket	16-18	13	Gold
16	AT62-16-0122	Stamped & Formed	Socket	16-18	13	Nickel
16	AT60-16-0644	Stamped & Formed	Pin	18-20	13	Gold
16	AT60-16-0622	Stamped & Formed	Pin	18-20	13	Nickel
16	AT62-16-0644	Stamped & Formed	Socket	18-20	13	Gold
16	AT62-16-0622	Stamped & Formed	Socket	18-20	13	Nickel

Recommended Panel Mounting Hole  
Recommended panel thickness:



**Part Number**  
**AHDP18-PN01**

Panel Nut, Shell Size 18

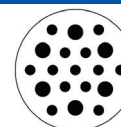


**Part Number**  
**AT14-002-1886**

Metal Lock Washer  
Shell Size 18



# 19 POSITION PLUGS & RECEPTACLES



**DURA|MATE**  
19 POSITIONS  
25A, 13A

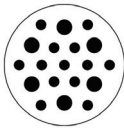
Shell Size  
**24**

Contact Size	<b>12</b>	<b>16</b>
Contact Qty	6	13
Seal OD Range		
NORMAL SEAL	3.43mm (.135")-4.32mm (.170")	2.54mm (.100")-3.40mm (.134")
REDUCED SEAL	2.46mm (.097")-4.01mm (.158")	1.35mm (.053")-3.05mm (.120")
Wire Range	10-14 AWG	14-20 AWG
Amperage	25	13



PLUG	RECEPTACLE																				
<p>SIZE 16 CONTACTS (13 PLACES)</p> <p>SIZE 12 CONTACT (6 PLACES)</p> <p>38.3</p> <p>49.9</p> <p>1 11/16-12 UN THREAD</p> <p>MAIN POLARIZING KEYWAY</p> <p>110° REF</p> <p>110° REF</p> <p>Ø48.4</p>	<p>MAIN POLARIZING KEYWAY</p> <p>Ø50.8</p> <p>110° REF</p> <p>110° REF</p> <p>47.6</p> <p>41.5</p> <p>12.9</p> <p>2.6</p> <p>10.7</p> <p>Ø40.1</p> <p>1 11/16-18 UNEF THREAD</p> <p>1 11/16-12 UN THREAD</p> <p>SIZE 16 CONTACT (13 PLACES)</p> <p>SIZE 12 CONTACTS (6 PLACES)</p>																				
Standard and reverse terminal genders allows for custom polarization																					
<table border="1"> <tr> <td><b>Part Number</b> <b>AHDP06-24-19SN-WTA</b></td><td>Gender: Standard Contact: Socket</td></tr> <tr> <td colspan="2">Rear Seal Type: NORMAL, Green</td></tr> <tr> <td colspan="2">Description: Size 24 Plug with 19 positions, Socket, standard arrangement, normal seal, wide thread adapter</td></tr> <tr> <td colspan="2">Mating Part(s): AHDP04-24-19PN-WTA, AHDP04-24-19PR-WTA</td></tr> <tr> <td colspan="2">See Receptacle column on this page for more details</td></tr> </table>	<b>Part Number</b> <b>AHDP06-24-19SN-WTA</b>	Gender: Standard Contact: Socket	Rear Seal Type: NORMAL, Green		Description: Size 24 Plug with 19 positions, Socket, standard arrangement, normal seal, wide thread adapter		Mating Part(s): AHDP04-24-19PN-WTA, AHDP04-24-19PR-WTA		See Receptacle column on this page for more details		<table border="1"> <tr> <td><b>Part Number</b> <b>AHDP04-24-19PN-WTA</b></td><td>Gender: Standard Contact: Pin</td></tr> <tr> <td colspan="2">Rear Seal Type: NORMAL, Green</td></tr> <tr> <td colspan="2">Description: Size 24 Receptacle with 19 positions, Pin, standard arrangement, normal seal, wide thread adapter</td></tr> <tr> <td colspan="2">Mating Part(s): AHDP06-24-19SN-WTA, AHDP06-24-19SR-WTA</td></tr> <tr> <td colspan="2">See Plug column on this page for more details</td></tr> </table>	<b>Part Number</b> <b>AHDP04-24-19PN-WTA</b>	Gender: Standard Contact: Pin	Rear Seal Type: NORMAL, Green		Description: Size 24 Receptacle with 19 positions, Pin, standard arrangement, normal seal, wide thread adapter		Mating Part(s): AHDP06-24-19SN-WTA, AHDP06-24-19SR-WTA		See Plug column on this page for more details	
<b>Part Number</b> <b>AHDP06-24-19SN-WTA</b>	Gender: Standard Contact: Socket																				
Rear Seal Type: NORMAL, Green																					
Description: Size 24 Plug with 19 positions, Socket, standard arrangement, normal seal, wide thread adapter																					
Mating Part(s): AHDP04-24-19PN-WTA, AHDP04-24-19PR-WTA																					
See Receptacle column on this page for more details																					
<b>Part Number</b> <b>AHDP04-24-19PN-WTA</b>	Gender: Standard Contact: Pin																				
Rear Seal Type: NORMAL, Green																					
Description: Size 24 Receptacle with 19 positions, Pin, standard arrangement, normal seal, wide thread adapter																					
Mating Part(s): AHDP06-24-19SN-WTA, AHDP06-24-19SR-WTA																					
See Plug column on this page for more details																					
<table border="1"> <tr> <td><b>Part Number</b> <b>AHDP06-24-19SR-WTA</b></td><td>Gender: Standard Contact: Socket</td></tr> <tr> <td colspan="2">Rear Seal Type: REDUCED SEAL, Blue</td></tr> <tr> <td colspan="2">Description: Size 24 Plug with 19 positions, Socket, standard arrangement, RD01 reduced diameter seal, wide thread adapter</td></tr> <tr> <td colspan="2">Mating Part(s): AHDP04-24-19PN-WTA, AHDP04-24-19PR-WTA</td></tr> <tr> <td colspan="2">See Receptacle column on this page for more details</td></tr> </table>	<b>Part Number</b> <b>AHDP06-24-19SR-WTA</b>	Gender: Standard Contact: Socket	Rear Seal Type: REDUCED SEAL, Blue		Description: Size 24 Plug with 19 positions, Socket, standard arrangement, RD01 reduced diameter seal, wide thread adapter		Mating Part(s): AHDP04-24-19PN-WTA, AHDP04-24-19PR-WTA		See Receptacle column on this page for more details		<table border="1"> <tr> <td><b>Part Number</b> <b>AHDP04-24-19PR-WTA</b></td><td>Gender: Standard Contact: Pin</td></tr> <tr> <td colspan="2">Rear Seal Type: REDUCED SEAL, Blue</td></tr> <tr> <td colspan="2">Description: Size 24 Receptacle with 19 positions, Pin, standard arrangement, RD01 reduced diameter, wide thread adapter</td></tr> <tr> <td colspan="2">Mating Part(s): AHDP06-24-19SN-WTA, AHDP06-24-19SR-WTA</td></tr> <tr> <td colspan="2">See Plug column on this page for more details</td></tr> </table>	<b>Part Number</b> <b>AHDP04-24-19PR-WTA</b>	Gender: Standard Contact: Pin	Rear Seal Type: REDUCED SEAL, Blue		Description: Size 24 Receptacle with 19 positions, Pin, standard arrangement, RD01 reduced diameter, wide thread adapter		Mating Part(s): AHDP06-24-19SN-WTA, AHDP06-24-19SR-WTA		See Plug column on this page for more details	
<b>Part Number</b> <b>AHDP06-24-19SR-WTA</b>	Gender: Standard Contact: Socket																				
Rear Seal Type: REDUCED SEAL, Blue																					
Description: Size 24 Plug with 19 positions, Socket, standard arrangement, RD01 reduced diameter seal, wide thread adapter																					
Mating Part(s): AHDP04-24-19PN-WTA, AHDP04-24-19PR-WTA																					
See Receptacle column on this page for more details																					
<b>Part Number</b> <b>AHDP04-24-19PR-WTA</b>	Gender: Standard Contact: Pin																				
Rear Seal Type: REDUCED SEAL, Blue																					
Description: Size 24 Receptacle with 19 positions, Pin, standard arrangement, RD01 reduced diameter, wide thread adapter																					
Mating Part(s): AHDP06-24-19SN-WTA, AHDP06-24-19SR-WTA																					
See Plug column on this page for more details																					

For custom insert configurations, please call 1 800 394 7732



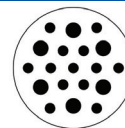
## 19 POSITION PLUGS & RECEPTACLES - CONTACTS

Shell Size  
**24**

PLUG		RECEPTACLE	
Part Number <b>AHDP06-24-19PN-WTA</b>	Gender: Reversed Contact: Pin	Part Number <b>AHDP04-24-19SN-WTA</b>	Gender: Reversed Contact: Socket
Rear Seal Type: NORMAL, Green		Rear Seal Type: NORMAL, Green	
Description: Size 24 Plug with 19 positions, Pin, reverse arrangement, normal seal, wide thread adapter		Description: Size 24 Receptacle with 19 positions, Socket, reverse arrangement, normal seal, wide thread adapter	
Mating Part(s): AHDP04-24-19SN-WTA, AHDP04-24-19SR-WTA		Mating Part(s): AHDP06-24-19PN-WTA, AHDP06-24-19PR-WTA	
See Receptacle column on this page for more details		See Plug column on this page for more details	
Part Number <b>AHDP06-24-19PR-WTA</b>	Gender: Reversed Contact: Pin	Part Number <b>AHDP04-24-19SR-WTA</b>	Gender: Reversed Contact: Socket
Rear Seal Type: REDUCED SEAL, Blue		Rear Seal Type: REDUCED SEAL, Blue	
Description: Size 24 Plug with 19 positions, Pin, reverse arrangement, RD01 reduced diameter seal, wide thread adapter		Description: Size 24 Receptacle with 19 positions, Socket, reverse arrangement, RD01 reduced diameter, wide thread adapter	
Mating Part(s): AHDP04-24-19SN-WTA, AHDP04-24-19SR-WTA		Mating Part(s): AHDP06-24-19PN-WTA, AHDP06-24-19PR-WTA	
See Receptacle column on this page for more details		See Plug column on this page for more details	

## 19 Position Plugs & Receptacles- Contacts

Contact Size	Part No.	Type	(Pin/Socket)	Wire Range (AWG)	AMP	Plating
12	AT60-220-1231	Machined	Pin	12-14	25	Gold
12	AT60-204-12141	Machined	Pin	12-14	25	Nickel
12	AT62-210-1231	Machined	Socket	12-14	25	Gold
12	AT62-203-12141	Machined	Socket	12-14	25	Nickel
12	AT60-12-0244	Stamped & Formed	Pin	10-12	25	Gold
12	AT60-12-0222	Stamped & Formed	Pin	10-12	25	Nickel
12	AT62-12-0244	Stamped & Formed	Socket	10-12	25	Gold
12	AT62-12-0222	Stamped & Formed	Socket	10-12	25	Nickel
12	AT60-12-0144	Stamped & Formed	Pin	12-14	25	Gold
12	AT60-12-0166	Stamped & Formed	Pin	12-14	25	Nickel
12	AT62-12-0144	Stamped & Formed	Socket	12-14	25	Gold
12	AT62-12-0166	Stamped & Formed	Socket	12-14	25	Nickel


 Shell Size  
**24**

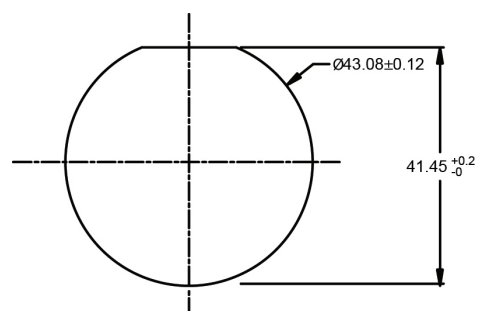
Contact Size	Part No.	Type	(Pin/Socket)	Wire Range (AWG)	AMP	Plating
16	AT60-215-1631	Machined	Pin	14	13	Gold
16	AT60-215-16141	Machined	Pin	14	13	Nickel
16	AT62-209-1631	Machined	Socket	14	13	Gold
16	AT62-209-16141	Machined	Socket	14	13	Nickel
16	AT60-202-1631	Machined	Pin	16-20	13	Gold
16	AT60-202-16141	Machined	Pin	16-20	13	Nickel
16	AT62-201-1631	Machined	Socket	16-20	13	Gold
16	AT62-201-16141	Machined	Socket	16-20	13	Nickel
16	AT60-14-0144	Stamped & Formed	Pin	14-16	13	Gold
16	AT60-14-0122	Stamped & Formed	Pin	14-16	13	Nickel
16	AT62-14-0144	Stamped & Formed	Socket	14-16	13	Gold
16	AT62-14-0122	Stamped & Formed	Socket	14-16	13	Nickel
16	AT60-16-0144	Stamped & Formed	Pin	16-18	13	Gold
16	AT60-16-0122	Stamped & Formed	Pin	16-18	13	Nickel
16	AT62-16-0144	Stamped & Formed	Socket	16-18	13	Gold
16	AT62-16-0122	Stamped & Formed	Socket	16-18	13	Nickel
16	AT60-16-0644	Stamped & Formed	Pin	18-20	13	Gold
16	AT60-16-0622	Stamped & Formed	Pin	18-20	13	Nickel
16	AT62-16-0644	Stamped & Formed	Socket	18-20	13	Gold
16	AT62-16-0622	Stamped & Formed	Socket	18-20	13	Nickel

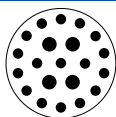
**Part Number**  
**AHDP24-PN01**

Panel Nut, Shell Size 24


**Part Number**  
**AT14-001-2486**

 Metal Lock Washer  
 Shell Size 24

 Recommended Panel Mounting Hole  
 Recommended panel thickness: 1.6 to 4.7mm




## 21 POSITION PLUGS & RECEPTACLES

Shell Size  
**24**

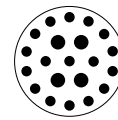
Contact Size	<b>12</b>	<b>16</b>
Contact Qty	4	17
Seal OD Range		
NORMAL SEAL	3.43mm (.135")-4.32mm (.170")	2.54mm (.100")-3.40mm (.134")
REDUCED SEAL	2.46mm (.097")-4.01mm (.158")	1.35mm (.053")-3.05mm (.120")
Wire Range	10-14 AWG	14-20 AWG
Amperage	25	13



PLUG	RECEPTACLE																				
Standard and reverse terminal genders allows for custom polarization																					
<table border="1"> <tr> <td><b>Part Number</b> <b>AHDP06-24-21SN-WTA</b></td><td>Gender: Standard Contact: Socket</td></tr> <tr> <td colspan="2">Rear Seal Type: NORMAL, Green</td></tr> <tr> <td colspan="2">Description: Size 24 Plug with 21 positions, Socket, standard arrangement, normal seal, wide thread adapter</td></tr> <tr> <td colspan="2">Mating Part(s): AHDP04-24-21PN-WTA, AHDP04-24-19PR-WTA</td></tr> <tr> <td colspan="2">See Receptacle column on this page for more details</td></tr> </table>	<b>Part Number</b> <b>AHDP06-24-21SN-WTA</b>	Gender: Standard Contact: Socket	Rear Seal Type: NORMAL, Green		Description: Size 24 Plug with 21 positions, Socket, standard arrangement, normal seal, wide thread adapter		Mating Part(s): AHDP04-24-21PN-WTA, AHDP04-24-19PR-WTA		See Receptacle column on this page for more details		<table border="1"> <tr> <td><b>Part Number</b> <b>AHDP04-24-21PN-WTA</b></td><td>Gender: Standard Contact: Pin</td></tr> <tr> <td colspan="2">Rear Seal Type: NORMAL, Green</td></tr> <tr> <td colspan="2">Description: Size 24 Receptacle with 21 positions, Pin, standard arrangement, normal seal, wide thread adapter</td></tr> <tr> <td colspan="2">Mating Part(s): AHDP06-24-21SN-WTA, AHDP06-24-21SR-WTA</td></tr> <tr> <td colspan="2">See Plug column on this page for more details</td></tr> </table>	<b>Part Number</b> <b>AHDP04-24-21PN-WTA</b>	Gender: Standard Contact: Pin	Rear Seal Type: NORMAL, Green		Description: Size 24 Receptacle with 21 positions, Pin, standard arrangement, normal seal, wide thread adapter		Mating Part(s): AHDP06-24-21SN-WTA, AHDP06-24-21SR-WTA		See Plug column on this page for more details	
<b>Part Number</b> <b>AHDP06-24-21SN-WTA</b>	Gender: Standard Contact: Socket																				
Rear Seal Type: NORMAL, Green																					
Description: Size 24 Plug with 21 positions, Socket, standard arrangement, normal seal, wide thread adapter																					
Mating Part(s): AHDP04-24-21PN-WTA, AHDP04-24-19PR-WTA																					
See Receptacle column on this page for more details																					
<b>Part Number</b> <b>AHDP04-24-21PN-WTA</b>	Gender: Standard Contact: Pin																				
Rear Seal Type: NORMAL, Green																					
Description: Size 24 Receptacle with 21 positions, Pin, standard arrangement, normal seal, wide thread adapter																					
Mating Part(s): AHDP06-24-21SN-WTA, AHDP06-24-21SR-WTA																					
See Plug column on this page for more details																					
<table border="1"> <tr> <td><b>Part Number</b> <b>AHDP06-24-21SR-WTA</b></td><td>Gender: Standard Contact: Socket</td></tr> <tr> <td colspan="2">Rear Seal Type: REDUCED SEAL, Blue</td></tr> <tr> <td colspan="2">Description: Size 24 Plug with 21 positions, Socket, standard arrangement, reduced seal, wide thread adapter</td></tr> <tr> <td colspan="2">Mating Part(s): AHDP04-24-21PN-WTA, AHDP04-24-19PR-WTA</td></tr> <tr> <td colspan="2">See Receptacle column on this page for more details</td></tr> </table>	<b>Part Number</b> <b>AHDP06-24-21SR-WTA</b>	Gender: Standard Contact: Socket	Rear Seal Type: REDUCED SEAL, Blue		Description: Size 24 Plug with 21 positions, Socket, standard arrangement, reduced seal, wide thread adapter		Mating Part(s): AHDP04-24-21PN-WTA, AHDP04-24-19PR-WTA		See Receptacle column on this page for more details		<table border="1"> <tr> <td><b>Part Number</b> <b>AHDP04-24-21PR-WTA</b></td><td>Gender: Standard Contact: Pin</td></tr> <tr> <td colspan="2">Rear Seal Type: REDUCED SEAL, Blue</td></tr> <tr> <td colspan="2">Description: Size 24 Receptacle with 21 positions, Pin, standard arrangement, reduced seal, wide thread adapter</td></tr> <tr> <td colspan="2">Mating Part(s): AHDP06-24-21SN-WTA, AHDP06-24-21SR-WTA</td></tr> <tr> <td colspan="2">See Plug column on this page for more details</td></tr> </table>	<b>Part Number</b> <b>AHDP04-24-21PR-WTA</b>	Gender: Standard Contact: Pin	Rear Seal Type: REDUCED SEAL, Blue		Description: Size 24 Receptacle with 21 positions, Pin, standard arrangement, reduced seal, wide thread adapter		Mating Part(s): AHDP06-24-21SN-WTA, AHDP06-24-21SR-WTA		See Plug column on this page for more details	
<b>Part Number</b> <b>AHDP06-24-21SR-WTA</b>	Gender: Standard Contact: Socket																				
Rear Seal Type: REDUCED SEAL, Blue																					
Description: Size 24 Plug with 21 positions, Socket, standard arrangement, reduced seal, wide thread adapter																					
Mating Part(s): AHDP04-24-21PN-WTA, AHDP04-24-19PR-WTA																					
See Receptacle column on this page for more details																					
<b>Part Number</b> <b>AHDP04-24-21PR-WTA</b>	Gender: Standard Contact: Pin																				
Rear Seal Type: REDUCED SEAL, Blue																					
Description: Size 24 Receptacle with 21 positions, Pin, standard arrangement, reduced seal, wide thread adapter																					
Mating Part(s): AHDP06-24-21SN-WTA, AHDP06-24-21SR-WTA																					
See Plug column on this page for more details																					

For custom insert configurations, please call 1 800 394 7732

# 21 POSITION PLUGS & RECEPTACLES - CONTACTS



**DURA|MATE**  
21 POSITIONS  
25A,13A

Shell Size  
**24**

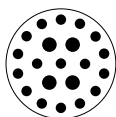
CONNECTOR SOLUTIONS

PLUG		RECEPTACLE	
<b>Part Number</b> <b>AHDP06-24-21PN-WTA</b>	Gender: Reversed Contact: Pin	<b>Part Number</b> <b>AHDP04-24-21SN-WTA</b>	Gender: Reversed Contact: Socket
Rear Seal Type: NORMAL, Green		Rear Seal Type: NORMAL, Green	
Description: Size 24 Plug with 21 positions, Pin, reversed arrangement, normal seal, wide thread adapter		Description: Size 24 Receptacle with 21 positions, Socket, reversed arrangement, normal seal, wide thread adapter	
Mating Part(s): AHDP04-24-21SN-WTA, AHDP04-24-21SR-WTA		Mating Part(s): AHDP06-24-21PN-WTA, AHDP06-24-21PR-WTA	
See Receptacle column on this page for more details		See Plug column on this page for more details	
<b>Part Number</b> <b>AHDP06-24-21PR-WTA</b>	Gender: Reversed Contact: Pin	<b>Part Number</b> <b>AHDP04-24-21SR-WTA</b>	Gender: Reversed Contact: Socket
Rear Seal Type: REDUCED SEAL, Blue		Rear Seal Type: REDUCED SEAL, Blue	
Description: Size 24 Plug with 21 positions, Pin, reversed arrangement, reduced seal, wide thread adapter		Description: Size 24 Receptacle with 21 positions, Socket, reversed arrangement, reduced seal, wide thread adapter	
Mating Part(s): AHDP04-24-21SN-WTA, AHDP04-24-21SR-WTA		Mating Part(s): AHDP06-24-21PN-WTA, AHDP06-24-21PR-WTA	
See Receptacle column on this page for more details		See Plug column on this page for more details	

## 21 Position Plugs & Receptacles- Contacts

Contact Size	Part No.	Type	(Pin/Socket)	Wire Range (AWG)	AMP	Plating
12	AT60-220-1231	Machined	Pin	12-14	25	Gold
12	AT60-204-12141	Machined	Pin	12-14	25	Nickel
12	AT62-210-1231	Machined	Socket	12-14	25	Gold
12	AT62-203-12141	Machined	Socket	12-14	25	Nickel
12	AT60-12-0244	Stamped & Formed	Pin	10-12	25	Gold
12	AT60-12-0222	Stamped & Formed	Pin	10-12	25	Nickel
12	AT62-12-0244	Stamped & Formed	Socket	10-12	25	Gold
12	AT62-12-0222	Stamped & Formed	Socket	10-12	25	Nickel
12	AT60-12-0144	Stamped & Formed	Pin	12-14	25	Gold
12	AT60-12-0166	Stamped & Formed	Pin	12-14	25	Nickel
12	AT62-12-0144	Stamped & Formed	Socket	12-14	25	Gold
12	AT62-12-0166	Stamped & Formed	Socket	12-14	25	Nickel





## 21 POSITION PLUGS & RECEPTACLES- CONTACTS (con't)

Shell Size  
**24**

Contact Size	Part No.	Type	(Pin/Socket)	Wire Range (AWG)	AMP	Plating
16	AT60-215-1631	Machined	Pin	14	13	Gold
16	AT60-215-16141	Machined	Pin	14	13	Nickel
16	AT62-209-1631	Machined	Socket	14	13	Gold
16	AT62-209-16141	Machined	Socket	14	13	Nickel
16	AT60-202-1631	Machined	Pin	16-20	13	Gold
16	AT60-202-16141	Machined	Pin	16-20	13	Nickel
16	AT62-201-1631	Machined	Socket	16-20	13	Gold
16	AT62-201-16141	Machined	Socket	16-20	13	Nickel
16	AT60-14-0144	Stamped & Formed	Pin	14-16	13	Gold
16	AT60-14-0122	Stamped & Formed	Pin	14-16	13	Nickel
16	AT62-14-0144	Stamped & Formed	Socket	14-16	13	Gold
16	AT62-14-0122	Stamped & Formed	Socket	14-16	13	Nickel
16	AT60-16-0144	Stamped & Formed	Pin	16-18	13	Gold
16	AT60-16-0122	Stamped & Formed	Pin	16-18	13	Nickel
16	AT62-16-0144	Stamped & Formed	Socket	16-18	13	Gold
16	AT62-16-0122	Stamped & Formed	Socket	16-18	13	Nickel
16	AT60-16-0644	Stamped & Formed	Pin	18-20	13	Gold
16	AT60-16-0622	Stamped & Formed	Pin	18-20	13	Nickel
16	AT62-16-0644	Stamped & Formed	Socket	18-20	13	Gold
16	AT62-16-0622	Stamped & Formed	Socket	18-20	13	Nickel

**Part Number**  
**AHDP24-PN01**

Panel Nut, Shell Size 24

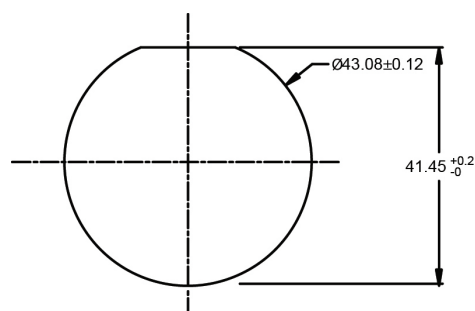


**Part Number**  
**AT14-001-2486**

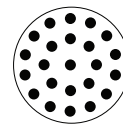
Metal Lock Washer  
Shell Size 24



Recommended Panel Mounting Hole  
Recommended panel thickness: 1.6 to 4.7mm



# 23 POSITION PLUGS & RECEPTACLES



**DURA|MATE**  
23 POSITIONS  
13A

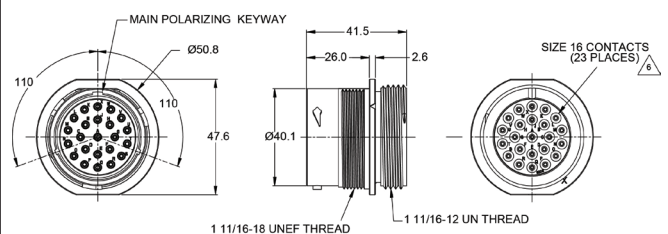
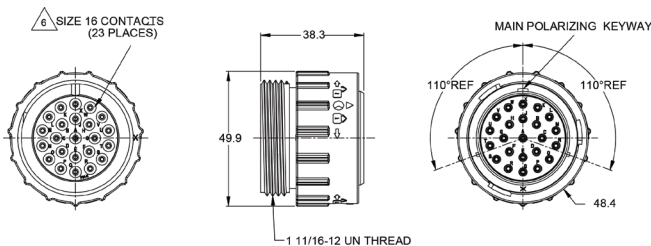
Shell Size  
**24**

Contact Size	16
Contact Qty	23
Seal OD Range	
NORMAL SEAL	2.54mm (.100") - 3.40mm (.134")
REDUCED SEAL	1.35mm (.053") - 3.05mm (.120")
Wire Range	14-20 AWG
Amperage	13



## PLUG

## RECEPTACLE



Standard and reverse terminal genders allows for custom polarization

<b>Part Number</b> <b>AHDP06-24-23SN-WTA</b>	Gender: Standard Contact: Socket
Rear Seal Type: NORMAL SEAL, Blue	
Description: Size 24 Plug with 23 positions, Socket, standard arrangement, normal seal, wide thread adapter	
Mating Part(s): AHDP04-24-23PN-WTA, AHDP04-24-23PR-WTA	
See Receptacle column on this page for more details	

<b>Part Number</b> <b>AHDP04-24-23PN-WTA</b>	Gender: Standard Contact: Pin
Rear Seal Type: NORMAL, Green	
Description: Size 24 Receptacle with 23 positions, Pin, standard arrangement, normal seal, wide thread adapter	
Mating Part(s): AHDP06-24-23SN-WTA, AHDP06-24-23SR-WTA	
See Plug column on this page for more details	

<b>Part Number</b> <b>AHDP06-24-23SR-WTA</b>	Gender: Standard Contact: Socket
Rear Seal Type: REDUCED SEAL, Blue	
Description: Size 24 Plug with 23 positions, Socket, standard arrangement, RD01 reduced diameter seal, wide thread adapter	
Mating Part(s): AHDP04-24-23PN-WTA, AHDP04-24-23PR-WTA	
See Receptacle column on this page for more details	

<b>Part Number</b> <b>AHDP04-24-23PR-WTA</b>	Gender: Standard Contact: Pin
Rear Seal Type: REDUCED SEAL, Blue	
Description: Size 24 Receptacle with 23 positions, Pin, standard arrangement, RD01 reduced diameter seal, wide thread adapter	
Mating Part(s): AHDP06-24-23SN-WTA, AHDP06-24-23SR-WTA	
See Plug column on this page for more details	

For custom insert configurations, please call 1 800 394 7732



## 23 POSITION PLUGS & RECEPTACLES

Shell Size  
**24**

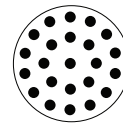
PLUG		RECEPTACLE	
<b>Part Number</b> <b>AHDP06-24-23PN-WTA</b>	Gender: Reversed Contact: Pin	<b>Part Number</b> <b>AHDP04-24-23SN-WTA</b>	Gender: Reversed Contact: Socket
Rear Seal Type: NORMAL, Green		Rear Seal Type: NORMAL, Green	
Description: Size 24 Plug with 23 positions, Pin, reverse arrangement, normal seal, wide thread adapter		Description: Size 24 Receptacle with 23 positions, Socket, reverse arrangement, normal seal, wide thread adapter	
Mating Part(s): AHDP04-24-23SN-WTA, AHDP04-24-23SR-WTA		Mating Part(s): AHDP06-24-23PN-WTA, AHDP06-24-23PR-WTA	
See Receptacle column on this page for more details		See Plug column on this page for more details	
<b>Part Number</b> <b>AHDP06-24-23PR-WTA</b>	Gender: Reversed Contact: Pin	<b>Part Number</b> <b>AHDP04-24-23SR-WTA</b>	Gender: Reversed Contact: Socket
Rear Seal Type: REDUCED SEAL, Blue		Rear Seal Type: REDUCED SEAL, Blue	
Description: Size 24 Plug with 23 positions, Pin, reverse arrangement, RD01 reduced diameter seal, wide thread adapter		Description: Size 24 Receptacle with 23 positions, Socket, reverse arrangement, RD01 reduced diameter seal, wide thread adapter	
Mating Part(s): AHDP04-24-23SN-WTA, AHDP04-24-23SR-WTA		Mating Part(s): AHDP06-24-23PN-WTA, AHDP06-24-23PR-WTA	
See Receptacle column on this page for more details		See Plug column on this page for more details	

## 23 Position Plugs & Receptacles - Contacts

Contact Size	Part No.	Type	(Pin/Socket)	Wire Range (AWG)	AMP	Plating
16	AT60-215-16141	Machined	Pin	14	13	Nickel
16	AT60-215-1631	Machined	Pin	14	13	Gold
16	AT62-209-16141	Machined	Socket	14	13	Nickel
16	AT62-209-1631	Machined	Socket	14	13	Gold
16	AT60-202-16141	Machined	Pin	16-20	13	Nickel
16	AT60-202-1631	Machined	Pin	16-20	13	Gold
16	AT62-201-16141	Machined	Socket	16-20	13	Nickel
16	AT62-201-1631	Machined	Socket	16-20	13	Gold
16	AT60-14-0122	Stamped & Formed	Pin	14-16	13	Nickel
16	AT60-14-0144	Stamped & Formed	Pin	14-16	13	Gold
16	AT62-14-0122	Stamped & Formed	Socket	14-16	13	Nickel
16	AT62-14-0144	Stamped & Formed	Socket	14-16	13	Gold

For custom insert configurations, please consult factory

# 23 POSITION PLUGS & RECEPTACLES - CONTACTS



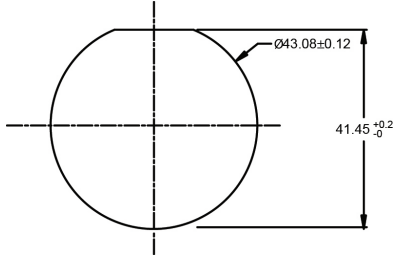
Shell Size  
**24**

**DURA|MATE**  
**23 POSITIONS**  
**13A**

CONNECTOR SOLUTIONS

Contact Size	Part No.	Type	(Pin/Socket)	Wire Range (AWG)	AMP	Plating
16	AT60-16-0122	Stamped & Formed	Pin	16-18	13	Nickel
16	AT60-16-0144	Stamped & Formed	Pin	16-18	13	Gold
16	AT62-16-0122	Stamped & Formed	Socket	16-18	13	Nickel
16	AT62-16-0144	Stamped & Formed	Socket	16-18	13	Gold
16	AT60-16-0622	Stamped & Formed	Pin	18-20	13	Nickel
16	AT60-16-0644	Stamped & Formed	Pin	18-20	13	Gold
16	AT62-16-0622	Stamped & Formed	Socket	18-20	13	Nickel
16	AT62-16-0644	Stamped & Formed	Socket	18-20	13	Gold

Recommended Panel Mounting Hole  
Recommended panel thickness:  
1.6 to 4.7mm



**Part Number**  
**AHDP24-PN01**

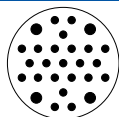
Panel Nut, Shell Size 24



**Part Number**  
**AT14-001-2486**

Metal Lock Washer  
Shell Size 24





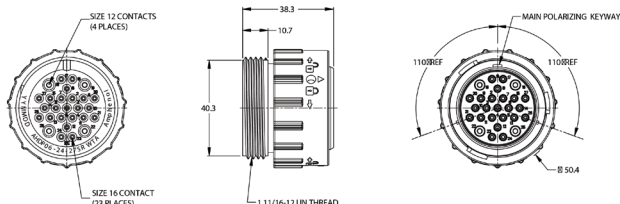
## 27 POSITION PLUGS & RECEPTACLES

Shell Size  
**24**

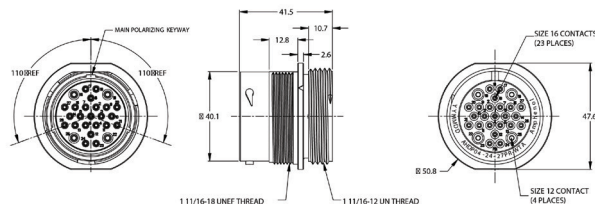
Contact Size	<b>12</b>	<b>16</b>
Contact Qty	4	23
Seal OD Range		
REDUCED SEAL	2.46mm (.097")-4.01mm (.158")	1.35mm (.053")-3.05mm (.120")
Wire Range	10-14 AWG	14-20 AWG
Amperage	25	13



### PLUG



### RECEPTACLE



Standard and reverse terminal genders allows for custom polarization

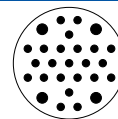
<b>Part Number</b> <b>AHDP06-24-27SR-WTA</b>	<b>Gender: Standard</b> <b>Contact: Socket</b>
<b>Rear Seal Type: REDUCED SEAL, Blue</b>	
Description: Size 24 Plug with 27 positions, Socket, standard arrangement, reduced seal, wide thread adapter	
Mating Part(s): AHDP04-24-27PR-WTA	
See Receptacle column on this page for more details	

<b>Part Number</b> <b>AHDP06-24-27PR-WTA</b>	<b>Gender: Reversed</b> <b>Contact: Pin</b>
<b>Rear Seal Type: REDUCED SEAL, Blue</b>	
Description: Size 24 Plug with 27 positions, Pin, reversed arrangement, reduced seal, wide thread adapter	
Mating Part(s): AHDP04-24-27SR-WTA	
See Receptacle column on this page for more details	

<b>Part Number</b> <b>AHDP04-24-27PR-WTA</b>	<b>Gender: Standard</b> <b>Contact: Pin</b>
<b>Rear Seal Type: REDUCED SEAL, Blue</b>	
Description: Size 24 Receptacle with 27 positions, Pin, standard arrangement, reduced seal, wide thread adapter	
Mating Part(s): AHDP06-24-27SR-WTA	
See Plug column on this page for more details	

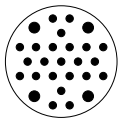
<b>Part Number</b> <b>AHDP04-24-27SR-WTA</b>	<b>Gender: Reversed</b> <b>Contact: Socket</b>
<b>Rear Seal Type: REDUCED SEAL, Blue</b>	
Description: Size 24 Receptacle with 27 positions, Socket, reversed arrangement, reduced seal, wide thread adapter	
Mating Part(s): AHDP06-24-27PR-WTA	
See Plug column on this page for more details	

For custom insert configurations, please call 1 800 394 7732



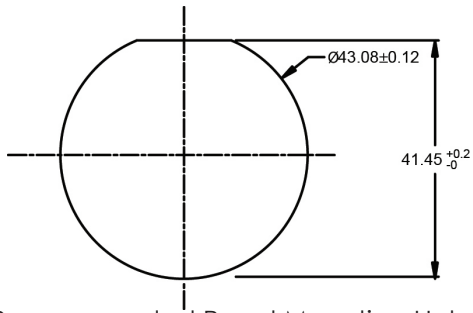
## 27 Position Plugs & Receptacles- Contacts

Contact Size	Part No.	Type	(Pin/Socket)	Wire Range (AWG)	AMP	Plating
12	AT60-220-1231	Machined	Pin	12-14	25	Gold
12	AT60-204-12141	Machined	Pin	12-14	25	Nickel
12	AT62-210-1231	Machined	Socket	12-14	25	Gold
12	AT62-203-12141	Machined	Socket	12-14	25	Nickel
12	AT60-12-0244	Stamped & Formed	Pin	10-12	25	Gold
12	AT60-12-0222	Stamped & Formed	Pin	10-12	25	Nickel
12	AT62-12-0244	Stamped & Formed	Socket	10-12	25	Gold
12	AT62-12-0222	Stamped & Formed	Socket	10-12	25	Nickel
12	AT60-12-0144	Stamped & Formed	Pin	12-14	25	Gold
12	AT60-12-0166	Stamped & Formed	Pin	12-14	25	Nickel
12	AT62-12-0144	Stamped & Formed	Socket	12-14	25	Gold
12	AT62-12-0166	Stamped & Formed	Socket	12-14	25	Nickel
16	AT60-215-1631	Machined	Pin	14	13	Gold
16	AT60-215-16141	Machined	Pin	14	13	Nickel
16	AT62-209-1631	Machined	Socket	14	13	Gold
16	AT62-209-16141	Machined	Socket	14	13	Nickel
16	AT60-202-1631	Machined	Pin	16-20	13	Gold
16	AT60-202-16141	Machined	Pin	16-20	13	Nickel
16	AT62-201-1631	Machined	Socket	16-20	13	Gold
16	AT62-201-16141	Machined	Socket	16-20	13	Nickel
16	AT60-14-0144	Stamped & Formed	Pin	14-16	13	Gold
16	AT60-14-0122	Stamped & Formed	Pin	14-16	13	Nickel
16	AT62-14-0144	Stamped & Formed	Socket	14-16	13	Gold
16	AT62-14-0122	Stamped & Formed	Socket	14-16	13	Nickel
16	AT60-16-0144	Stamped & Formed	Pin	16-18	13	Gold
16	AT60-16-0122	Stamped & Formed	Pin	16-18	13	Nickel
16	AT62-16-0144	Stamped & Formed	Socket	16-18	13	Gold
16	AT62-16-0122	Stamped & Formed	Socket	16-18	13	Nickel
16	AT60-16-0644	Stamped & Formed	Pin	18-20	13	Gold
16	AT60-16-0622	Stamped & Formed	Pin	18-20	13	Nickel
16	AT62-16-0644	Stamped & Formed	Socket	18-20	13	Gold
16	AT62-16-0622	Stamped & Formed	Socket	18-20	13	Nickel



## 27 POSITION ACCESSORIES

Shell Size  
**24**



Recommended Panel Mounting Hole  
Recommended panel thickness: 1.6 to 4.7mm

Part Number

**AHDP24-PN01**

Panel Nut, Shell Size 24



Part Number

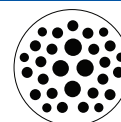
**AT14-001-2486**

Metal Lock Washer  
Shell Size 24





# 29 POSITION PLUGS & RECEPTACLES



**DURA|MATE**  
29 POSITIONS  
7.5A,13A,25A

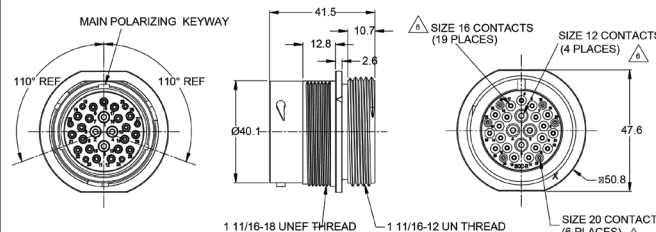
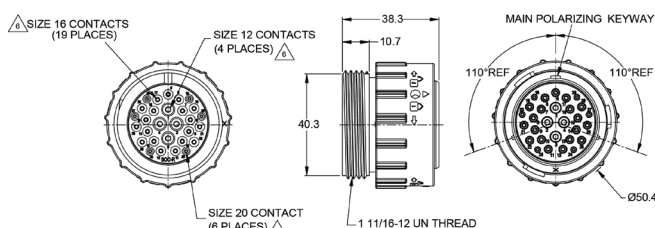
Shell Size  
**24**

Contact Size	<b>20</b>	<b>16</b>	<b>12</b>
Contact Qty	6	19	4
Seal OD Range			
REDUCED SEAL	1.02mm (.040") - 2.41mm (.095")	1.35mm (.053") - 3.05mm (.120")	2.46mm (.097") - 4.01mm (.158")
Wire Range	16-22 AWG	14-20 AWG	10-14 AWG
Amperage	7.5	13	25



## PLUG

## RECEPTACLE



Standard and reverse terminal genders allows for custom polarization

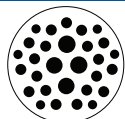
<b>Part Number</b> <b>AHDP06-24-29SR-WTA</b>	Gender: Standard Contact: Socket
Rear Seal Type: REDUCED SEAL, Blue	
Description: Size 24 Plug with 29 positions, Socket standard arrangement, RD01 reduced diameter seal, wide thread adapter	
Mating Part(s): AHDP04-24-29PR-WTA	
See Receptacle column on this page for more details	

<b>Part Number</b> <b>AHDP04-24-29PR-WTA</b>	Gender: Standard Contact: Pin
Rear Seal Type: REDUCED SEAL, Blue	
Description: Size 24 Receptacle with 29 positions, Pin, standard arrangement, RD01 reduced diameter seal, wide thread adapter	
Mating Part(s): AHDP06-24-29SR-WTA	
See Plug column on this page for more details	

<b>Part Number</b> <b>AHDP06-24-29PR-WTA</b>	Gender: Reversed Contact: Pin
Rear Seal Type: REDUCED SEAL, Blue	
Description: Size 24 Plug with 29 positions, Pin reverse arrangement, RD01 reduced diameter seal, wide thread adapter	
Mating Part(s): AHDP04-24-29SR-WTA	
See Receptacle column on this page for more details	

<b>Part Number</b> <b>AHDP04-24-29SR-WTA</b>	Gender: Reversed Contact: Socket
Rear Seal Type: REDUCED SEAL, Blue	
Description: Size 24 Receptacle with 29 positions, Socket, reverse arrangement, RD01 reduced diameter seal, wide thread adapter	
Mating Part(s): AHDP06-24-29PR-WTA	
See Plug column on this page for more details	

For custom insert configurations, please call 1 800 394 7732

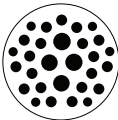


## 29 POSITION PLUGS & RECEPTACLES - CONTACTS

Shell Size  
**24**

Contact Size	Part No.	Type	(Pin/Socket)	Wire Range (AWG)	AMP	Plating
12	AT60-204-12141	Machined	Pin	12-14	25	Nickel
12	AT60-220-1231	Machined	Pin	12-14	25	Gold
12	AT62-203-12141	Machined	Socket	12-14	25	Nickel
12	AT62-210-1231	Machined	Socket	12-14	25	Gold
12	AT60-12-0222	Stamped & Formed	Pin	10-12	25	Nickel
12	AT60-12-0244	Stamped & Formed	Pin	10-12	25	Gold
12	AT62-12-0222	Stamped & Formed	Socket	10-12	25	Nickel
12	AT62-12-0244	Stamped & Formed	Socket	10-12	25	Gold
12	AT60-12-0166	Stamped & Formed	Pin	12-14	25	Nickel
12	AT60-12-0144	Stamped & Formed	Pin	12-14	25	Gold
12	AT62-12-0166	Stamped & Formed	Socket	12-14	25	Nickel
12	AT62-12-0144	Stamped & Formed	Socket	12-14	25	Gold
16	AT60-215-16141	Machined	Pin	14	13	Nickel
16	AT60-215-1631	Machined	Pin	14	13	Gold
16	AT62-209-16141	Machined	Socket	14	13	Nickel
16	AT62-209-1631	Machined	Socket	14	13	Gold
16	AT60-202-16141	Machined	Pin	16-20	13	Nickel
16	AT60-202-1631	Machined	Pin	16-20	13	Gold
16	AT62-201-16141	Machined	Socket	16-20	13	Nickel
16	AT62-201-1631	Machined	Socket	16-20	13	Gold
16	AT60-14-0122	Stamped & Formed	Pin	14-16	13	Nickel
16	AT60-14-0144	Stamped & Formed	Pin	14-16	13	Gold
16	AT60-16-0122	Stamped & Formed	Pin	16-18	13	Nickel
16	AT60-16-0144	Stamped & Formed	Pin	16-18	13	Gold
16	AT62-16-0122	Stamped & Formed	Socket	16-18	13	Nickel
16	AT62-16-0144	Stamped & Formed	Socket	16-18	13	Gold
16	AT60-16-0622	Stamped & Formed	Pin	18-20	13	Nickel
16	AT60-16-0644	Stamped & Formed	Pin	18-20	13	Gold
16	AT62-16-0622	Stamped & Formed	Socket	18-20	13	Nickel
16	AT62-16-0644	Stamped & Formed	Socket	18-20	13	Gold
20	AT60-202-20141	Machined	Pin	20-22	7.5	Nickel
20	AT60-202-2031	Machined	Pin	20-22	7.5	Gold
20	AT62-201-20141	Machined	Socket	20-22	7.5	Nickel
20	AT62-201-2031	Machined	Socket	20-22	7.5	Gold
20	AT60-20-0122	Stamped & Formed	Pin	16-22	7.5	Nickel
20	AT60-20-0144	Stamped & Formed	Pin	16-22	7.5	Gold
20	AT62-20-0122	Stamped & Formed	Socket	16-22	7.5	Nickel
20	AT62-20-0144	Stamped & Formed	Socket	16-22	7.5	Gold

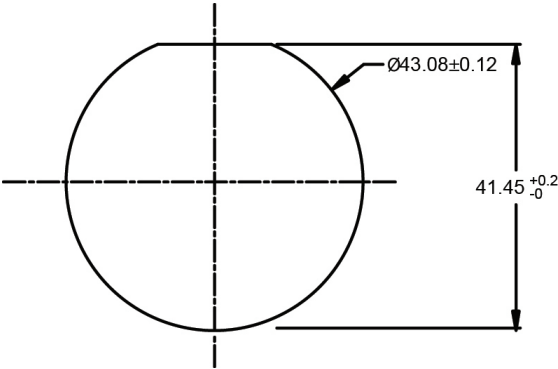
29 POSITION PLUGS & RECEPTACLES



**DURA|MATE**  
**29 POSITIONS**  
**7.5A, 13A, 25A**

Shell Size  
**24**

Recommended Panel Mounting Hole  
Recommended panel thickness: 1.6 to 4.7mm



Part Number  
**AHDP24-PN01**

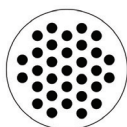
Panel Nut, Shell Size 24



Part Number  
**AT14-001-2486**

Metal Lock Washer  
Shell Size 24





Shell Size  
**24**

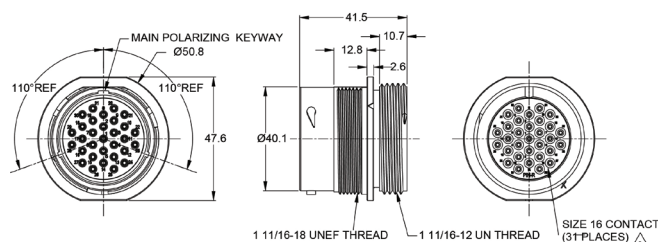
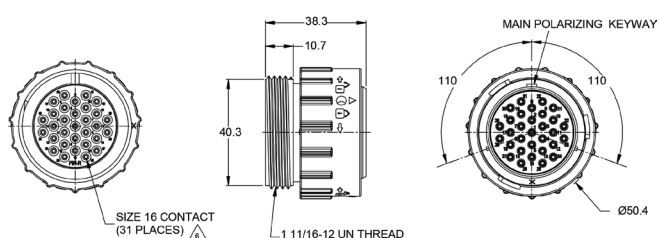
## 31 POSITION PLUGS & RECEPTACLES

Contact Size	<b>16</b>
Contact Qty	31
Seal OD Range	
REDUCED SEAL	1.35mm (.053") - 3.05mm (.120")
THIN SEAL	2.23mm (.088") - 3.40mm (.134")
Wire Range (AWG)	14-20 AWG
Amperage	13



### PLUG

### RECEPTACLE



Standard and reverse terminal genders allows for custom polarization

<b>Part Number</b> <b>AHDP06-24-31SR-WTA</b>	Gender: Standard Contact: Socket
Rear Seal Type: REDUCED SEAL, Blue	
Description: Size 24 Plug with 31 positions, Socket, standard arrangement, RD01 reduced diameter seal, wide thread adapter	
Mating Part(s): AHDP04-24-31PR-WTA, AHDP04-24-31PT-WTA	
See Receptacle column on this page for more details	

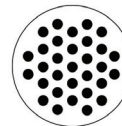
<b>Part Number</b> <b>AHDP04-24-31PR-WTA</b>	Gender: Standard Contact: Pin
Rear Seal Type: REDUCED SEAL, Blue	
Description: Size 24 Receptacle with 31 positions, Pin, standard arrangement, RD01 reduced diameter seal, wide thread adapter	
Mating Part(s): AHDP06-24-31SR-WTA, AHDP06-24-31ST-WTA	
See Plug column on this page for more details	

<b>Part Number</b> <b>AHDP06-24-31ST-WTA</b>	Gender: Standard Contact: Socket
Rear Seal Type: THIN SEAL, Grey	
Description: Size 24 Plug with 31 positions, Socket, standard arrangement, thin seal, wide thread adapter	
Mating Part(s): AHDP04-24-31PR-WTA, AHDP04-24-31PT-WTA	
See Receptacle column on this page for more details	

<b>Part Number</b> <b>AHDP04-24-31PT-WTA</b>	Gender: Standard Contact: Pin
Rear Seal Type: THIN SEAL, Grey	
Description: Size 24 Receptacle with 31 positions, Pin, standard arrangement, thin seal, wide thread adapter	
Mating Part(s): AHDP06-24-31SR-WTA, AHDP06-24-31ST-WTA	
See Plug column on this page for more details	

For custom insert configurations, please call 1 800 394 7732

# 31 POSITION PLUGS & RECEPTACLES



**DURA|MATE**  
**31 POSITIONS**  
**13A**

Shell Size  
**24**

CONNECTOR SOLUTIONS

PLUG		RECEPTACLE	
Part Number <b>AHDP06-24-31PR-WTA</b>	Gender: Reversed Contact: Pin	Part Number <b>AHDP04-24-31SR-WTA</b>	Gender: Reversed Contact: Socket
Rear Seal Type: REDUCED SEAL, Blue		Rear Seal Type: REDUCED SEAL, Blue	
Description: Size 24 Plug with 31 positions, Pin, reverse arrangement, RD01 reduced diameter seal, wide thread adapter		Description: Size 24 Receptacle with 31 positions, Socket, reverse arrangement, RD01 reduced diameter seal, wide thread adapter	
Mating Part(s): AHDP04-24-31SR-WTA, AHDP04-24-31ST-WTA		Mating Part(s): AHDP06-24-31PR-WTA, AHDP06-24-31PT-WTA	
See Receptacle column on this page for more details		See Plug column on this page for more details	
Part Number <b>AHDP06-24-31PT-WTA</b>	Gender: Reversed Contact: Pin	Part Number <b>AHDP04-24-31ST-WTA</b>	Gender: Reversed Contact: Socket
Rear Seal Type: THIN SEAL, Grey		Rear Seal Type: THIN SEAL, Grey	
Description: Size 24 Plug with 31 positions, Pin, reverse arrangement, thin seal, wide thread adapter		Description: Size 24 Receptacle with 31 positions, Socket, reverse arrangement, thin seal, wide thread adapter	
Mating Part(s): AHDP04-24-31SR-WTA, AHDP04-24-31ST-WTA		Mating Part(s): AHDP06-24-31PR-WTA, AHDP06-24-31PT-WTA	
See Receptacle column on this page for more details		See Plug column on this page for more details	

## 31 Pin Plugs & Receptacles - Contacts

Contact Size	Part No.	Type	(Pin/Socket)	Wire Range (AWG)	AMP	Plating
16	AT60-215-16141	Machined	Pin	14	13	Nickel
16	AT60-215-1631	Machined	Pin	14	13	Gold
16	AT62-209-16141	Machined	Socket	14	13	Nickel
16	AT62-209-1631	Machined	Socket	14	13	Gold
16	AT60-202-16141	Machined	Pin	16-20	13	Nickel
16	AT60-202-1631	Machined	Pin	16-20	13	Gold
16	AT62-201-16141	Machined	Socket	16-20	13	Nickel
16	AT62-201-1631	Machined	Socket	16-20	13	Gold
16	AT60-14-0122	Stamped & Formed	Pin	14-16	13	Nickel
16	AT60-14-0144	Stamped & Formed	Pin	14-16	13	Gold

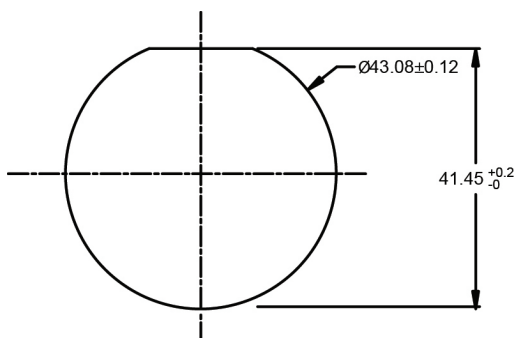


## 31 POSITION PLUGS & RECEPTACLES

Shell Size  
**24**

Contact Size	Part No.	Type	(Pin/Socket)	Wire Range (AWG)	AMP	Plating
16	AT60-16-0122	Stamped & Formed	Pin	16-18	13	Nickel
16	AT60-16-0144	Stamped & Formed	Pin	16-18	13	Gold
16	AT60-16-0622	Stamped & Formed	Pin	18-20	13	Nickel
16	AT60-16-0644	Stamped & Formed	Pin	18-20	13	Gold
16	AT62-14-0122	Stamped & Formed	Socket	14-16	13	Nickel
16	AT62-14-0144	Stamped & Formed	Socket	14-16	13	Gold
16	AT62-16-0122	Stamped & Formed	Socket	16-18	13	Nickel
16	AT62-16-0144	Stamped & Formed	Socket	16-18	13	Gold
16	AT62-16-0622	Stamped & Formed	Socket	18-20	13	Nickel
16	AT62-16-0644	Stamped & Formed	Socket	18-20	13	Gold

Recommended Panel Mounting Hole  
Recommended Panel thickness: 1.6 to 4.7mm



Part Number

**AHDP24-PN01**

Panel Nut, Shell Size 24



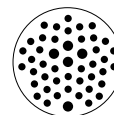
Part Number

**AT14-001-2486**

Metal Lock Washer  
Shell Size 24



# 47 Position Plugs & Receptacles



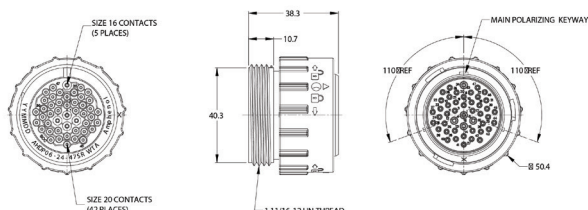
**DURA|MATE**  
47 POSITIONS  
7.5A,13A

Shell Size  
**24**

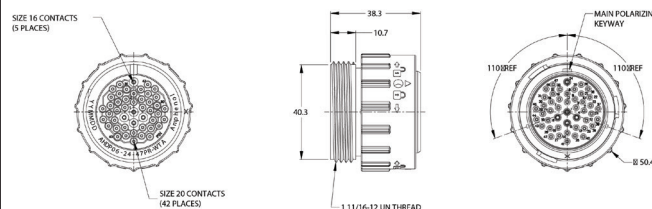
Contact Size	<b>20</b>	<b>16</b>
Contact Qty	42	5
Seal OD Range		
REDUCED SEAL	1.02mm (.040") - 2.41mm (.095")	1.35mm (.053") - 3.05mm (.120")
Wire Range	16-22 AWG	14-20 AWG
Amperage	7.5	13



## PLUG



## RECEPTACLE



Standard and reverse terminal genders allows for custom polarization

<b>Part Number</b> <b>AHDP06-24-47SR-WTA</b>	Gender: Standard Contact: Socket
Rear Seal Type: REDUCED SEAL, Blue	
Description: Size 24 Plug with 47 positions, Socket, standard arrangement, reduced seal, wide thread adapter	
Mating Part(s): AHDP04-24-47PR-WTA	
See Receptacle column on this page for more details	

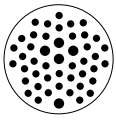
<b>Part Number</b> <b>AHDP04-24-47PR-WTA</b>	Gender: Standard Contact: Pin
Rear Seal Type: REDUCED SEAL, Blue	
Description: Size 24 Receptacle with 47 positions, Pin, standard arrangement, reduced seal, wide thread adapter	
Mating Part(s): AHDP06-24-47SR-WTA	
See Plug column on this page for more details	

<b>Part Number</b> <b>AHDP06-24-47PR-WTA</b>	Gender: Reversed Contact: Pin
Rear Seal Type: REDUCED SEAL, Blue	
Description: Size 24 Plug with 47 positions, Pin, reversed arrangement, reduced seal, wide thread adapter	
Mating Part(s): AHDP04-24-47SR-WTA	
See Receptacle column on this page for more details	

<b>Part Number</b> <b>AHDP04-24-47SR-WTA</b>	Gender: Reversed Contact: Socket
Rear Seal Type: REDUCED SEAL, Blue	
Description: Size 24 Receptacle with 47 positions, Socket, reversed arrangement, reduced seal, wide thread adapter	
Mating Part(s): AHDP06-24-47PR-WTA	
See Plug column on this page for more details	

For custom insert configurations, please call 1 800 394 7732



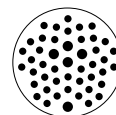


## 47 POSITION PLUGS & RECEPTACLES - CONTACTS

Shell Size  
**24**

Contact Size	Part No.	Type	(Pin/Socket)	Wire Range (AWG)	AMP	Plating
16	AT60-215-16141	Machined	Pin	14	13	Nickel
16	AT60-215-1631	Machined	Pin	14	13	Gold
16	AT62-209-16141	Machined	Socket	14	13	Nickel
16	AT62-209-1631	Machined	Socket	14	13	Gold
16	AT60-202-16141	Machined	Pin	16-20	13	Nickel
16	AT60-202-1631	Machined	Pin	16-20	13	Gold
16	AT62-201-16141	Machined	Socket	16-20	13	Nickel
16	AT62-201-1631	Machined	Socket	16-20	13	Gold
16	AT60-14-0122	Stamped & Formed	Pin	14-16	13	Nickel
16	AT60-14-0144	Stamped & Formed	Pin	14-16	13	Gold
16	AT62-14-0122	Stamped & Formed	Socket	14-16	13	Nickel
16	AT62-14-0144	Stamped & Formed	Socket	14-16	13	Gold
16	AT60-16-0122	Stamped & Formed	Pin	16-18	13	Nickel
16	AT60-16-0144	Stamped & Formed	Pin	16-18	13	Gold
16	AT62-16-0122	Stamped & Formed	Socket	16-18	13	Nickel
16	AT62-16-0144	Stamped & Formed	Socket	16-18	13	Gold
16	AT60-16-0622	Stamped & Formed	Pin	18-20	13	Nickel
16	AT60-16-0644	Stamped & Formed	Pin	18-20	13	Gold
16	AT62-16-0622	Stamped & Formed	Socket	18-20	13	Nickel
16	AT62-16-0644	Stamped & Formed	Socket	18-20	13	Gold
20	AT60-202-20141	Machined	Pin	20-22	7.5	Nickel
20	AT60-202-2031	Machined	Pin	20-22	7.5	Gold
20	AT62-201-20141	Machined	Socket	20-22	7.5	Nickel
20	AT62-201-2031	Machined	Socket	20-22	7.5	Gold
20	AT60-20-0122	Stamped & Formed	Pin	16-22	7.5	Nickel
20	AT60-20-0144	Stamped & Formed	Pin	16-22	7.5	Gold
20	AT62-20-0122	Stamped & Formed	Socket	16-22	7.5	Nickel
20	AT62-20-0144	Stamped & Formed	Socket	16-22	7.5	Gold

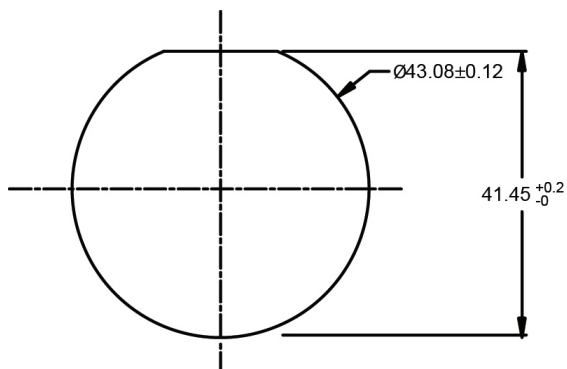
## 47 POSITION PLUGS & RECEPTACLES



**DURA|MATE**  
29 POSITIONS  
7.5A, 13A

Shell Size  
**24**

Recommended Panel Mounting Hole  
Recommended panel thickness: 1.6 to 4.7mm



Part Number  
**AHDP24-PN01**

Panel Nut, Shell Size 24



Part Number  
**AT14-001-2486**

Metal Lock Washer  
Shell Size 24



**Part Number**  
**WA23-DS**

Heavy Duty Pneumatic Crimp Tool



**Part Number**  
**WA23-2**

Die Assembly for CA-5E12 Heavy Duty Pneumatic Crimp Tool, Size 8



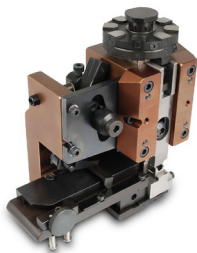
**Part Number**  
**WA23-10**

Contact Locator, Size 8



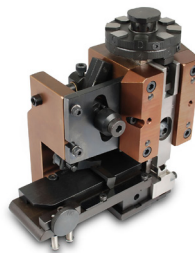
**Part Number**  
**MFX-3973**

Size 12 Crimp Die for Stamped and Formed Contacts



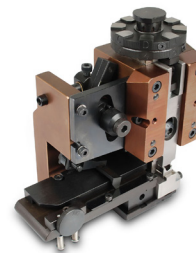
**Part Number**  
**MFX-3950**

Size 16 Crimp Die for Stamped and Formed Contacts 18-20 AWG



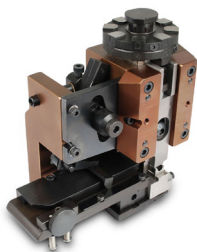
**Part Number**  
**MFX-3953**

Size 16 Crimp Die for Stamped and Formed Contacts 16-18 AWG



**Part Number**  
**MFX-3974**

Size 20 Crimp Die for Stamped and Formed Contacts



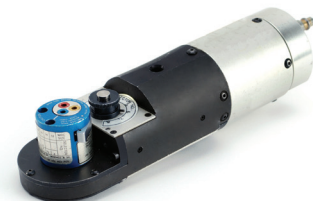
**Part Number**  
**CA-5D12**

Universal Hand Crimp Tool, Size 12/16/20 Solid Contacts Only



**Part Number**  
**CA-5E12**

Pneumatic Crimp Tool, Size 12/16/20 Solid Contacts Only



# DURA | MATE TOOLS(con't)

<b>Part Number</b> <b>ATT-20-00</b>
Size 20 Stamped and Formed Contact Tool 20 AWG


<b>Part Number</b> <b>AT11-240-2005</b>
Contact Removal Tool, plastic, Size 20


<b>Part Number</b> <b>AT11-310-1605</b>
Contact Removal Tool, plastic Size 16


<b>Part Number</b> <b>ATT-16-00</b>
Size 16 Stamped and Formed Contact Tool 14-16 AWG


<b>Part Number</b> <b>AT11-337-1205</b>
Contact Removal Tool, plastic Size 12


<b>Part Number</b> <b>AT11-001-3.6M</b>
Contact Removal Tool, plastic Size 8 (3.6 mm)


<b>Part Number</b> <b>ATT-16-01</b>
Size 16 Stamped and Formed Contact Tool 18-20 AWG


<b>Part Number</b> <b>ATT-12-00</b>
Size 12 Stamped and Formed Contact Tool 12 AWG


**Part Number**  
**AHDPBS-0406-001**

Size 24 Backshell WTA



**Part Number**  
**AHDPBS-0406-002**

Size 24 Backshell WTA with  
compression nut  
Cable diameter range: .57-.71"



**Part Number**  
**AHDPBS-0406-003**

Size 24 Backshell WTA with  
compression nut  
Cable diameter range: .76-.95"



**Part Number**  
**AHDPBS-18-001**

Size 18 Backshell WTA



**Part Number**  
**AHDC18-18**

Size 18 Protective Cap



**Part Number**  
**AHDC24-24**

Size 24 Protective Cap



**Part Number**  
**AHDP-16-04978**

Size 18 Rubber Flange Seal



**Part Number**  
**AHDP-16-04477**

Size 24 Rubber Flange Seal



[www.amphenol-sine.com](http://www.amphenol-sine.com)

## **USA**

**Amphenol Sine Systems**  
44724 Morley Drive  
Clinton Township, MI 48036  
Toll-Free: 1-800-394-7732  
Fax: 1-586-465-1216  
Email: [csr@amphenol-sine.com](mailto:csr@amphenol-sine.com)  
[www.amphenol-sine.com](http://www.amphenol-sine.com)

## **Germany**

**Amphenol Tuchel GmbH**  
August-Haeusser-Strasse 10  
Heilbronn, Germany 74080  
Phone: 49(0)-7131-929-0  
Fax: 49(0)-7131-929-486  
Email: [info@amphenol.de](mailto:info@amphenol.de)  
[www.amphenol.de](http://www.amphenol.de)

## **China**

**Amphenol Sine Systems**  
Building 21, 1st Liao Keng Industrial Zone,  
Shi Yan Street, Bao An District  
Shenzhen, China 518180  
Tel: 86-755-8173-8000 ext. 8098  
Fax: 86-755-8173-8180  
[www.amphenol-sine.com.cn](http://www.amphenol-sine.com.cn)

## **USA**

**Amphenol Corporation**  
**Corporate Headquarters**  
358 Hall Ave  
Wallingford Ct 06492  
Phone: (877) 267-4366  
[www.amphenol.com](http://www.amphenol.com)

## **Mexico**

**Prolongacion Reforma 61-6 B2**  
Col. Paseo de las Lomas  
C.P. 01330 Mexico DF, Mexico  
Phone: 52-55-5258-9984  
Fax: 52-55-5081-6890  
Email: [info@amphenolmexico.com](mailto:info@amphenolmexico.com)  
[www.amphenolmexico.com](http://www.amphenolmexico.com)

## **Argentina**

**Amphenol ARGENTINA**  
Avenida Callao 930  
2nd floor Office B Plaza  
C1023AAP Buenos Aires, Argentina  
Phone: 54-11-4815-6886  
Fax: 54-11-4814-5779  
Email: [info@amphenol.com.ar](mailto:info@amphenol.com.ar)  
[amphenol.com.ar](http://amphenol.com.ar)

## **Brazil**

**Amphenol do Brasil Ltda**  
Rua Diogo Moreira, 132  
20 Andar, Rooms 2001-2-3  
CEP 05423-101  
Sao Paulo- SP, Brazil  
Phone: 55-11-3815-1003  
Fax: 55-11-3815-1629  
[www.amphenol.com.br](http://www.amphenol.com.br)

## **France**

**Amphenol SOCAPEX**  
948, Promenade de l'Arve - BP 29  
74311 Thyez CEDEX, France  
Phone: 33(0)4-50-89-28-40  
Fax: 33(0)4-50-96-29-75  
[www.amphenol-socapex.com](http://www.amphenol-socapex.com)

## **United Kingdom**

**Amphenol LIMITED**  
Thanet Way, Whitstable  
Kent CT5 3JF, United Kingdom  
Phone: 44-1-227-773200  
Fax: 44-1-227-276571  
[www.amphenol.co.uk](http://www.amphenol.co.uk)

## **Australia**

**Amphenol AUSTRALIA PTY LIMITED**  
22 Industry Boulevard  
Carrum Downs VIC 3201 Australia  
Phone: +61-3-8796-8888  
Fax: +61-3-8796-8801  
[www.amphenol.com.au](http://www.amphenol.com.au)

## **Turkey**

**Amphenol International Ltd Turkey**  
Sun Plaza Kat. 15  
Maslak Mah. Bilim Sok. No. 5  
34398 Sisli / Istanbul - Turkey  
Tel: + 90 212 367.92.20  
Fax: + 90 212 367.92.21  
[www.amphenol.com.tr](http://www.amphenol.com.tr)

## **South Africa**

**Amphenol International Ltd**  
**South Africa**  
30 Impala Road  
2196 Sandton, Chislehurst  
South Africa  
Phone: 27-11-783-9517  
Fax: 27-11-783-9519  
Email: [sales@amphenolafrica.com](mailto:sales@amphenolafrica.com)  
[www.amphenol.com.za](http://www.amphenol.com.za)

## **India**

**Amphenol INTERCONNECT INDIA PVT LTD**  
105 Bhosari Industrial Area  
Pune 411 026, India  
Phone: +91 20 67360304  
Fax: +91 20 67360321  
[www.amphenol-in.com](http://www.amphenol-in.com)

## **Korea**

**Amphenol DAESHIN**  
558. Songnae-2 Dong. SoSa-Gu  
Bucheon City, Gyeonggi-do,  
Korea 422-818  
Phone: 81-32-610-3800  
Fax: 81-32-673-2507  
Email: [info@amphenol.co.kr](mailto:info@amphenol.co.kr)  
[www.amphenol.co.kr](http://www.amphenol.co.kr)

## **Japan**

**Amphenol JAPAN**  
471-1, Deba, Ritto-city  
shiga 520-3041, Japan  
Phone: 81-77-553-8501  
Fax: 81-77-551-2200  
[www.amphenol.co.jp](http://www.amphenol.co.jp)