

FLO+ K Series

Boost Your Productivity, Increase Your Profit



Benefits

- + Increase Over 50% of Cable Assembly Outputs
In Over 50% Less Time
- + Eliminate Epoxy and Glue Production Process
and Fallouts To Achieve IP68
- + Fewer Parts To Manage And Stock
- + More Productivities And Fewer Manpower



UL 94V-0



RoHS



Corrosion
Resistant



360°
Shielded



Quick
Installation



Harsh
Environment



IP68
(1.5M/24hrs)

Applications



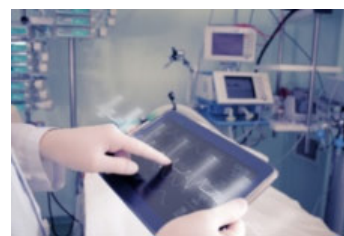
Military



HD Video Cameras



Testing &
Measurement Equipment



Non-Invasive Medical
Electronic Equipment

Specifications

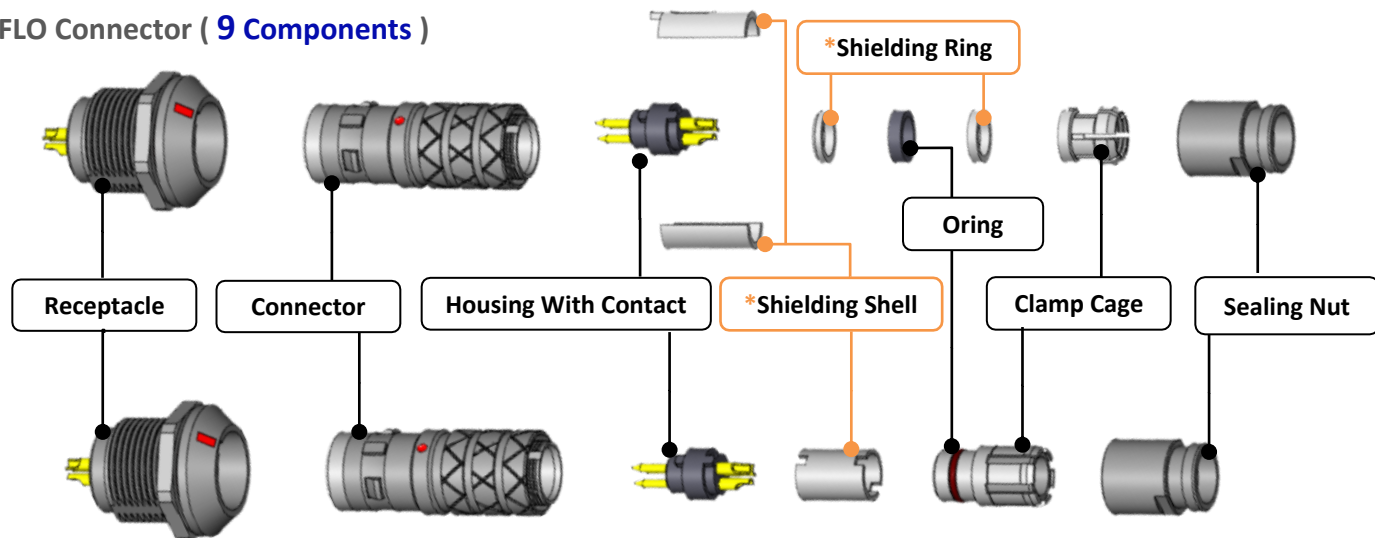
General Characteristics

Current Rating	1.5A~25A	Waterproof Rating	IP68 Receptacle (Unmated) IP68 Field Installable (Mated)
Pin	2~19	Mating Style	Push-pull Mechanism
Voltage Rating	160V~600V	Contact Resistant	21mΩ maximum
Durability	5,000 cycles	Salt Spray	72hr
Temperature Range	Receptacle / Field Installable: -40°C ~ +125°C Overmolded Cable: -20°C ~ 80°C	Mating force	14N max
		Unmating Force	9N min

*Overmolded cable available upon request

Comparison

FLO Connector (9 Components)




FLO+ Connector (6 Components)

* Shielding Shell: Combine into 1 component

* Shielding Ring: Removed

Key features

Characteristics	FLO+ Connector 	FLO Connector
Waterproof (Field Installable)	No Glue Required For IP68	IP68 With Potting Materials (3 Times)
Waterproof (Receptacle)	Unmated IP68	Mated IP68
Assembly Efficiency	6 Components	9 Components

