

FEATHERMATE



Features

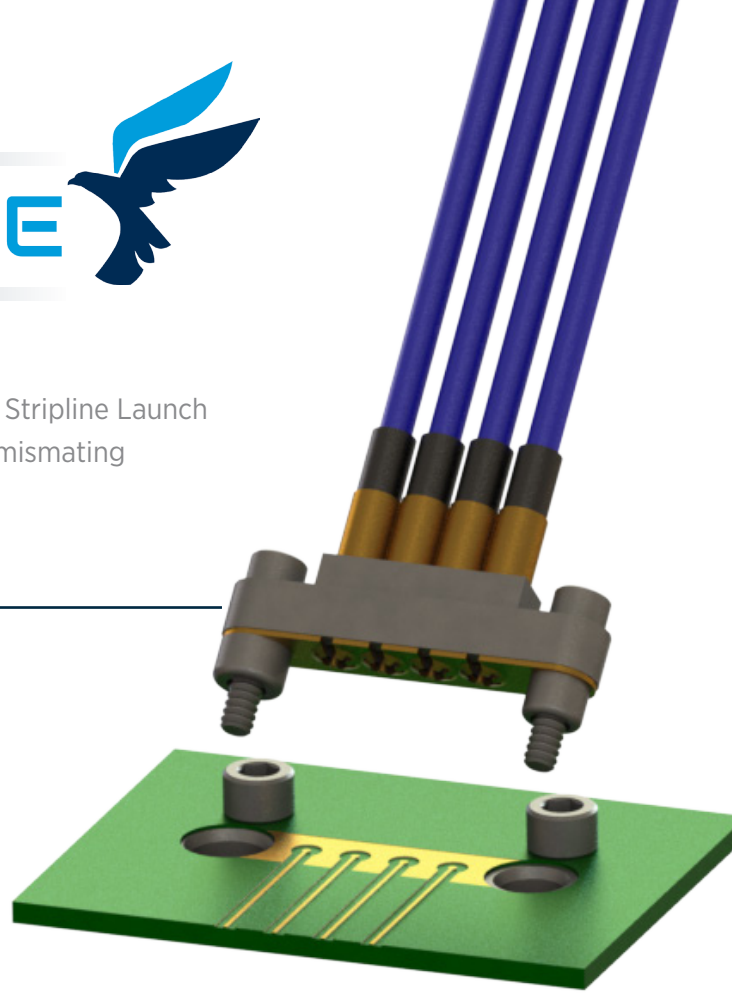
- Zero force to disengage
- 40 GHz frequency range
- .085" [2.16mm] pitch
- 1,000 min mating cycles
- 4 and 8 port available
- CPW/Microstrip or Stripline Launch
- Keying eliminates mismatching
- Two cable options
- RoHS Compliant

Applications

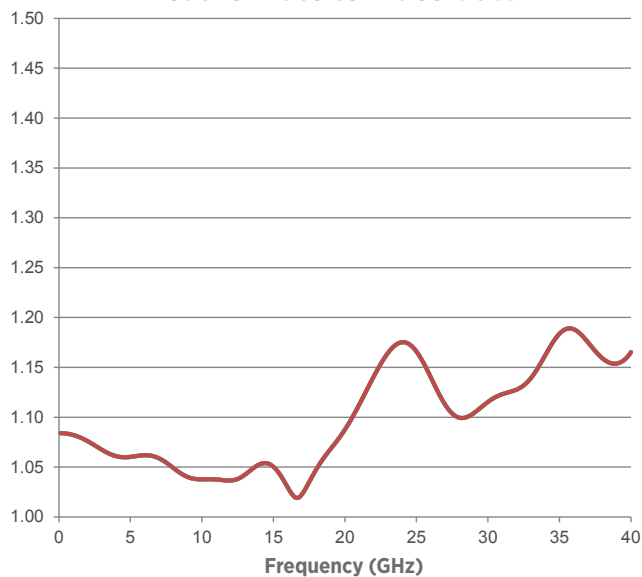
- Bench-top testing
- Evaluation boards
- Automated Test Equipment (ATE)
- High density multiports

Benefits

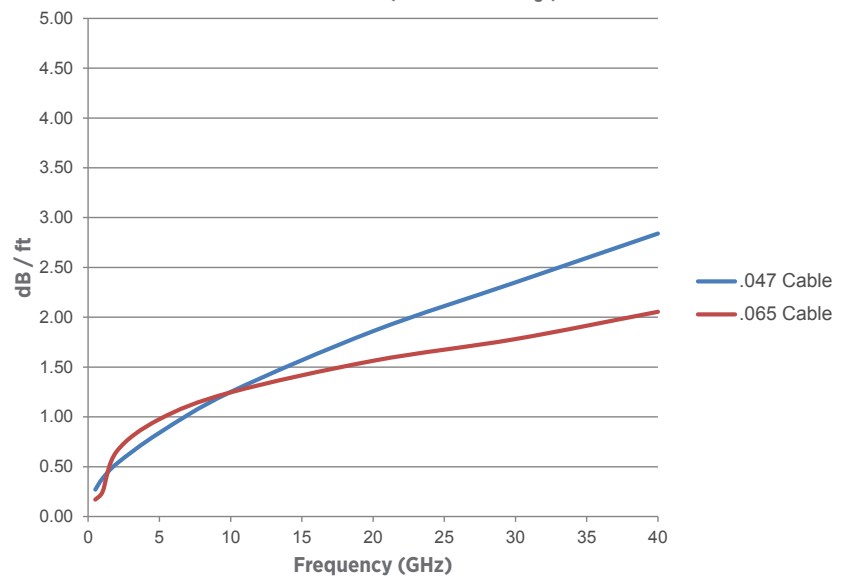
- Zero disengagement eliminates damage to PCB solder joints
- Direct contact with PCB trace for optimal performance
- No custom tooling required
- Solder free installation
- Reflow oven (265°C) safe

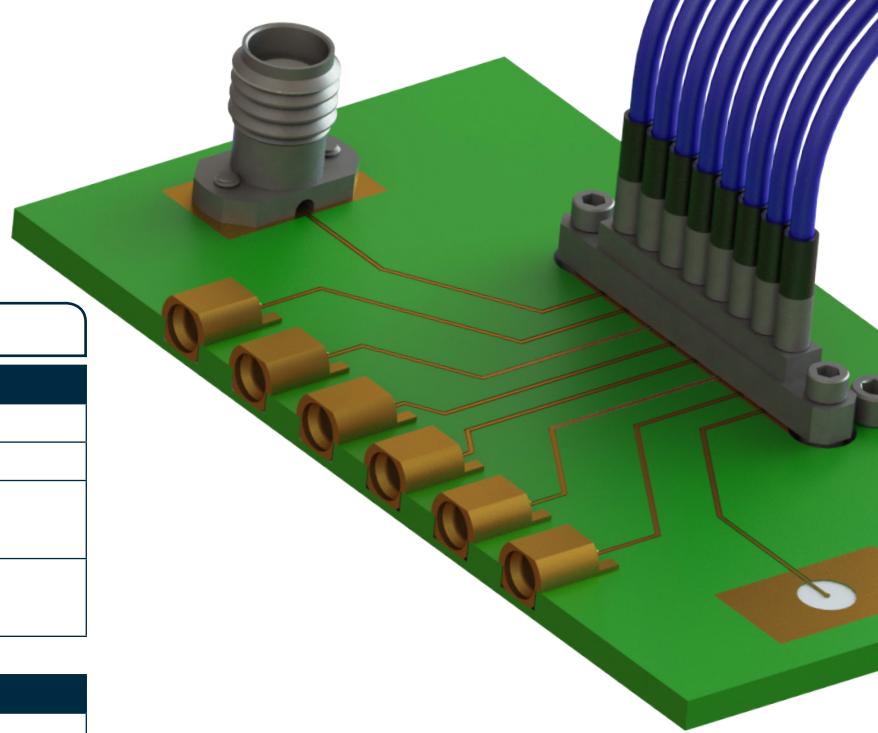


FeatherMate to Trace VSWR



Insertion Loss (Cable Only)





Specifications

Electrical	Condition	Specification
Frequency Range		DC - 40 GHz
Impedance		50Ω
VSWR	DC to 18 GHz DC to 40 GHz	1.15:1 1.20:1
Max Insertion Loss (12" assembly)	.047" Flex (200-70-214) .065" Flex (200-70-309)	3.5 dB @ 40 GHz 2.7 dB @ 40 GHz

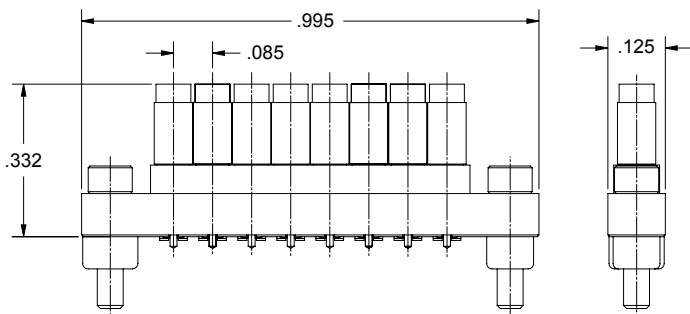
Mechanical	Specification
Center to Center Spacing	.085" [2.16mm]
Engage Force	2 oz/port
Disengage Force	Zero
Mating Cycles (min)	1000
Temperature Range (Cable Assembly)	-65 to +165°C
Temperature Range (PCB Mount Bracket)	-65 to +265°C (Suitable for Reflow Oven)

Connector Options	Cable Type	Connector P/N
2.92mm Male	.065 Cable	SF1511-60072
2.92mm Female	.065 Cable	SF1521-60079
2.92mm Male	.047 Cable	SF1511-60069
2.92mm Female	.047 Cable	SF1521-60039

FeatherMate Connector, 8 Port

Part Number SF9301-60013 for .047 Cable

Part Number SF9301-60017 for .065 Cable



FeatherMate Connector, 4 Port

Part Number SF9301-60009 for .047 Cable

Part Number SF9301-60016 for .065 Cable

