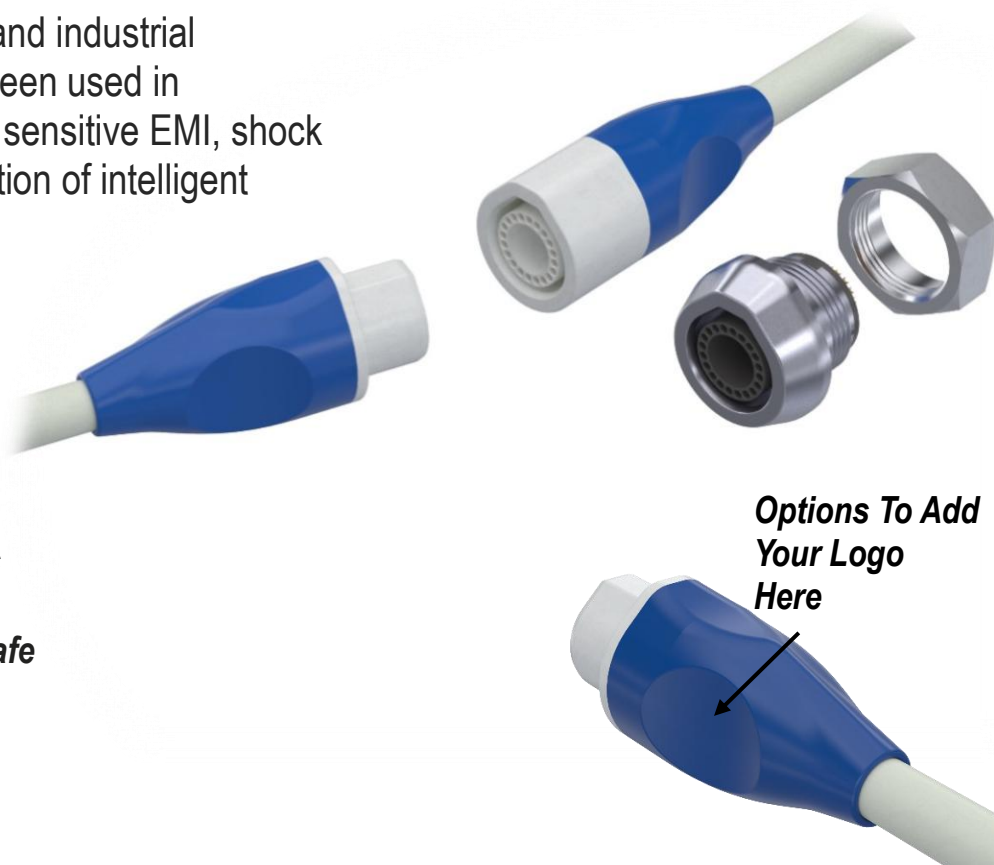


Onanon's *MagConnect® | Hero* is performance engineered to be the most intuitive interconnect in the world. Its unique magnetic safety latch feature is ideal for medical applications, where time, precision, and quality are most critical. Additional suitable markets include but are not limited to the automotive, aerospace and industrial industries. MagConnect® series has been used in applications with low & high voltages, sensitive EMI, shock & vibration environments, and integration of intelligent electronics.

- **2 to 20 pin capacity**
- **Intuitive and self-mating**
- **Magnetic safety de-latching**
- **Customizable for reusable or single use applications**
- **Easily add components such as EEPROMs, resistors and capacitors**
- **EMI/RFI Safe**
- **Low (<12v) & High (>5000v) Voltage Safe**
- **Rugged use in outdoor wearables**
- **VF/HF/RF Safe**



## Specifications

### Mechanical

**Mating Type:** Magnetic  
**Mating Cycles:** 10k Min  
**Mating Forces:**  
 Insertion: Magnetic  
 Removal: 3.5 lbf Min

### Electrical

**Operating Voltage:**  
 1kVAC and 1.5kVDC  
**Operating Current:** 3A

### Environmental

**Sterilizable:** Gamma, EtO  
**Chemical Resistance:** Common cleaning solvents  
**Finger Safety:** IEC 60601-1  
**Storage & Operating Temp:**  
 0-150°C

### Compatibility

**Contacts:** 20 pins  
**Plug Cable Assembly**  
**Accepted Wire Gauges:** 26-50 AWG  
**Cable Jacket OD:** 0.286" Max  
**Contact Termination:** Solder  
**In-Line Receptacle Cable Assembly**  
**Accepted Wire Gauges:** 26-50 AWG  
**Cable Jacket OD:** 0.286" Max  
**Contact Termination:** Solder

MagConnect® has been tested and in production for numerous applications, such as High-Voltage >5000VAC, Low Voltage <12v, HF/RF, RFA, EHF, EMI, RFI, RFID, Wi-Fi



## Self-Mating

Intuitive tear drop shape allows for easy alignment and mating



## Sterilizable

Chemical-resistant materials are easy to clean and withstand repeated wipe-downs using common hospital disinfectants

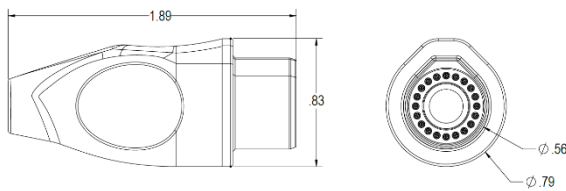


## Magnetic Safety Latch

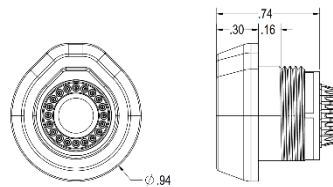
Magnetic interlock ensures a robust, safe, and reliable connection

## Dimensions

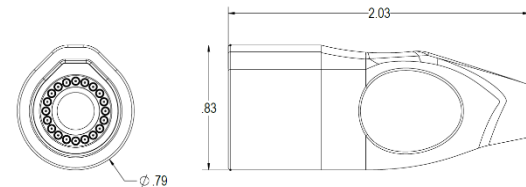
### Plug



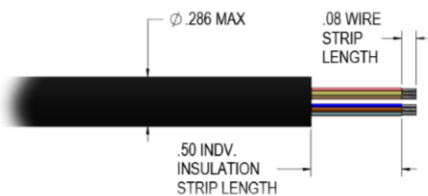
### Panel Mount Receptacle



### Inline Receptacle

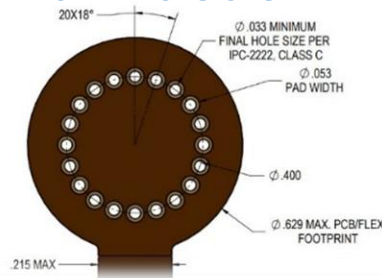


### Recommended Cable Specifications

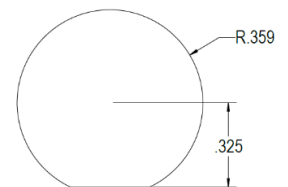


Units are in inches  
Contact Sales for unspecified dimensions

### Recommended PCB or Flex Dimensions



### Recommended Panel Cutout



## Materials & Assembly

### Plug Assembly

**Plug Housing:** Thermoplastic Polyester  
**Retaining Cap:** Thermoplastic Polyester  
**Pins:** Gold Plated Brass Alloy  
**Magnet:** Nickel Plated Neodymium  
**Slip-On Boot:** Thermoplastic Polyurethane

### Inline Receptacle Assembly

**Plug Housing:** Thermoplastic Polyester  
**Retaining Cap:** Thermoplastic Polyester  
**Pins:** Gold Plated Brass Alloy  
**Magnet:** Nickel Plated Neodymium  
**Slip-On Boot:** Thermoplastic Polyurethane

### Panel Mount Receptacle

**Insulator Insert:** Thermoplastic Polyester  
**Metal Shell:** Chromium Plated Brass Alloy  
**Pins:** Gold Plated Brass Alloy  
**Magnet:** Nickel Plated Neodymium

**Required Assembly:** Assemble connector body after terminating wires

**Required Assembly:** Assemble connector body after terminating wires

**Required Assembly:** Solder a PCB or flex assembly

# Onanon Connector Series MagConnect® | Hero



## Plug

193-A001-**XXX**-**XXXX**-**X**

**NO. OF CONTACTS** (see pg 2)  
06, 10, 14, 18, 20

**CONTACT TYPE**  
S – SOLDER CUP  
R – ROBOSOLDER®

**PLUG COLOR**  
B – BLACK ; W – WHITE

**BOOT ID**  
280 =  $\varnothing 0.280"$  ; 102 =  $\varnothing 0.102"$

**BOOT COLOR**  
B – BLACK      N – GREEN  
G – GREY      W – WHITE  
R – RED      U – BLUE  
Y – YELLOW



## In-Line Receptacle

193-A003-**XXX**-**XXXX**-**X**

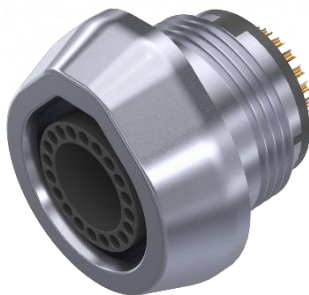
**NO. OF CONTACTS** (see pg 2)  
06, 10, 14, 18, 20

**CONTACT TYPE**  
S – SOLDER CUP  
R – ROBOSOLDER®

**PLUG COLOR**  
B – BLACK ; W – WHITE

**BOOT ID**  
280 =  $\varnothing 0.280"$  ; 102 =  $\varnothing 0.102"$

**BOOT COLOR**  
B – BLACK      N – GREEN  
G – GREY      W – WHITE  
R – RED      U – BLUE  
Y – YELLOW



## Panel Mount Receptacle

193-A002-**XXX**-**X**

**NO. OF CONTACTS** (see pg 2)  
06, 10, 14, 18, 20

**CONTACT TYPE**  
S – SOLDER CUP  
T – SOLDER TAIL

**INSULATOR COLOR**  
B – BLACK  
G – GREY  
R – RED  
Y – YELLOW  
N – GREEN  
W – WHITE  
U – BLUE

### Custom Options Available:

Reach out to our sales team about laser-engraved logos, personalized color options, high volume orders, and end-to-end custom cable assemblies, including our integrated SmartConnect™ capabilities.