



# MEGABIT



---

## CONTENTS

|                                |   |
|--------------------------------|---|
| TECHNICAL CHARACTERISTICS..... | 3 |
| HOW TO ORDER.....              | 4 |
| CONNECTOR STRUCTURE.....       | 5 |
| MEGABIT 2 x 4 (#20).....       | 6 |
| MEGABIT 2 x 4 (#16).....       | 7 |
| ATTACHEMENT.....               | 8 |
| CONTACTS.....                  | 9 |

### Number of contacts

2 x 4



### Features

Shielding bus separate from housing potential.  
Suitable for Ethernet Cat. 5e

### Specifications

DIN EN 60664-1

DIN EN 61984

### Module adapter

|                                  |                      |
|----------------------------------|----------------------|
| Number of contacts .....         | 2 x 4                |
| Insulation resistance .....      | > 10 <sup>10</sup> Ω |
| Material .....                   | Polycarbonate        |
| Limiting temperatures .....      | -40°C to +125°C      |
| Flammability acc. to UL 94 ..... | V0                   |
| Mechanical working life .....    | > 500 mating cycles  |

### MegaBit insert

|   |                     |
|---|---------------------|
| Number of contacts .....                    | 2 x 4 + shielding   |
| Electrical data acc. to DIN EN 61 984 ..... | 5A; 50V; 0.8kV; 3   |
| Rated current .....                         | 5A (#20), 10A (#16) |
| Rated voltage .....                         | 50V                 |
| Rated impulse voltage .....                 | 0.8kV               |
| Pollution degree .....                      | 3                   |
| <b>Material</b>                             |                     |
| • insulator .....                           | Polycarbonate       |
| • outer conductor .....                     | Zinc alloy          |
| Contact resistance .....                    | < 4 mΩ              |
| Limiting temperatures .....                 | -40°C to +125°C     |
| Flammability acc. to UL 94 .....            | V0                  |
| Outer surface finish .....                  | Nickel              |
| Cable diameter .....                        | 5 to 12mm           |

### Crimp contacts

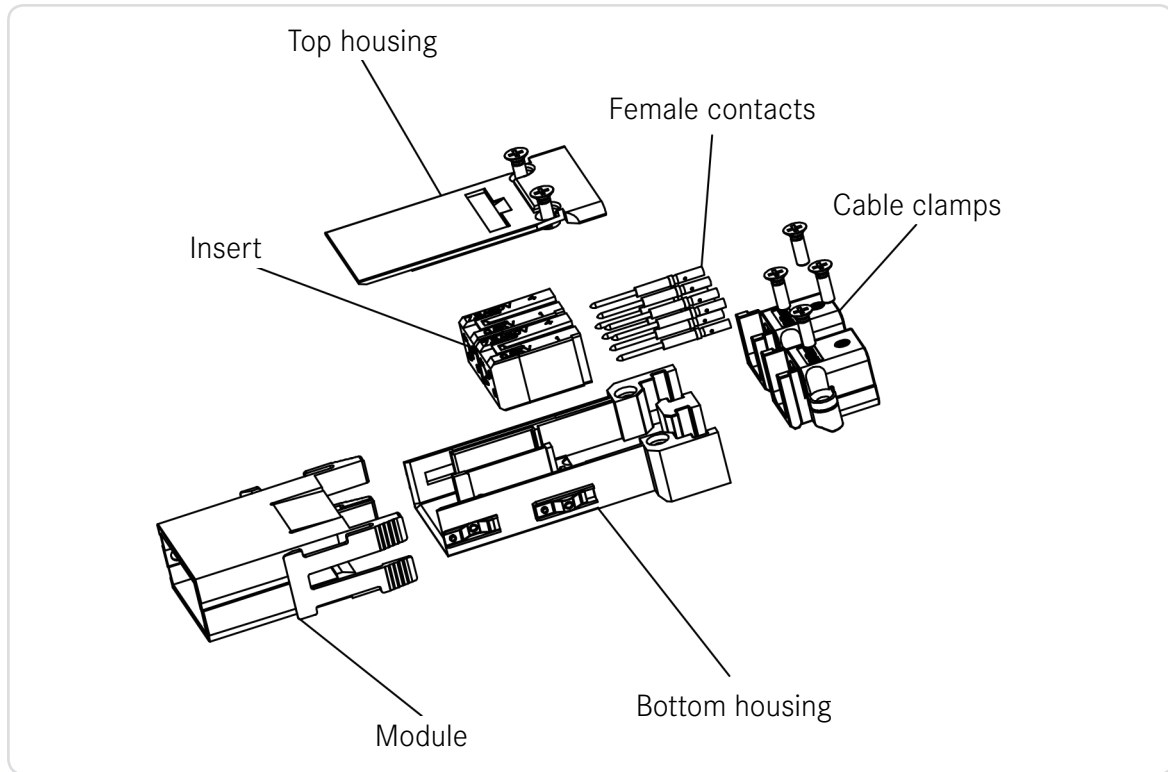
|                            |                              |
|----------------------------|------------------------------|
| Material .....             | Copper alloy                 |
| <b>Surface</b>             |                              |
| • hard silver plated ..... | 3 μm Ag                      |
| • hard gold plated .....   | 3 μm Au over 3 μm Ni         |
| Contact resistance .....   | 3 mΩ                         |
| <b>Crimp terminal</b>      |                              |
| • -mm <sup>2</sup> .....   | 0.09 to 0.52 mm <sup>2</sup> |
| • AWG .....                | 20 to 28                     |

## HOW TO ORDER

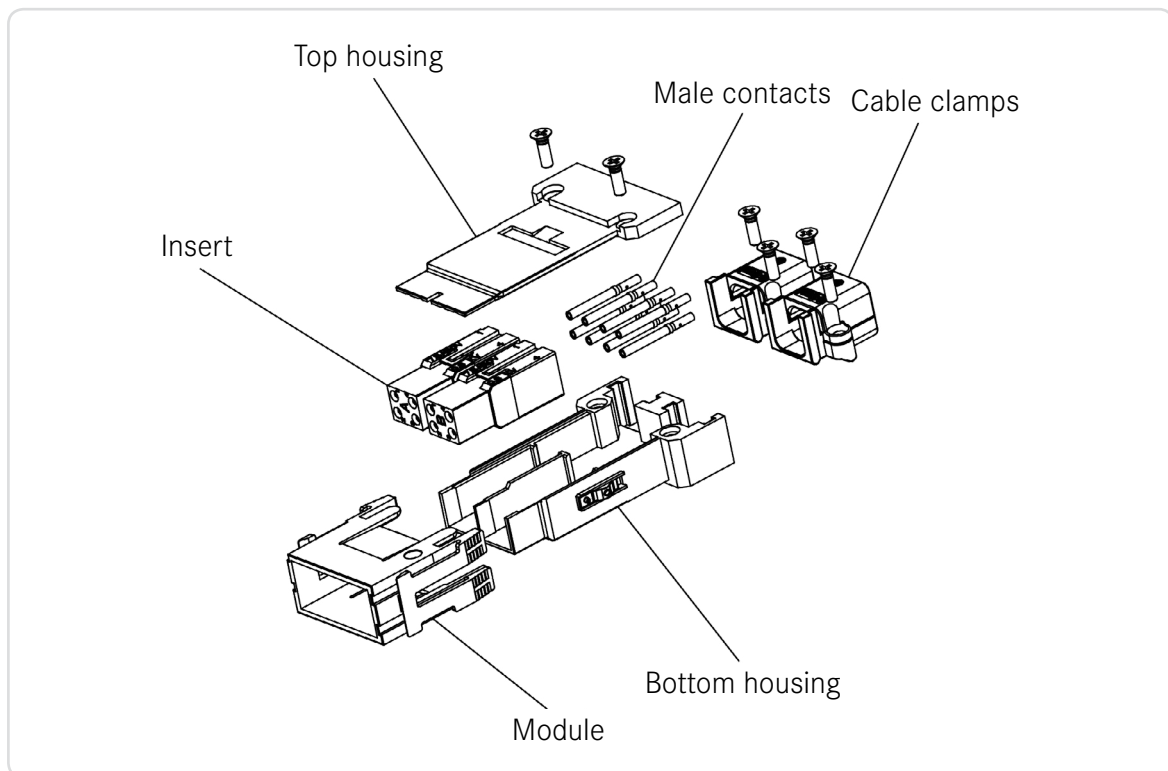
|  | ASRC | FM | 8 | 20 | SC | G | LC |
|--|------|----|---|----|----|---|----|
| Shell type<br>FM: Female MegaBit<br>MM: Male MegaBit                 |      |    |   |    |    |   |    |
| Number of pins<br>8: 2 x 4 positions                                 |      |    |   |    |    |   |    |
| Insert arrangement<br>16, 20   |      |    |   |    |    |   |    |
| Contact type<br>PC: Male contact, crimp<br>SC: Female contact, crimp |      |    |   |    |    |   |    |
| Earring clip<br>G: With earring clip<br>Omit: Without earring clip   |      |    |   |    |    |   |    |
| Contact option<br>LC: Without contacts<br>Omit: With contacts        |      |    |   |    |    |   |    |



RECEPTACLE



PLUG

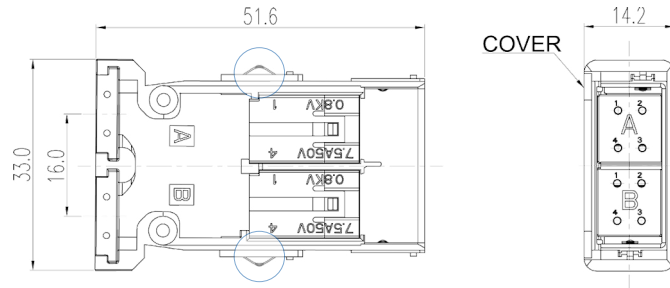


## MEGABIT 2 x 4 (#20)

### WITH EARRING CLIP

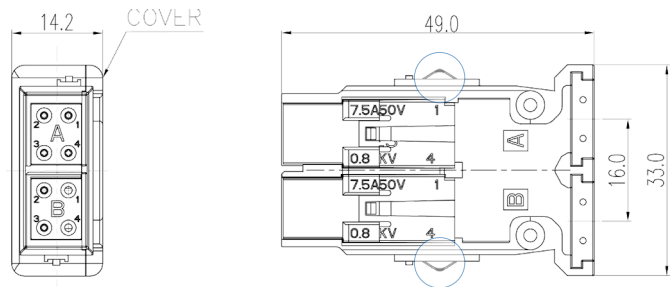
2 x 4 (#20) Receptacle with earring clip (Male contact)

ASRCFM420PCGLC



2 x 4 (#20) Plug with earring clip (Female contact)

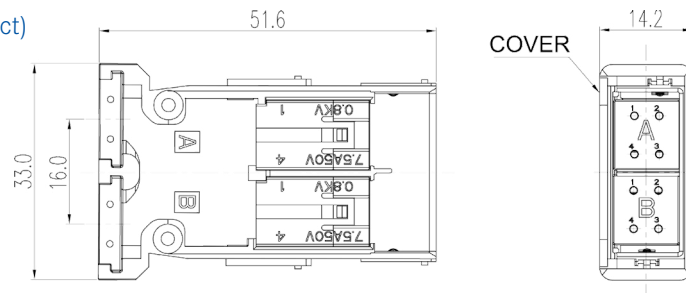
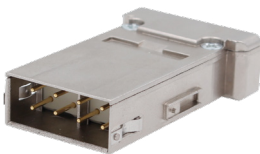
ASRCMM420SCGLC



### WITHOUT EARRING CLIP

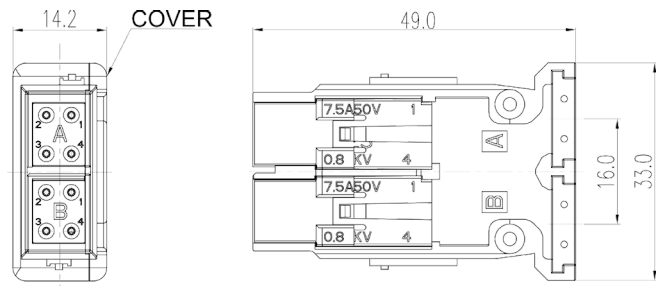
2 x 4 (#20) Receptacle without earring clip (Male contact)

ASRCFM420PCLC



2 x 4 (#20) Plug without earring clip (Female contact)

ASRCMM420SCLC



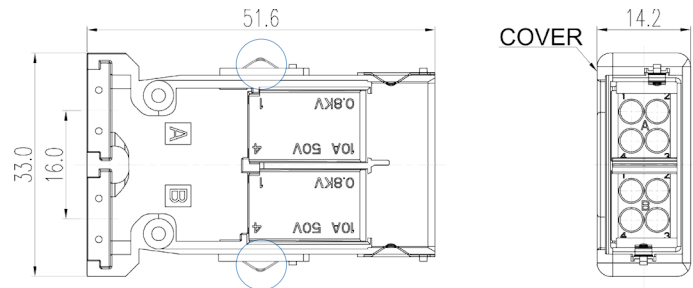
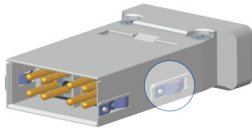
Note: contacts need to be ordered separately

## MEGABIT 2 x 4 (#16)

### WITH EARRING CLIP

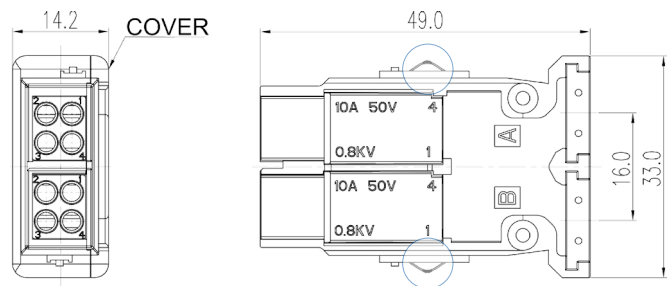
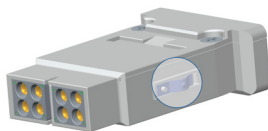
2 x 4 (#16) Receptacle with earring clip (Male contact)

ASRCFM416PCGLC



2 x 4 (#16) Plug with earring clip (Female contact)

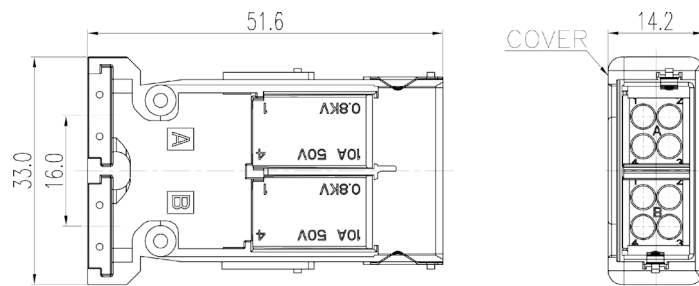
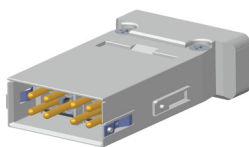
ASRCMM416SCGLC



### WITHOUT EARRING CLIP

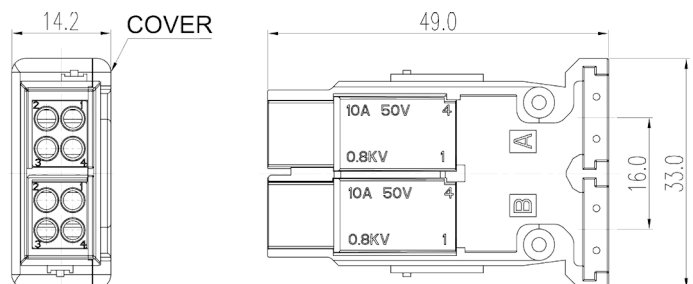
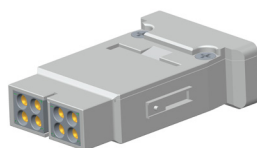
2 x 4 (#16) Receptacle without earring clip (Male contact)

ASRCFM416PCLC



2 x 4 (#16) Plug without earring clip (Female contact)

ASRCMM416SCLC

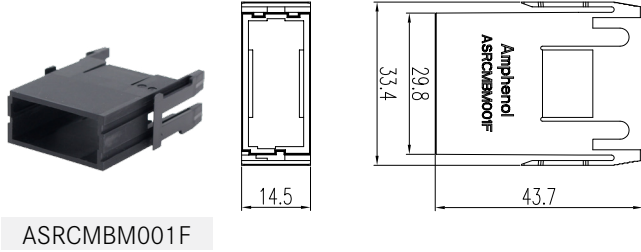


Note: contacts need to be ordered separately

## ATTACHEMENT

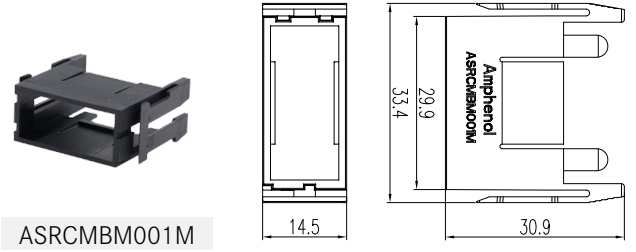
ORDER SEPARATELY

### MegaBit module (M)



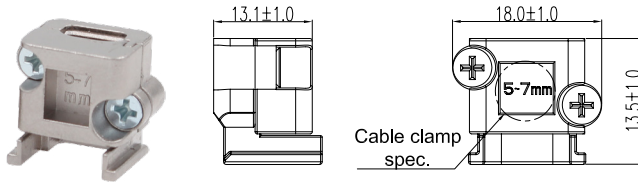
ASRCMBM001F

### MegaBit module (F)



ASRCMBM001M

## CABLE CLAMPS



Cable clamp spec.

| P/N          | Cable size      |
|--------------|-----------------|
| C42004400501 | 5.0 to 7.0 mm   |
| C42004400502 | 7.0 to 10.0 mm  |
| C42004400503 | 10.0 to 12.0 mm |

## TOOLS

| Contact size | Section of conductor         | Crimping tool | Extraction tool |
|--------------|------------------------------|---------------|-----------------|
| #16          | 0.2 to 2.0mm <sup>2</sup>    | M22520/1-01   | ASTP-R-16       |
| #20          | 0.09 to 0.52 mm <sup>2</sup> | M22520/1-01   | M81969/1-02     |

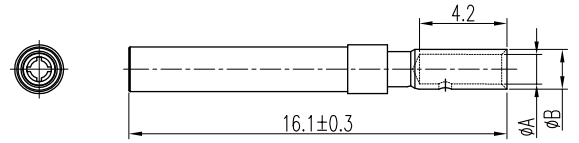
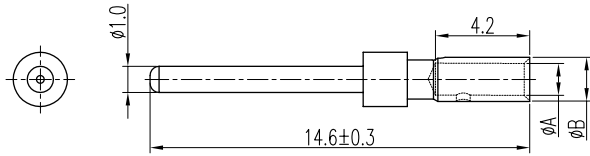
|                               |                                 |
|-------------------------------|---------------------------------|
| #16 Crimping tool M22520/1-01 | #16 Extraction tool ASTP-R-16   |
|                               |                                 |
| #20 Crimping tool M22520/1-01 | #20 Extraction tool M81969/1-02 |
|                               |                                 |



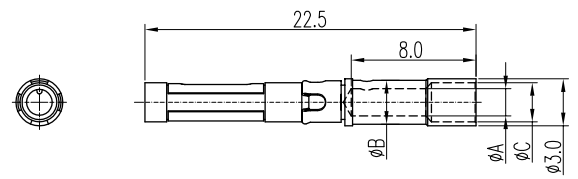
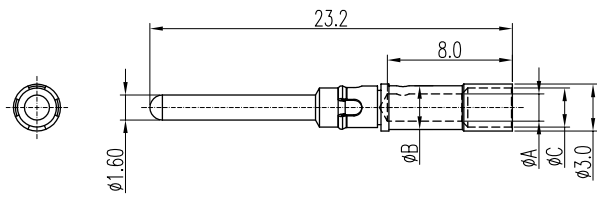
## CONTACTS

ORDER SEPARATELY

### #20



### #16



| Contact size | Part number  |                | Plating | ΦA mm | ΦB mm | Section of conductor         | Φcm |
|--------------|--------------|----------------|---------|-------|-------|------------------------------|-----|
|              | Pin contact  | Socket contact |         |       |       |                              |     |
| #20          | C42000482301 | C42000482201   | Gold    | 0.64  | 1.70  | 0.09 to 0.25 mm <sup>2</sup> | -   |
| #20          | C42000482302 | C42000482202   | Gold    | 0.88  | 1.70  | 0.13 to 0.33 mm <sup>2</sup> | -   |
| #20          | C42000482303 | C42000482203   | Gold    | 1.13  | 1.70  | 0.25 to 0.52 mm <sup>2</sup> | -   |
| #16          | C42000020201 | C420000482601  | Gold    | 1.2   | 1.8   | 0.2 to 0.5 mm <sup>2</sup>   | 1.8 |
| #16          | C42000020202 | C420000482602  | Gold    | 1.2   | 1.8   | 0.2 to 0.5 mm <sup>2</sup>   | 1.8 |
| #16          | C42000020203 | C420000482603  | Gold    | 1.75  | 2.8   | 0.5 to 1.3 mm <sup>2</sup>   | 2.8 |
| #16          | C42000020204 | C420000482604  | Gold    | 2.1   | 2.9   | 1.25 to 2.0 mm <sup>2</sup>  | 2.9 |

Amphenol PCD Shenzhen

Building 21  
1st Liao Keng Industrial Zone  
Shi Yan Street, Bao An District Shenzhen 518108  
China

Tel.: +86 755-8173-8000  
Fax: +86 755-8173-8180  
Email: [inquiry@amphenolpcd.com.cn](mailto:inquiry@amphenolpcd.com.cn)

[www.amphenolpcd.com.cn](http://www.amphenolpcd.com.cn)

Notes:

Amphenol PCD Shenzhen has made every effort to ensure that the information contained in this catalog is accurate at the time of publication. Specifications or information stated in this publication are subject to change without notice.

Amphenol PCD Shenzhen reserves the right to clarify this catalog.