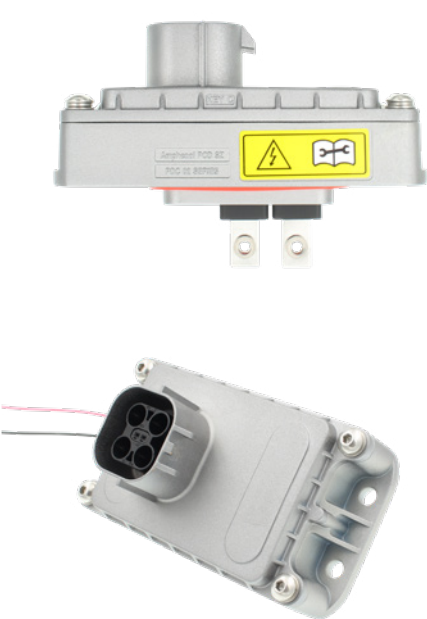


EXCEL|MATE PDC - TECHNICAL CHARACTERISTICS



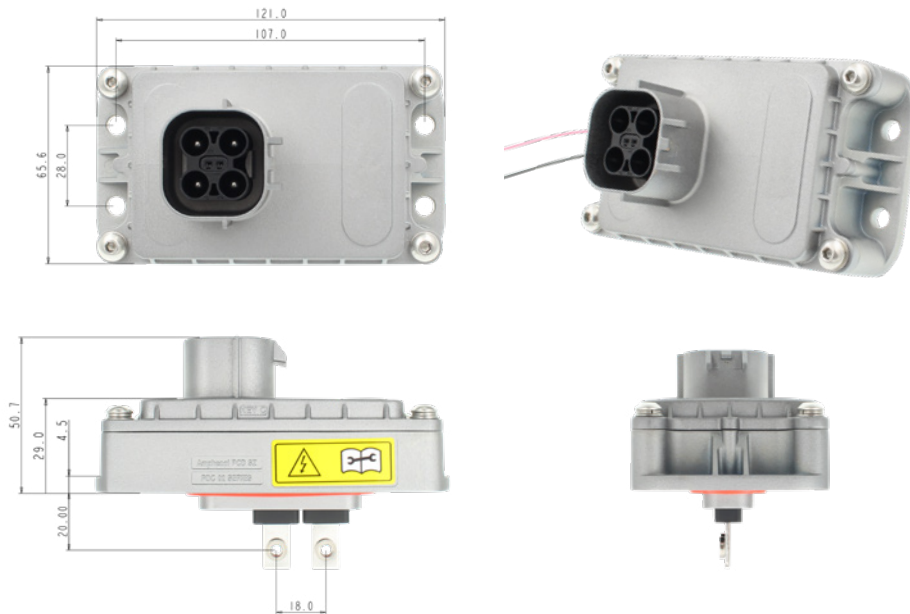
KEY FEATURE

Waterproof (unmated socket): IP67

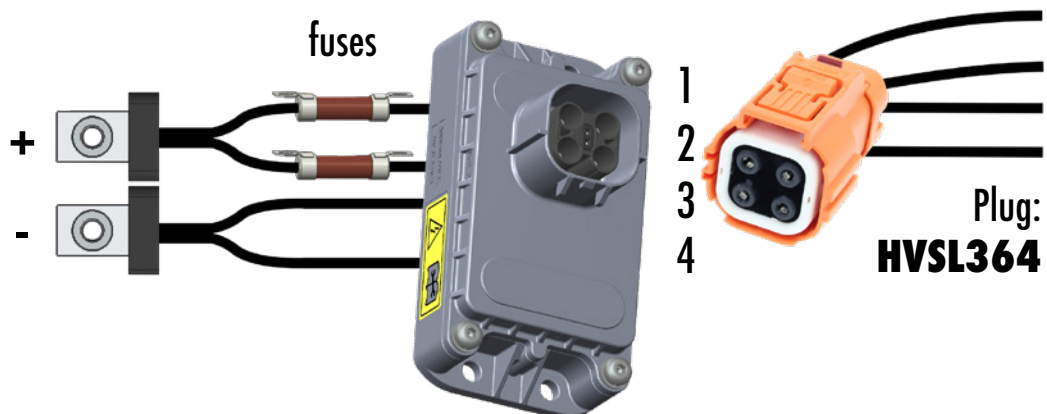
DESCRIPTION	
This Power Distribution Connector (PDC) finds its best use in the case where the PDU is already fully integrated into the Battery Pack. Without a PDC, we would need to entirely disassemble the Battery Pack to replace a blown fuse. However, using a PDC with removable fuses makes the replacement of blown fuses much more accessible and effortless.	
ELECTRICAL	
Fuse:	15A, 20A, 25A, 30A, 35A, 40A, 50A, 60A
Rated current:	8A to 32A
Rated voltage:	500V, 750V, 1000V
Wire range:	2.5, 4, and 6 mm ²
ENVIRONMENTAL	
Ambient temperature:	40 to 70°C
Waterproof (mated):	IP67, IP6K9K
Waterproof (unmated socket):	IP67
MATERIAL	
Housing:	Metallic



BATTERY PACK TO MAIN POWER DISTRIBUTION UNIT – HIGH POWER AUXILIARIES

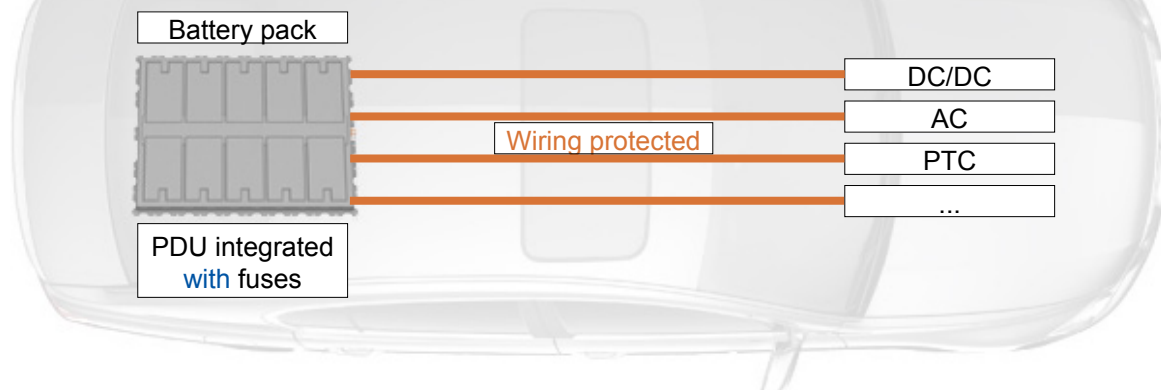


The PDC connector converts a **2-pin input** into a **4-pin output**.



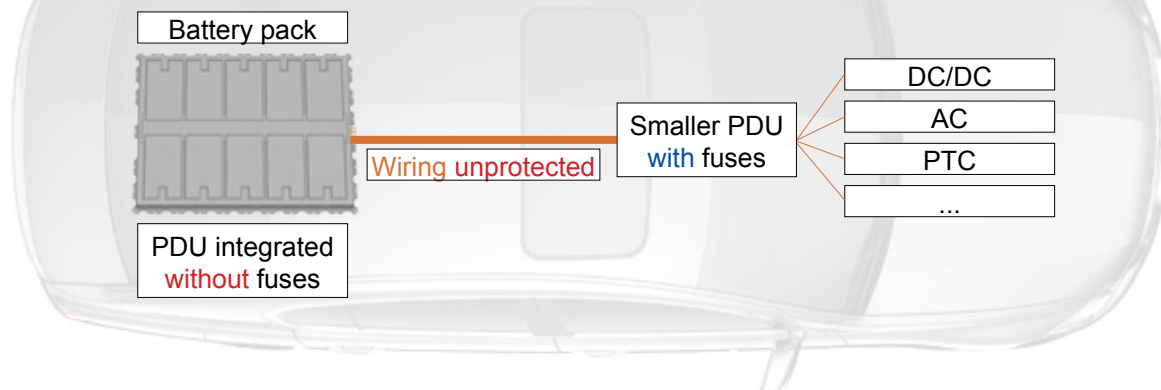
Basically, the PDC is a mini PDU-like type of connector!

Basic structure



This structure **safely** secures the wiring, but once a fuse blows, its replacement requires a **complex** disassembly of the whole battery pack.

Workaround structure



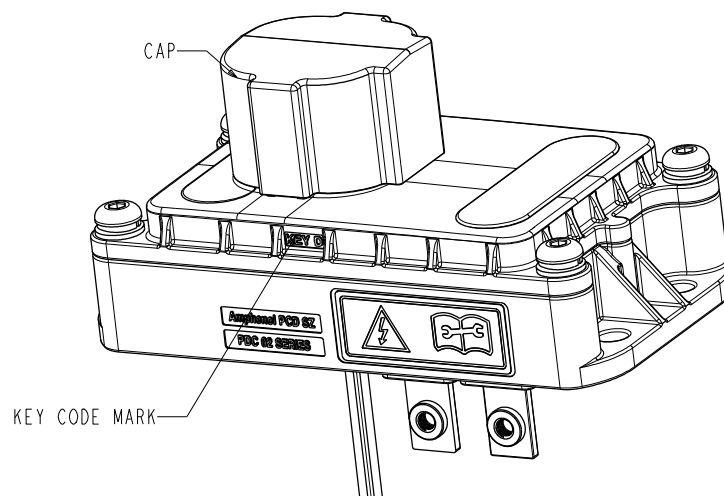
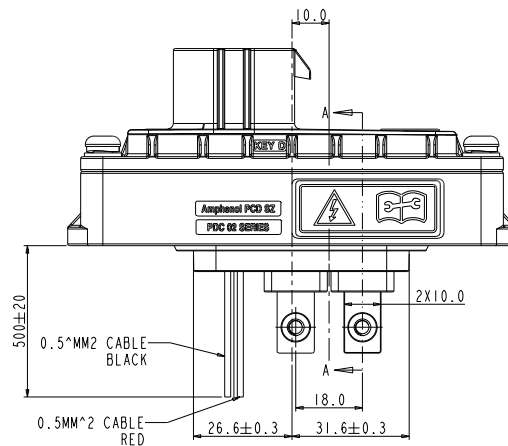
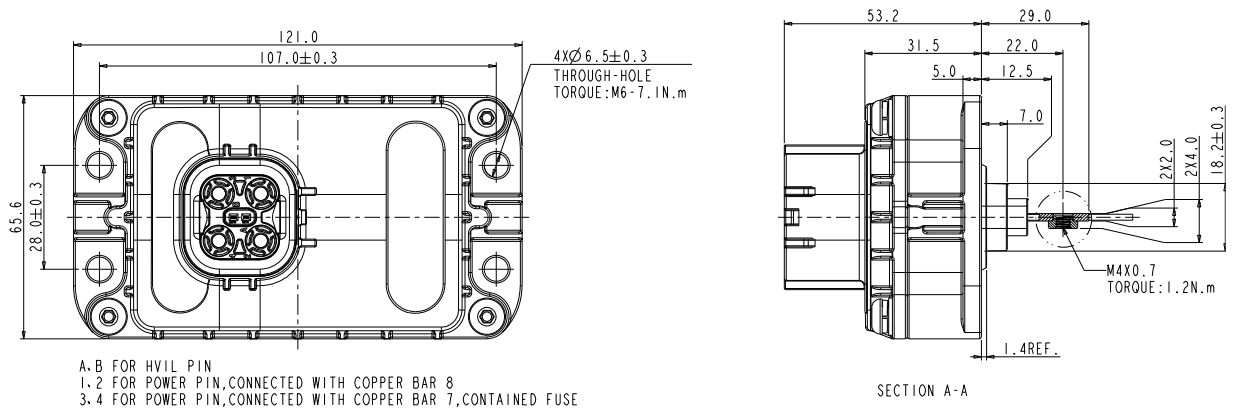
This workaround structure allows for an **easier** replacement of the fuses, which are placed in an external additional PDU. However, the wiring between the battery pack and this added PDU is **unprotected**.

Optimized structure



By adding a PDC connector to the battery pack, this optimized structure benefits from both a successfully protected wiring as well as an easy and effortless replacement of its fuses.

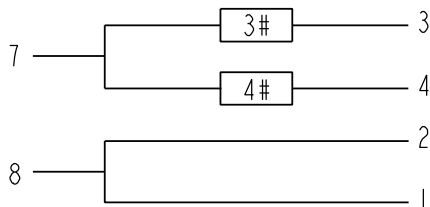
PRODUCT DIMENSIONS



HOW TO ORDER - EXCEL|MATE PDC

PDC 02	1	0	1	S	0	0	01
Key: 1: Matched HVSL 364 Key C 2: Matched HVSL 364 Key D							
HVIL: 0: Without HVIL 1: With HVIL							
Voltage: 1: 1000V DC 2: 750V DC 3: 500V DC							
Fuse brand: S: Sinofuse B: Bussmann							
Fuse at position #3: 0: Busbar 6: 15A 1: 30A 7: 20A 2: 35A 8: 25A 3: 40A 4: 50A 5: 60A							
Fuse at position #4: 0: Busbar 6: 15A 1: 30A 7: 20A 2: 35A 8: 25A 3: 40A 4: 50A 5: 60A							
Nut direction: 01: M4 nut, located below copper bar 02: M4 nut, located above copper bar							

- Remarks:
- 1. When a single fuse is loaded, the other hole can be loaded with copper bars.
 - 2. When two fuses are loaded, the same brand of fuses shall be selected.



BRAND OPTIONAL FUSE SPECIFICATION SHEET:		
RATING VOLTAGE	SINOFUSE	BUSSMANN
1000V	30A	35A
	40A	40A
	50A	50A
750V	15A	15A
	20A	20A
	25A	25A
	30A	30A
	40A	40A
	50A	50A
	N/A	60A
500V	N/A	15A
		20A
		25A
		30A
		40A
		50A
		60A

POSITIONS 3# AND 4# CAN CARRY BUS BAR OR FUSES

PDC CIRCUIT DIAGRAM