

Onanon's *Redi-Mate™ 1M Series* is a highly configurable metal push-pull connector. The push-pull latching system is simple and quick, yet safe and reliable, for frequent connection/disconnection through harsh environments. The ergonomic design has been field tested and is approved for Medical applications. Additional suitable markets include but are not limited to the automotive, aerospace and industrial industries. *Redi-Mate™* has a large selection of insert configurations (high-density low voltage, high voltage, coaxial, fluidic, and hybrid). *Redi-Mate* is backwards compatible to similar push-push pull connectors.



- **2-30 pin capacity**
- **Security of push-pull, self-latching system**
- **Customizable for reusable or single use applications**
- **Customizable finish and keying to prevent mismatching**
- **Easily add components such as EEPROMs, resistors and capacitors**

Specifications

Mechanical

Mating Type: Push Pull
Mating Cycles: 5,000 Max.
Mating Forces:
 Insertion: 8.3 lbf
 Removal: Locking

Electrical

Operating Voltage:
 270 V AC
Operating Current:
 3.5A

Environmental

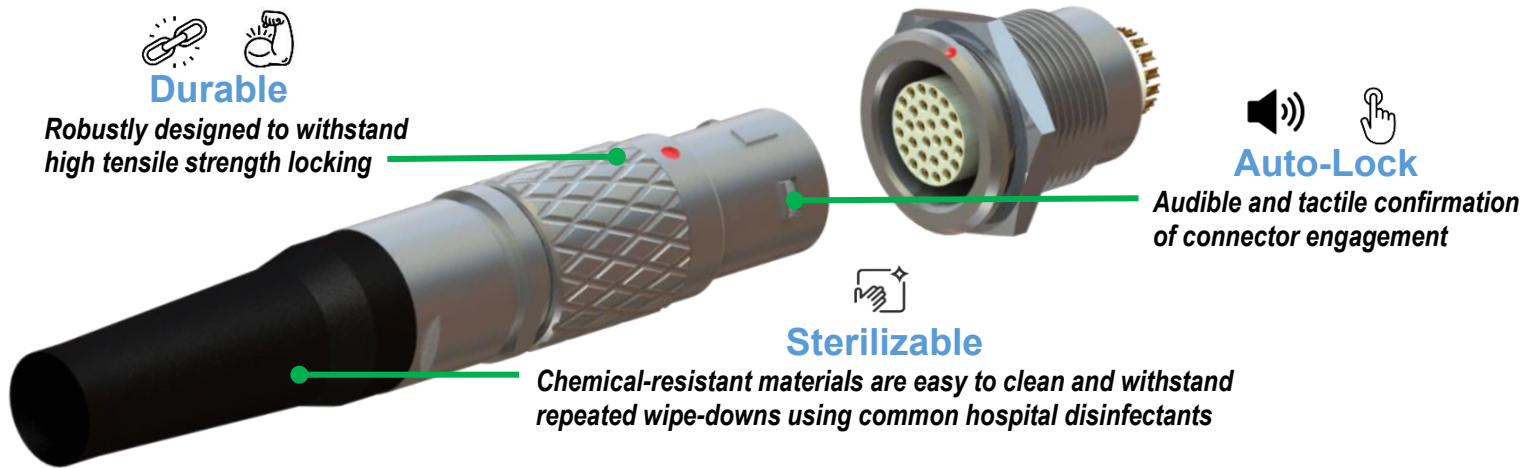
Sterilizable: Gamma, EtO
Chemical Resistance: Common Cleaning Solvents
Finger Safety: IEC 60601-1
Storage & Operating Temp:
 -55~125°C
Flammability: UL94V-0
IP Rating: IP50

Compatibility

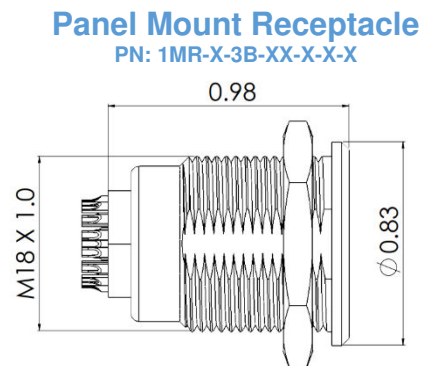
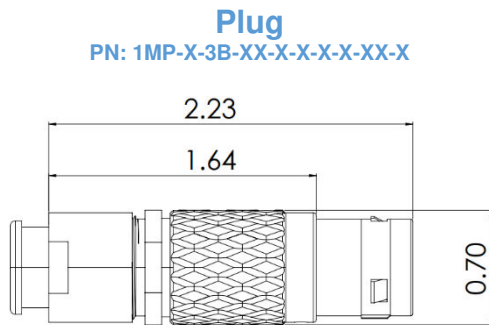
Contacts: 2-30 pins
Plug Cable Assembly
Accepted Wire Gauges: 38-26 AWG
Cable Jacket OD: 0.47" Max
Contact Termination: Solder

Redi-Mate has been tested and in production for numerous applications, such as High-Voltage 1.25kV, Low Voltage <12v, HF/RF, RFA, EHF, EMI, RFI, RFID, Wi-Fi, VF

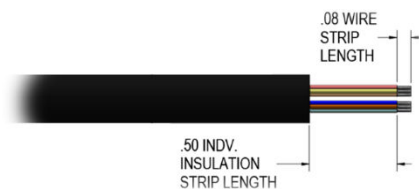
Onanon Connector Series Redi-Mate™ 1M Series



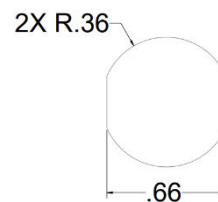
Dimensions



Recommended Cable Specifications



Recommended Panel Cutout



Units are in inches.
Contact Sales for unspecified dimensions.

Materials & Assembly

Plug Assembly

Housings: Chrome Plated Brass or Stainless Steel
Insulator Body: PPS or PEEK
Male Pins: Gold Plated Brass

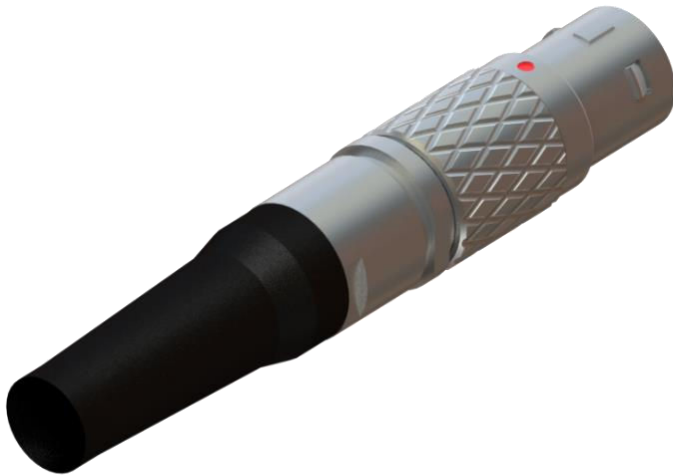
Required Assembly: Assemble connector body after terminating wires.

Panel Mount Receptacle

Housings: Chrome Plated Brass or Stainless Steel
Insulator Body: PPS or PEEK
Female Pins: Gold Plated Phosphor Bronze

Required Assembly: Solder wires, PCB or flex assembly.

Configurations & Ordering



1MP-X-3B-XX-X-X-X-XX-X

KEYING

G - 0°
A - 30°
B - 45°
C - 60°
D - 95°
E - 120°
F - 145°
J - 37.5°
K - 52.5°
L - 70°
Y - 126°

SERIES

NO. OF CONTACTS

02,03,04,05,06,07,08,09,10,
12,14,16,18,20,22,24,26,30

OUTER SHELL

C - BRASS FINISH CHROME
B - BRASS FINISH BLACK CHROME
S - STAINLESS STEEL

W - WITH BEND RELIEF
N - W/O BEND RELIEF

CABLE OD
SEE TABLE

COLLET TYPE

S - CABLE ϕ .15-.20
B - CABLE ϕ .24-.43

CONTACT TYPE
F - FEMALE SOLDER
M - MALE SOLDER

INSULATOR

S - PPS
K - PEEK

CABLE OD	CABLE DIAMETER	
	MIN	MAX
40	.13	.16
50	.18	.20
60	.20	.24
70	.24	.28
80	.28	.31
90	.32	.35
10	.36	.39
11	.40	.43
12	.43	.47



1MR-X-3B-XX-X-X-X

KEYING

G - 0°
A - 30°
B - 45°
C - 60°
D - 95°
E - 120°
F - 145°
J - 37.5°
K - 52.5°
L - 70°
Y - 126°

SERIES

NO. OF CONTACTS

02,03,04,05,06,07,08,09,10,
12,14,16,18,20,22,24,26,30

CONTACT TYPE

F - FEMALE SOLDER
M - MALE SOLDER
N - PRINT 180° FEMALE
D - PRINT 180° MALE
V - PRINT 90° MALE/FEMALE

INSULATOR

S - PPS
K - PEEK

OUTER SHELL

C - BRASS FINISH CHROME
B - BRASS FINISH BLACK CHROME
S - STAINLESS STEEL

Custom Options Available:

Reach out to our sales team about laser-engraved logos, personalized color options, high volume orders, and end-to-end custom cable assemblies, including our integrated SmartConnect™ capabilities.