

Onanon's *Redi-Mate™ 1P Series* is a highly configurable plastic push-pull connector. The push-pull latching system is simple and quick, yet safe and reliable for frequent connection/disconnection through harsh environments. The ergonomic design has been field tested and is approved for Medical applications. Additional suitable markets include but are not limited to the automotive, aerospace and industrial industries. *Redi-Mate™* has a large selection of insert configurations (high-density low voltage, high voltage, coaxial, fluidic, and hybrid). *Redi-Mate* is backwards compatible to similar push-push pull connectors.

- **2-14 pin capacity**
- **Security of Push-Pull, self-latching system**
- **Customizable for reusable or single use applications**
- **Customizable color, conical nuts and keying to prevent mismatching**
- **Easily add components such as EEPROMs, resistors and capacitors**



Specifications

Mechanical

Mating Type: Push Pull
Mating Cycles: 1,000 Min.
Mating Forces:
 Insertion: 2.2 lbf
 Removal: Locking

Electrical

Operating Voltage: 0.6~1.25kV DC
Operating Current: 2~10A

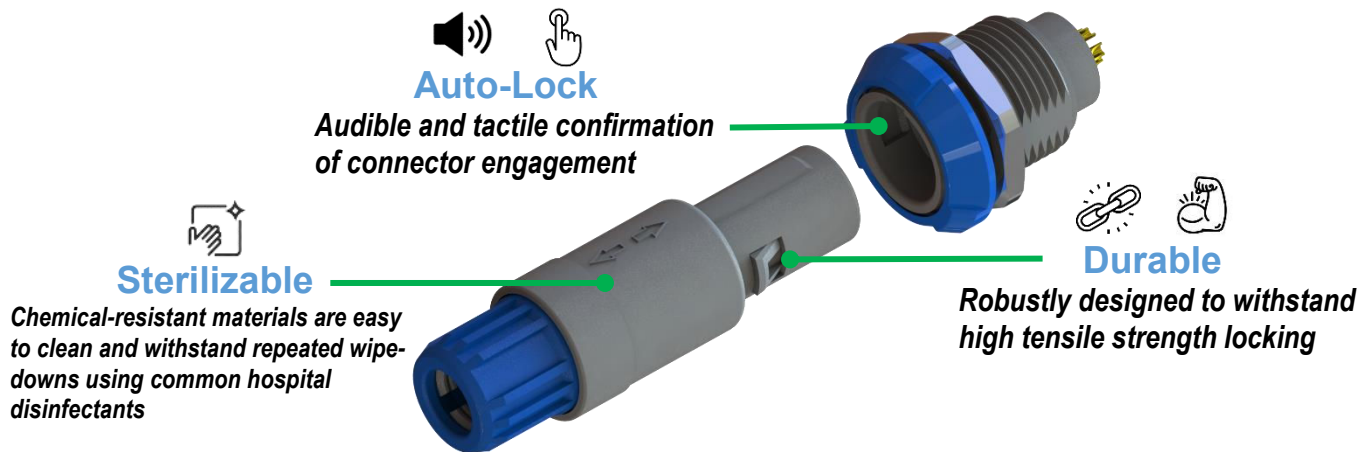
Environmental

Sterilizable: Gamma, EtO
Chemical Resistance: Common cleaning solvents
Finger Safety: IEC 60601-1
Storage & Operating Temp: -50~125°C
Flammability: UL94V-0
IP Rating: IP50

Compatibility

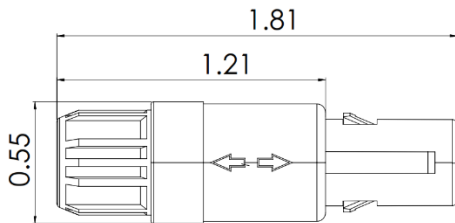
Contacts: 2-14 pins
Plug Cable Assembly
Accepted Wire Gauges: 26-50 AWG
Cable Jacket OD: 0.236" Max
Contact Termination: Solder

Onanon Connector Series Redi-Mate™ 1P Series

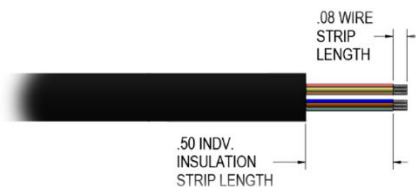


Dimensions

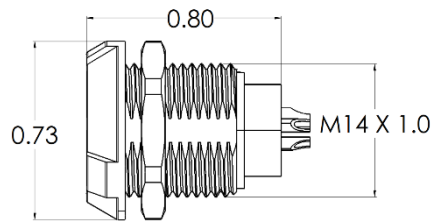
Plug
PN: 1PP-X-XX-X-X-X-XX-X



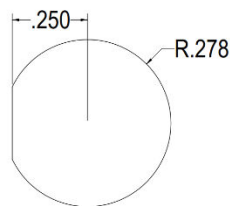
Recommended Cable Specifications



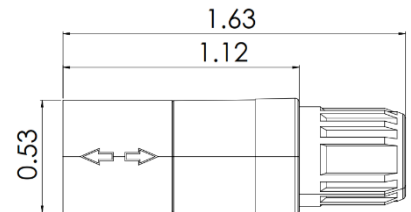
Panel Mount Receptacle
PN: 1PM-X-XX-X-X-X



Recommended Panel Cutout



In-Line Receptacle
PN: 1PI-X-XX-X-X-X-XX-X



Units are in inches.
Contact Sales for unspecified dimensions.

Materials & Assembly

Plug Assembly

Housings: Polycarbonate
Insulator Body: PPS Natural
Male Pins: Gold Plated Brass Alloy

Required Assembly: Assemble connector body after terminating wires.

Panel Mount Receptacle

Housings: Polycarbonate
Insulator Body: PPS Natural
Female Pins: Gold Plated Brass Alloy

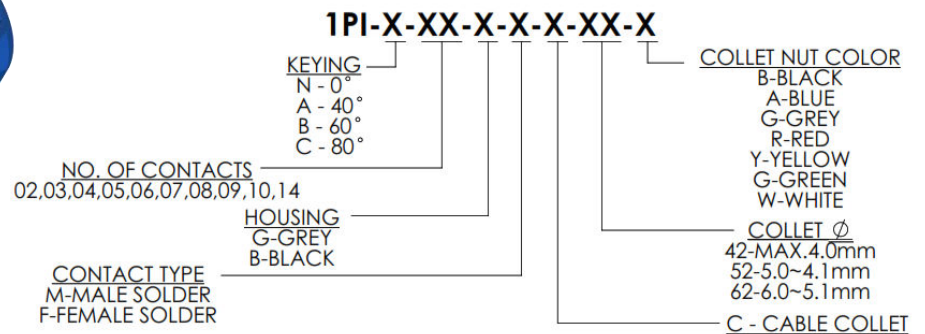
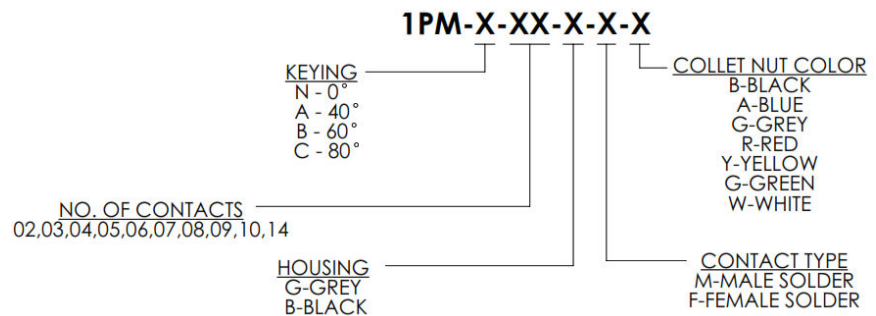
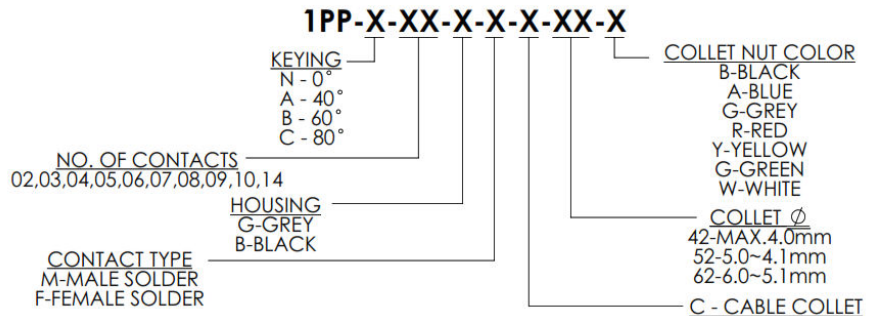
Required Assembly: Solder wires, PCB or flex assembly.

In-Line Receptacle

Housings: Polycarbonate
Insulator Body: PPS Natural
Female Pins: Gold Plated Brass Alloy

Required Assembly: Assemble connector body after terminating wires.

Configurations & Ordering



Custom Options Available:

Reach out to our sales team about laser-engraved logos, personalized color options, high volume orders, and end-to-end custom cable assemblies, including our integrated SmartConnect™ capabilities.