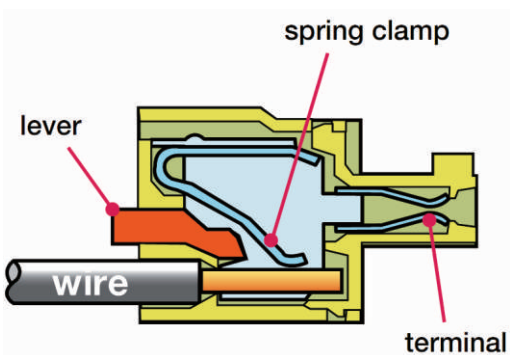
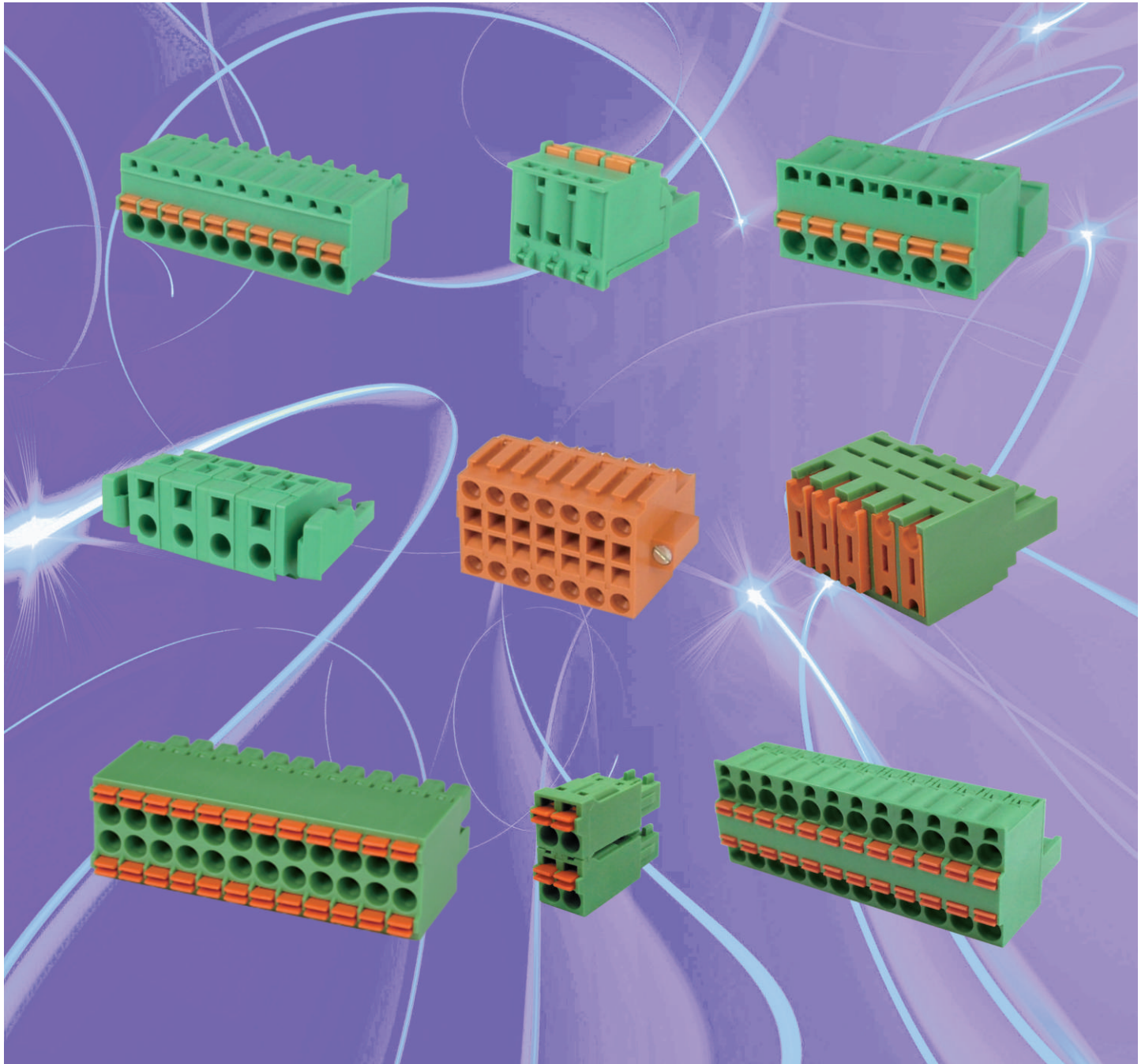
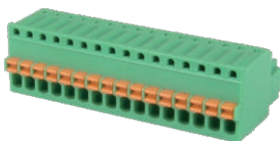


Spring Clamp Plugs for Pluggable System

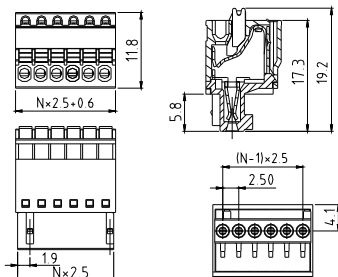


Pitch: 2.5, 3.5, 3.81, 5.0, 5.08, 6.35, 7.5, 7.62
Rated Voltage Range(cULus) :150V-300V
Rated Current Range(cULus): 4A-15A

HW

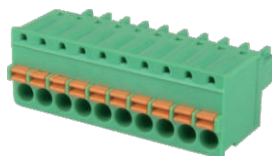


Pitch 2.5mm
Poles 2p~24p
HWxxB0500000G*
Number of poles

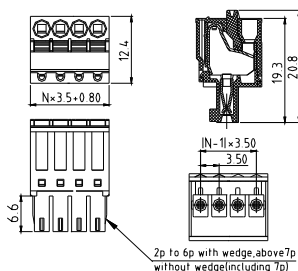


Electrical:	cULus
Voltage rating:	150V
Current rating:	4A
Wire range:	
Solid wire(AWG):	20-28
Stranded wire(AWG):	20-28
Wire strip length:	7-8mm
Withstanding Voltage:	1.3KV
Safety Approval:	

HW

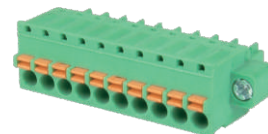


Pitch 3.5mm
Poles 2p~24p
HWxx10500000G*
Number of poles

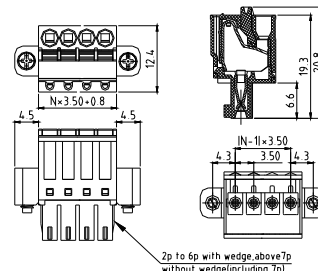


Electrical:	cULus
Voltage rating:	300V
Current rating:	8A
Wire range:	
Solid wire(AWG):	16-28
Stranded wire(AWG):	16-28
Wire strip length:	8-9mm
Withstanding Voltage:	1.6KV
Safety Approval:	

HW

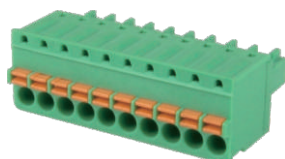


Pitch 3.5mm-W/F
Poles 2p~24p
HWxx10520000G*
Number of poles

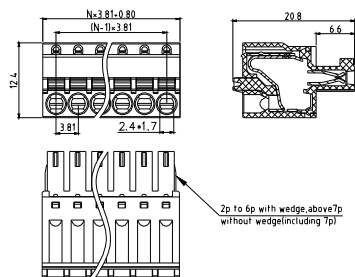


Electrical:	cULus
Voltage rating:	300V
Current rating:	8A
Wire range:	
Solid wire(AWG):	16-28
Stranded wire(AWG):	16-28
Wire strip length:	8-9mm
Withstanding Voltage:	1.6KV
Safety Approval:	

HW

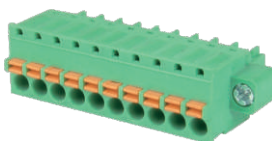


Pitch 3.81mm
Poles 2p~24p
HWxx30500000G*
Number of poles

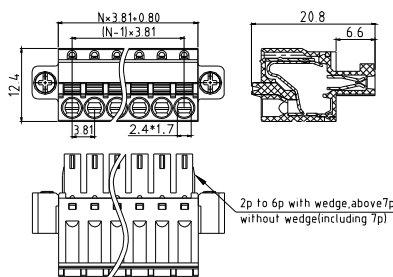


Electrical:	cULus
Voltage rating:	300V
Current rating:	8A
Wire range:	
Solid wire(AWG):	14-28
Stranded wire(AWG):	14-28
Wire strip length:	8-9mm
Withstanding Voltage:	1.6KV
Safety Approval:	

HW



Pitch 3.81mm-W/F
Poles 2p~24p
HWxx30520000G*
Number of poles

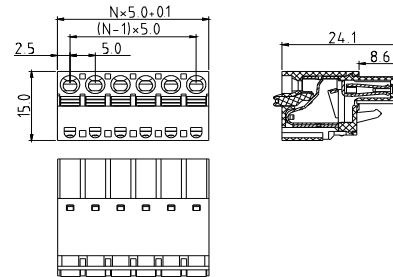


Electrical:	cULus
Voltage rating:	300V
Current rating:	8A
Wire range:	
Solid wire(AWG):	14-28
Stranded wire(AWG):	14-28
Wire strip length:	8-9mm
Withstanding Voltage:	1.6KV
Safety Approval:	

HW



Pitch 5.0mm
Contact on down side
Poles 2p~24p
HWxx70500000G*
Number of poles

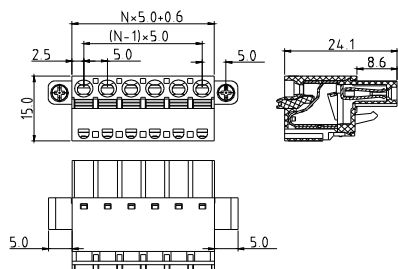


Electrical:	cULus
Voltage rating:	300V
Current rating:	10A
Wire range:	
Solid wire(AWG):	12-26
Stranded wire(AWG):	12-26
Wire strip length:	8-9mm
Withstanding Voltage:	1.6KV
Safety Approval:	

HW



Pitch 5.0mm-W/F
Contact on down side
Poles 2p~24p
HWxx70520000G*
Number of poles

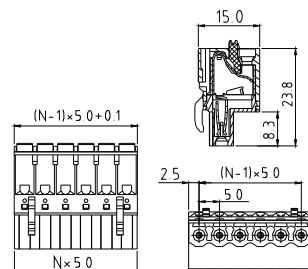


Electrical:	cULus
Voltage rating:	300V
Current rating:	10A
Wire range:	
Solid wire(AWG):	12-26
Stranded wire(AWG):	12-26
Wire strip length:	8-9mm
Withstanding Voltage:	1.6KV
Safety Approval:	cULus

HW



Pitch 5.0mm
Contact on up side
Poles 2p~24p
HWxx70510000G*
Number of poles

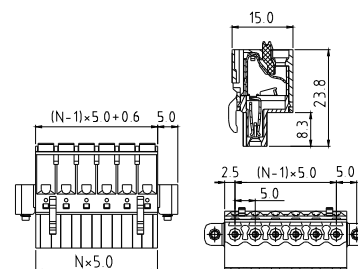


Electrical:	cULus
Voltage rating:	300V
Current rating:	10A
Wire range:	
Solid wire(AWG):	12-26
Stranded wire(AWG):	12-26
Wire strip length:	9-10mm
Withstanding Voltage:	1.6KV
Safety Approval:	cULus

HW

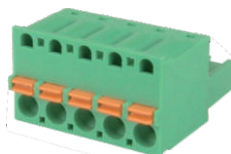


Pitch 5.0mm-W/F
Contact on up side
Poles 2p~24p
HWxx70530000G*
Number of poles

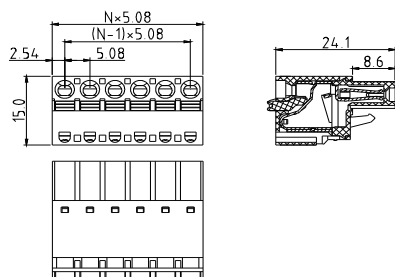


Electrical:	cULus
Voltage rating:	300V
Current rating:	10A
Wire range:	
Solid wire(AWG):	12-26
Stranded wire(AWG):	12-26
Wire strip length:	9-10mm
Withstanding Voltage:	1.6KV
Safety Approval:	cULus

HW



Pitch 5.08mm
Contact on down side
Poles 2p~24p
HWxx50520000G*
Number of poles

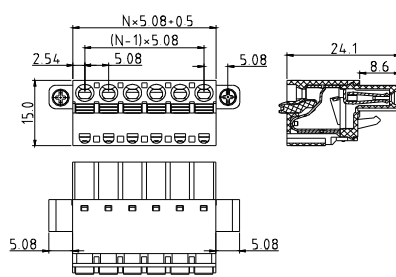


Electrical:	cULus
Voltage rating:	300V
Current rating:	10A
Wire range:	
Solid wire(AWG):	12-26
Stranded wire(AWG):	12-26
Wire strip length:	8-9mm
Withstanding Voltage:	1.6KV
Safety Approval:	cULus

HW



Pitch 5.08mm-W/F
Contact on down side
Poles 2p~24p
HWxx50520000G*
Number of poles

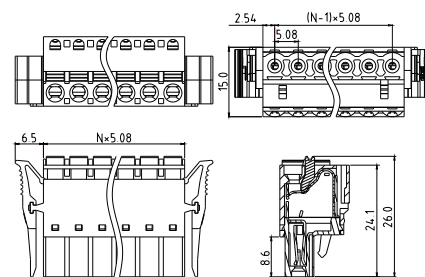


Electrical:	cULus
Voltage rating:	300V
Current rating:	10A
Wire range:	
Solid wire(AWG):	12-26
Stranded wire(AWG):	12-26
Wire strip length:	8-9mm
Withstanding Voltage:	1.6KV
Safety Approval:	cULus

HW



Pitch 5.08mm-W/latch
Contact on down side
Poles 2p~24p
HWxx50560000G*
Number of poles

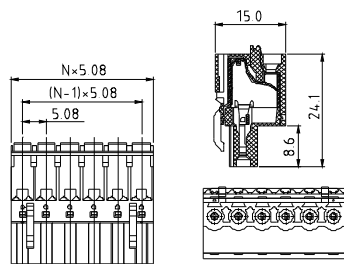


Electrical:	cULus
Voltage rating:	300V
Current rating:	10A
Wire range:	
Solid wire(AWG):	12-26
Stranded wire(AWG):	12-26
Wire strip length:	8-9mm
Withstanding Voltage:	1.6KV
Safety Approval:	cULus

HW



Pitch 5.08mm
Contact on up side
Poles 2p~24p
HWxx50510000G*
Number of poles

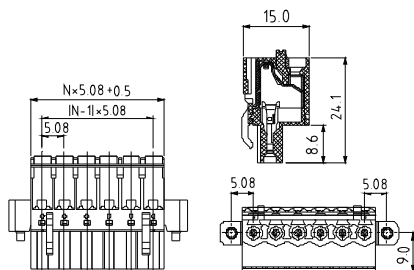


Electrical:	cULus
Voltage rating:	300V
Current rating:	10A
Wire range:	
Solid wire(AWG):	12-26
Stranded wire(AWG):	12-26
Wire strip length:	9-10mm
Withstanding Voltage:	1.6KV
Safety Approval:	cULus

HW



Pitch 5.08mm-W/F
Contact on up side
Poles 2p~24p
HWxx50530000G*
Number of poles

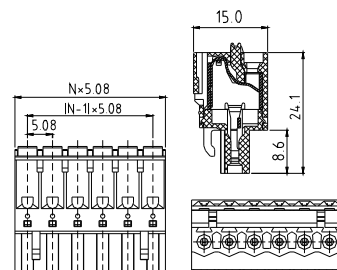


Electrical:	cULus
Voltage rating:	300V
Current rating:	10A
Wire range:	
Solid wire(AWG):	12-26
Stranded wire(AWG):	12-26
Wire strip length:	9-10mm
Withstanding Voltage:	1.6KV
Safety Approval:	cULus

HW



Pitch 5.08mm
Contact in the middle
Poles 2p~24p
HWxx50540000G*
Number of poles

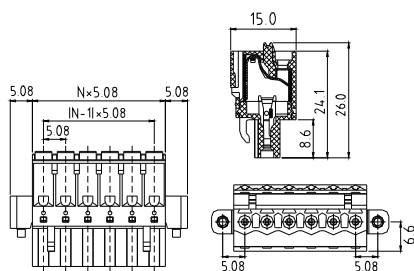


Electrical:	cULus
Voltage rating:	300V
Current rating:	10A
Wire range:	
Solid wire(AWG):	12-26
Stranded wire(AWG):	12-26
Wire strip length:	9-10mm
Withstanding Voltage:	1.6KV
Safety Approval:	cULus

HW



Pitch 5.08mm-W/F
Contact in the middle
Poles 2p~24p
HWxx50550000G*
Number of poles

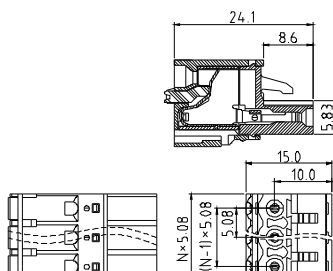


Electrical:	cULus
Voltage rating:	300V
Current rating:	10A
Wire range:	
Solid wire(AWG):	12-26
Stranded wire(AWG):	12-26
Wire strip length:	9-10mm
Withstanding Voltage:	1.6KV
Safety Approval:	cULus

HW

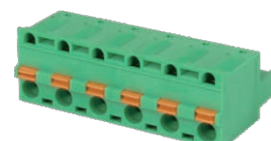


Pitch 5.08mm-Hook on back side
Contact on down side
Poles 2p~24p
HWxx5080F000G*
Number of poles

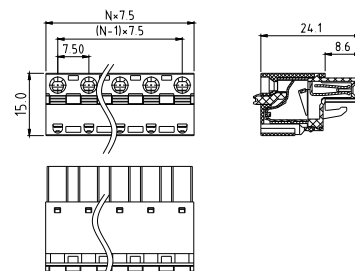


Electrical:	cULus
Voltage rating:	300V
Current rating:	10A
Wire range:	
Solid wire(AWG):	12-26
Stranded wire(AWG):	12-26
Wire strip length:	8-9mm
Withstanding Voltage:	1.6KV
Safety Approval:	cULus

HW



Pitch 7.5mm
Contact on down side
Poles 2p~16p
HWxxA0500000G*
Number of poles

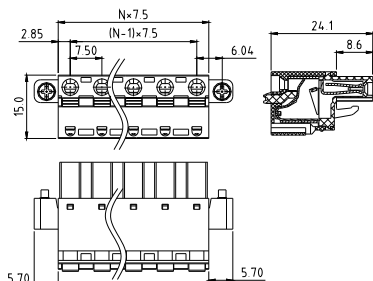


Electrical:	cULus
Voltage rating:	300V
Current rating:	10A
Wire range:	
Solid wire(AWG):	12-26
Stranded wire(AWG):	12-26
Wire strip length:	8-9mm
Withstanding Voltage:	1.6KV
Safety Approval:	cULus

HW

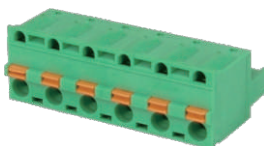


Pitch 7.5mm-W/F
Contact on down side
Poles 2p~16p
HWxxA0520000G*
Number of poles

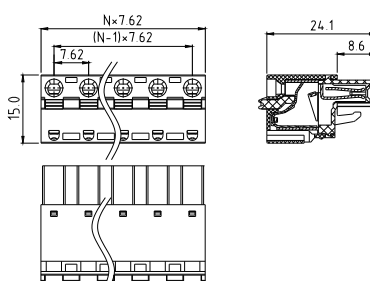


Electrical:	cULus
Voltage rating:	300V
Current rating:	10A
Wire range:	
Solid wire(AWG):	12-26
Stranded wire(AWG):	12-26
Wire strip length:	8-9mm
Withstanding Voltage:	1.6KV
Safety Approval:	cULus

HW



Pitch 7.62mm
Contact on down side
Poles 2p~16p
HWxx00500000G*
Number of poles

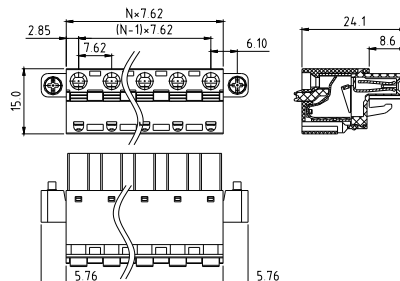


Electrical:	cULus
Voltage rating:	300V
Current rating:	10A
Wire range:	
Solid wire(AWG):	12-26
Stranded wire(AWG):	12-26
Wire strip length:	8-9mm
Withstanding Voltage:	1.6KV
Safety Approval:	cULus

HW

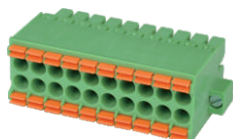


Pitch 7.62mm-W/F
Contact on down side
Poles 2p~16p
HWxx00520000G*
Number of poles

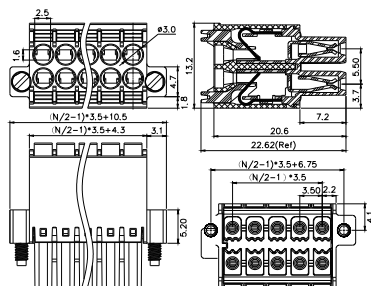


Electrical:	cULus
Voltage rating:	300V
Current rating:	10A
Wire range:	
Solid wire(AWG):	12-26
Stranded wire(AWG):	12-26
Wire strip length:	8-9mm
Withstanding Voltage:	1.6KV
Safety Approval:	cULus

NL

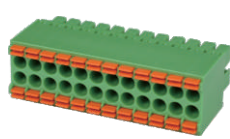


Pitch 3.5mm(With flange)
Poles 2*2p~2*24p
NLxx1051xxxxG*
Number of poles

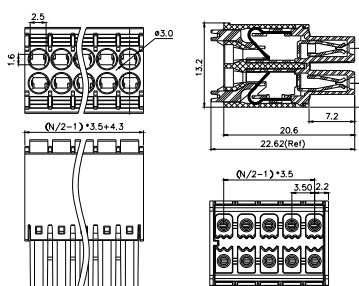


Electrical:	cULus
Voltage rating:	300V
Current rating:	5.5A
Wire range:	
Solid wire(AWG):	16-24
Stranded wire(AWG):	16-24
Wire strip length:	9-10mm
Withstanding Voltage:	1.6KV
Safety Approval:	cULus

NL

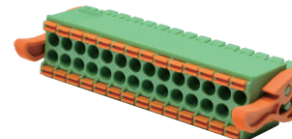


Pitch 3.5mm(W/O flange)
Poles 2*2p~2*24p
NLxx1052xxxxG*
Number of poles

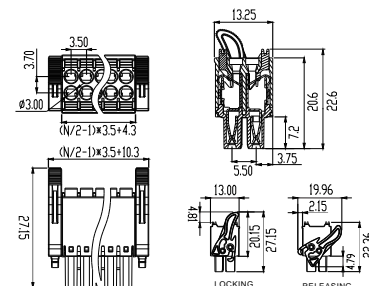


Electrical:	cULus
Voltage rating:	300V
Current rating:	5.5A
Wire range:	
Solid wire(AWG):	16-24
Stranded wire(AWG):	16-24
Wire strip length:	9-10mm
Withstanding Voltage:	1.6KV
Safety Approval:	cULus

NL

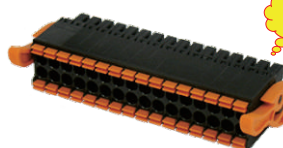


Pitch 3.5mm
With operating lever
Poles 2*2p~2*14p
NLxx1153xxxxG*
Number of poles



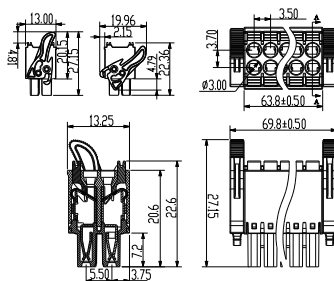
Electrical:	cULus
Voltage rating:	300V
Current rating:	8A
Wire range:	
Solid wire(AWG):	16-24
Stranded wire(AWG):	16-24
Wire strip length:	9-10mm
Withstanding Voltage:	1.6KV
Safety Approval:	cULus

NL



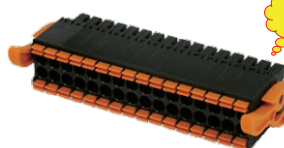
NEW

Pitch 3.5mm
With operating lever
Poles 2*18p
NL3610030000G*
Number of poles



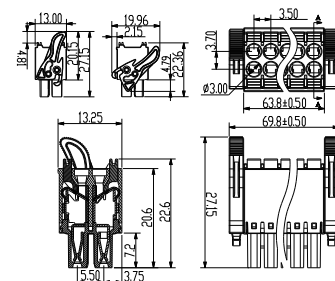
Electrical:	cULus
Voltage rating:	300V
Current rating:	5.5A
Wire range:	
Solid wire(AWG):	16-24
Stranded wire(AWG):	16-24
Wire strip length:	9-10mm
Withstanding Voltage:	1.6KV
Safety Approval:	cULus

NL



NEW

Pitch 3.5mm
With operating lever
Poles 2*18p
NL3611030000G*
Number of poles

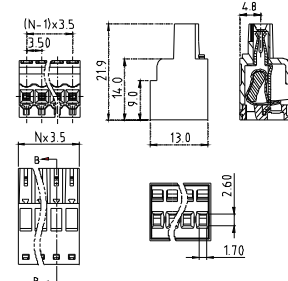


Electrical:	cULus
Voltage rating:	300V
Current rating:	8A
Wire range:	
Solid wire(AWG):	16-24
Stranded wire(AWG):	16-24
Wire strip length:	9-10mm
Withstanding Voltage:	1.6KV
Safety Approval:	cULus

HN



Pitch 3.5mm-W/O flange
Poles 2~24p
HNxx10300000G*
Number of poles

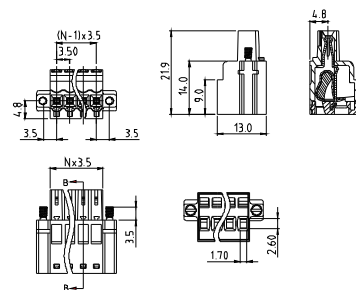


Electrical:	cULus
Voltage rating:	300V
Current rating:	10A
Wire range:	
Solid wire(AWG):	14-26
Stranded wire(AWG):	14-26
Wire strip length:	10-11mm
Withstanding Voltage:	1.6KV
Safety Approval:	cULus

HN

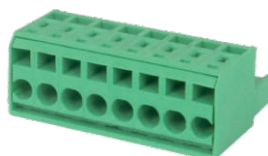


Pitch 3.5mm-W/flange
Poles 2~24p
HNxx10320000G*
Number of poles

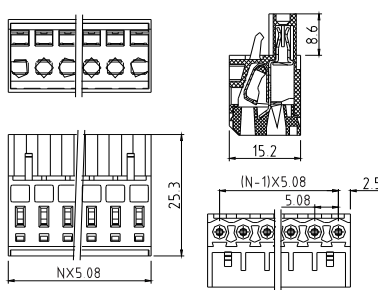


Electrical:	cULus
Voltage rating:	300V
Current rating:	10A
Wire range:	
Solid wire(AWG):	14-26
Stranded wire(AWG):	14-26
Wire strip length:	10-11mm
Withstanding Voltage:	1.6KV
Safety Approval:	cULus

HN

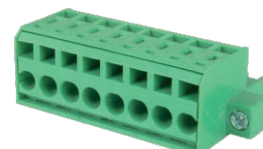


Pitch 5.08mm
Poles 2p~24p
HNxx50500000G*
Number of poles

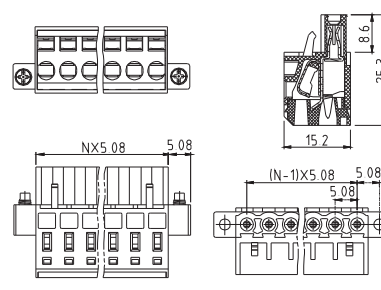


Electrical:	cULus
Voltage rating:	300V
Current rating:	10A
Wire range:	
Solid wire(AWG):	12-26
Stranded wire(AWG):	14-26
Wire strip length:	9-10mm
Withstanding Voltage:	1.6KV
Safety Approval:	cULus

HN



Pitch 5.08mm-W/F
Poles 2p~24p
HNxx50520000G*
Number of poles

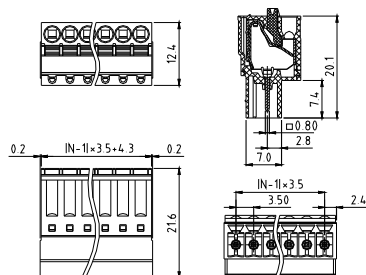


Electrical:	cULus
Voltage rating:	300V
Current rating:	10A
Wire range:	
Solid wire(AWG):	12-26
Stranded wire(AWG):	14-26
Wire strip length:	9-10mm
Withstanding Voltage:	1.6KV
Safety Approval:	cULus

H5



Pitch 3.5mm
Poles 2p~24p
H5xx10500000G*
Number of poles

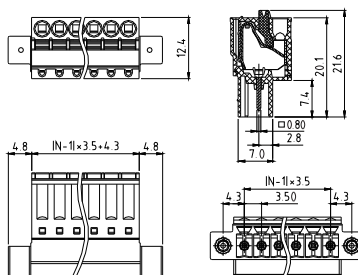


Electrical:	cULus
Voltage rating:	300V
Current rating:	4A
Wire range:	
Solid wire(AWG):	16-28
Stranded wire(AWG):	16-28
Wire strip length:	9-10mm
Withstanding Voltage:	1.6KV
Safety Approval:	cULus

H5



Pitch 3.5mm
Flange with nut
Poles 2p~24p
H5xx10520000G*
Number of poles

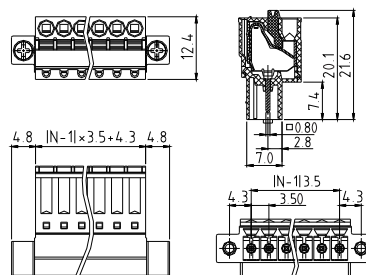


Electrical:	cULus
Voltage rating:	300V
Current rating:	4A
Wire range:	
Solid wire(AWG):	16-28
Stranded wire(AWG):	16-28
Wire strip length:	9-10mm
Withstanding Voltage:	1.6KV
Safety Approval:	cULus

H5



Pitch 3.5mm
Flange with screw
Poles 2p~24p
H5xx10510000G*
Number of poles

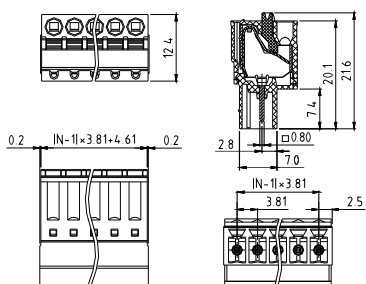


Electrical:	cULus
Voltage rating:	300V
Current rating:	4A
Wire range:	
Solid wire(AWG):	16-28
Stranded wire(AWG):	16-28
Wire strip length:	9-10mm
Withstanding Voltage:	1.6KV
Safety Approval:	cULus

H5



Pitch 3.81mm
Poles 2p~24p
H5xx30500000G*
Number of poles

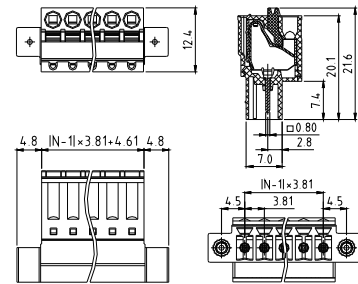


Electrical:	cULus
Voltage rating:	300V
Current rating:	4A
Wire range:	
Solid wire(AWG):	16-28
Stranded wire(AWG):	16-28
Wire strip length:	9-10mm
Withstanding Voltage:	1.6KV
Safety Approval:	cULus

H5



Pitch 3.81mm
Flange with nut
Poles 2p~24p
H5xx30520000G*
Number of poles

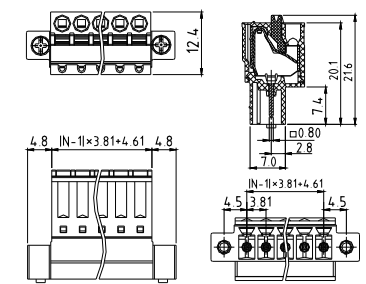


Electrical:	cULus
Voltage rating:	300V
Current rating:	4A
Wire range:	
Solid wire(AWG):	16-28
Stranded wire(AWG):	16-28
Wire strip length:	9-10mm
Withstanding Voltage:	1.6KV
Safety Approval:	cULus

H5



Pitch 3.81mm
Flange with screw
Poles 2p~24p
H5xx30510000G*
Number of poles

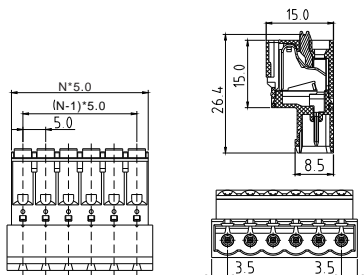


Electrical:	cULus
Voltage rating:	300V
Current rating:	4A
Wire range:	
Solid wire(AWG):	16-28
Stranded wire(AWG):	16-28
Wire strip length:	9-10mm
Withstanding Voltage:	1.6KV
Safety Approval:	cULus

H5



Pitch 5.0mm
Poles 2p~24p
H5xx70500000G*
Number of poles

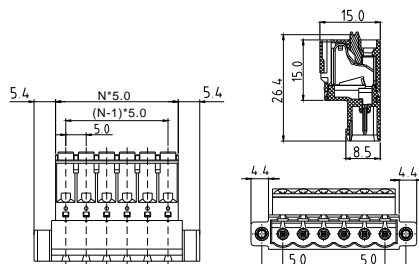


Electrical:	cULus
Voltage rating:	300V
Current rating:	10A
Wire range:	
Solid wire(AWG):	12-26
Stranded wire(AWG):	12-26
Wire strip length:	9-10mm
Withstanding Voltage:	1.6KV
Safety Approval:	cULus

H5



Pitch 5.0mm
Flange with nut
Poles 2p~24p
H5xx70520000G*
Number of poles

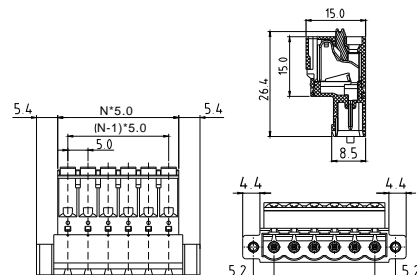


Electrical:	cULus
Voltage rating:	300V
Current rating:	10A
Wire range:	
Solid wire(AWG):	12-26
Stranded wire(AWG):	12-26
Wire strip length:	9-10mm
Withstanding Voltage:	1.6KV
Safety Approval:	cULus

H5



Pitch 5.0mm
Flange with screw
Poles 2p~24p
H5xx70510000G*
Number of poles

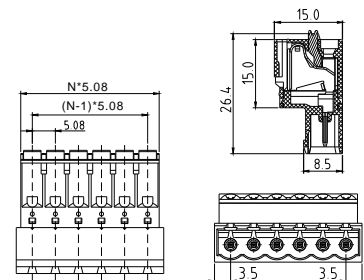


Electrical:	cULus
Voltage rating:	300V
Current rating:	10A
Wire range:	
Solid wire(AWG):	12-26
Stranded wire(AWG):	12-26
Wire strip length:	9-10mm
Withstanding Voltage:	1.6KV
Safety Approval:	cULus

H5

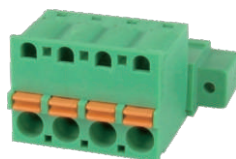


Pitch 5.08mm
Poles 2p~24p
H5xx50500000G*
Number of poles

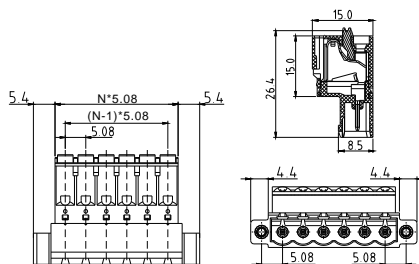


Electrical:	cULus
Voltage rating:	300V
Current rating:	10A
Wire range:	
Solid wire(AWG):	12-26
Stranded wire(AWG):	12-26
Wire strip length:	9-10mm
Withstanding Voltage:	1.6KV
Safety Approval:	cULus

H5



Pitch 5.08mm
Flange with nut
Poles 2p~24p
H5xx50520000G*
Number of poles

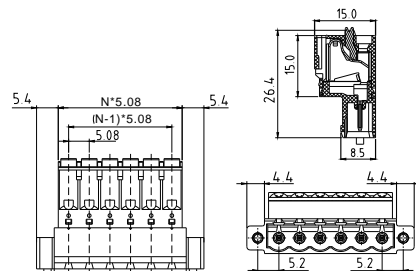


Electrical:	cULus
Voltage rating:	300V
Current rating:	10A
Wire range:	
Solid wire(AWG):	12-26
Stranded wire(AWG):	12-26
Wire strip length:	9-10mm
Withstanding Voltage:	1.6KV
Safety Approval:	cULus

H5



Pitch 5.08mm
Flange with screw
Poles 2p~24p
H5xx50510000G*
Number of poles



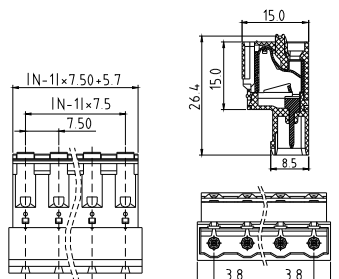
Electrical:	cULus
Voltage rating:	300V
Current rating:	10A
Wire range:	
Solid wire(AWG):	12-26
Stranded wire(AWG):	12-26
Wire strip length:	9-10mm
Withstanding Voltage:	1.6KV
Safety Approval:	cULus

G

H5



Pitch 7.5mm
Poles 2p~16p
H5xxA050000G*
Number of poles

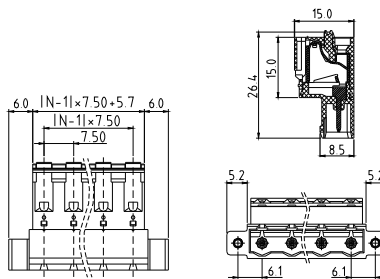


Electrical:	cULus
Voltage rating:	300V
Current rating:	10A
Wire range:	
Solid wire(AWG):	12-26
Stranded wire(AWG):	12-26
Wire strip length:	9-10mm
Withstanding Voltage:	1.6KV
Safety Approval:	

H5



Pitch 7.5mm
Flange with nut
Poles 2p~16p
H5xxA052000G*
Number of poles

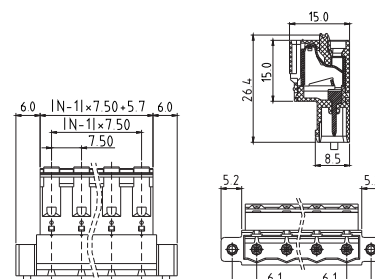


Electrical:	cULus
Voltage rating:	300V
Current rating:	10A
Wire range:	
Solid wire(AWG):	12-26
Stranded wire(AWG):	12-26
Wire strip length:	9-10mm
Withstanding Voltage:	1.6KV
Safety Approval:	

H5



Pitch 7.5mm
Flange with screw
Poles 2p~16p
H5xxA051000G*
Number of poles

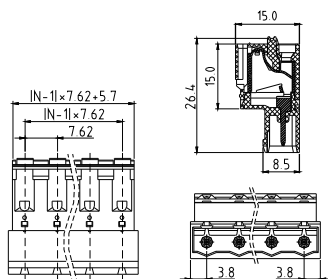


Electrical:	cULus
Voltage rating:	300V
Current rating:	10A
Wire range:	
Solid wire(AWG):	12-26
Stranded wire(AWG):	12-26
Wire strip length:	9-10mm
Withstanding Voltage:	1.6KV
Safety Approval:	

H5



Pitch 7.62mm
Poles 2p~16p
H5xx00500000G*
Number of poles

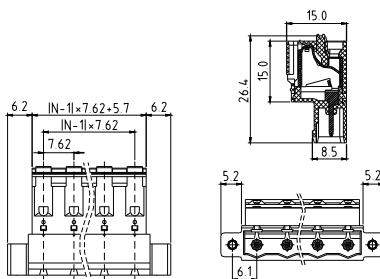


Electrical:	cULus
Voltage rating:	300V
Current rating:	10A
Wire range:	
Solid wire(AWG):	12-26
Stranded wire(AWG):	12-26
Wire strip length:	9-10mm
Withstanding Voltage:	1.6KV
Safety Approval:	

H5



Pitch 7.62mm
Flange with nut
Poles 2p~16p
H5xx00520000G*
Number of poles

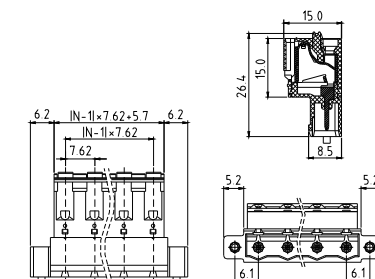


Electrical:	cULus
Voltage rating:	300V
Current rating:	10A
Wire range:	
Solid wire(AWG):	12-26
Stranded wire(AWG):	12-26
Wire strip length:	9-10mm
Withstanding Voltage:	1.6KV
Safety Approval:	

H5

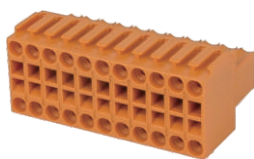


Pitch 7.62mm
Flange with screw
Poles 2p~16p
H5xx00510000G*
Number of poles

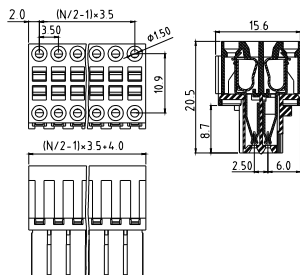


Electrical:	cULus
Voltage rating:	300V
Current rating:	10A
Wire range:	
Solid wire(AWG):	12-26
Stranded wire(AWG):	12-26
Wire strip length:	9-10mm
Withstanding Voltage:	1.6KV
Safety Approval:	

VW



Pitch 3.5mm-W/O flange
Poles 2*2p~2*24p
VWxx10300000G*
Number of poles

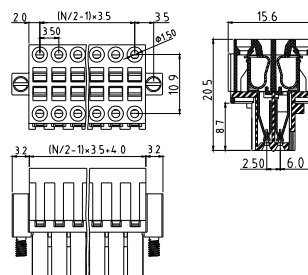


Electrical:	cULus
Voltage rating:	150V
Current rating:	7A
Wire range:	
Solid wire(AWG):	18-28
Stranded wire(AWG):	18-28
Wire strip length:	7-8mm
Withstanding Voltage:	1.6KV
Safety Approval:	cULus

VW



Pitch 3.5mm-W/flange
Poles 2*2p~2*24p
VWxx10310000G*
Number of poles

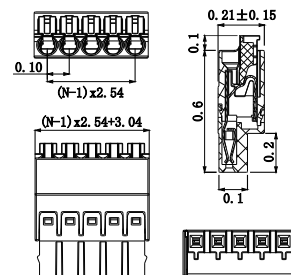


Electrical:	cULus
Voltage rating:	150V
Current rating:	7A
Wire range:	
Solid wire(AWG):	18-28
Stranded wire(AWG):	18-28
Wire strip length:	7-8mm
Withstanding Voltage:	1.6KV
Safety Approval:	cULus

KD

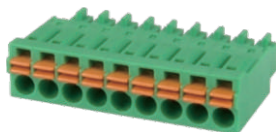


Pitch 2.54mm
Poles 2p~16p
KDxxB0xx0000G*
Number of poles

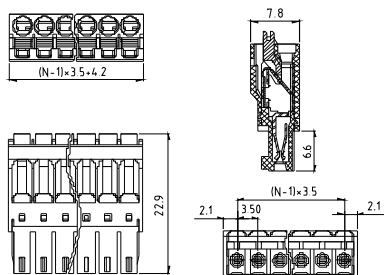


Electrical:	cULus
Voltage rating:	150V
Current rating:	6A
Wire range:	
Solid wire(AWG):	20-26
Stranded wire(AWG):	20-26
Wire strip length:	6-7mm
Withstanding Voltage:	1.3KV
Safety Approval:	cULus

KD

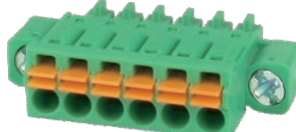


Pitch 3.5mm
Poles 2p~24p
KDxx10500000G*
Number of poles

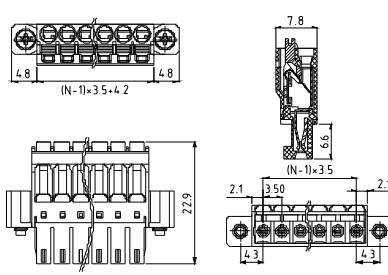


Electrical:	cULus
Voltage rating:	160V
Current rating:	5.5A
Wire range:	
Solid wire(AWG):	16-24
Stranded wire(AWG):	16-24
Wire strip length:	9-10mm
Withstanding Voltage:	1.32KV
Safety Approval:	cULus

KD

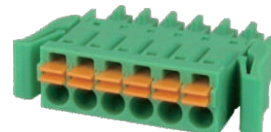


Pitch 3.5mm-W/F
Poles 2p~24p
KDxx10510000G*
Number of poles

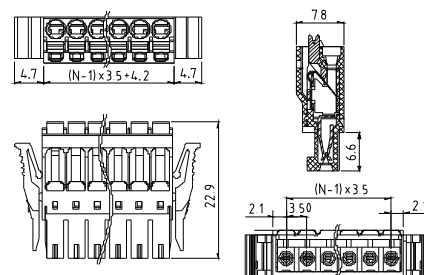


Electrical:	cULus
Voltage rating:	160V
Current rating:	5.5A
Wire range:	
Solid wire(AWG):	16-24
Stranded wire(AWG):	16-24
Wire strip length:	9-10mm
Withstanding Voltage:	1.32KV
Safety Approval:	cULus

KD



Pitch 3.5mm
With latch
Poles 2p~24p
KDxx10520000G*
Number of poles

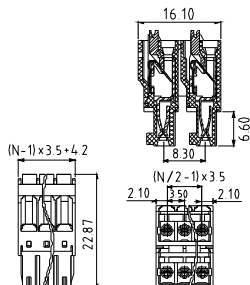


Electrical:	cULus
Voltage rating:	160V
Current rating:	5.5A
Wire range:	
Solid wire(AWG):	16-24
Stranded wire(AWG):	16-24
Wire strip length:	9-10mm
Withstanding Voltage:	1.32KV
Safety Approval:	cULus

KD

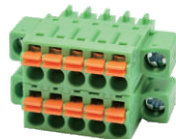


Pitch 3.5mm
W/O flange (Double level)
Poles 2*2p~2*24p
KDxx1050A000G*
Number of poles

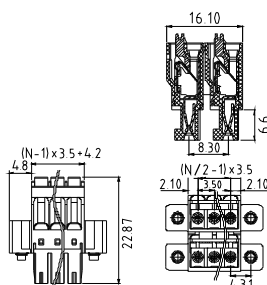


Electrical:	cULus
Voltage rating:	160V
Current rating:	5.5A
Wire range:	
Solid wire(AWG):	16-24
Stranded wire(AWG):	16-24
Wire strip length:	9-10mm
Withstanding Voltage:	1.32KV
Safety Approval:	cULus

KD



Pitch 3.5mm
W/flange (Double level)
Poles 2*2p~2*24p
KDxx1051A000G*
Number of poles

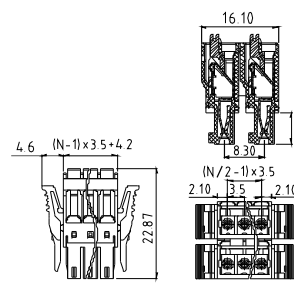


Electrical:	cULus
Voltage rating:	160V
Current rating:	5.5A
Wire range:	
Solid wire(AWG):	16-24
Stranded wire(AWG):	16-24
Wire strip length:	9-10mm
Withstanding Voltage:	1.32KV
Safety Approval:	cULus

KD

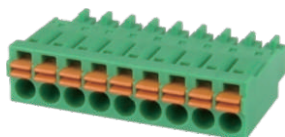


Pitch 3.5mm
With latch (Double level)
Poles 2*2p~2*24p
KDxx1052A000G*
Number of poles

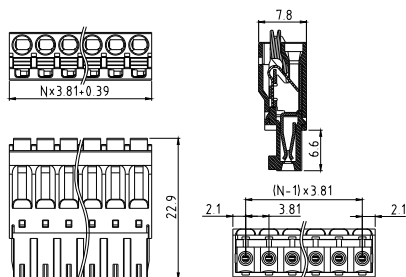


Electrical:	cULus
Voltage rating:	160V
Current rating:	5.5A
Wire range:	
Solid wire(AWG):	16-24
Stranded wire(AWG):	16-24
Wire strip length:	9-10mm
Withstanding Voltage:	1.32KV
Safety Approval:	cULus

KD

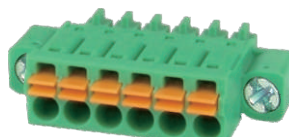


Pitch 3.81mm
Poles 2p~24p
KDxx30500000G*
Number of poles

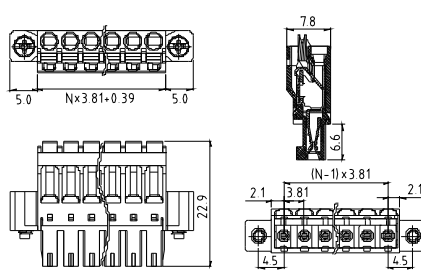


Electrical:	cULus
Voltage rating:	300V
Current rating:	5.5A
Wire range:	
Solid wire(AWG):	16-24
Stranded wire(AWG):	16-24
Wire strip length:	9-10mm
Withstanding Voltage:	1.6KV
Safety Approval:	cULus

KD

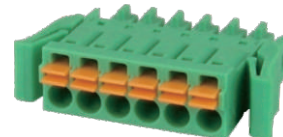


Pitch 3.81mm-W/flange
Poles 2p~24p
KDxx30510000G*
Number of poles

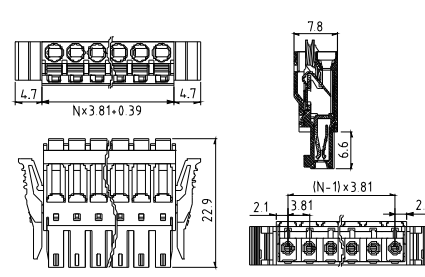


Electrical:	cULus
Voltage rating:	300V
Current rating:	5.5A
Wire range:	
Solid wire(AWG):	16-24
Stranded wire(AWG):	16-24
Wire strip length:	9-10mm
Withstanding Voltage:	1.6KV
Safety Approval:	cULus

KD



Pitch 3.81mm-With latch
Poles 2p~24p
KDxx30520000G*
Number of poles

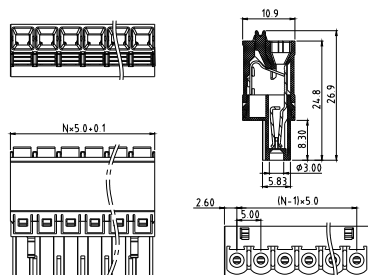


Electrical:	cULus
Voltage rating:	300V
Current rating:	5.5A
Wire range:	
Solid wire(AWG):	16-24
Stranded wire(AWG):	16-24
Wire strip length:	9-10mm
Withstanding Voltage:	1.6KV
Safety Approval:	cULus

KD



Pitch 5.0mm
Poles 2p~24p
KDxx7050000G*
Number of poles

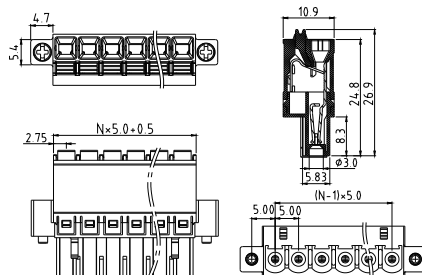


Electrical:	cULus
Voltage rating:	300V
Current rating:	12A
Wire range:	
Solid wire(AWG):	14-24
Stranded wire(AWG):	14-24
Wire strip length:	11-12mm
Withstanding Voltage:	1.6KV
Safety Approval:	cULus

KD



Pitch 5.0mm-W/flange
Poles 2p~24p
KDxx70510000G*
Number of poles

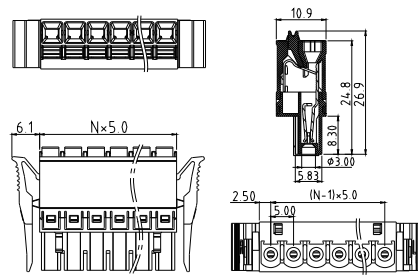


Electrical:	cULus
Voltage rating:	300V
Current rating:	12A
Wire range:	
Solid wire(AWG):	14-24
Stranded wire(AWG):	14-24
Wire strip length:	11-12mm
Withstanding Voltage:	1.6KV
Safety Approval:	cULus

KD



Pitch 5.0mm-With latch
Poles 2p~24p
KDxx70520000G*
Number of poles

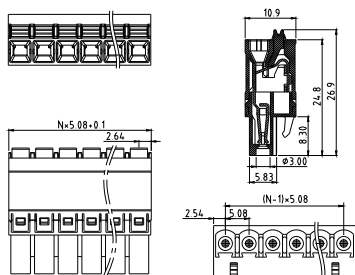


Electrical:	cULus
Voltage rating:	300V
Current rating:	12A
Wire range:	
Solid wire(AWG):	14-24
Stranded wire(AWG):	14-24
Wire strip length:	11-12mm
Withstanding Voltage:	1.6KV
Safety Approval:	cULus

KD



Pitch 5.08mm
Poles 2p~24p
KDxx50500000G*
Number of poles

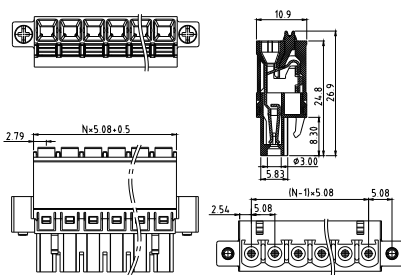


Electrical:	cULus
Voltage rating:	300V
Current rating:	12A
Wire range:	
Solid wire(AWG):	14-24
Stranded wire(AWG):	14-24
Wire strip length:	11-12mm
Withstanding Voltage:	1.6KV
Safety Approval:	cULus

KD



Pitch 5.08mm-W/flange
Poles 2p~24p
KDxx50510000G*
Number of poles

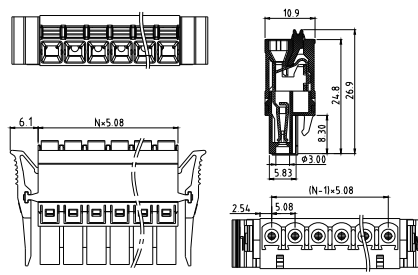


Electrical:	cULus
Voltage rating:	300V
Current rating:	12A
Wire range:	
Solid wire(AWG):	14-24
Stranded wire(AWG):	14-24
Wire strip length:	11-12mm
Withstanding Voltage:	1.6KV
Safety Approval:	cULus

KD



Pitch 5.08mm-With latch
Poles 2p~24p
KDxx50520000G*
Number of poles



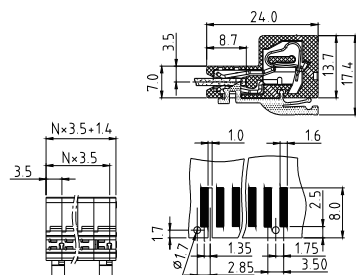
Electrical:	cULus
Voltage rating:	300V
Current rating:	12A
Wire range:	
Solid wire(AWG):	14-24
Stranded wire(AWG):	14-24
Wire strip length:	11-12mm
Withstanding Voltage:	1.6KV
Safety Approval:	cULus

G

ND



Pitch 3.5mm
Poles 2p~24p
NDxx10500000G*
Number of poles

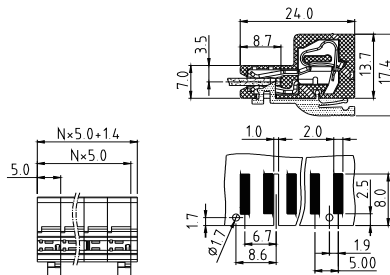


Electrical:	cULus
Voltage rating:	300V
Current rating:	10A
Wire range:	
Solid wire(AWG):	16-26
Stranded wire(AWG):	16-26
Wire strip length:	7-8mm
Withstanding Voltage:	1.6KV
Safety Approval:	(cULus) pending
With P.C.B thickness :	1.6±0.2mm

ND



Pitch 5.0mm
Poles 2p~24p
NDxx70500000G*
Number of poles

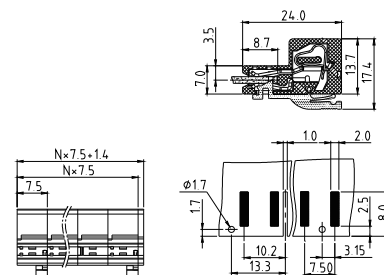


Electrical:	cULus
Voltage rating:	300V
Current rating:	10A
Wire range:	
Solid wire(AWG):	14-26
Stranded wire(AWG):	14-26
Wire strip length:	7-8mm
Withstanding Voltage:	1.6KV
Safety Approval:	cULus
With P.C.B thickness :	1.6±0.2mm

ND

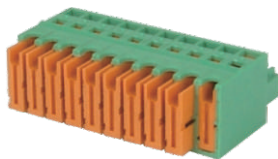


Pitch 7.5mm
Poles 2p~16p
NDxxA0500000G*
Number of poles

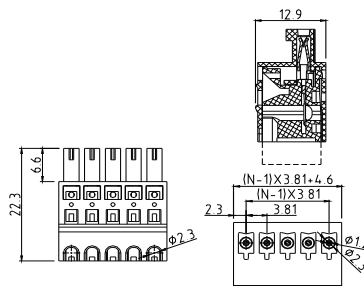


Electrical:	cULus
Voltage rating:	300V
Current rating:	10A
Wire range:	
Solid wire(AWG):	14-26
Stranded wire(AWG):	14-26
Wire strip length:	7-8mm
Withstanding Voltage:	1.6KV
Safety Approval:	cULus
With P.C.B thickness :	1.6±0.2mm

HP



Pitch 3.81mm
Poles 2p~24p
HPxx30500000G*
Number of poles

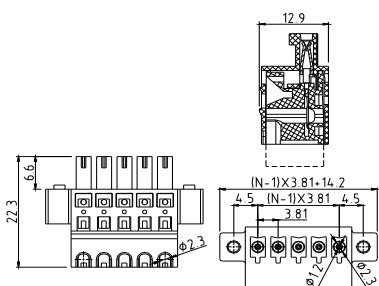


Electrical:	cULus
Voltage rating:	300V
Current rating:	5A
Wire range:	
Solid wire(AWG):	20-22
Stranded wire(AWG):	20-22
Wire strip length:	
Withstanding Voltage:	1.6KV
Safety Approval:	cULus

HP



Pitch 3.81mm-W/F
Poles 2p~24p
HPxx30520000G*
Number of poles

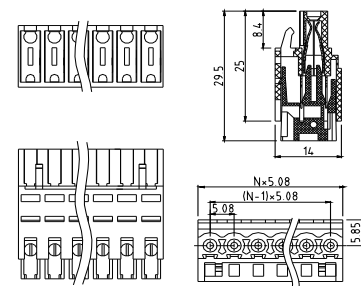


Electrical:	cULus
Voltage rating:	300V
Current rating:	5A
Wire range:	
Solid wire(AWG):	20-22
Stranded wire(AWG):	20-22
Wire strip length:	
Withstanding Voltage:	1.6KV
Safety Approval:	cULus

HP

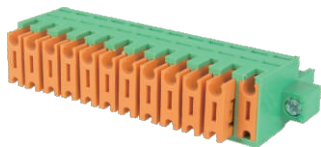


Pitch 5.08mm
Poles 2p~24p
HPxxA0500000G*
Number of poles

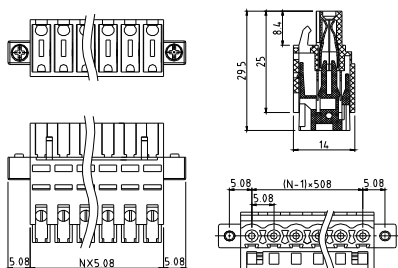


Electrical:	cULus
Voltage rating:	300V
Current rating:	7A
Wire range:	
Solid wire(AWG):	18-22
Stranded wire(AWG):	18-22
Wire strip length:	
Withstanding Voltage:	1.6KV
Safety Approval:	cULus

HP



Pitch 5.08mm-W/F
Poles 2p~24p
HPxx50520000G*
Number of poles

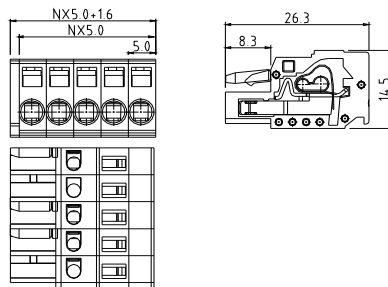


Electrical:	cULus
Voltage rating:	300V
Current rating:	7A
Wire range:	
Solid wire(AWG):	18-22
Stranded wire(AWG):	18-22
Wire strip length:	
Withstanding Voltage:	1.6KV
Safety Approval:	

HI



Pitch 5.0mm
With hook and pillar
Poles 2p~24p
HIxx00500000G*
Number of poles

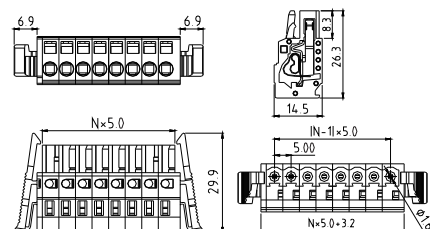


Electrical:	cULus
Voltage rating:	300V
Current rating:	15A
Wire range:	
Solid wire(AWG):	12-28
Stranded wire(AWG):	12-28
Wire strip length:	8-9mm
Withstanding Voltage:	1.6KV
Safety Approval:	

HI



Pitch 5.0mm
With latch
Poles 2p~24p
HIxx00530000G*
Number of poles

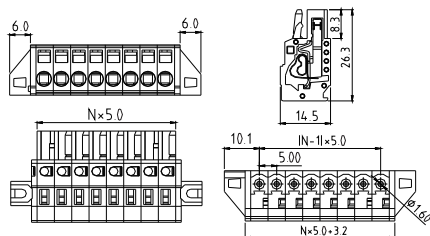


Electrical:	cULus
Voltage rating:	300V
Current rating:	15A
Wire range:	
Solid wire(AWG):	12-28
Stranded wire(AWG):	12-28
Wire strip length:	8-9mm
Withstanding Voltage:	1.6KV
Safety Approval:	

HI



Pitch 5.0mm
With flange
Poles 2p~24p
HIxx00520000G*
Number of poles

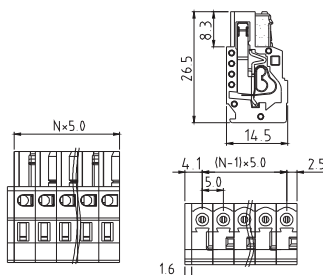


Electrical:	cULus
Voltage rating:	300V
Current rating:	15A
Wire range:	
Solid wire(AWG):	12-28
Stranded wire(AWG):	12-28
Wire strip length:	8-9mm
Withstanding Voltage:	1.6KV
Safety Approval:	

HI



Pitch 5.0mm
With hook, 100% protected against mismatching
Poles 2p~24p
HIxx01500000G*
Number of poles

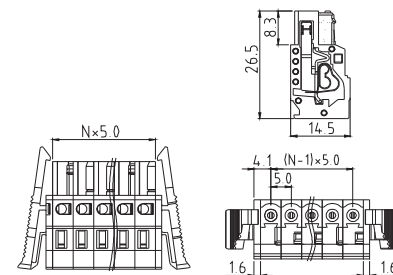


Electrical:	cULus
Voltage rating:	300V
Current rating:	8A
Wire range:	
Solid wire(AWG):	12-28
Stranded wire(AWG):	12-28
Wire strip length:	8-9mm
Withstanding Voltage:	1.6KV
Safety Approval:	() pending

HI



Pitch 5.0mm
With latch, 100% protected against mismatching
Poles 2p~24p
HIxx01530000G*
Number of poles

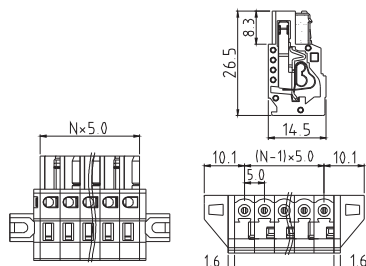


Electrical:	cULus
Voltage rating:	300V
Current rating:	8A
Wire range:	
Solid wire(AWG):	12-28
Stranded wire(AWG):	12-28
Wire strip length:	8-9mm
Withstanding Voltage:	1.6KV
Safety Approval:	() pending

HI



Pitch 5.0mm-W/F
With flange, 100% protected against mismatching
Poles 2p~24p
HIxx01520000G*
Number of poles

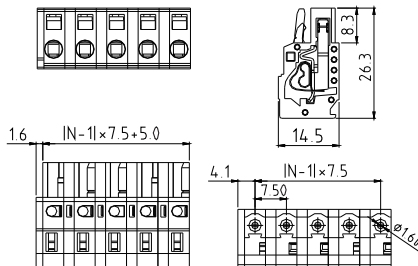


Electrical:	cULus
Voltage rating:	300V
Current rating:	8A
Wire range:	
Solid wire(AWG):	12-28
Stranded wire(AWG):	12-28
Wire strip length:	8-9mm
Withstanding Voltage:	1.6KV
Safety Approval:	(cULus) pending

HI



Pitch 7.5mm
With hook and pillar
Poles 2p~16p
HIxx20500000G*
Number of poles

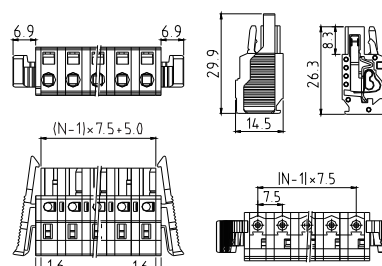


Electrical:	cULus
Voltage rating:	300V
Current rating:	15A
Wire range:	
Solid wire(AWG):	12-28
Stranded wire(AWG):	12-28
Wire strip length:	8-9mm
Withstanding Voltage:	1.6KV
Safety Approval:	(cULus) pending

HI

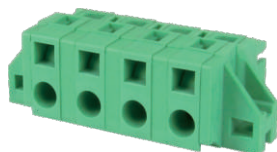


Pitch 7.5mm
With latch
Poles 2p~16p
HIxx20530000G*
Number of poles

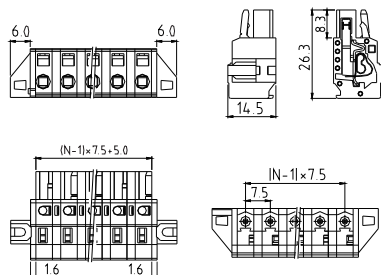


Electrical:	cULus
Voltage rating:	300V
Current rating:	15A
Wire range:	
Solid wire(AWG):	12-28
Stranded wire(AWG):	12-28
Wire strip length:	8-9mm
Withstanding Voltage:	1.6KV
Safety Approval:	(cULus) pending

HI

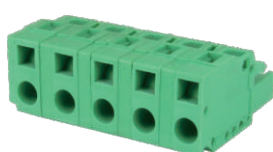


Pitch 7.5mm
With flange
Poles 2p~16p
HIxx20520000G*
Number of poles

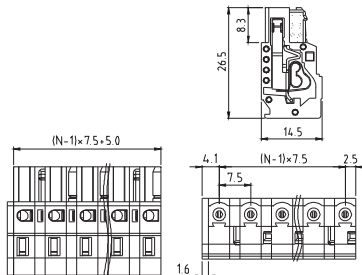


Electrical:	cULus
Voltage rating:	300V
Current rating:	15A
Wire range:	
Solid wire(AWG):	12-28
Stranded wire(AWG):	12-28
Wire strip length:	8-9mm
Withstanding Voltage:	1.6KV
Safety Approval:	(cULus) pending

HI



Pitch 7.5mm
With hook, 100% protected against mismatching
Poles 2p~16p
HIxx21500000G*
Number of poles

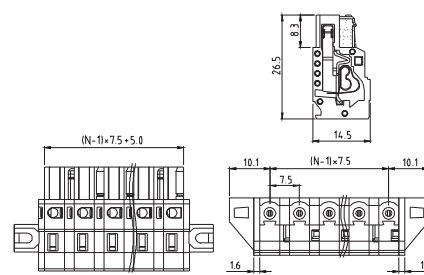


Electrical:	cULus
Voltage rating:	300V
Current rating:	8A
Wire range:	
Solid wire(AWG):	12-28
Stranded wire(AWG):	12-28
Wire strip length:	8-9mm
Withstanding Voltage:	1.6KV
Safety Approval:	(cULus) pending

HI



Pitch 7.5mm
With flange, 100% protected against mismatching
Poles 2p~16p
HIxx21520000G*
Number of poles

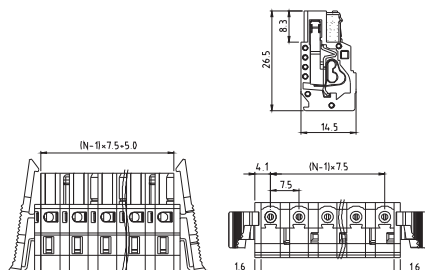


Electrical:	cULus
Voltage rating:	300V
Current rating:	8A
Wire range:	
Solid wire(AWG):	12-28
Stranded wire(AWG):	12-28
Wire strip length:	8-9mm
Withstanding Voltage:	1.6KV
Safety Approval:	(cULus) pending

HI



Pitch 7.5mm
With latch, 100% protected against mismatching
Poles 2p~16p
HIxx21530000G*
Number of poles

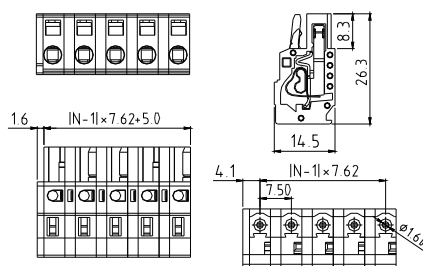


Electrical:	cULus
Voltage rating:	300V
Current rating:	8A
Wire range:	
Solid wire(AWG):	12-28
Stranded wire(AWG):	12-28
Wire strip length:	8-9mm
Withstanding Voltage:	1.6KV
Safety Approval:	(cULus) pending

HI



Pitch 7.62mm
With hook and pillar
Poles 2p~16p
HIxx30500000G*
Number of poles

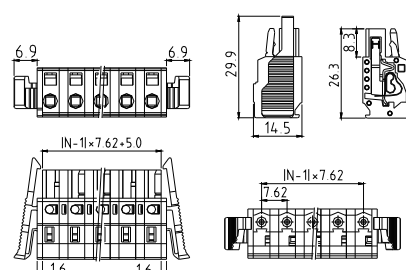


Electrical:	cULus
Voltage rating:	300V
Current rating:	15A
Wire range:	
Solid wire(AWG):	12-28
Stranded wire(AWG):	12-28
Wire strip length:	8-9mm
Withstanding Voltage:	1.6KV
Safety Approval:	cULus

HI



Pitch 7.62mm
With latch
Poles 2p~16p
HIxx30530000G*
Number of poles

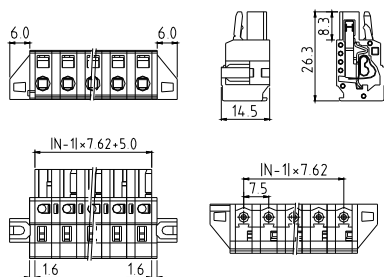


Electrical:	cULus
Voltage rating:	300V
Current rating:	15A
Wire range:	
Solid wire(AWG):	12-28
Stranded wire(AWG):	12-28
Wire strip length:	8-9mm
Withstanding Voltage:	1.6KV
Safety Approval:	cULus

HI



Pitch 7.62mm
With flange
Poles 2p~16p
HIxx30520000G*
Number of poles

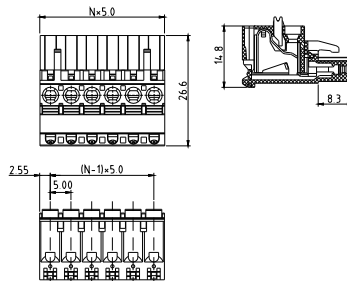


Electrical:	cULus
Voltage rating:	300V
Current rating:	15A
Wire range:	
Solid wire(AWG):	12-28
Stranded wire(AWG):	12-28
Wire strip length:	8-9mm
Withstanding Voltage:	1.6KV
Safety Approval:	cULus

H4

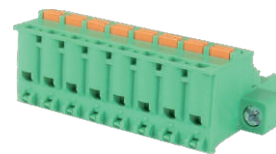


Pitch 5.0mm
Hook on entry side
Poles 2p~24p
H4xx705A0000G*
Number of poles

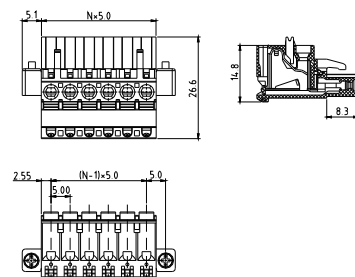


Electrical:	cULus
Voltage rating:	300V
Current rating:	10A
Wire range:	
Solid wire(AWG):	12-26
Stranded wire(AWG):	12-26
Wire strip length:	9-10mm
Withstanding Voltage:	1.6KV
Safety Approval:	cULus

H4



Pitch 5.0mm-W/F
Hook on entry side
Poles 2p~24p
H4xx705C0000G*
Number of poles



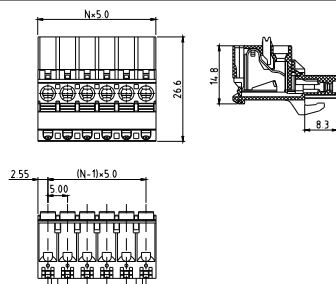
Electrical:	cULus
Voltage rating:	300V
Current rating:	10A
Wire range:	
Solid wire(AWG):	12-26
Stranded wire(AWG):	12-26
Wire strip length:	9-10mm
Withstanding Voltage:	1.6KV
Safety Approval:	cULus

G

H4



Pitch 5.0mm
Hook on back side
Poles 2p~24p
H4xx705B0000G*
Number of poles

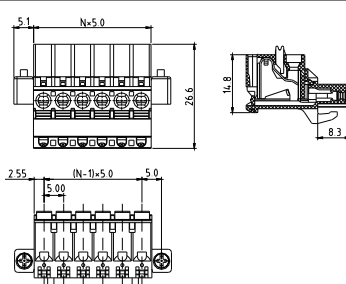


Electrical:	cULus
Voltage rating:	300V
Current rating:	10A
Wire range:	
Solid wire(AWG):	12-26
Stranded wire(AWG):	12-26
Wire strip length:	9-10mm
Withstanding Voltage:	1.6KV
Safety Approval:	cULus

H4



Pitch 5.0mm-W/F
Hook on back side
Poles 2p~24p
H4xx705D0000G*
Number of poles

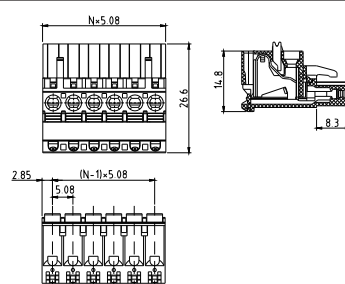


Electrical:	cULus
Voltage rating:	300V
Current rating:	10A
Wire range:	
Solid wire(AWG):	12-26
Stranded wire(AWG):	12-26
Wire strip length:	9-10mm
Withstanding Voltage:	1.6KV
Safety Approval:	cULus

H4

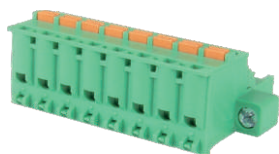


Hook on entry side
Poles 2p~24p
H4xx505A0000G*
Number of poles

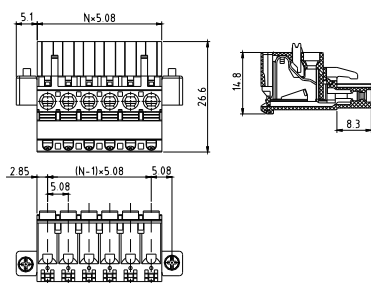


Electrical:	cULus
Voltage rating:	300V
Current rating:	10A
Wire range:	
Solid wire(AWG):	12-26
Stranded wire(AWG):	12-26
Wire strip length:	9-10mm
Withstanding Voltage:	1.6KV
Safety Approval:	cULus

H4



Pitch 5.08mm-W/F
Hook on entry side
Poles 2p~24p
H4xx505C0000G*
Number of poles

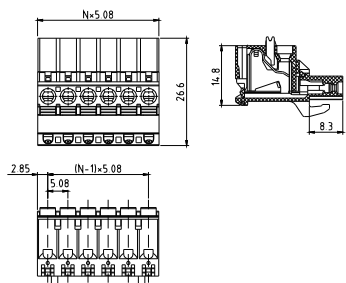


Electrical:	cULus
Voltage rating:	300V
Current rating:	10A
Wire range:	
Solid wire(AWG):	12-26
Stranded wire(AWG):	12-26
Wire strip length:	9-10mm
Withstanding Voltage:	1.6KV
Safety Approval:	cULus

H4



Pitch 5.08mm
Hook on back side
Poles 2p~24p
H4xx505B0000G*
Number of poles

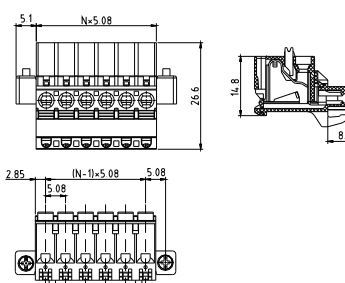


Electrical:	cULus
Voltage rating:	300V
Current rating:	10A
Wire range:	
Solid wire(AWG):	12-26
Stranded wire(AWG):	12-26
Wire strip length:	9-10mm
Withstanding Voltage:	1.6KV
Safety Approval:	cULus

H4



Pitch 5.08mm-W/F
Hook on back side
Poles 2p~24p
H4xx505D0000G*
Number of poles

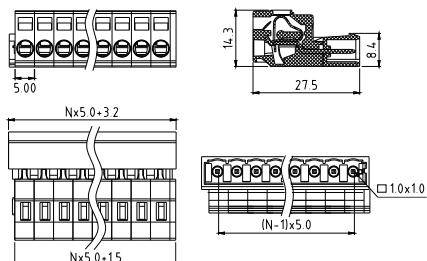


Electrical:	cULus
Voltage rating:	300V
Current rating:	10A
Wire range:	
Solid wire(AWG):	12-26
Stranded wire(AWG):	12-26
Wire strip length:	9-10mm
Withstanding Voltage:	1.6KV
Safety Approval:	cULus

NB



Pitch 5.0mm
W/O flange
Poles 2p~24p
NBxx7080000G*
Number of poles

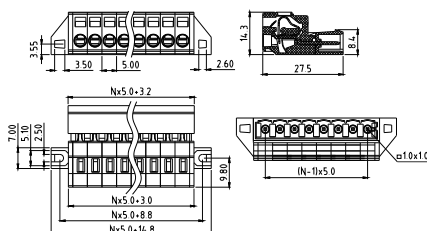


Electrical:	cULus
Voltage rating:	300V
Current rating:	8A
Wire range:	
Solid wire(AWG):	12-28
Stranded wire(AWG):	12-28
Wire strip length:	8-9mm
Withstanding Voltage:	1.6KV
Safety Approval:	

NB



Pitch 5.0mm
W/flange
Poles 2p~24p
NBxx70810000G*
Number of poles

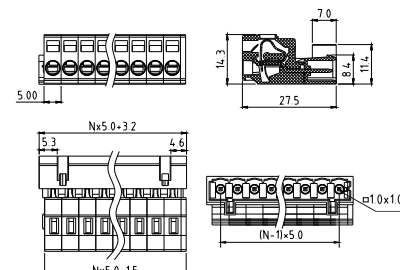


Electrical:	cULus
Voltage rating:	300V
Current rating:	8A
Wire range:	
Solid wire(AWG):	12-28
Stranded wire(AWG):	12-28
Wire strip length:	8-9mm
Withstanding Voltage:	1.6KV
Safety Approval:	

NB



Pitch 5.0 mm
W/O flange, 100% protected against mismatching
Poles 2p~24p
NBxx70820000G*
Number of poles

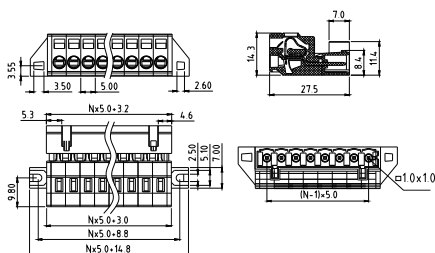


Electrical:	cULus
Voltage rating:	300V
Current rating:	8A
Wire range:	
Solid wire(AWG):	12-28
Stranded wire(AWG):	12-28
Wire strip length:	8-9mm
Withstanding Voltage:	1.6KV
Safety Approval:	

NB



Pitch 5.0 mm
W/flange, 100% protected against mismatching
Poles 2p~24p
NBxx70830000G*
Number of poles

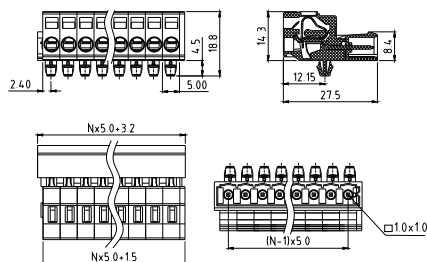


Electrical:	cULus
Voltage rating:	300V
Current rating:	8A
Wire range:	
Solid wire(AWG):	12-28
Stranded wire(AWG):	12-28
Wire strip length:	8-9mm
Withstanding Voltage:	1.6KV
Safety Approval:	

NB



Pitch 5.0mm
Snap-in mounting feet
Poles 2p~24p
NBxx70840000G*
Number of poles

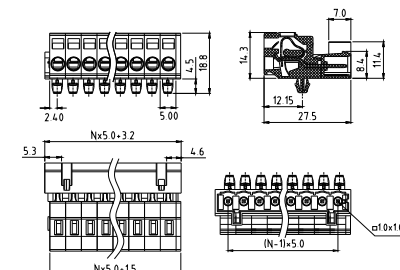


Electrical:	cULus
Voltage rating:	300V
Current rating:	8A
Wire range:	
Solid wire(AWG):	12-28
Stranded wire(AWG):	12-28
Wire strip length:	8-9mm
Withstanding Voltage:	1.6KV
Safety Approval:	

NB



Pitch 5.0mm
Snap-in mounting feet,
100% protected against mismatching
Poles 2p~24p
NBxx70850000G*
Number of poles



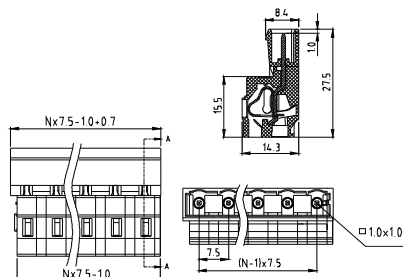
Electrical:	cULus
Voltage rating:	300V
Current rating:	8A
Wire range:	
Solid wire(AWG):	12-28
Stranded wire(AWG):	12-28
Wire strip length:	8-9mm
Withstanding Voltage:	1.6KV
Safety Approval:	

G

NB

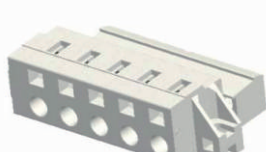


Pitch 7.5mm
W/O flange
Poles 2p~16p
NBxxA0800000G*
Number of poles

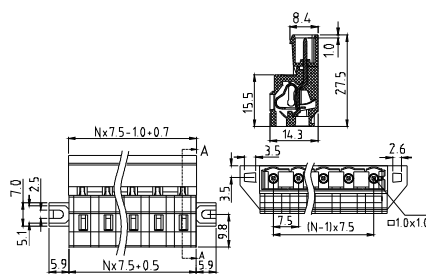


Electrical:	cULus
Voltage rating:	300V
Current rating:	8A
Wire range:	
Solid wire(AWG):	12-28
Stranded wire(AWG):	12-28
Wire strip length:	8-9mm
Withstanding Voltage:	1.6KV
Safety Approval:	(cULus) pending

NB

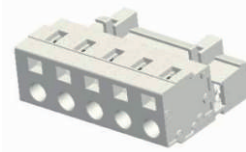


Pitch 7.5mm
W/flange
Poles 2p~16p
NBxxA0810000G*
Number of poles

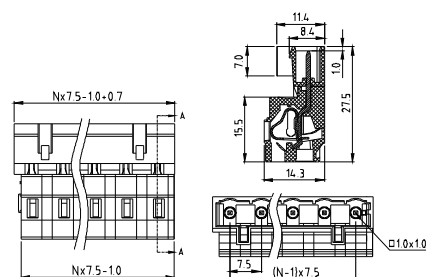


Electrical:	cULus
Voltage rating:	300V
Current rating:	8A
Wire range:	
Solid wire(AWG):	12-28
Stranded wire(AWG):	12-28
Wire strip length:	8-9mm
Withstanding Voltage:	1.6KV
Safety Approval:	(cULus) pending

NB

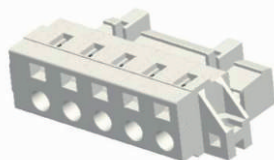


Pitch 7.5mm
W/O flange, 100% protected against mismatching
Poles 2p~16p
NBxxA0820000G*
Number of poles

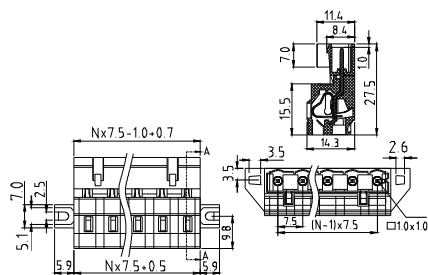


Electrical:	cULus
Voltage rating:	300V
Current rating:	8A
Wire range:	
Solid wire(AWG):	12-28
Stranded wire(AWG):	12-28
Wire strip length:	8-9mm
Withstanding Voltage:	1.6KV
Safety Approval:	(cULus) pending

NB



Pitch 7.5mm
W/flange, 100% protected against mismatching
Poles 2p~16p
NBxxA0830000G*
Number of poles

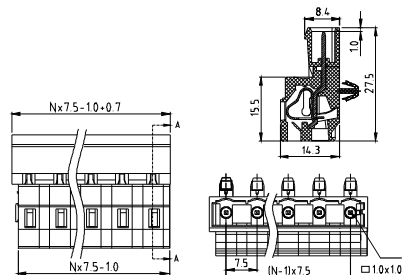


Electrical:	cULus
Voltage rating:	300V
Current rating:	8A
Wire range:	
Solid wire(AWG):	12-28
Stranded wire(AWG):	12-28
Wire strip length:	8-9mm
Withstanding Voltage:	1.6KV
Safety Approval:	(cULus) pending

NB

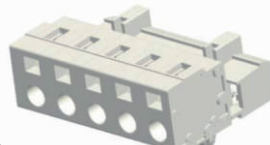


Pitch 7.5mm
Snap-in mounting feet
Poles 2p~16p
NBxxA0840000G*
Number of poles

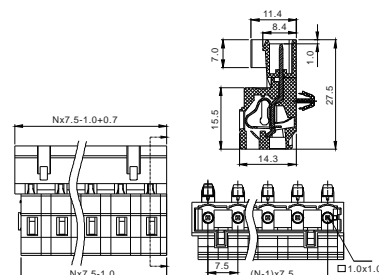


Electrical:	cULus
Voltage rating:	300V
Current rating:	8A
Wire range:	
Solid wire(AWG):	12-28
Stranded wire(AWG):	12-28
Wire strip length:	8-9mm
Withstanding Voltage:	1.6KV
Safety Approval:	(cULus) pending

NB

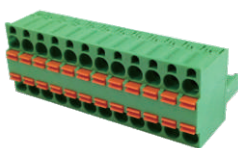


Pitch 7.5mm
Snap-in mounting feet,
100% protected against mismatching
Poles 2p~16p
NBxxA0850000G*
Number of poles

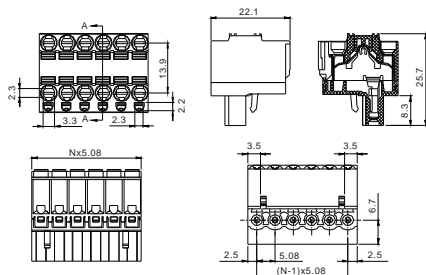


Electrical:	cULus
Voltage rating:	300V
Current rating:	8A
Wire range:	
Solid wire(AWG):	12-28
Stranded wire(AWG):	12-28
Wire strip length:	8-9mm
Withstanding Voltage:	1.6KV
Safety Approval:	(cULus) pending

NF

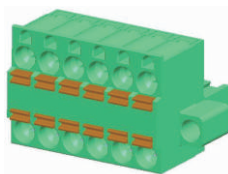


Pitch 5.08mm-W/O flange
Poles 2p~24p
NFxx50500000G*
Number of poles

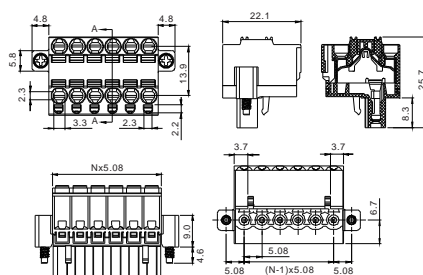


Electrical:	cULus
Voltage rating:	300V
Current rating:	8A
Wire range:	
Solid wire(AWG):	12-26
Stranded wire(AWG):	12-26
Wire strip length:	11-12mm
Withstanding Voltage:	1.6KV
Safety Approval:	cULus

NF

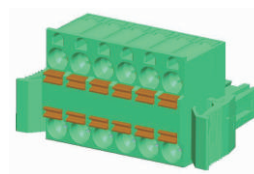


Pitch 5.08mm-With flange
Poles 2p~24p
NFxx50510000G*
Number of poles

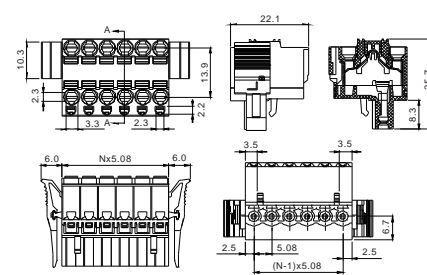


Electrical:	cULus
Voltage rating:	300V
Current rating:	8A
Wire range:	
Solid wire(AWG):	12-26
Stranded wire(AWG):	12-26
Wire strip length:	11-12mm
Withstanding Voltage:	1.6KV
Safety Approval:	cULus

NF



Pitch 5.08mm-With latch
Poles 2p~24p
NFxx50520000G*
Number of poles

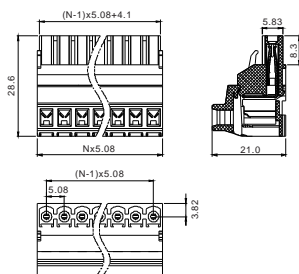


Electrical:	cULus
Voltage rating:	300V
Current rating:	8A
Wire range:	
Solid wire(AWG):	12-26
Stranded wire(AWG):	12-26
Wire strip length:	11-12mm
Withstanding Voltage:	1.6KV
Safety Approval:	cULus

NT



Pitch 5.08mm-W/O flange
Poles 2p~24p
NTxx50800000G*
Number of poles

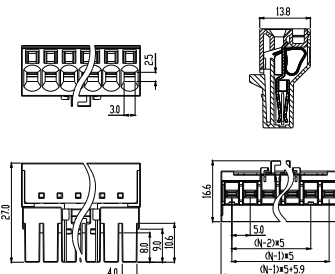


Electrical:	cULus
Voltage rating:	300V
Current rating:	5A
Wire range:	
Solid wire(AWG):	18-24
Stranded wire(AWG):	18-24
Wire strip length:	
Withstanding Voltage:	1.6KV
Safety Approval:	cULus

HO



Pitch 5.0mm
Poles 2p~12p
HOxx00x00000G*
Number of poles

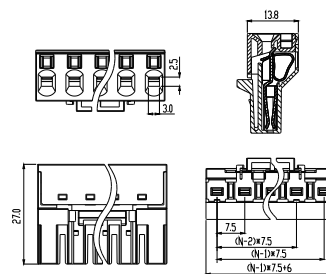


Electrical:	cULus
Voltage rating:	300V
Current rating:	15A
Wire range:	
Solid wire(AWG):	14-18
Stranded wire(AWG):	14-18
Wire strip length:	9-10mm
Withstanding Voltage:	1.6KV
Safety Approval:	(cULus) pending

HO

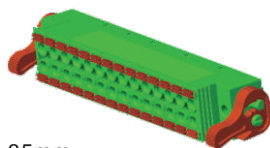


Pitch 7.5mm
Poles 2p~12p
HOxx20x00000G*
Number of poles

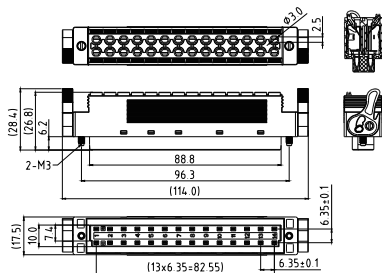


Electrical:	cULus
Voltage rating:	300V
Current rating:	15A
Wire range:	
Solid wire(AWG):	14-18
Stranded wire(AWG):	14-18
Wire strip length:	9-10mm
Withstanding Voltage:	1.6KV
Safety Approval:	(cULus) pending

E5 - Screwless type

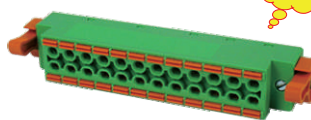


Pitch 6.35mm
Poles 2*14p / 2*16p
E5xx0B500000G*
Number of poles

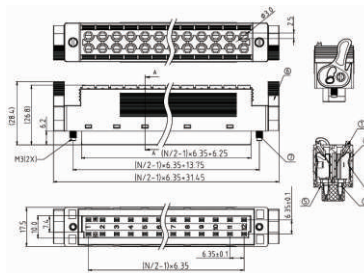


Electrical:	cULus
Voltage rating:	250V
Current rating:	6A
Wire range:	
Solid wire(AWG):	16-20
Stranded wire(AWG):	16-20
Wire strip length:	12mm
Withstanding Voltage:	2.2KV
Safety Approval:	(cULus) pending

E5 - Screwless type

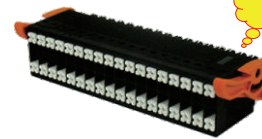


Pitch 6.35mm
Poles 2*8p~2*12p
E5xx0B500000ZG*
Number of poles

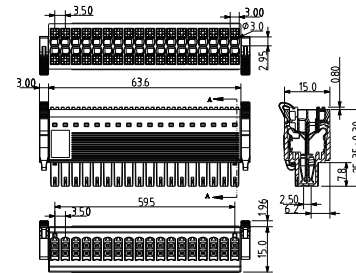


Electrical:	cULus
Voltage rating:	300V
Current rating:	6A
Wire range:	
Solid wire(AWG):	16-20
Stranded wire(AWG):	16-20
Wire strip length:	12mm
Withstanding Voltage:	2.5KV
Safety Approval:	(cULus) pending

N4



Pitch 3.5mm
With operating lever
Poles 2*18p
N43610030000G*
Number of poles



Electrical:	cULus
Voltage rating:	300V
Current rating:	10A
Wire range:	
Solid wire(AWG):	16-30
Stranded wire(AWG):	16-30
Wire strip length:	12-15mm
Withstanding Voltage:	1.6KV
Safety Approval:	cULus