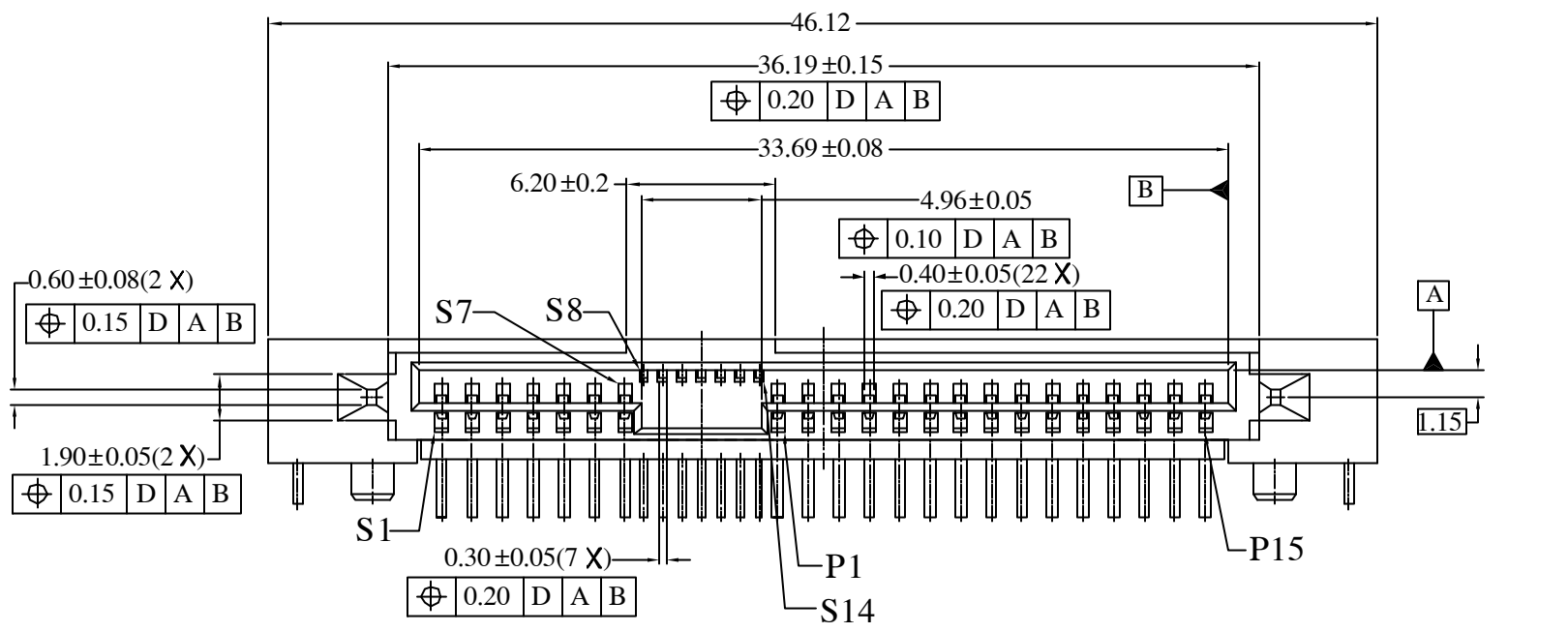
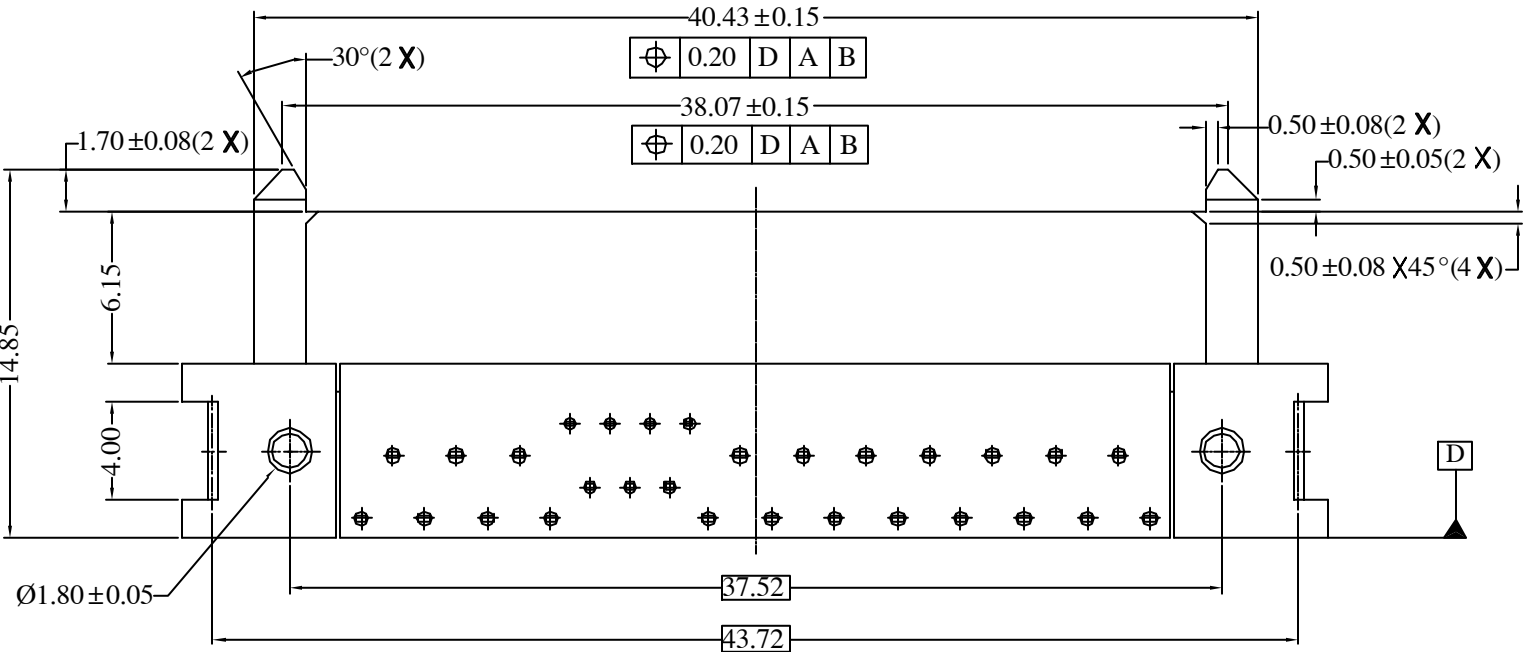


This document is the property of Amphenol Corporation and is delivered on the express condition that it is not to be disclosed, reproduced or used, in whole or in part, for manufacture or sale by anyone other than Amphenol Corporation without its prior consent, & that no right is granted to disclose or to use any information in this document.

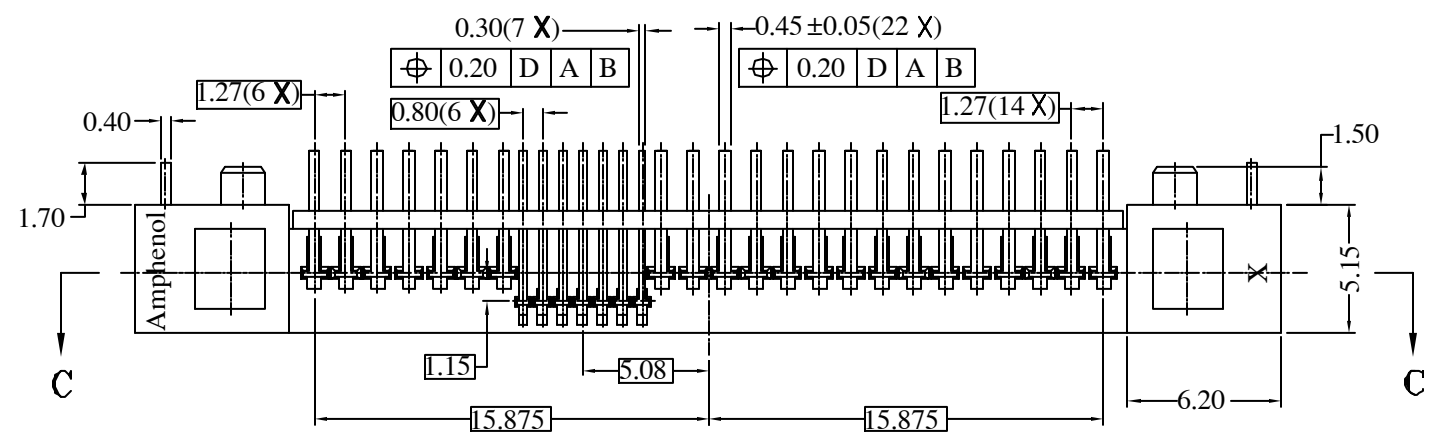
REVISIONS				
SYM	ECN	DESCRIPTION	DATE	APPROVED
A	HKXXXX	Initially release	6/29/04	IP



- NOTES:
- MATERIAL HOUSING: FR-6145 45% GLASS FILLED UL94V-0, BLACK.
OR EQUIVALENT HIGH TEMPERATURE PLASTIC.
CONTACT: PHOSPHOR BRONZE
PLATING: REFER TO P/N SYSTEM ON MATING AREA
1.27~2.54um NICKEL UNDERPLATE OVERALL
2.54~5.08um PURE TIN ON SOLDER TAIL
SOLDER TAB: COPPER ALLOY, 2.54~5.08um PURE TIN PLATED OVERALL
1.27~2.54um NICKEL UNDERPLATE
 - ELECTRICAL SPECIFICATION: CURRENT RATING: 1.5A
CONTACT RESISTANCE: 30mΩ MAX.
INSULATOR RESISTANCE: 1000MΩ MIN.
DIELECTRIC WITHSTANDING VOLTAGE: 500 V AC



- PREMATING AT P4 & P12
 - RECOMMENDED PCB THICKNESS 1.60±0.10mm.
 - ORDER P/N SYSTEM: SAS-F013-002-X
- MATING AREA PLATING
1- 0.76um MIN Au.
2- 0.38um MIN Au.
A- Gold FLASH



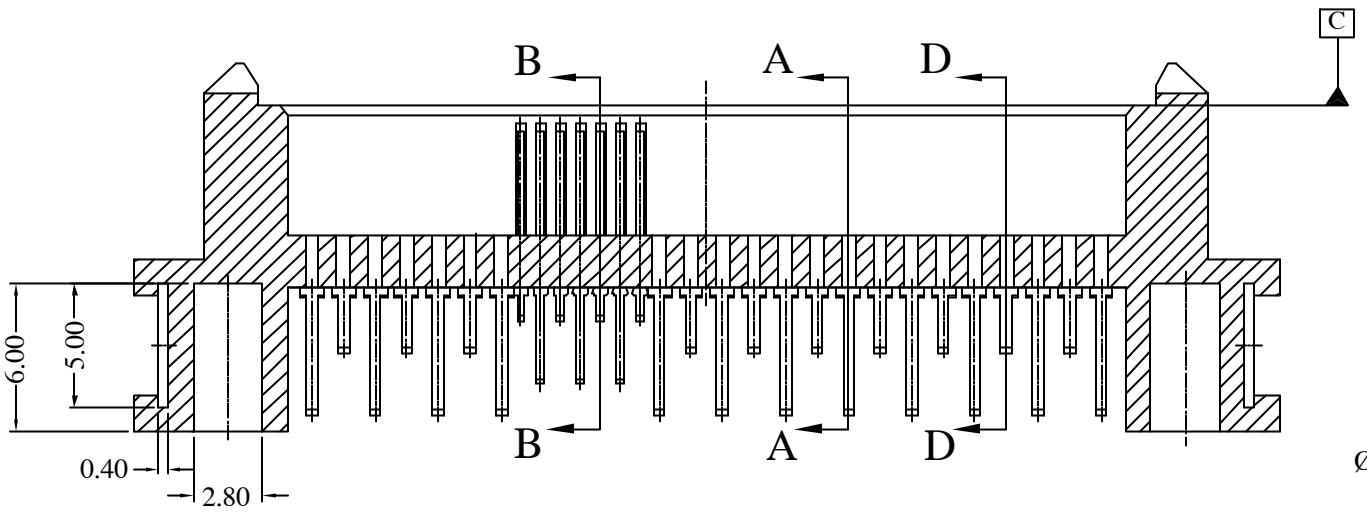
Customer Drawing

ITEM	PART NO.	REQ'D	DESCRIPTION
PARTS LIST			
UNLESS OTHERWISE SPECIFIED TOLERANCES		APPROVAL	DATE
U.S. METRIC		DRAWN RAN.XIAO	6/9/04
.X +/- ±0.20		CHECKED IP	6/9/04
.XX +/- ±0.10		CHECKED	
.XXX +/- ±0.10		DRAWING FILE :	
FRACTIONS +/-		PE MASTER DRAWING 948 C843-F013-002-X	
ANGLES +/-		ANGLE OF PROJECTION	
REMOVE SHARP EDGES			
DIMENSIONS			
U.S.	INCHES	SIZE	DRAWING NO.
(METRIC)	(MM)	A3	C SAS-F013-002-X
		SCALE	REV.
		NONE	A
			SHEET 1 OF 2

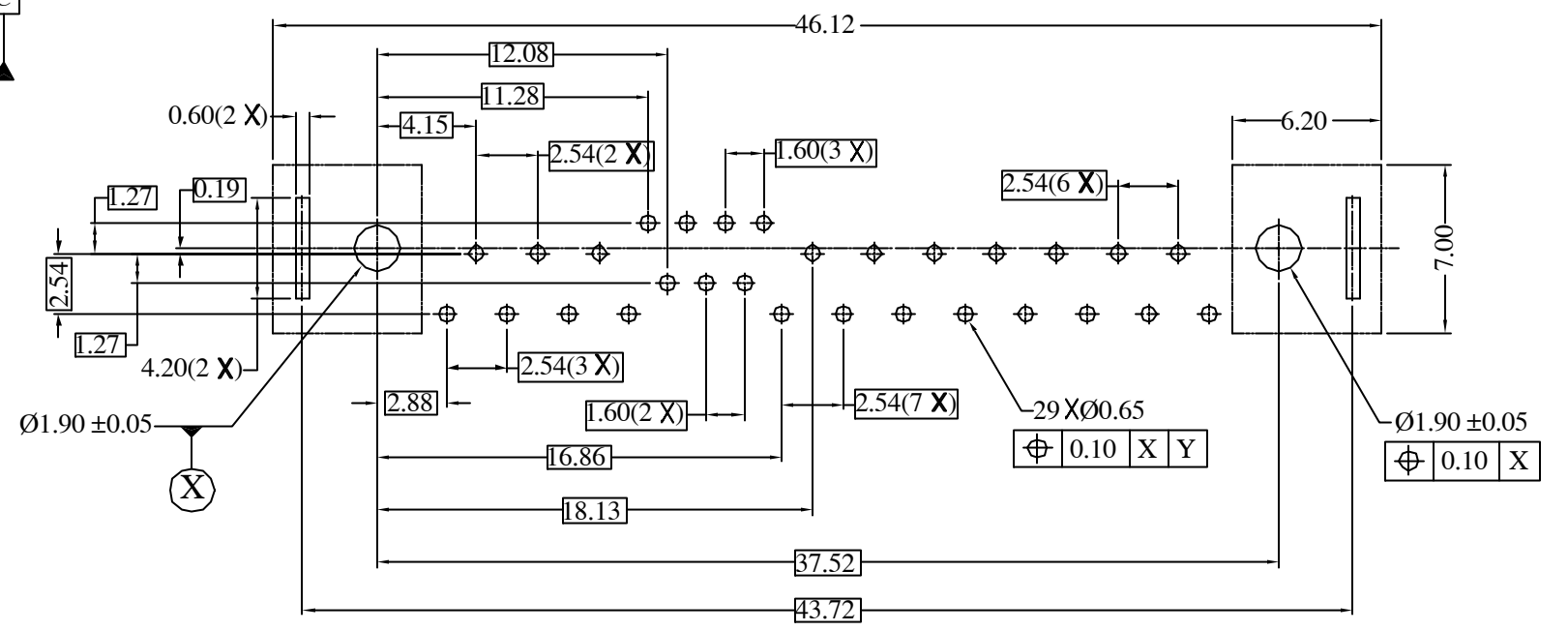
Amphenol
SAS R/A SOCKET

This document is the property of Amphenol Corporation and is delivered on the express condition that it is not to be disclosed, reproduced or used, in whole or in part, for manufacture or sale by anyone other than Amphenol Corporation without its prior consent, & that no right is granted to disclose or to use any information in this document.

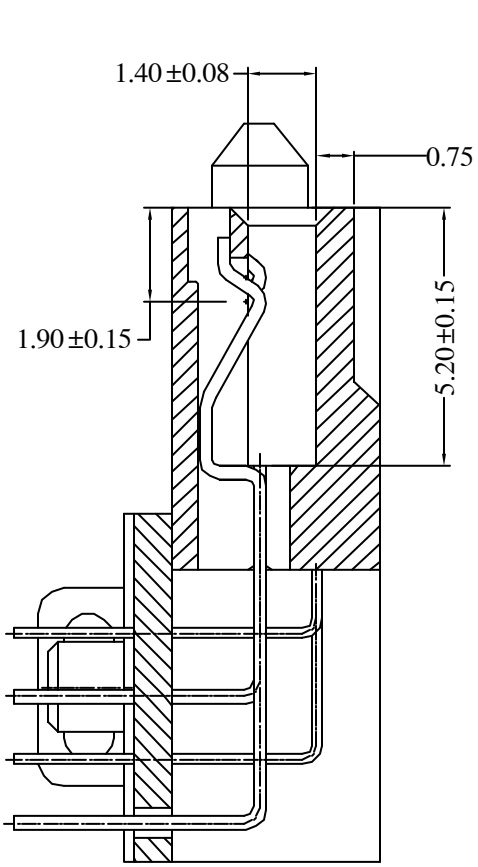
REVISIONS				
SYM	ECN	DESCRIPTION	DATE	APPROVED
A	HKXXXX	Initially release	6/29/04	IP



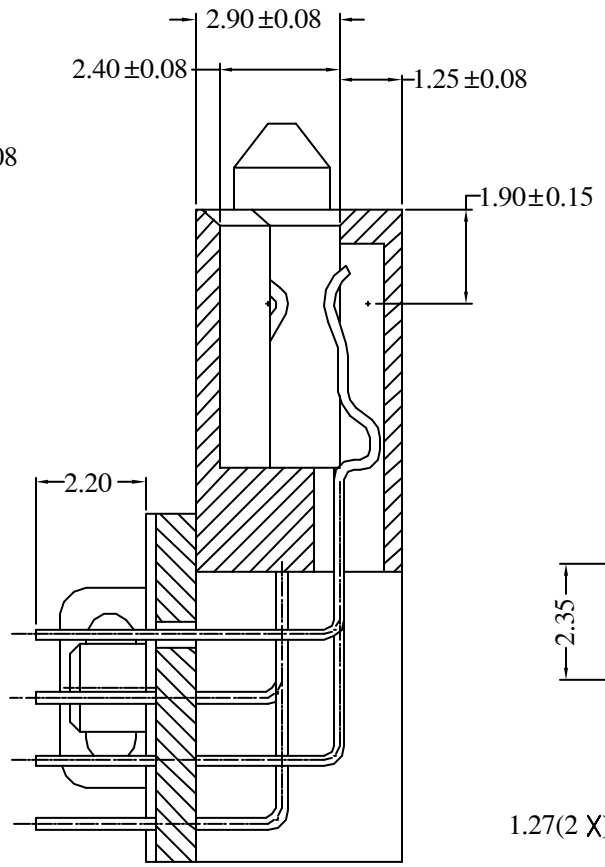
SECTION C-C



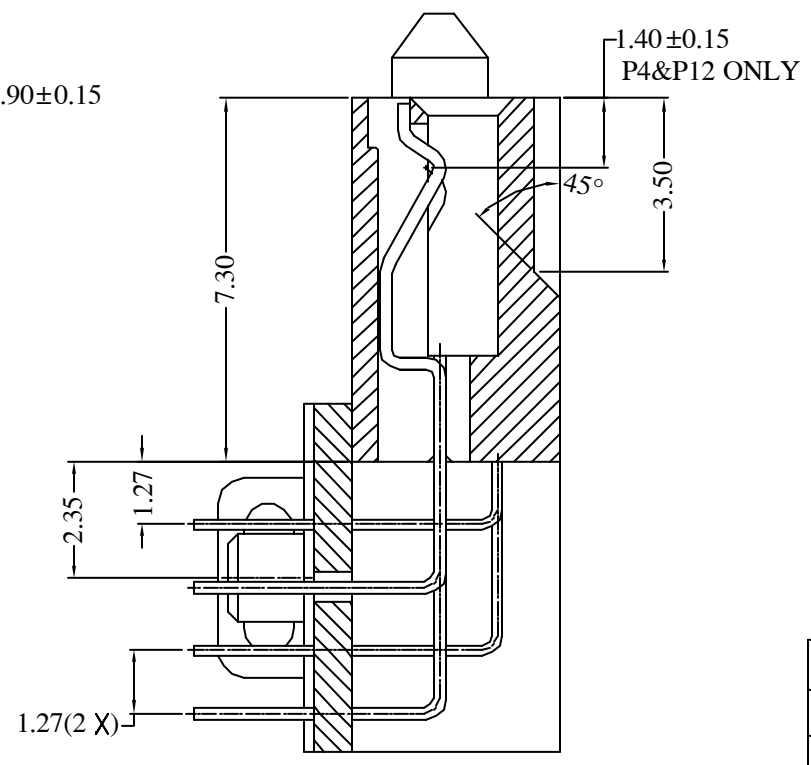
RECOMMENDED PCB LAYOUT
PCB THICKNESS = 1.60 mm



SECTION A-A



SECTION B-B



SECTION D-D

Customer Drawing

ITEM	PART NO.	REQ'D	DESCRIPTION
PARTS LIST			
UNLESS OTHERWISE SPECIFIED TOLERANCES		APPROVAL	DATE
.X	+/-	DRAWN RAN.XIAO	6/9/04
.XX	+/-	CHECKED IP	6/9/04
.XXX	+/-	CHECKED	
FRACTIONS	+/-	DRAWING FILE :	
ANGLES	+/-	PCB MANUFACTURING SAS CSAS-P013-002-X	
FOR MATERIALS AND FINISHES SEE NOTES		ANGLE OF PROJECTION	
REMOVE SHARP EDGES			
DIMENSIONS			
U.S.	INCHES	SIZE	DRAWING NO.
(METRIC)	(MM)	A3	C SAS-F013-002-X
		SCALE	NONE
		SHEET 2 OF 2	

Amphenol

SAS R/A SOCKET

REV. A